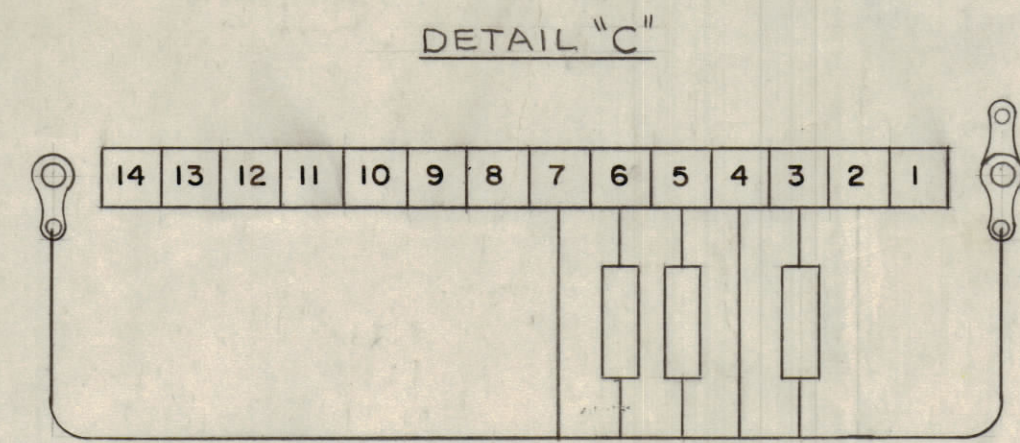
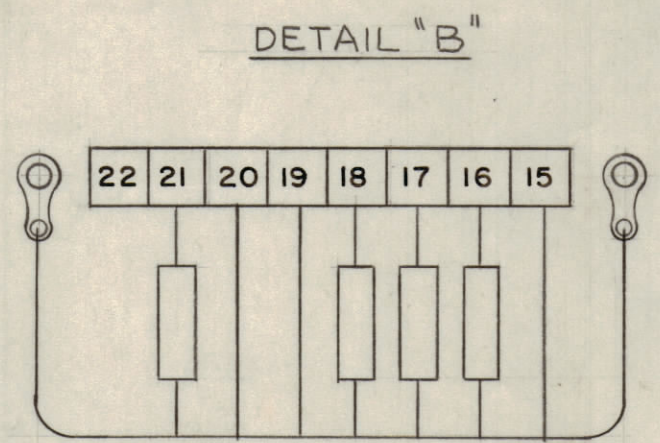
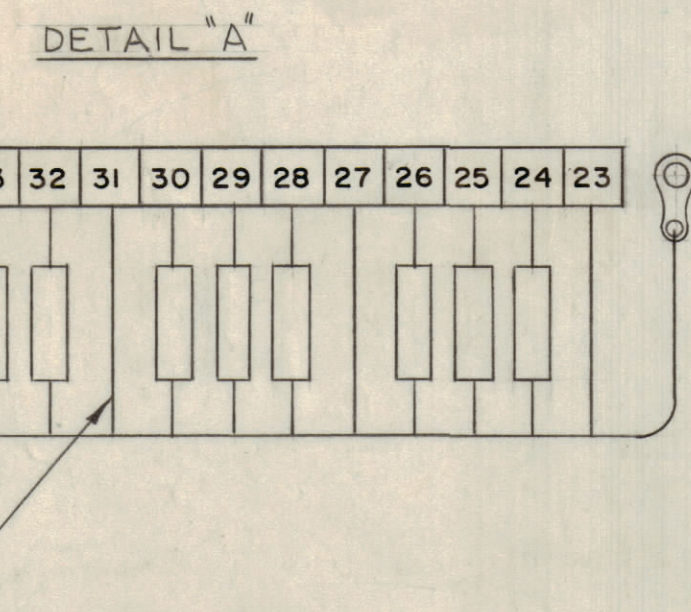
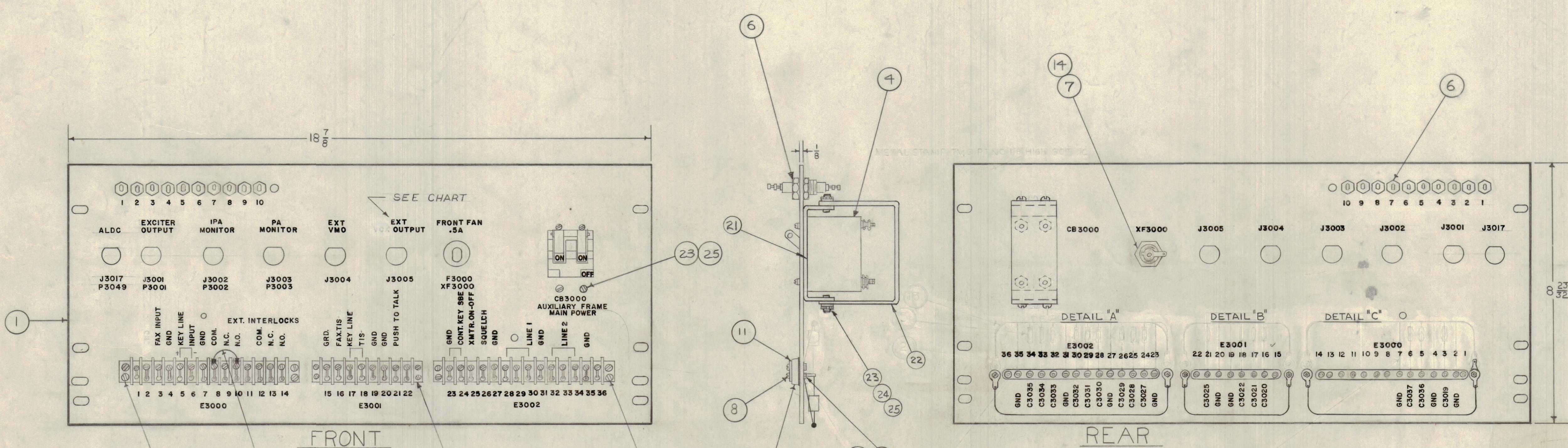


NOTICE TO PERSONS RECEIVING THIS DRAWING

THE TECHNICAL MATERIEL CORPORATION claims proprietary right in the material disclosed herein. This drawing is issued in confidence for engineering information only and may not be reproduced or used to manufacture anything shown hereon without permission from THE TECHNICAL MATERIEL CORPORATION to the user. This drawing is loaned for mutual assistance and is subject to recall at any time.

Property of:
THE TECHNICAL MATERIEL CORPORATION
MAMARONECK, NEW YORK



ASSY NO.	ITEM 1	J3005	MODEL USED ON	ASSY USED ON
A 2159	LD966 MS 1847	EXT VOX OUTPUT	GPT 10K W 7	AX508
A 2159-2	LD2226 MS 1847	EXT MON OUTPUT	GPT 10K SB 8	AX508-2

D	ITEM 1 CHG WAS LD966 MS 1847 TO "SEE CHART" ADDED PART NO CHART INCL ITEM 1 ADDED "SEE CHART" TO EXT OUTPUT LETTER	1/21/69	35				
C	IT 24 & 25 ADDED, IT 7, 8, 9, 10, 23 REVISED, PICT. CLARIFIED	9/1/65	14156				
B	IT 21, 22 & 23 ADDED	5/25/65	13749				
A	ON FRONT "EXCITER OUTP." WAS "SBE OUTPUT". ON FRONT ALDC ADD. WITH "ON" 2 GND DELE. (IT WAS MS1847 (LD966), ON FRONT F. FAN WAS 5A. IT WAS SCB50632 BNUO. IT 12 WAS 6 RE Q. E3000, 3001, 3002 SHOWN IN DETAILS A, B, C	7/24/64	11892				
SYM	ZONE	DESCRIPTION	DATE	CH. NO.	DRAFTS	CHECKER	ENG. APP.
UNLESS OTHERWISE SPECIFIED:			SCALE				
DIMENSIONS ARE IN INCHES			MAXIMUM ALLOWABLE TOLERANCES HAVE BEEN DETERMINED AND ANY DEVIATIONS WILL BE CAUSE FOR REJECTION. REMOVE ALL BURRS & SHARP EDGES				
TOLERANCES ON FRACTIONS ± 1/64			DECIMALS ± .005		ANGLES ± 1/2°		

8	25	LWE06MRN	WASH, LK, EXT	
4	24	FW06HBN	WASH, FLAT	
8	23	SCBP0632BN6	SCREW, MACHINE	
1	22	MS 4-425	SHIELD, ELECTRIC PROTECT	
1	21	MS 4-424	BRACKET, SHIELD MTG.	
2	20	PX-337-14	INSULATOR, TERM. STRIP (14 TERM)	
1	19	PX-337-8	INSULATOR, TERM. STRIP (8 TERM)	
X	18	WL-103-2	SHIELD, FLEXIBLE, 1/8"	
1	17	CA-409-32-2.00	CABLE ASSY, JUMPER	
X	16	BS-100	SOLDER, SOFT	
1	14	FH-104-3	HOLDER, FUSE	
X	13	WL-100-4	WIRE, BUSS	
7	12	TE-104-1	TERMINAL, LOCKING	
6	11	MS-154-1	STRADDLE PLATE	
12	10	NTH-0440BN8	NUT, HEX	
6	9	LWE04MRN	LOCKWASHER	
12	8	SCBP0440BN10	SCREW, MACHINE	
1	7	FU-102-5	FUSE	F3000
10	6	TE-114-2	TERMINAL, FEED THRU	
16	5	CM20B102K	CAPACITOR, FIXED MICA	CB3000
1	4	SW-251	BREAKER, CIRCUIT	
2	3	TM-100-14	TERM. STRIP, BARRIER TYPE	E3000 E3002
1	2	TM-100-8	TERM. STRIP, BARRIER TYPE	E3001
1	1	SEE CHART	PANEL, CENTER SHIELD	

REQ. PER UNIT	MODEL	SECTION	ASSY. NO.	DATE
1	GPT-10KW7	AX-508		9-13-61
USED ON				
FINISH & SPEC. NO.				
ELEC. DES. APP.				
MECH. DES. APP.				
SHEET OF				

A-2159 D