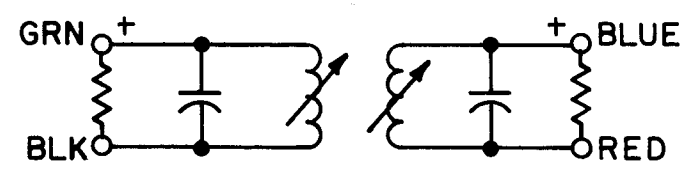


E	COIL DATA		
	SPECIFICATIONS	PRIMARY	SECONDARY
A-2153	CAM	.250	.250
	CAM GEAR	105	105
	CAM DRIVER	69	69
	IND. ( $\pm 5\%$ )	600uh	1 MH
	Q	40 OR GREATER	40 OR GREATER
	COIL RES. $\Omega$	19	24
	FREQ. (KC)	790	790
	COND. (PF)	SEE CHART	SEE CHART
	EXT. RES.	33K	68K

WINDING INSTRUCTIONS		
TURNS	300	375
WIRE	#38DSC	#38DSC

- WINDING DATA**
1. Wind primary first, 300 turns (item 6) starting 1/2 from end. Stake ends with item 10.
  2. Wind secondary 5/32 from end of primary, 375 turns (item 6) Stake ends with item 10.
  3. Color code coil base as shown.
  4. Strip & tin leads. Solder them to proper color-coded terminals on base.
  5. Measure, Q, IND, RES w/o core.
  6. Bake for 15 min. at 220°F. Saturate coils with item 11.
  7. Solder component leads to terminals.
  8. Apply all leads with GL-102 (item 11).
  9. Assemble as per assembly drawing, place in can.

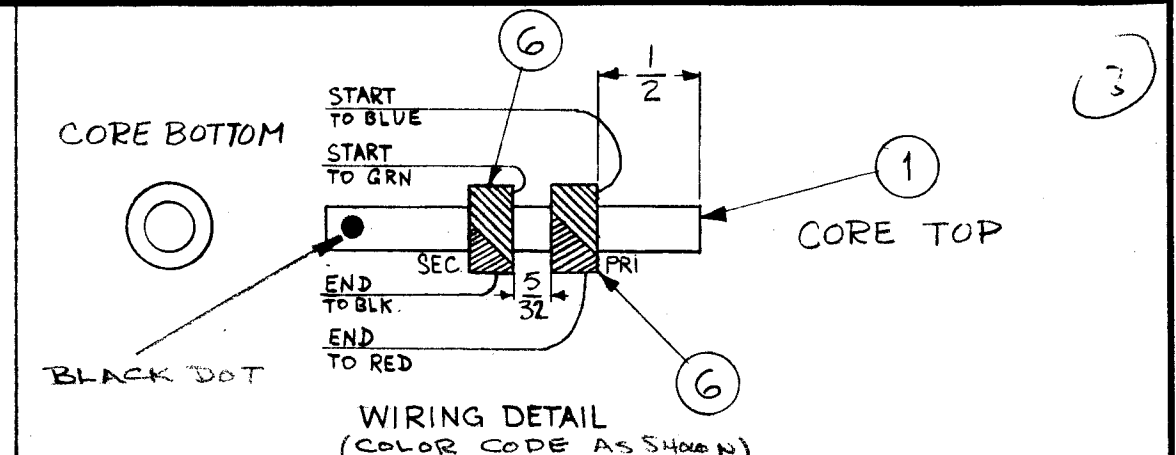
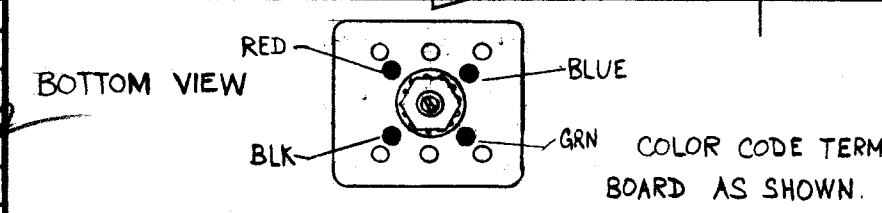
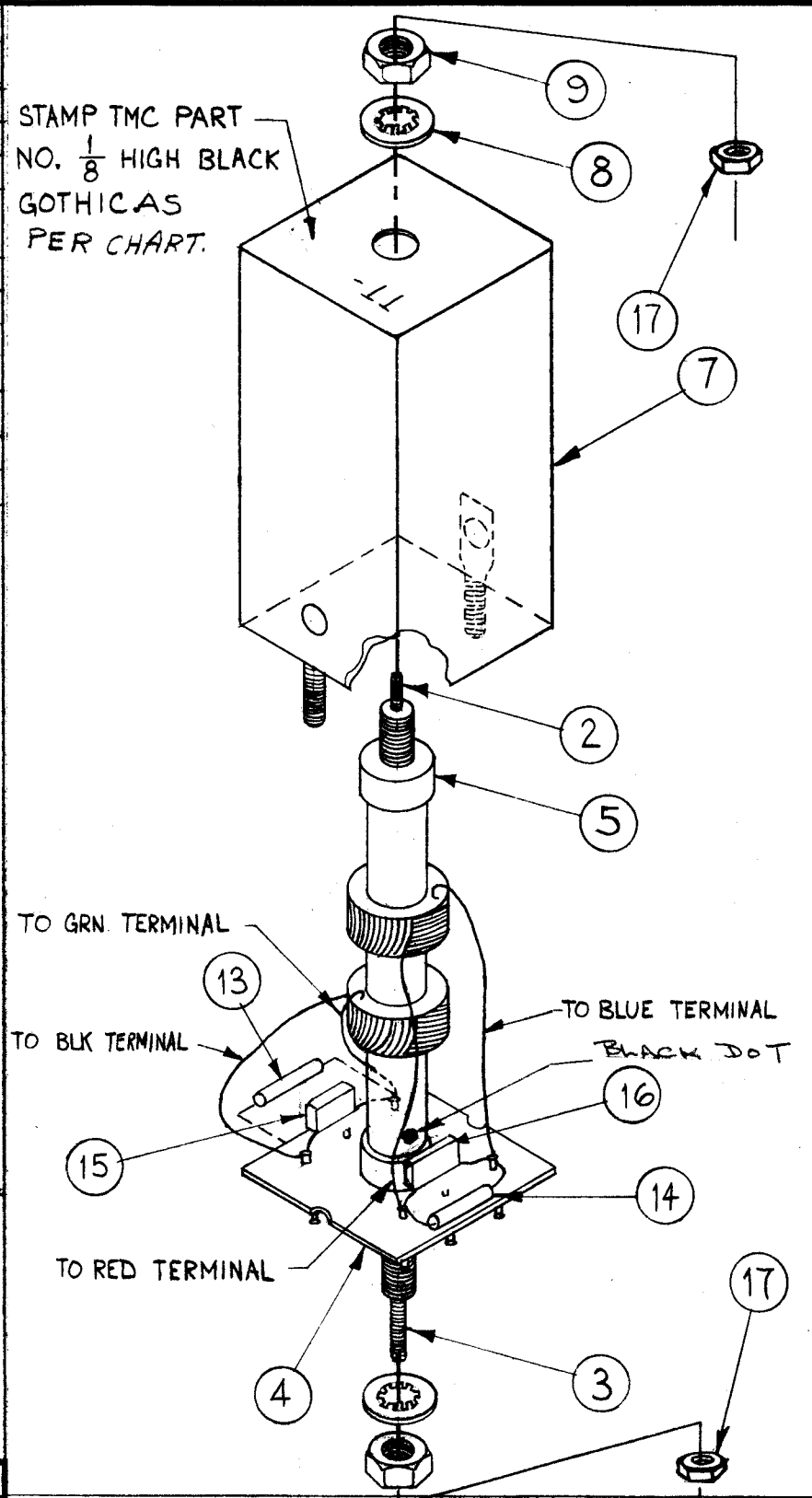


**SCHEMATIC DIAGRAM**  
+ INDICATES START OF WINDING

SYM	DESCRIPTION	DATE	CH. NO.	DRAFTS	CHECKER	ENG. APP.
E	ADD -1 TO IT 4 P/N	11-21-66	17292	RME		
D	COIL DATA "Q" WAS 35-45	10-19-66	17058	WFO		
C	IT 15 WAS CM111F321H55, IT 16 WAS CM111F471H55. TMC CHG. ADDED	11/4/65	15089	H.V.		
B	ITEM 17 ADDED	11-12-63	10412	SW		
A	DIM. 1/2 WAS 17/32; COLORS RELOCATED ITEM (7) WAS A-3029; DIM 5/32 WAS 3/16	1-25-63	8081			

UNLESS OTHERWISE SPECIFIED:  
DIMENSIONS ARE IN INCHES  
TOLERANCES ON FRACTIONS  $\pm 1/64$  DECIMALS  $\pm .005$  ANGLES  $\pm 1/2^\circ$

SCALE:  
MAXIMUM ALLOWABLE TOLERANCES HAVE BEEN DETERMINED AND ANY DEVIATIONS WILL BE CAUSE FOR REJECTION.  
REMOVE ALL BURRS AND SHARP EDGES



TMC ASS'Y NO.	TMC P/N	PER FREQ.	ITEM #15	ITEM #16
A2153	TT157	250KC	CM111F321G5S	CM111F471F5S
A2153-2	TT157-2	205KC	CM111F471F5S	CM111F681J5S

2	17	NTH0348BN6	NUT, HEX
1	16	SEE CHART	RESISTOR, FIXED COMP.
1	15	SEE CHART	RESISTOR, FIXED COMP.
1	14	RC20GF333J	RESISTOR, FIXED COMP.
1	13	RC20GF683J	RESISTOR, FIXED COMP.
X	12	BS-100	SOLDER, SOFT
X	11	GL-102	Q-DOPE
X	10	GL-103	DUCO
2	9	NTH0832BN8	HEX, NUT
2	8	LWI08MRN	LOCKWASHER, INTERNAL
1	7	A-3029-1	CAN ASS'Y
X	6	WI-107-19	MAGNET WIRE #38
2	5	SM-140-2	BUSHING, COIL MTG.
1	4	PX-610-1	TERM. BOARD TRANSFORMER, 6 LUGS
1	3	CI-116-17	CORE TUNING
1	2	CI-116-6	CORE, TUNING
1	1	CF-122-1.93	COIL FORM, .250 O.D.

REQ. ITEM	PART NO.	M. GELLMAN	DESCRIPTION	SYMBOL
<b>THE TECHNICAL MATERIEL CORP.</b> MAMARONECK, NEW YORK				
STOCK SIZE				
MATERIAL				
TT-157 TRANSFORMER ASS'Y. (TRANSF. IF TUNED).				
TYPE & TEMPER		HEAT TREAT. SPEC.	DRAWN	CHECKER
FINISH & SPEC. NO.		ENG. DES. APP.	MECH. DES. APP.	