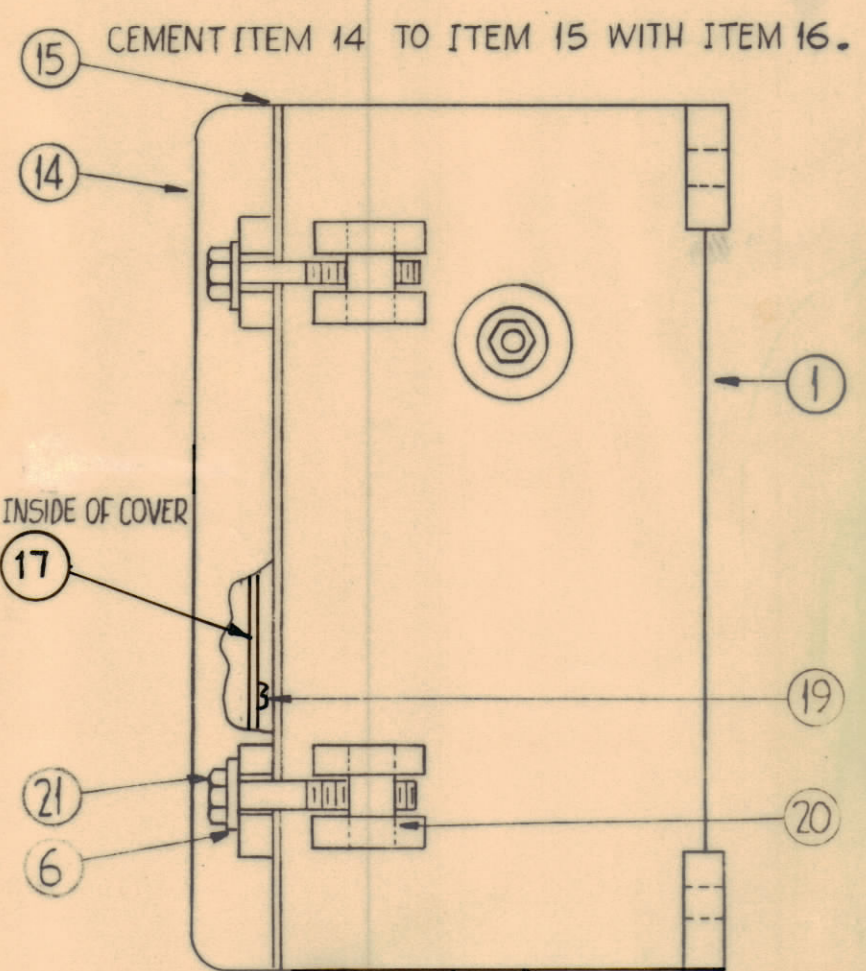
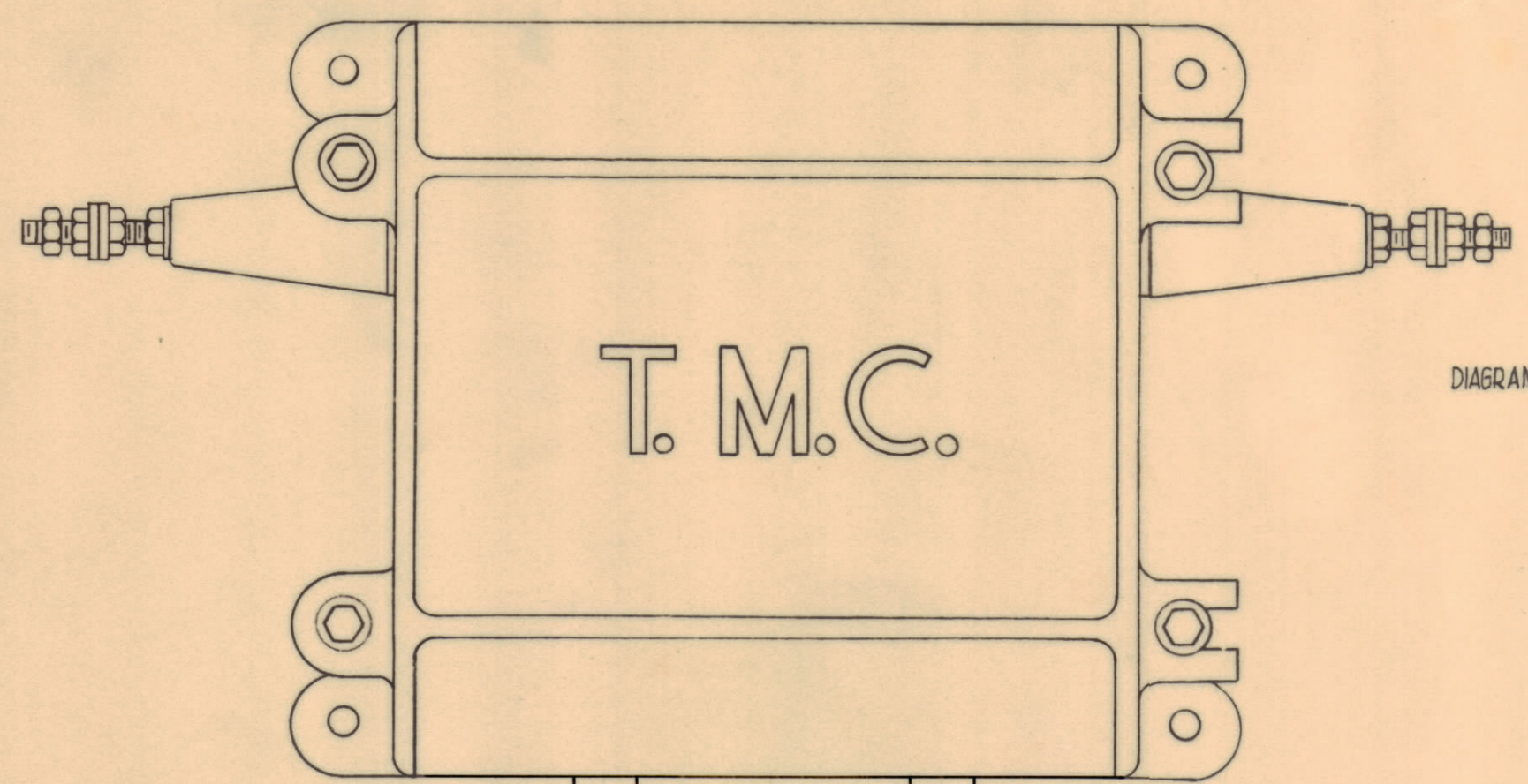


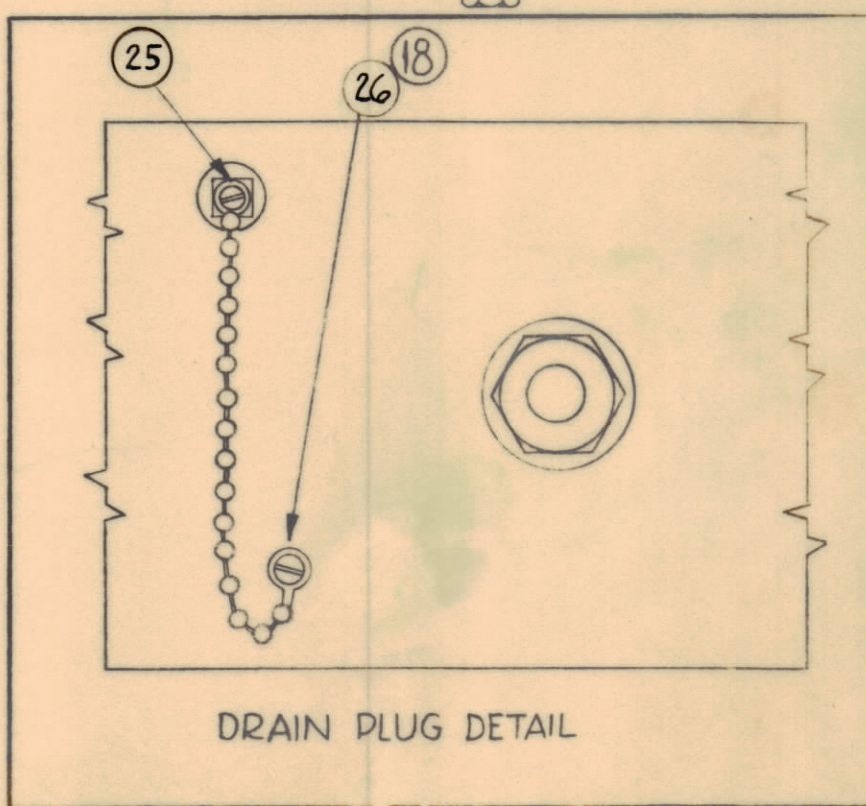
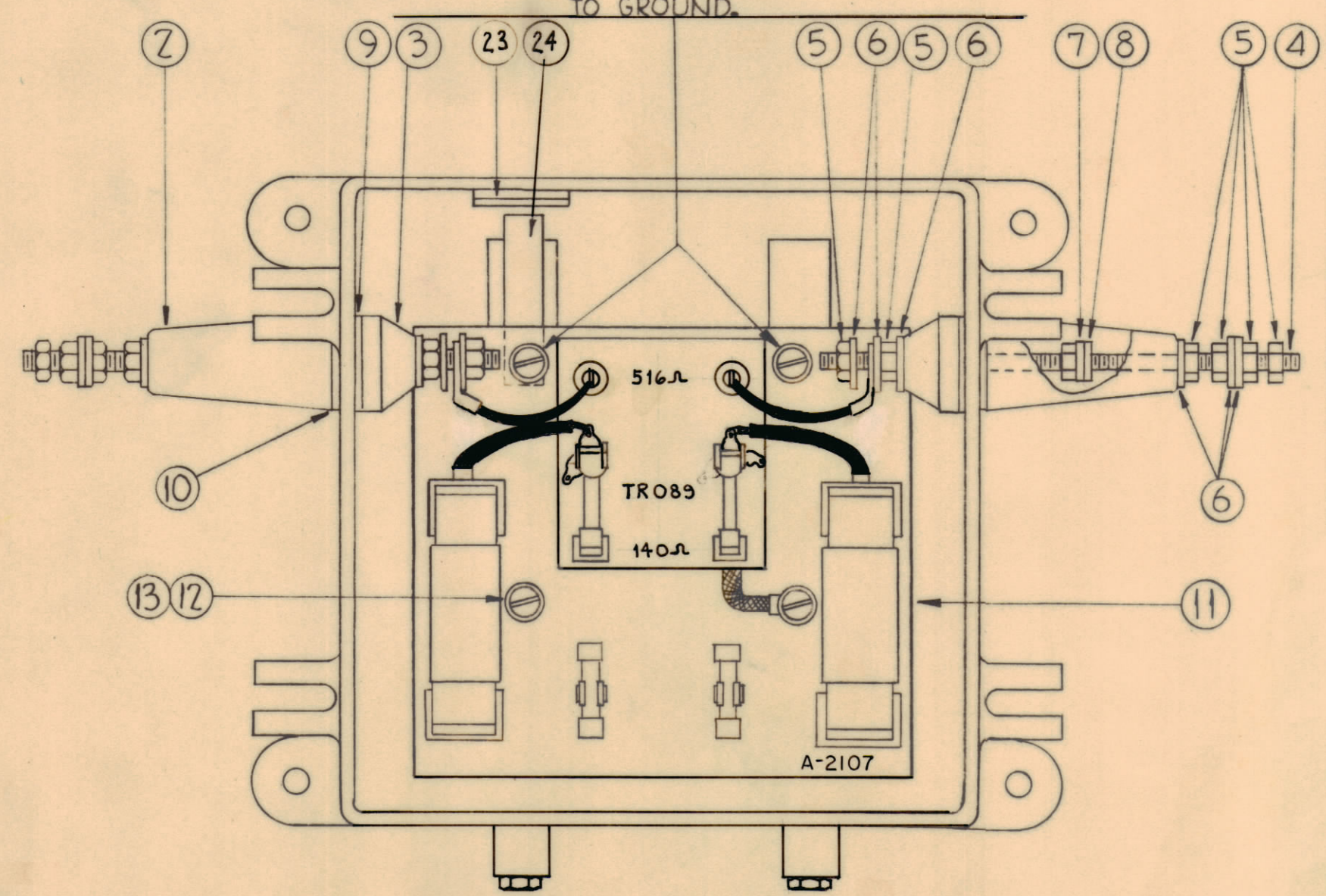
NOTICE TO PERSONS RECEIVING THIS DRAWING

THE TECHNICAL MATERIEL CORPORATION claims proprietary right in the material disclosed hereon. This drawing is issued in confidence for engineering information only and may not be reproduced or used to manufacture anything shown hereon without permission from THE TECHNICAL MATERIEL CORPORATION to the user. This drawing is loaned for mutual assistance and is subject to recall at any time.

Property of:  
THE TECHNICAL MATERIEL CORPORATION  
MAMARONECK, NEW YORK



NOTE ~ SCRAPE AREA OF CASE BENEATH PLATE MOUNTING HOLES FREE OF PAINT TO ASSURE CONTINUITY TO GROUND.



REQ.	ITEM	PART NO.	DESCRIPTION	SYMBOL
1	26	SCBS0632SS3	SCREW, MACHINE	
1	25	A-1291	DRAIN PLUG ASS'Y.	
1	24	MS-933	HOLDER, DESSICANT	
2	23	AD-101-1/6	DESSICANT	
2	22	PO-182	TERMINAL, TUBE	
4	21	SC-108-9	BOLT, HEXAGON	
4	20	PM-100	PIN, COVER BOLT	
4	19	SC-102-1	SCREW, THREAD CUTTING	
1	18	LWE06MSS	WASHER, LOCK EXTERNAL	
1	17	LD-959	SCHEMATIC DIAGRAM	
X	16	GL-101-1	CEMENT, PLIOBOND	
1	15	GA-103	GASKET, COVER	
1	14	PM-105	COVER, MACHINING	
4	13	SCBS0832BN6	SCREW, MACHINE	
4	12	LWE08MRN	LOCKWASHER, EXTERNAL	
1	11	A-2107	TRANSFORMER SUB-ASSEMBLY	
2	10	GA-100	GASKET, NEOPRENE	
2	9	GA-101	GASKET, CORK	
2	8	GA-104	GASKET, RING, NEOPRENE	
2	7	FW25LBN	WASHER, FLAT	
16	6	FW25MSS	WASHER, FLAT	
12	5	NTH2520SS14	NUT, HEXAGON	
2	4	A-100	STUB, SUB-ASSEMBLY	
2	3	NS-101	INSULATOR, INSIDE	
2	2	NS-100	INSULATOR, OUTSIDE	
1	1	PM-706	CASE, MACHINING	

SYM	ZONE	DESCRIPTION	DATE	CH. NO.	DRAFTS	CHECKER	ENG. APP.
A	FZ,E2	ITEM 26 WAS SCBS0632BC3, 18 WAS LWE06MRC	8-20-62	7076	E.S.	J.H.E.	16

UNLESS OTHERWISE SPECIFIED:  
DIMENSIONS ARE IN INCHES  
TOLERANCES ON  
FRACTIONS ± 1/64    DECIMALS ± .005    ANGLES ± 1/2°

SCALE: Do Not Scale

MAXIMUM ALLOWABLE TOLERANCES HAVE BEEN DETERMINED AND ANY DEVIATIONS WILL BE CAUSE FOR REJECTION. REMOVE ALL BURRS & SHARP EDGES

REQ. PER UNIT	MODEL	SECTION	ASS'Y. NO.	DATE
1	RAC-35			7-12-61

STOCK SIZE		THE TECHNICAL MATERIEL CORP. MAMARONECK, NEW YORK	
MATERIAL		CASE & COVER ASSEMBLY	
TYPE & TEMPER		RAC-35	
HEAT TREAT. SPEC.		W.A.F.	J.H.E.
FINISH & SPEC. NO.		DRAWN	CHECKED
ELEC. DES. APP.		FINAL APPROVAL	
MECH. DES. APP.		A-2106	
SHEET OF		A	