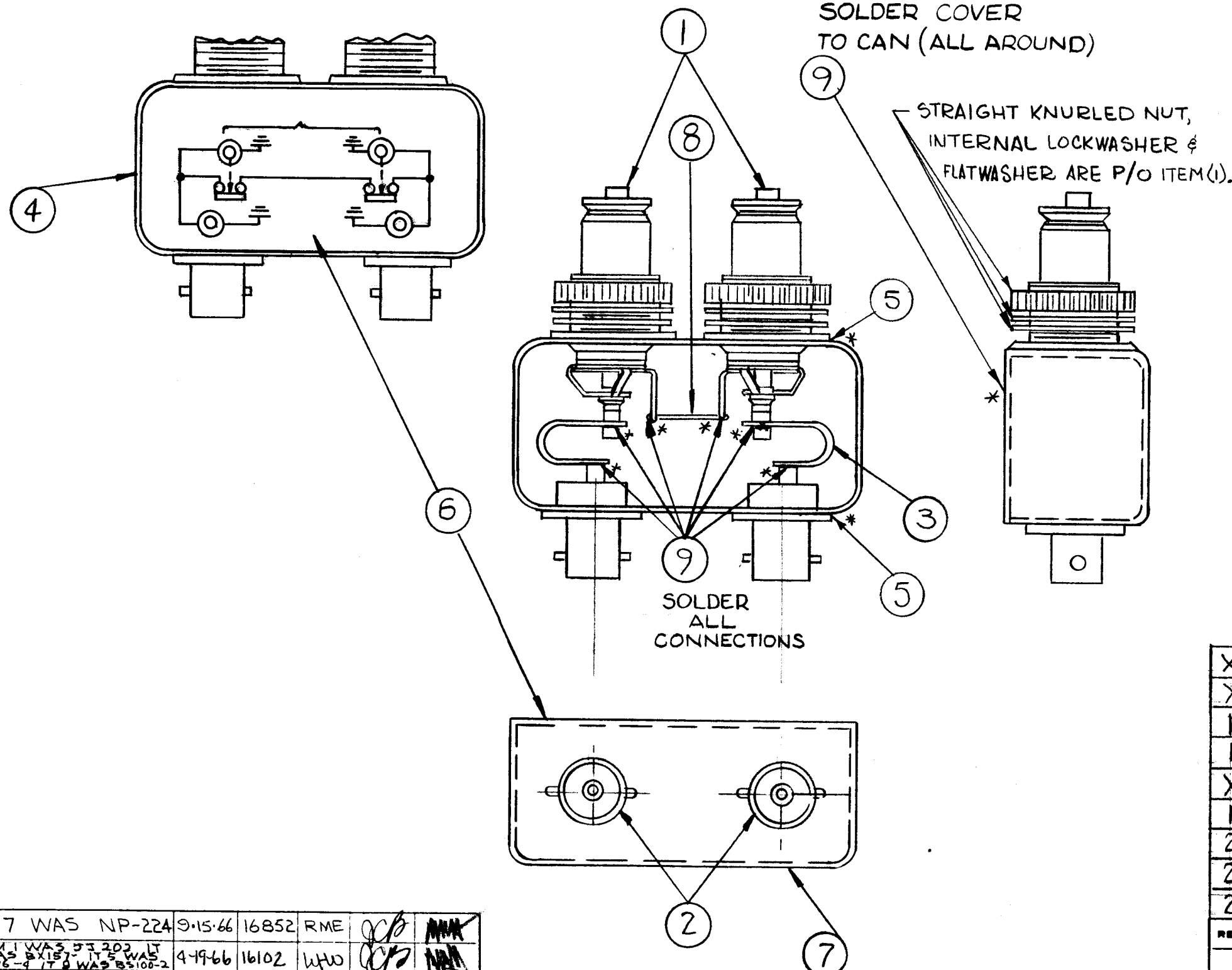


A2085 C

NOTES:

1. INDUCTION HEATING EQUIPMENT SET AT:
AMPERES -
SECONDS -
2. USE ITEM (5) FOR MOUNTING ITEM (1) AND ITEM (2).
3. USE ITEM (9) FOR MOUNTING ITEM (3) AND ITEM (8) AND FOR SEALING COVER ITEM (4).
4. STRAP ITEM (3) MUST BE KEPT AS FLEXIBLE AS POSSIBLE; DO NOT ALLOW SOLDER TO RUN OVER STRAP. LAY STRAP IN SO THAT IT CANNOT TOUCH CAN OR CONNECTOR BODIES.
5. FINISH AS FOLLOWS:
S-114 - ZINC CHROMATE PRIMER
S-115 - T M C SMOOTH GRAY ENAMEL
(DO NOT PAINT CONNECTOR BODIES)
6. AFFIX ITEM (6) TO FRONT AS SHOWN.
7. AFFIX ITEM (7) TO REAR AS SHOWN.
8. *DENOTES SOLDER ALL AROUND.



X	9	BS-100	SOLDER, TIN ALLOY	
X	8	WL-100-5	WIRE BUSS, # 18 AWG	
1	7	NP-488	NAME PLATE, TMC	
1	6	NP-225-4	SCHEMATIC DIAGRAM	
X	5	BS-100-2	SOLDER, TIN ALLOY	
1	4	BX-157-1	CASE & COVER	
2	3	MS-1769	STRAP, CONNECTING	
2	2	JJ-255	CONNECTOR, RECEPTACLE TYPE "C"	
2	1	JJ-162	CONNECTOR, RECEPTACLE SW. TYPE	
REQ. ITEM		PART NO.	DESCRIPTION	SYMBOL

THE TECHNICAL MATERIEL CORP.
MAMARONECK, NEW YORK

SW-284 ASS'Y

R. UZZO		J. H. [Signature]		[Signature]	
TYPE & TEMPER	HEAT TREAT. SPEC.	DRAWN	CHECKED	FINAL APPROVAL	
FINISH & SPEC. NO.		ELEC. DES. APP.	MECH. DES. APP.	A-2085 C	

C	1	IT. 7 WAS NP-224	9-15-66	16852	RME	[Signature]	[Signature]
B		ITEM 1 WAS BS-106-1 3 WAS BX-157-1 5 WAS BS-106-2	4-19-66	16102	WHO	[Signature]	[Signature]
A	4	PICTORIAL CLARIFIED	3-	83	[Signature]	[Signature]	[Signature]
	3	NOTES CLARIFIED	4-	60	[Signature]	[Signature]	[Signature]
	2	ITEM (9) ADDED					
	1	ITEM (5) WAS BS-106-1					
ISSUE	ITEM	CHANGED FROM	DATE	CH. NO.	DRAFTS	CHECKER	ENG. APP.
TOLERANCES			SCALE:				
DEC. DIM. ±			MAXIMUM ALLOWABLE TOLERANCES HAVE BEEN DETERMINED AND ANY DEVIATIONS WILL BE CAUSE FOR REJECTION.				
FRAC. DIM. ±			REMOVE ALL BURRS AND SHARP EDGES				
ANGULAR DIM. ±							

1	SW-284			4-14-61
REQ. PER UNIT	MODEL	PROJECT NO.	ASS'Y. NO.	DATE
USED ON				