

A

A-2047

SETTING SPARK GAP

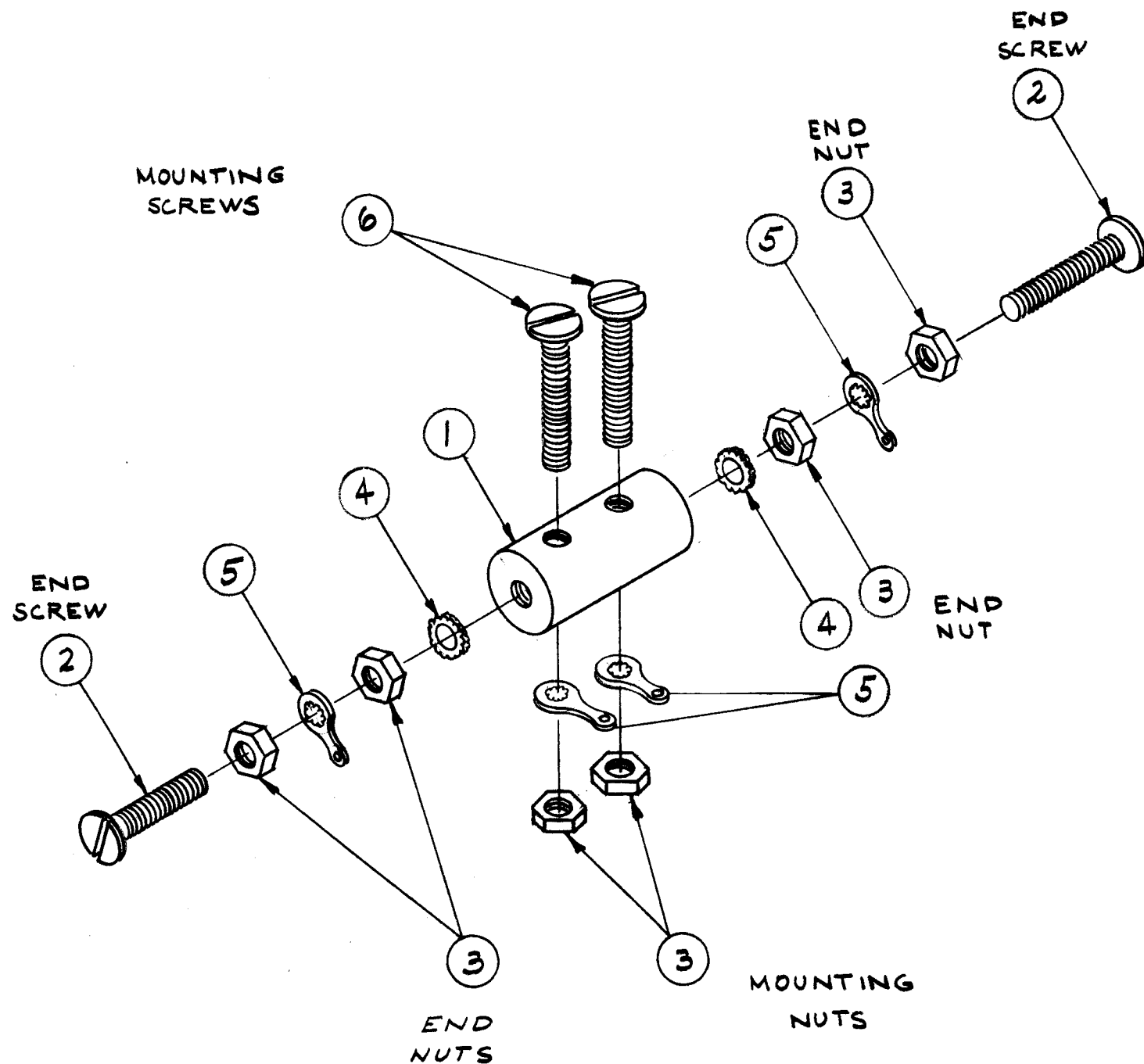
INSERT END SCREWS UNTIL THEY ARE IN CONTACT WITH MOUNTING SCREWS, THEN RETRACT END SCREWS 1 REVOLUTION AND LOCK BY MEANS OF TWO END NUTS.

FINISH

PAINT WITH ITEM 7 AND BAKE AT 70°C FOR 1/2 HR.

TEST

THERE SHOULD BE NO DC CONNECTION BETWEEN END SCREWS AND MOUNTING SCREWS AFTER BAKING.



| X | 7 | GL-104 | INSULEX 85/U | |
|------|------|--------------|--|--------|
| 2 | 6 | SCBS0632BC20 | SCREW MACHINE | |
| 4 | 5 | TE-104-2 | TERMINAL LOCKING | |
| 2 | 4 | LWEO6MRC | LOCKWASHER EXTERNAL | |
| 6 | 3 | NTH0632BC10 | NUT HEXAGON | |
| 2 | 2 | SCBS0632BC13 | SCREW MACHINE | |
| 1 | 1 | PX-246 | HOLDER, SPARK ROD | |
| REQ. | ITEM | PART NO. | DESCRIPTION | SYMBOL |
| | | | THE TECHNICAL MATERIEL CORP. MAMARONECK, NEW YORK | |
| | | | SPARK ROD HOLDER ASSY | |
| | | | MATERIAL | |
| | | | DRAWN: <u>C.G.</u> CHECKER: <u>MAT</u> FINAL APPROVAL: <u>F.O.S.</u> | |
| | | | DATE: <u>1-18-61</u> | |
| | | | FINISH & SPEC. NO. <u>A-2047</u> | |

| A NOT REQ FOR ATA SERIES | | 1/30/61 | 402B | P | JL | |
|--|-------------|---|---------|---------|-----------|-----------|
| SYM | DESCRIPTION | DATE | CH. NO. | DRAFTS | CHECKER | ENG. APP. |
| UNLESS OTHERWISE SPECIFIED: | | SCALE: | | | | |
| DIMENSIONS ARE IN INCHES | | MAXIMUM ALLOWABLE TOLERANCES HAVE BEEN DETERMINED AND ANY DEVIATIONS WILL BE CAUSE FOR REJECTION. | | | | |
| TOLERANCES ON FRACTIONS ± 1/64 DECIMALS ± .005 ANGLES ± 1/2° | | REMOVE ALL BURRS AND SHARP EDGES | | | | |
| | | REQ. PER UNIT | MODEL | SECTION | ASSY. NO. | DATE |
| | | USED ON | | | | |