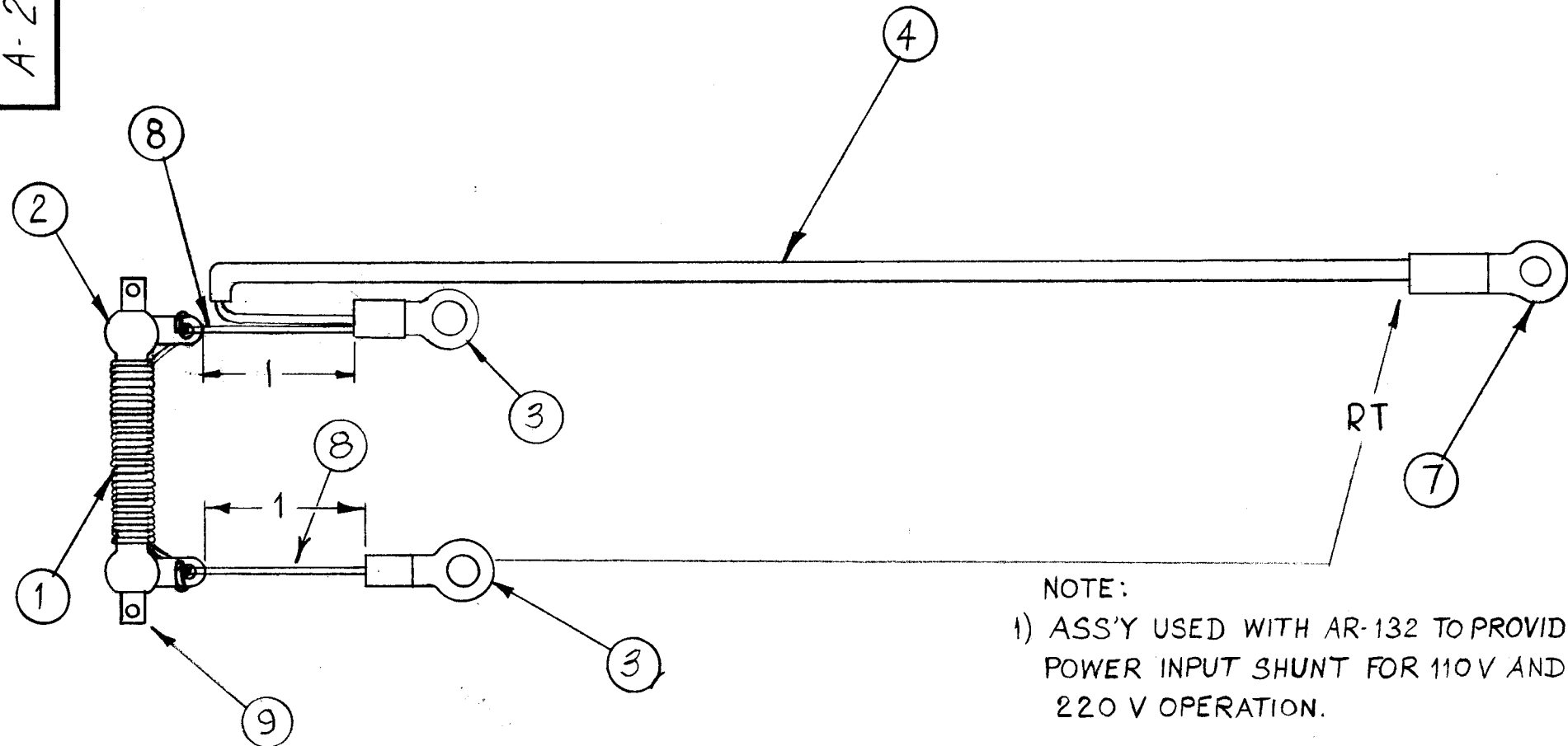


A-2034



NOTE:
1) ASS'Y USED WITH AR-132 TO PROVIDE POWER INPUT SHUNT FOR 110V AND 220 V OPERATION.

- PROCEDURE:
- 1~ WIND 36 TURNS OF WIRE (ITEM 1) ON RESISTOR (ITEM 2) CLOSE WOUND.
 - 2~ SOLDER 7 1/2" OF WIRE (ITEM 4) AND BUSS WIRE (ITEM 8) TO LUG (ITEM 3) AND SOLDER BUSS WIRE TO RESISTOR (ITEM 2) AS SHOWN.
 - 3~ SOLDER BUSS WIRE (8) TO LUG (3) & SOLDER TO OTHER END OF RESISTOR (2) AS SHOWN.
 - 4~ SOLDER LUG (ITEM 7) TO WIRE (ITEM 4) AS SHOWN.
 - 5~ COAT ENTIRE UNIT EXCEPT LUGS WITH U85.
 - 6~ BAKE AT 270° F FOR 30 MINUTES.

SPECIFICATIONS
(RT) RESISTANCE = .075 Ω
TOLERANCE = ± 10%
TEST EQUIPMENT: WHEATSTONE BRIDGE, MOD. RN-1 INDUSTRIAL INSTRUMENTS OR EQUIV.
~ NOTE ~
CHECK WITH WHEATSTONE BRIDGE USING ALLIGATOR CLIPS.

2	9	CU164-1	RET. RES.	
X	8	WL-100-4	WIRE, BUSS-BAR.	
1	7	TE-155-34170	SOLDERLESS TERMINAL	
X	6	BS-100	SOLDER, SOFT	
X	5	GL-104-2	INSULEX, U85	
7/2"	4	HWC 14 (19) UO	CABLE INSULATED	BLACK
2	3	TE-141-3	SOLDERLESS TERMINAL	
1	2	RW-109-28	RESISTOR, WIREWOUND, FIXED	
X	1	WI125-7	WIRE, CEROC (HI-TEMP).	

F	NOTE 2 DEL, ITEM 9 ADD, ITEM 1 WAS WI125	11.1.67	18586	NY.		FB	
E	IT 3 & 8 RELOC; PROCEDURE & SPECS REVISED	12.20.66	17546	WHD			
D	ITEM 1 WAS WI108-7	11.14.66	17254	WHD			
C	ADD. TEST EQUIP. NOTE	7/13.66	16532	HCA			
B	Added SPECIFICATIONS.						
	Added Note (2).	3/14/61	4425				
	Added REF "SEE Note 2".						
	Added (2) BKTS.						
	DIM 1" WAS 1/4".						
A	Item # 8 WAS WL-100-7	2-21-61	4242				
SYM	DESCRIPTION	DATE	CH. NO.	DRAFTS	CHECKER	ENG. APP.	

UNLESS OTHERWISE SPECIFIED:
DIMENSIONS ARE IN INCHES
TOLERANCES ON FRACTIONS ± 1/64 DECIMALS ± .005 ANGLES ± 1/2°
SCALE: MAXIMUM ALLOWABLE TOLERANCES HAVE BEEN DETERMINED AND ANY DEVIATIONS WILL BE CAUSE FOR REJECTION. REMOVE ALL BURRS AND SHARP EDGES

2	APP-4				12-9-60
REQ. PER UNIT	MODEL	SECTION	ASS'Y. NO.	DATE	

REQ. ITEM	PART NO.	DESCRIPTION	SYMBOL
THE TECHNICAL MATERIEL CORP. MAMARONECK, NEW YORK			
AR-133 ASS'Y.			
SHUNT POWER INPUT			
MATERIAL			
TYPE & TEMPER	HEAT TREAT. SPEC.	DRAWN	CHECKER
		RK	
FINISH & SPEC. NO.	ELEC. DES. APP.	MECH. DES. APP.	FINAL APPROVAL
			A-2034 F