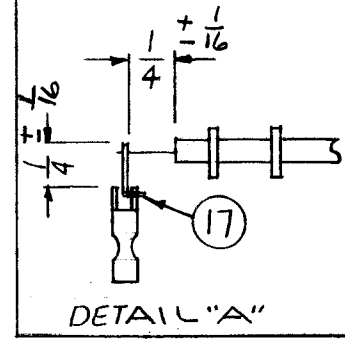
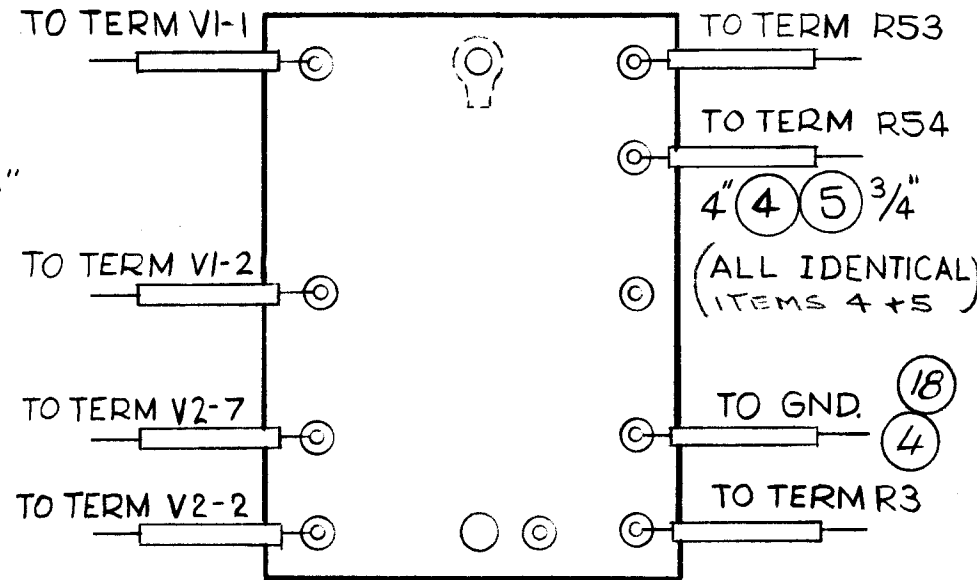
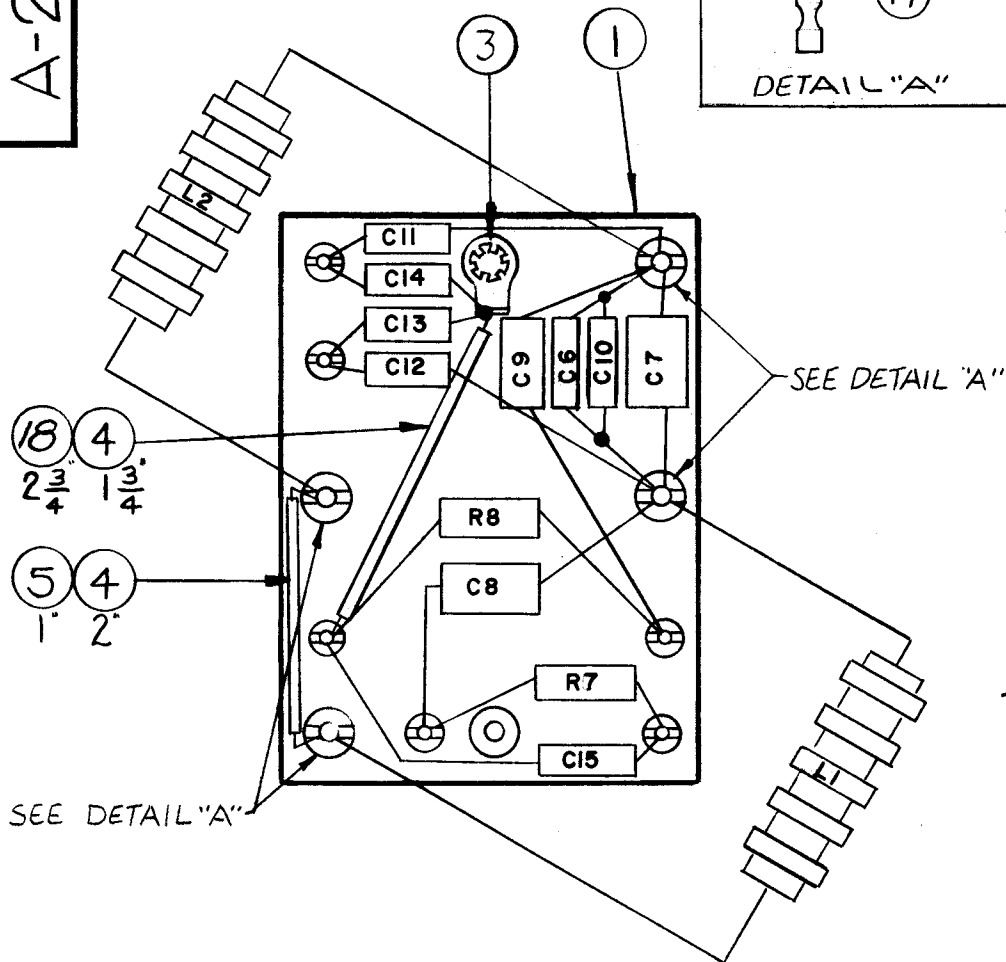


A-2029 C



NOTE~

ALL LEADS TO BE 4" LONG AND THEN CUT TO DESIRED LENGTH. ALL SLEEVING TO BE 3/4" LONG. (YELLOW.)



ALL LEADS GO TO BOTTOM TERM. BD. OF 200 K.C. OVEN (A-348)

NOTE~
 1-USE SLEEVING WHEREVER THERE IS DANGER OF SHORTING.
 2-ALL COMPONENTS MUST FIT INSIDE OUTER EDGE OF TERM. BD.
 3-FOR LETTERING, SEE LD-852.

X	18	PX104-1-034	INSULATION, SLEEVING	BLACK
X	17	WL100-4	WIRE, ELEC, BUSS	
X	16	BS-100	SOLDER SOFT	
1	15	RR104-673	RESISTOR, FIXED	R7
1	14	RR-104-582	RESISTOR, FIXED	R8
2	13	CL265	COIL, RF, FIXED	L2 L1
2	12	CC26UJ111G	CAPACITOR, FIXED	C10 C6
4	11	DELETED		
1	10	CM20F102G03		C8
2	9	CM15E270G03YY		C9,15
2	8	CM20F681G03		C14 C13
2	7	CC-102-1		C11 C12
1	6	CC-102-4	CAPACITOR, FIXED	C7
X	5	PX-104-2-034	INSULATION, SLEEVING (S ₂₀)	YEL.
36	4	WL-100-7	WIRE, ELEC, BUSS	
1	3	TE-104-2	TERMINAL, LOCKING	
4	2	DELETED		
1	1	LD852/A357	TOP TERM. BD.	

C	ADD IT. 18-QTY OF ITEM 5 WAS 11	7-13-72	20780	GE	9	9
B	ADDED IT. 17 & DETAIL 'A'	6-7-68	18940	HS	FB	HR
A	ON B/M. IT. 1 WAS "A357". IT 10 WAS "CM108102K". IT. 9 WAS "CM20E270G" "1" REQ. IT. 13 WAS A337. IT 3 WAS 10+REQ. ITS: 2 & 11 DELE.	10-26-64	12766	98	98	98
SYM	DESCRIPTION	DATE	CH. NO.	DRAFTS	CHECKER	ENG. APP.
UNLESS OTHERWISE SPECIFIED:		SCALE:				
DIMENSIONS ARE IN INCHES		MAXIMUM ALLOWABLE TOLERANCES HAVE BEEN DETERMINED AND ANY DEVIATIONS WILL BE CAUSE FOR REJECTION. REMOVE ALL BURRS AND SHARP EDGES				
TOLERANCES ON FRACTIONS ± 1/64 DECIMALS ± .005 ANGLES ± 1/2°						

1	TIS-3		A-2030	11-29-60
REQ. PER UNIT	MODEL	SECTION	ASS'Y. NO.	DATE
USED ON				

REQ. ITEM	PART NO.	DESCRIPTION	SYMBOL
		THE TECHNICAL MATERIEL CORP. MAMARONECK, NEW YORK	
		TOP TERM. BD.	
		COMPONENT ASS'Y (200 KC.)	
		R. UZZO	
		TYPE & TEMPER	CHECKER
		HEAT TREAT. SPEC.	FINAL APPROVAL
		FINISH & SPEC. NO.	ELEC. DES. APP. MECH. DES. APP.
			A-2029 C