

F	IT. 17 WAS "AX 147" ON FRONT VIEW CHGD. CENTER OF HOLES	7-3-67	18331	HCC	MM	FR	
E	IT. 18 WAS A204B. SCREWS WERE SLOTTED. # NOTE ADDED	3-14-67	17980	MM	MM	MM	
D	ITEM (20) WAS MS-2048	3-14-67	640	MM	MM	MM	
C	ITEM (11) WAS 32-3/8; 41-3/4 DIM. WAS 38-5/16	6-27-61	5147	S-D-L	MM	MM	
B	ITEM (2) WAS TK-108-14	6-9-61	4974	MM	MM	MM	
A	Dim 38 5/16 WAS A11916. Pictorial clarified on items (2, 4, 5, 6, 8, 11, 13, 15). Litter (6) dimensioned. Item 1 was TK-107-18. Item 2 was TK-108-18. Item 4 was TK-107-18. Item 5 was TK-107-18. Item 6 was TK-107-18. Item 8 was TK-107-18. Item 11 was TK-107-18. Item 13 was TK-107-18. Item 15 was TK-107-18. Item 16 was MS-2048. Item 17 was AX-147. Item 18 was A204B.	1/24/61	3972	MM	MM	MM	
SYM	ZONE	DESCRIPTION	DATE	CH. NO.	DRAFTS	CHECKER	ENG. APP.

UNLESS OTHERWISE SPECIFIED:

DIMENSIONS ARE IN INCHES

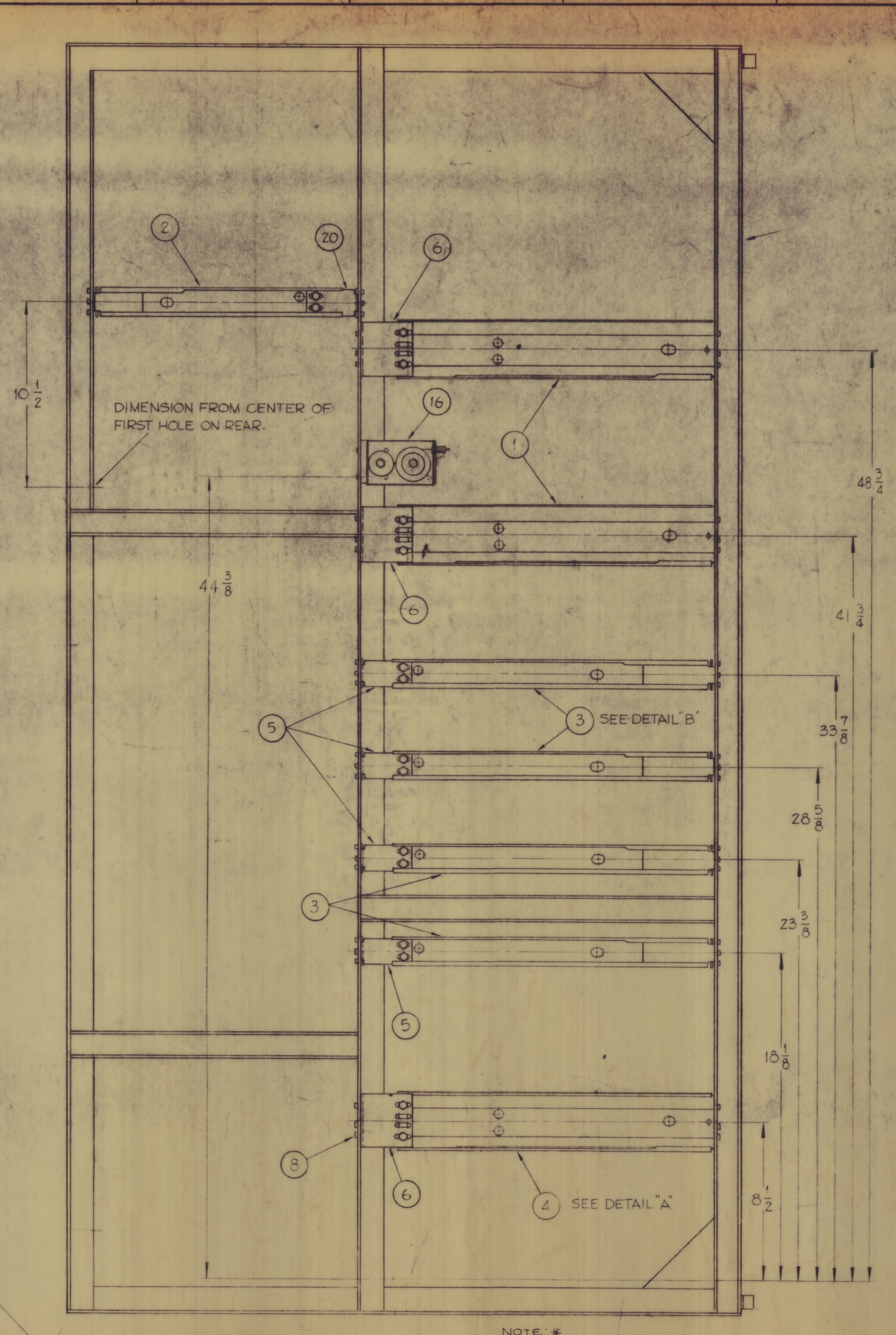
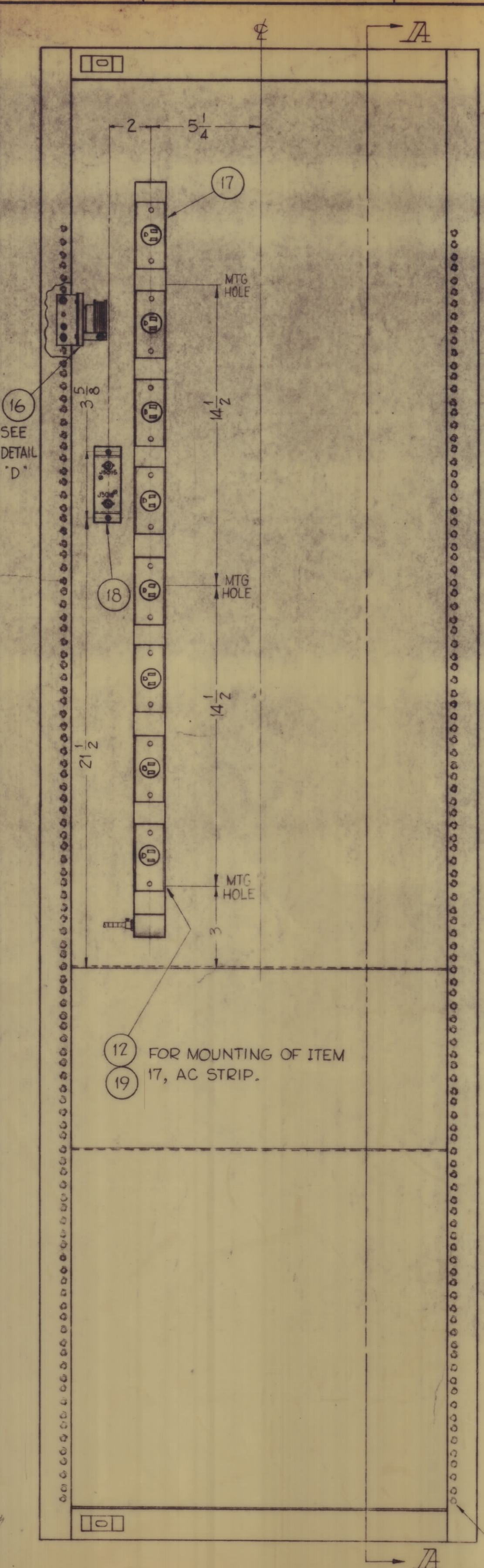
TOLERANCES ON FRACTIONS ± 1/64

DECIMALS ± .005

ANGLES ± 1/2°

SCALE 1/4, Do Not SCALE

MAXIMUM ALLOWABLE TOLERANCES HAVE BEEN DETERMINED AND ANY DEVIATIONS WILL BE CAUSE FOR REJECTION. REMOVE ALL BURRS & SHARP EDGES



~ FRONT ~

ALL DIMENSIONS FOR SLIDES AND NEGATORS TAKEN FROM THE CENTER OF THE FIRST HOLE.

NOTE: * THESE ITEMS ARE LISTED IN APPROPRIATE SYSTEMS M/L. ALL OTHER ITEMS ARE LISTED IN APPROPRIATE AUXILIARY FRAME M/L.

REQ.	ITEM	PART NO.	DESCRIPTION	SYMBOL
*	2	20	MS 2482	BRACKET, EXTENSION (FOR CPP-1)
*	5	19	SCBP0632BN5	SCREW, MACHINE
	1	18	A 2048-2	ATTENUATOR ASS'Y
	1	17	AX 66 7	AC POWER STRIP (8 CONNECTOR)
	2	16	SP 137-1	NEGATOR
*	4	15	NTH1032BN12	NUT, HEXAGON, DOUBLE CHAMFER
*	128	14	LWS10MRN	LOCKWASHER, SPRING TYPE
*	8	13	LWE10MRN	LOCKWASHER, EXTERNAL TOOTH
	7	12	LWE06MRN	LOCKWASHER, EXTERNAL TOOTH
	4	11	SCBP1032BN8	SCREW, MACHINE
	4	10	SCBP1024BN6	SCREW, MACHINE
	2	9	SCBP0540BN6	SCREW, MACHINE
*	128	8	SCHH1032SN8	SCREW, HEXAGON HEAD
	2	7	MS 2470	BRACKET, NEGATOR MOUNTING
*	6	6	MS 2458	ADAPTER, BKT, REAR 3" SLIDE
*	8	5	MS 2457	ADAPTER, BKT, REAR 1-3/4" SLIDE
*	1	4	TK106-18	SLIDE, STATIONARY
*	4	3	TK108-18	SLIDE, TILT
*	1	2	TK105-14	SLIDE, TILT
*	2	1	TK107-18	SLIDE, TILT

THE TECHNICAL MATERIEL CORP.			
MAMARONECK, NEW YORK			
ASSEMBLY, AC POWER STRIP, SLIDES AND NEGATORS (SP-137)			
DRAWN	CHECKED	FINAL APPROVAL	
J.C. Biela	MM	MM	MM
TYPE & TEMPER		HEAT TREAT. SPEC.	
FINISH & SPEC. NO.		ELEC. DES. APP.	

REQ. PER UNIT	MODEL	SECTION	ASSY. NO.	DATE
	GPT-10X		AX-239	11-2-60
USED ON				

A 2014 F

A

A 2014 F

DEFIANCE NO. 1059