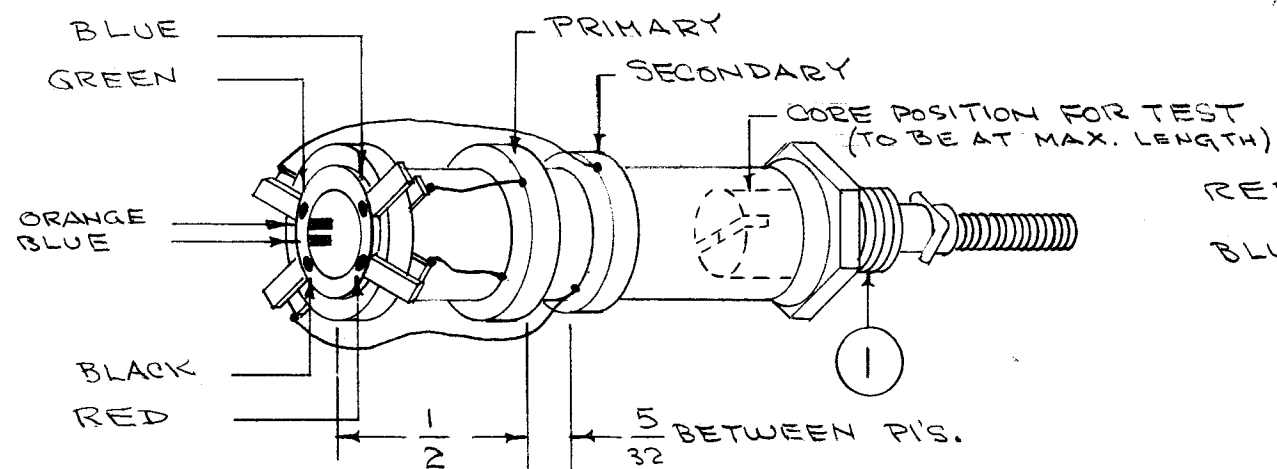


A-299

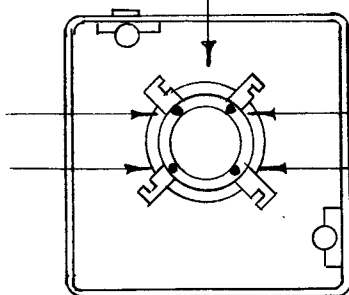
CEMENT TERMINAL RING TO COIL FORM WITH ITEM 3.  
 COLOR CODE END OF COIL FORM AS BELOW.



RED  
BLUE

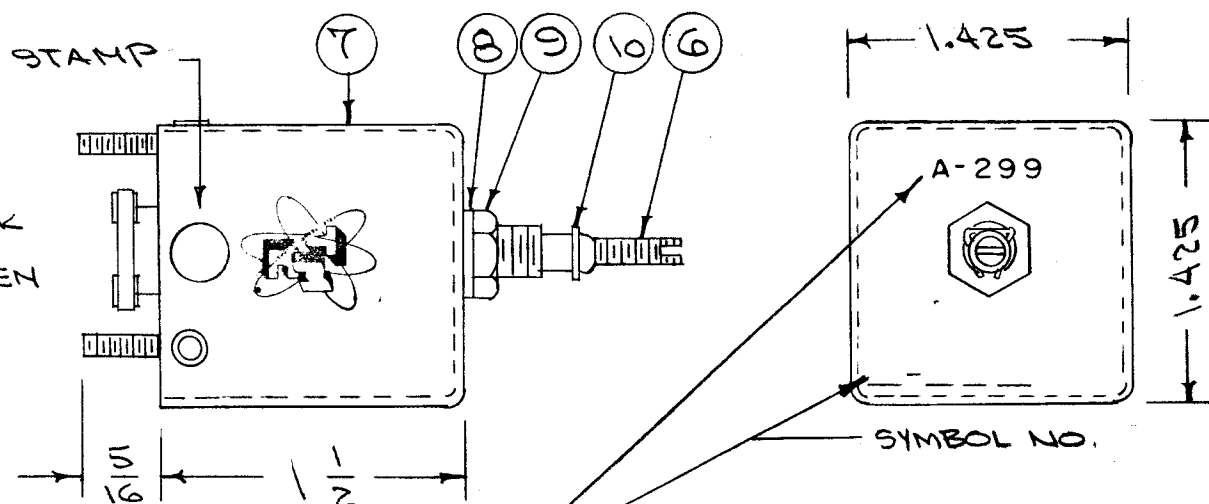
POSITION LUGS AS SHOWN  
 RELATIVE TO CAN.

APPROVAL STAMP



BLACK  
GREEN

STAMP TMC INSIGNIA ON SIDE OF CAN.



STAMP ASSY. NO. & SYMBOL NO.  
 ON CAN AFTER CAN IS ASSEMBLED  
 ON CHASSIS. (REF: LD-124)

WINDING MACHINE DATA

DRIVER GEAR	85
CAM GEAR	90
CAM	.093

WINDING DATA

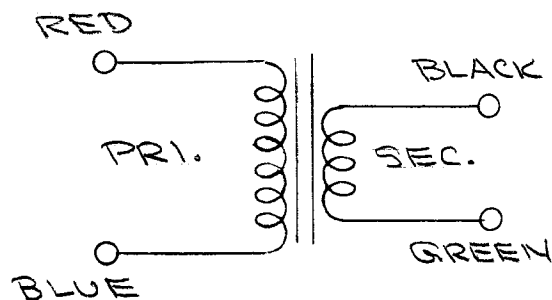
- 1- PRIMARY - STARTING AT RED LUG UNIV. WIND 50 1/4 TURNS OF ITEM 2 ENDING AT BLUE LUG.
- 2- SECONDARY - STARTING AT BLACK LUG UNIV. WIND 20 3/4 TURNS OF ITEM 2 ENDING AT GRN. LUG.
- 3- STAKE COIL ENDS WITH ITEM 3.
- 4- BAKE FOR 1/2 HOUR AT 215° F.
- 5- SATURATE COILS WITH ITEM A (Q. MAX).
- 6- BAKE FOR 1/2 HOUR AT 215° F.
- 7- REPEAT STEPS 5 & 6.
- 8- STRIP, TIN & SOLDER CONNECT LEADS AS ABOVE.

TEST DATA (SEE ABOVE FOR CORE POSITION).

TEXT LEADS TO BE 1/4" APPROX. NO CAN NEEDED FOR TEST.

	PRIMARY	SECONDARY
	RED/BLUE	BLACK/GREEN
L <sub>uh</sub>	50 (47.5-52.5)	10.5 (10-11)
Q	35 OR GREATER	50 OR GREATER
F	2.5 MC	7.9 MC

USE BOONTON Q METER 160A OR EQUIV.



FREQ. RANGE 3.95 - 8.3 Mc

REQ. ITEM	PART NO.	DESCRIPTION	SYMBOL
X 11	BS-100	SOLDER, SOFT	
1 10	SP-102	SPRING, LOCK P/O CF-114	
1 9	NT-102	NUT, HEX P/O CF-114	
1 8	LWI 25 LRC	WASHER, LOCK P/O CF-114	
1 7	A-173	CAN ASSY.	
1 6	CI-109-19	CORE	
1 5	TE-146-4	COLLAR & LUGS	
X 4	GL-102	Q. MAX	
X 3	GL-103	CEMENT (DUCO)	
X 2	WI-107-15	WIRE, MAGNET #34 DSC	
1 1	CF-114-3	COIL FORM	

ISSUE	ITEM	CHANGED FROM	DATE	CH. NO.	DRAFTS	CHECKER	ENG. APP.
B	1	Q WAS 40 (PRI.) & 68 (SEC.)	2/11/58	2	16	P.L.K.	J.P.R.
A	1	COMPLETE REVISION SUPERSEDES A-295	9/24/56	1	000	P.L.K.	A.J.J.

1	FFRD-6	104	A-328	9-24-56
REQ. PER UNIT	MODEL	PROJECT NO.	ASSY. NO.	DATE
USED ON				

THE TECHNICAL MATERIEL CORP. MAMARONECK, NEW YORK			
TRANSFORMER ASSY.			
MIXER, T602, BAND 6			
TYPE & TEMPER	HEAT TREAT. SPEC.	DRAWN	CHECKED
		P.L.K.	J.P.R.
FINISH & SPEC. NO.		ELEC. DES. APP.	MECH. DES. APP.
			A.J.J.
		A-299 B	