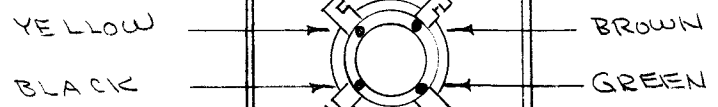
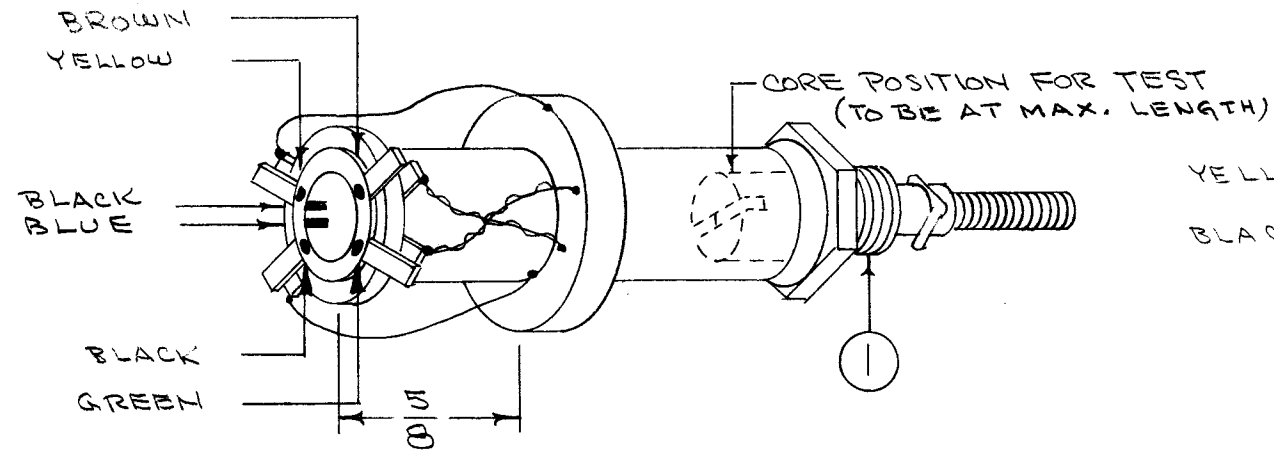


A-297

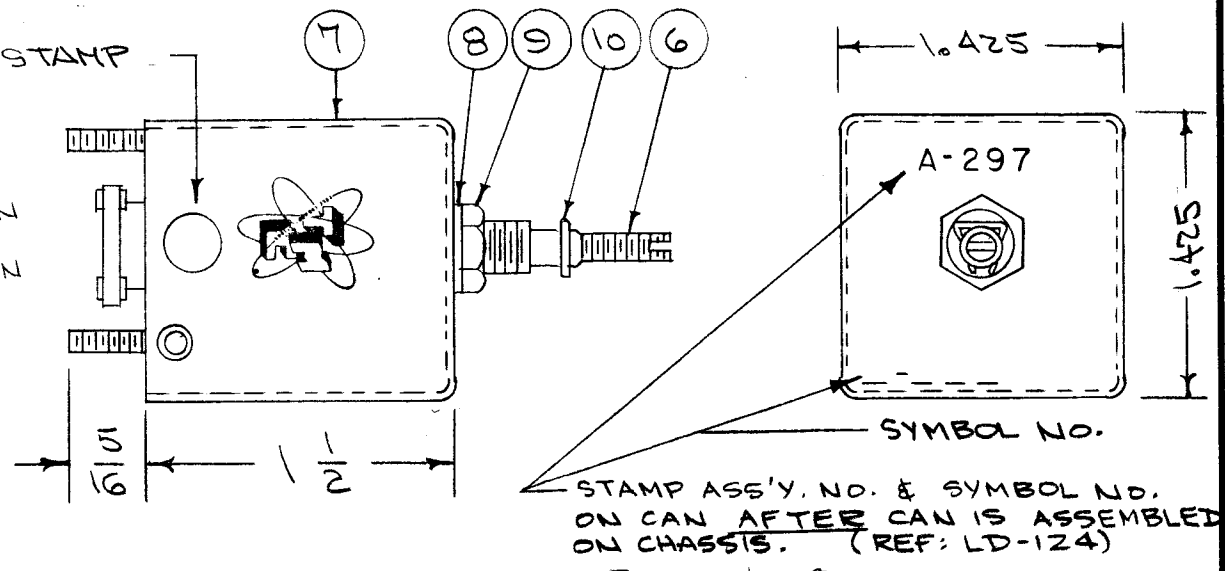
CEMENT TERMINAL RING TO COIL FORM WITH ITEM 3.
 COLOR CODE END OF COIL FORM AS BELOW.



POSITION LUGS AS SHOWN
 RELATIVE TO CAN.

APPROVAL STAMP

STAMP TMC INSIGNIA ON SIDE OF CAN.



WINDING MACHINE DATA

DRIVER GEAR	85
CAM GEAR	90
CAM	.093

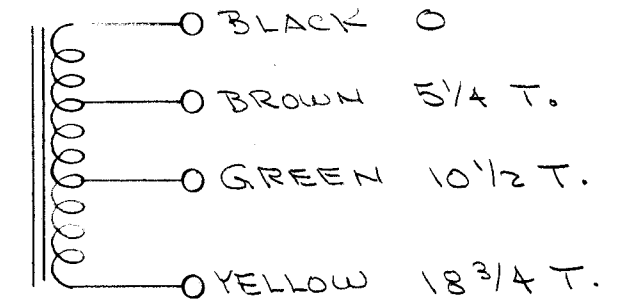
WINDING DATA

- 1- START WINDING ON BLACK LUG
- 2- BRING OUT TAP AT 5/4 TURNS FROM START TO BROWN LUG.
- 3- " " " " 10 1/2 " " " " GREEN " "
- 4- END WINDING AT 18 3/4 " " " " YELLOW " "
- 5- STAKE ENDS AND TAPS WITH ITEM 3.
- 6- BAKE FOR 1/2 HOUR AT 215° F.
- 7- SATURATE COIL WITH ITEM 4 (Q MAX).
- 8- BAKE FOR 1/2 HOUR AT 215° F.
- 9- REPEAT STEPS 7 & 8.
- 10- STRIP, TIN & SOLDER CONNECT ENDS & TAPS TO LUGS.

TEST DATA (SEE ABOVE FOR CORE POSITION.)
 TEST LEADS TO BE APPROX. 1/4". NO CAN NEEDED FOR TEST.

	LUGS	LUGS	LUGS
	YELLOW/BLACK	YELLOW/GREEN	YELLOW/BROWN
L _{μh}	7.7 (7.34 - 8.06)	1.7 (1.62 - 1.78)	4.2 (3.99 - 4.41)
Q	55 OR GREATER	35 OR GREATER	50 OR GREATER
f	7.9 MC	7.9 MC	7.9 MC

USE BOONTON Q METER 160A OR EQUIV.



FREQ. RANGE - 4.405 - 8.455 MC

REQ.	ITEM	PART NO.	DESCRIPTION	SYMBOL
X	11	BS-100	SOLDER, SOFT	
1	10	SP-102	SPRING LOCK P/O CF-114	
1	9	NT-102	NUT, HEX P/O CF-114	
1	8	LWI25 LRC	WASHER, LOCK P/O CF-114	
1	7	A-173	CAN ASSEMBLY	
1	6	CI-109-19	CORE	
1	5	TE-146-A	COLLAR & LUGS	
X	4	GL-102	Q MAX A27	
X	3	GL-103	CEMENT, DUCO	
X	2	WI-107-15	WIRE #34 DSC	
1	1	CF-114-3	COIL FORM	

ISSUE	ITEM	CHANGED FROM	DATE	CH. NO.	DRAFTS	CHECKER	ENG. APP.
C	1	Q WAS 68 (Yell/BK), 44 (Yell/Gm) & 57 (Yell/Brn)	2/1/58	3	16	P.L.K.	J.R.
B	1	COMPLETE REVISION SUPERCEDES A-293	8/30/56	2	2	P.L.K.	A.J.J.

1	FFRD-6	104	A-328	8-30-56
REQ. PER UNIT	MODEL	PROJECT NO.	ASS'Y. NO.	DATE
USED ON				

TYPE & TEMPER	HEAT TREAT. SPEC.	DRAWN	CHECKED	FINAL APPROVAL
		P.L.K.		A-297 C
FINISH & SPEC. NO.		ELEC. DES. APP.	MECH. DES. APP.	