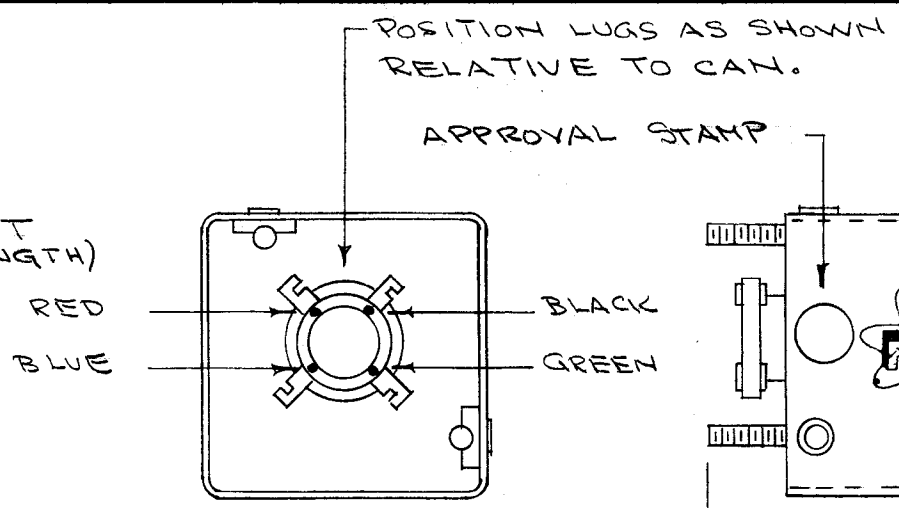
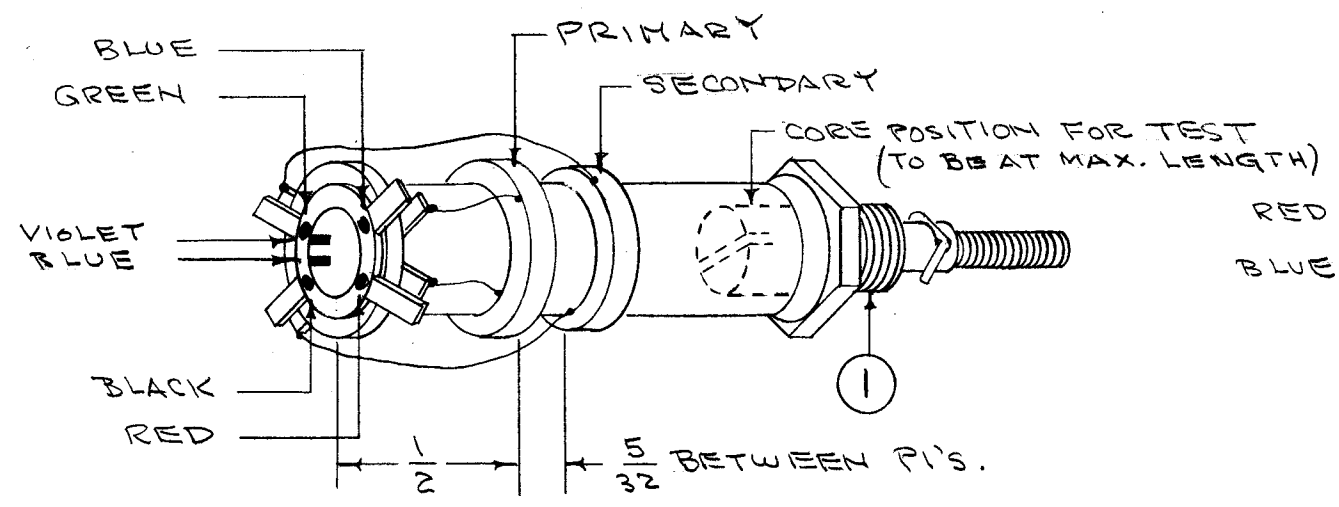
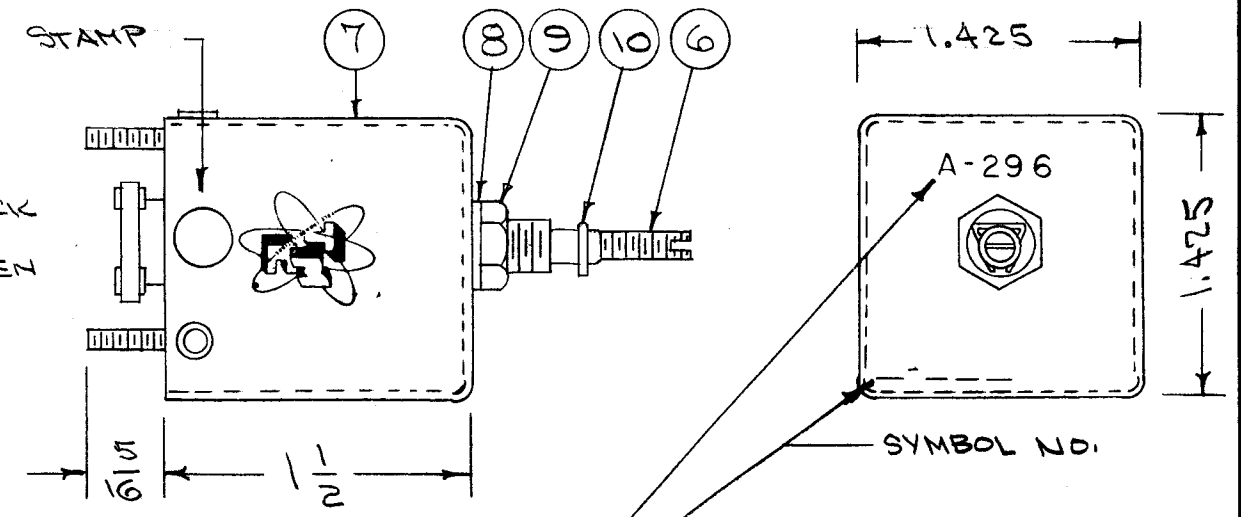


A-296

CEMENT TERMINAL RING TO COIL FORM WITH ITEM 3. COLOR CODE END OF COIL FORM AS BELOW.



STAMP TMC INSIGNIA ON SIDE OF CAN.



WINDING MACHINE DATA

DRIVER GEAR	85
CAM GEAR	90
CAM	.093

WINDING DATA

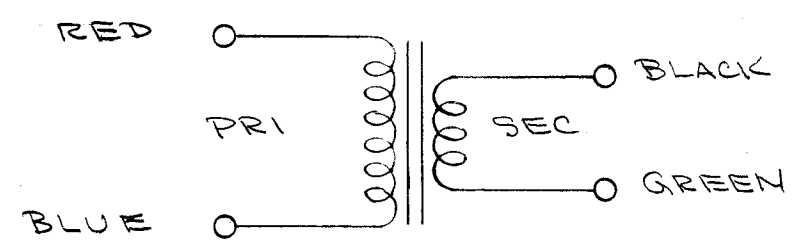
- 1- PRIMARY- STARTING ON RED LUG UNIV. WIND 50 1/4 TURNS OF ITEM 2 ENDING ON BLUE LUG.
- 2- SECONDARY- STARTING ON BLACK LUG UNIV. WIND 20 3/4 TURNS OF ITEM 2 ENDING ON GREEN LUG.
- 3- STAKE COIL ENDS WITH ITEM 3.
- 4- BAKE FOR 1/2 HOUR AT 215° F.
- 5- SATURATE COIL WITH ITEM A.
- 6- BAKE FOR 1/2 HOUR AT 215° F.
- 7- REPEAT STEPS 5 & 6.
- 8- STRIP, TIN AND SOLDER CONNECT LEADS TO LUGS.

TEST DATA (SEE ABOVE FOR CORE POSITION)

TEST LEADS TO BE APPROX. 1/4". NO CAN NEEDED FOR TEST.

	PRIMARY	SECONDARY
	RED/BLUE	BLACK/GREEN
L _{uh}	50 (47.5 - 52.5)	10.5 (10 - 11)
Q	35 OR GREATER	50 OR GREATER
f	2.5 MC	7.9 MC

USE BOONTON Q METER 160A OR EQUIV.



FREQ. RANGE - 3.95 - 8.3 MC

REQ.	ITEM	PART NO.	DESCRIPTION	SYMBOL
X	11	BS-100	SOLDER, SOFT	
1	10	SP-102	SPRING LOCK P/O CF-114	
1	9	NT-102	NUT, HEX P/O CF-114	
1	8	LW125LRC	WASHER, LOCK P/O CF-114	
1	7	A-113	CAN ASSEMBLY	
1	6	CI-109-19	CORE	
1	5	TE-146-A	COLLAR & LUGS	
X	4	GL-102	Q MAX A-27	
X	3	GL-103	CEMENT, DUCO	
X	2	WI-107-15	WIRE, #34 DSC	
1	1	CF-114-3	COIL FORM	

ISSUE	ITEM	CHANGED FROM	DATE	CH. NO.	DRAFTS	CHECKER	ENG. APP.
B	1	Q WAS 40 IN PRI., 65B IN SEC.	3/1/57	2	6	P.L.K.	
A	1	COMPLETE REVISION SUPERCEDES A-292	8/30/56	1	1	P.L.K. A.J.J.	

TOLERANCES		SCALE:	
DEC. DIM. ±		MAXIMUM ALLOWABLE TOLERANCES HAVE BEEN DETERMINED AND ANY DEVIATIONS WILL BE CAUSE FOR REJECTION. REMOVE ALL BURRS AND SHARP EDGES	
FRAC. DIM. ±			
ANGULAR DIM. ±			

1	FFRD-6	104	A-328	
REQ. PER UNIT	MODEL	PROJECT NO.	ASS'Y. NO.	DATE
USED ON				

REQ.	ITEM	PART NO.	DESCRIPTION	SYMBOL
THE TECHNICAL MATERIEL CORP. MAMARONECK. NEW YORK				
STOCK SIZE				
TRANSFORMER ASSY				
MATERIAL				
RF T601 BAND 6				
TYPE & TEMPER		HEAT TREAT. SPEC.	DRAWN	CHECKED
			P.L.K.	A.J.J.
FINISH & SPEC. NO.		ELEC. DES. APP.	MECH. DES. APP.	
				A-296 B