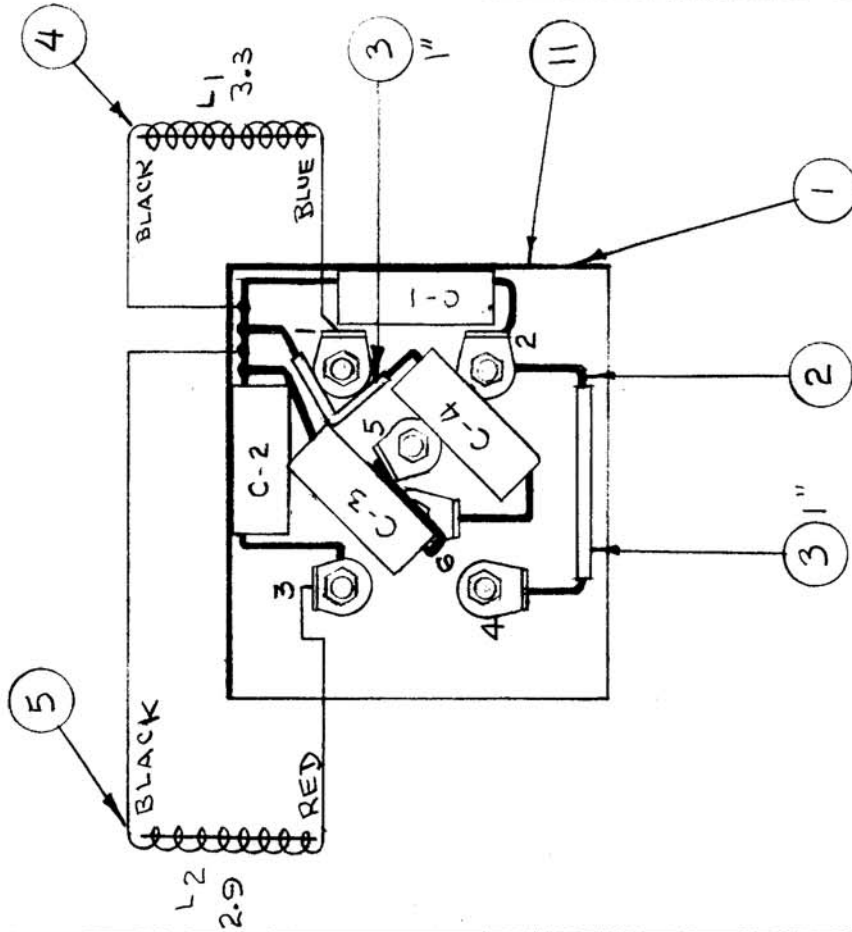


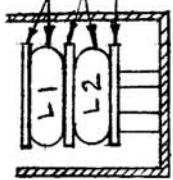
IF IT IS FOUND DESIRABLE TO CHANGE ANY TOLERANCE OR OTHER DETAIL SPECIFIED ON THIS DRAWING NOTIFY THE PURCHASER PROMPTLY.

MAXIMUM ALLOWABLE TOLERANCES HAVE BEEN DETERMINED AND DEVIATIONS WILL BE CAUSE FOR REJECTION. REMOVE ALL BURRS AND SHARP EDGES



BOTTOM VIEW OF TOP COVER

NOTE: DO NOT PAINT STUD END



NOTE POSITION OF COILS

TIE ITEMS 4, 5 AND 12 TOGETHER WITH ITEM 13 BEFORE INSERTING IN CAN.

A-279

USED ON

MODEL	PROJECT NO.	ASSY. NO.	DATE
FX-100	160	11	12-18-52

REQ. ITEM	PART NO.	DESCRIPTION	SYMBOL
X 14	GL-100	POTTING COMPOUND	
X 13	CD-100-2	CORD LACING, NYLON	
3	WA-110-2	WASHER, PAPER	
1	IM-109	INSULATION	
1	CK-129	SCHEMATIC DIAGRAM	
1	CM-35-C-152J	CAPACITOR, FIXED MICA	C-4
1	CM-35-C-272J	CAPACITOR, FIXED MICA	C-3
1	CM-35-C-102J	CAPACITOR, FIXED MICA	C-2
1	CM-35-C-103J	CAPACITOR, FIXED MICA	C-1
1	CL-106-1	TOROIDAL COIL - 3.3 H	L-1
1	CL-106-2	TOROIDAL COIL - 2.9 H	L-2
2"	PX-104-1-.034	INSULATION, SLEEVING-F.G.	
2"	WL-100-7	BUSS-BAR, TINNED	
1	A-280	CASE ASSEMBLY	

THE TECHNICAL MATERIEL CORP.
MAMARONECK, NEW YORK

FILTER ASSEMBLY

FX-100

16-12-17-52

DRAWN
C.D.D.

ELEC. DES. APP.

MECH. DES. APP.

CHECKED

FINAL APPROVAL

A-279

ISSUE ITEM	CHANGED FROM	DATE	CN. NO.	DRAFTS CHECKER	ENG. APP.

SCALE

DRILL, PUNCH, COMMERCIAL STOCK SIZES AND MANUFACTURERS TOLERANCES ARE NOT INCLUDED.

ALL OTHERS DEC. DIM. ± FRAC. DIM. ± ANGULAR DIM. ±