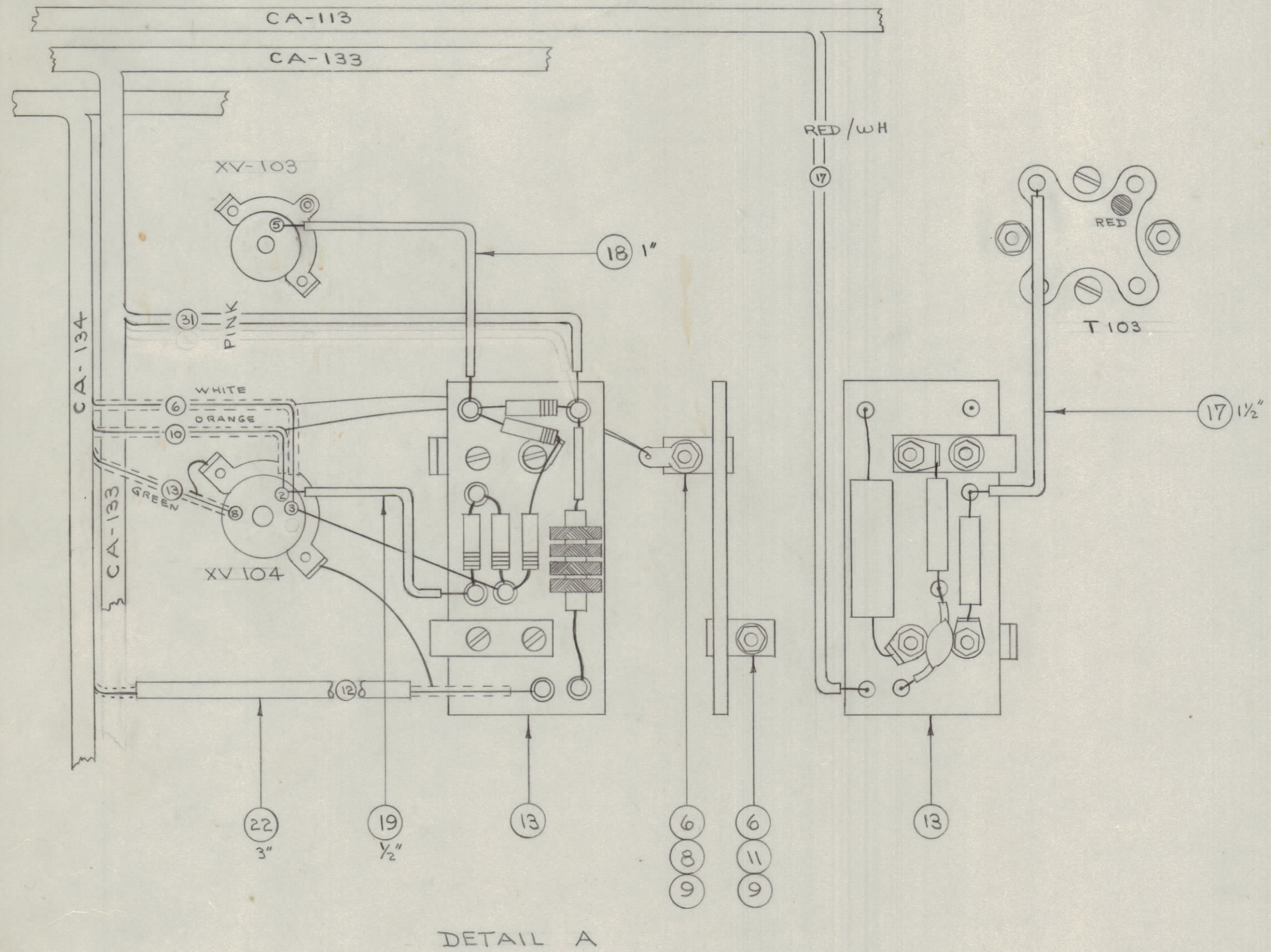
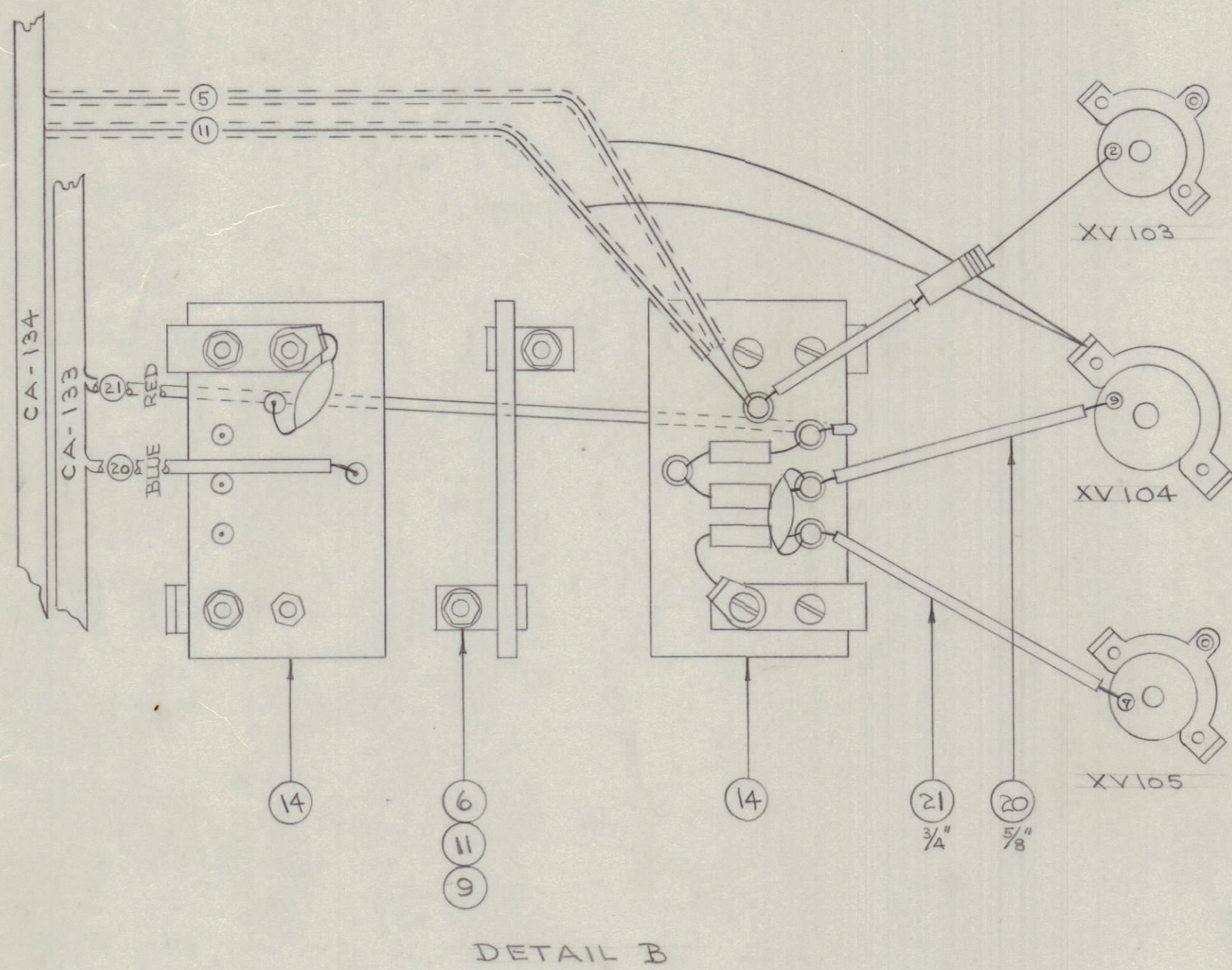


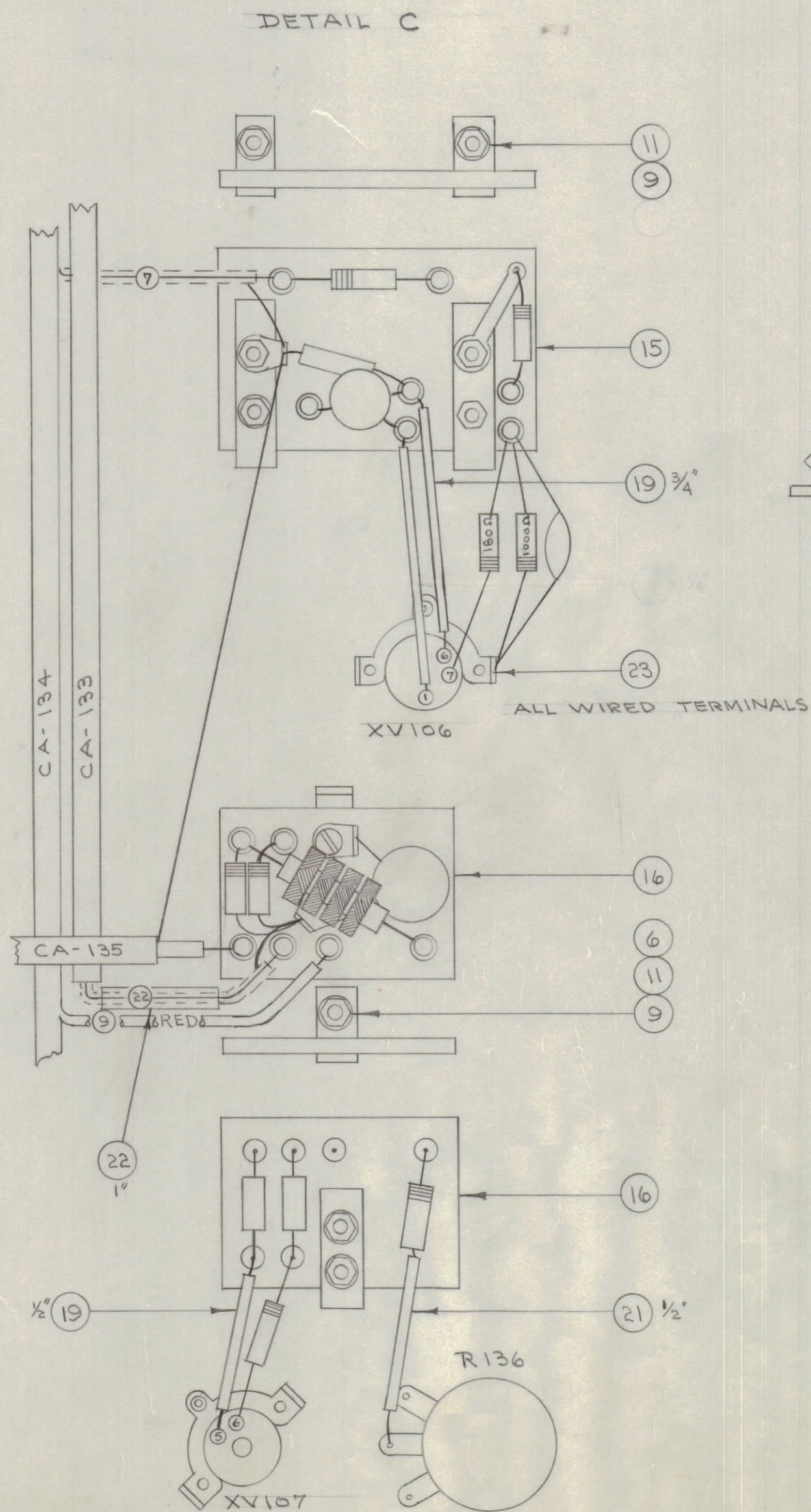
IF IT IS FOUND DESIRABLE TO CHANGE ANY TOLERANCE OR OTHER DETAIL SPECIFIED ON THIS DRAWING NOTIFY THE PURCHASER PROMPTLY.
 MAXIMUM ALLOWABLE TOLERANCES HAVE BEEN DETERMINED AND DEVIATIONS WILL BE CAUSE FOR REJECTION. REMOVE ALL BURRS AND SHARP EDGES.



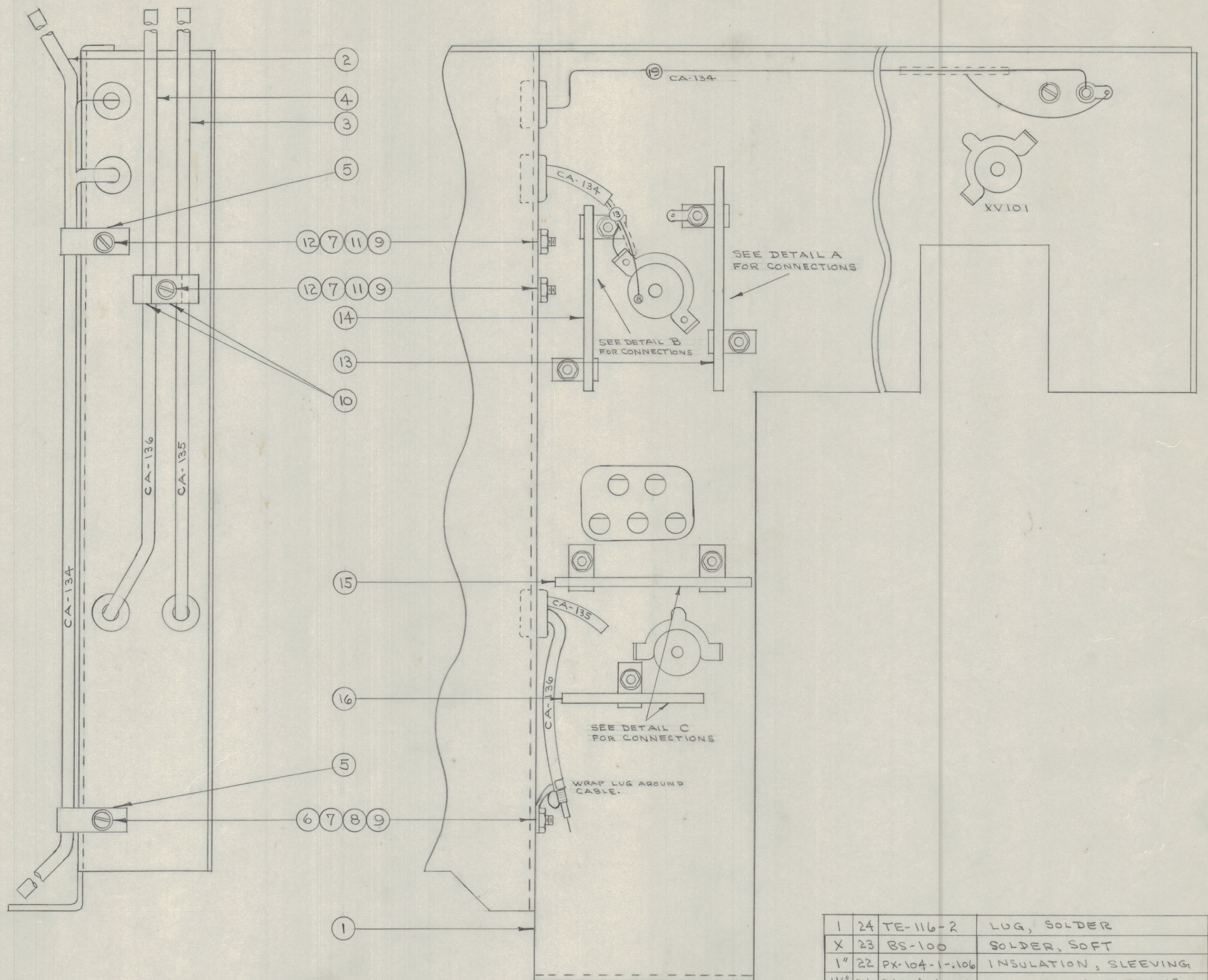
DETAIL A



DETAIL B



DETAIL C



NOTICE TO PERSONS RECEIVING THIS DRAWING

THE TECHNICAL MATERIEL CORPORATION claims proprietary right in the material disclosed hereon. This drawing is issued in confidence for engineering information only and may not be reproduced or used to manufacture anything shown hereon without permission from THE TECHNICAL MATERIEL CORPORATION to the user. This drawing is loaned for mutual assistance and is subject to recall at any time.

Property of:
 THE TECHNICAL MATERIEL CORPORATION
 MAMARONECK, NEW YORK

1	24	TE-116-2	LUG, SOLDER
X	23	BS-100	SOLDER, SOFT
1"	22	PX-104-1-106	INSULATION, SLEEVING
1/4"	21	PX-104-4-.034	INSULATION, SLEEVING
3/8"	20	PX-104-6-.034	INSULATION, SLEEVING
1/4"	19	PX-104-2-.034	INSULATION, SLEEVING
1"	18	PX-104-5-.034	INSULATION, SLEEVING
1/2"	17	PX-104-1-.034	INSULATION, SLEEVING
1	16	A-465	TERM. BD. ASSY. (BFO)
1	15	A-464	TERM. BD. ASSY. (REACTANCE)
1	14	A-462	TERM. BD. ASSY. (AUDIO)
1	13	A-463	TERM. BD. ASSY. (DETECTOR)
2	12	SCBS0632BC5	SCREW, MACHINE
7	11	LW506MRC	LOCKWASHER, SPLIT
2	10	CU-104-4	CLAMP, CABLE
10	9	NTH0632BC8	NUT, HEX
2	8	TE-104-2	TERMINAL, LOCKING
3	7	FW06MRC	WASHER, FLAT
6	6	SCBS0632BC6	SCREW, MACHINE
2	5	CU-102-4	CLAMP, CABLE
1	4	CA-136	CABLE, R.F.
1	3	CA-135	CABLE, R.F.
1	2	CA-134	CABLE, (SIGNAL)
1	1	A-261	CEN. CHASSIS CABLE ASSY.

REQ. ITEM	PART NO.	DESCRIPTION	SYMBOL
THE TECHNICAL MATERIEL CORP. MAMARONECK, NEW YORK			
STOCK SIZE			
MATERIAL WEIGHT PER PC.			
TYPE & TEMPER			
HEAT TREAT. SPEC.			
FINISH & SPEC. NO.			
CEN. CHASSIS CABLE ASSY.			

MODEL	PROJECT NO.	ASSY. NO.	DATE
FFR-2	104	A-274	12-27-54

ISSUE	ITEM	CHANGED FROM	DATE	CN. NO.	DRAFTS	CHECKER	ENG. APP.
C	1	REBORN. TERM. BDL. ADDED	4/30/53	2	C.D.D.	W.D.	[Signature]