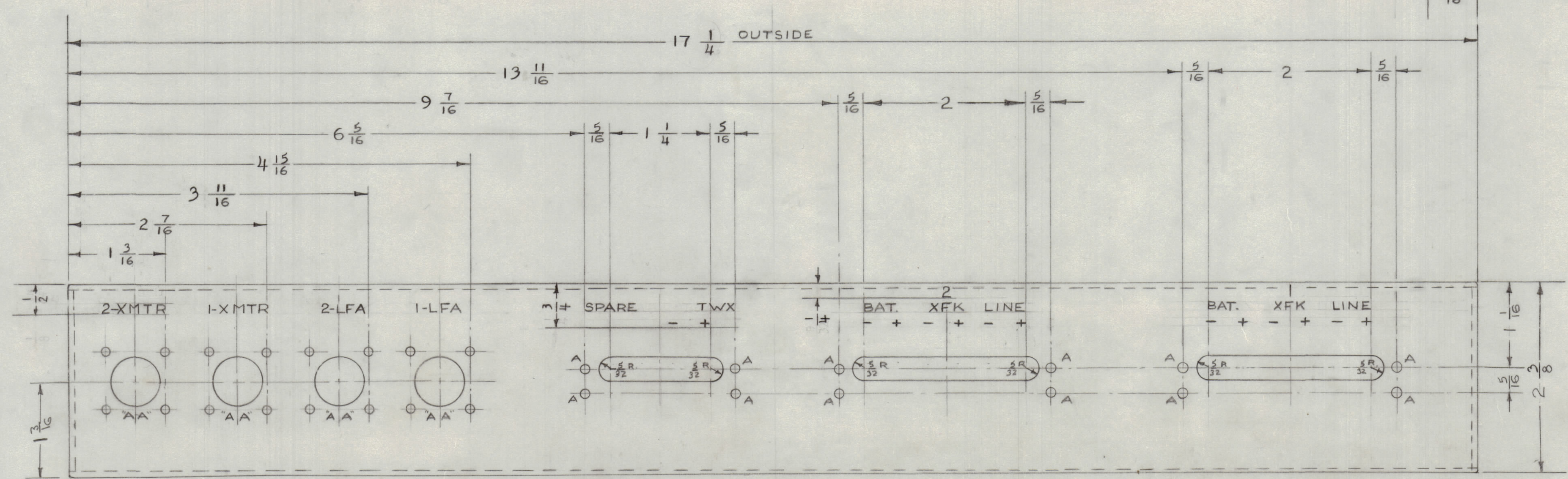
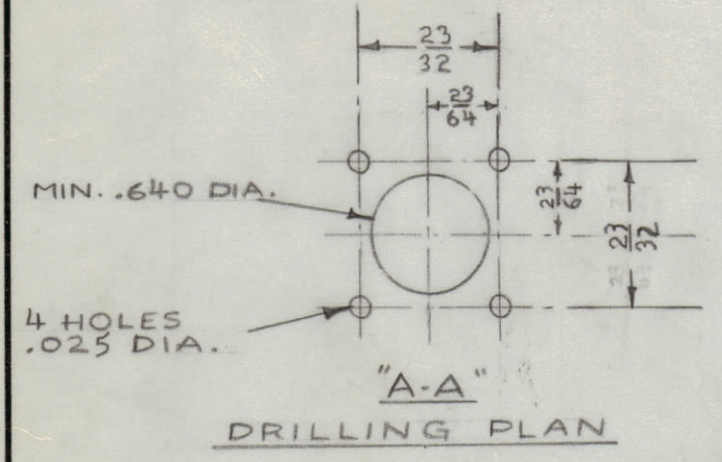
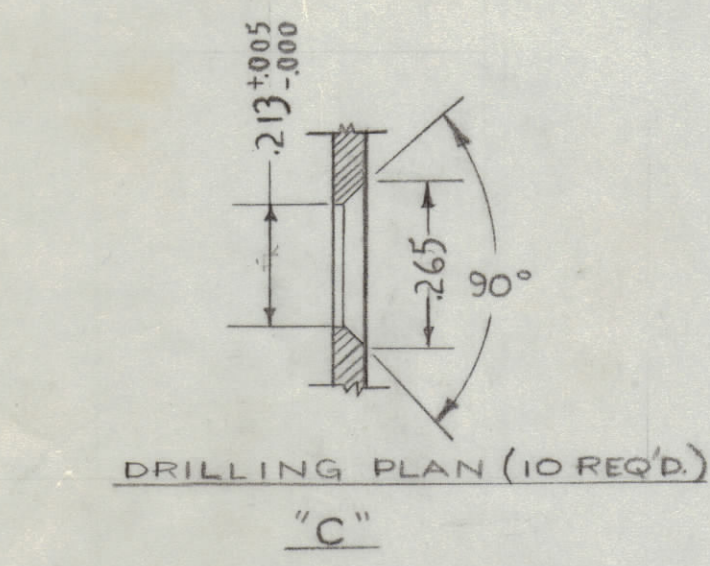
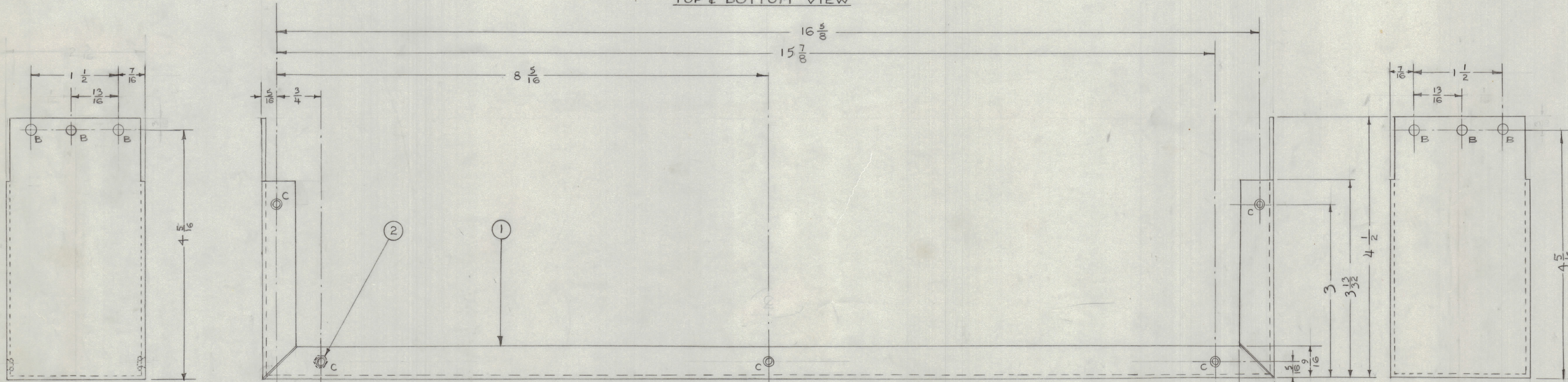


IF IT IS FOUND DESIRABLE TO CHANGE ANY TOLERANCE OR OTHER DETAIL SPECIFIED ON THIS DRAWING NOTIFY THE PURCHASER PROMPTLY.
 MAXIMUM ALLOWABLE TOLERANCES HAVE BEEN DETERMINED AND DEVIATIONS WILL BE CAUSE FOR REJECTION. REMOVE ALL BURRS AND SHARP EDGES.

RELEASED

TOP & BOTTOM VIEW



REAR VIEW

NOTE 1: ALL LETTERING TO BE 1/8" HIGH BLACK COVER WITH S-113-FUNGUS VARNISH.

LEGEND
 "A" - 5/32 D (.156) 12 REQ'D.
 "B" - 13/64 D (.203) 6 REQ'D.

NOTICE TO PERSONS RECEIVING THIS DRAWING
 THE TECHNICAL MATERIEL CORPORATION claims proprietary right in the material disclosed hereon. This drawing is issued in confidence for engineering information only and may not be reproduced or used to manufacture anything shown hereon without permission from THE TECHNICAL MATERIEL CORPORATION to the user. This drawing is loaned for mutual assistance and is subject to recall at any time.
 Property of:
 THE TECHNICAL MATERIEL CORPORATION
 MAMARONECK, NEW YORK

NOTE
 1/16" INSIDE RADIUS ON ALL BENDS. ALL DIMENSIONS TAKEN FROM OUTSIDE OF BENDS. ALL BENDS 90°.

ISSUE	ITEM	CHANGED FROM	DATE	CN. NO.	DRAFTS	CHECKER	ENG. APP.
A	1	5404 IRIDITE WAS SLOI GAUSTIC DIP	9/7/52	1001	A.B.		EMN
TOLERANCES							
SCALE: FULL							
DRILL PUNCH, COMMERCIAL STOCK SIZES AND MANUFACTURERS TOLERANCES ARE NOT INCLUDED.							

EPP	162	A-254	11-11-52
MODEL	PROJECT NO.	ASSY. NO.	DATE
USED ON			

10	2	SM-107-23	INSERT, HEX.
1	1	MS-178	CHASSIS (NO DRAWING)
REQ. ITEM	PART NO.	DESCRIPTION	
.064 THK.		THE TECHNICAL MATERIEL CORP.	
STOCK SIZE		MAMARONECK, NEW YORK	
ALUMINUM		WRAP AROUND	
MATERIAL		WEIGHT PER PC.	
525-H32		ASSEMBLY	
TYPE & TEMPER		16	11-11-52
-		DRAWN	ELEC. DES. APP.
HEAT TREAT. SPEC.		11-11-52	MECH. DES. APP.
5404 IRIDITE		CHECKED	FINAL APPROVAL
FINISH & SPEC. NO.		A-255	

A-255 A