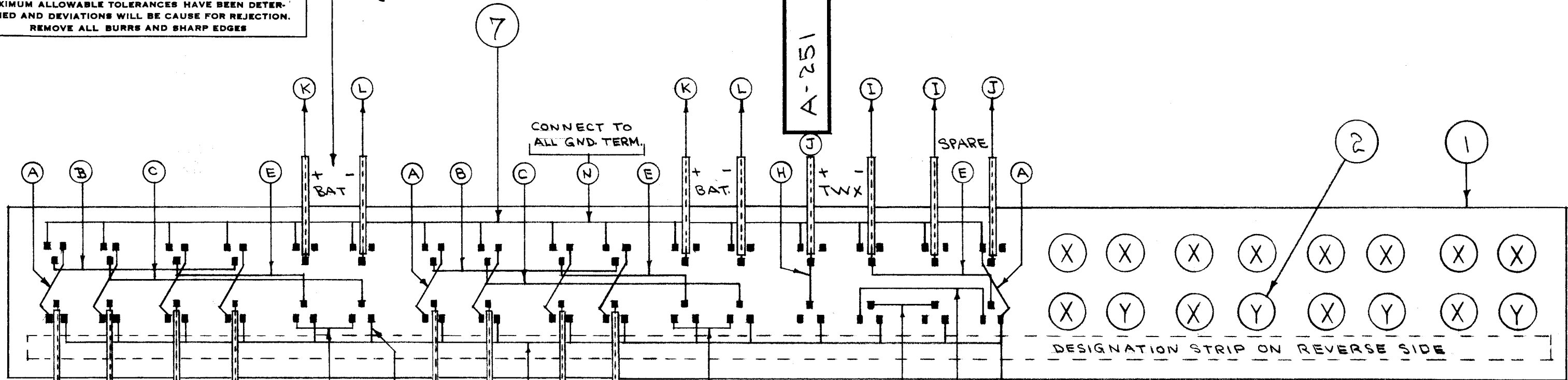


IF IT IS FOUND DESIRABLE TO CHANGE ANY TOLERANCE OR OTHER DETAIL SPECIFIED ON THIS DRAWING NOTIFY THE PURCHASER PROMPTLY.

MAXIMUM ALLOWABLE TOLERANCES HAVE BEEN DETERMINED AND DEVIATIONS WILL BE CAUSE FOR REJECTION. REMOVE ALL BURRS AND SHARP EDGES

INDICATES MARKINGS FOR TERMINAL STRIPS, MAIN CHASSIS. (FOR CONNECTIONS ONLY)

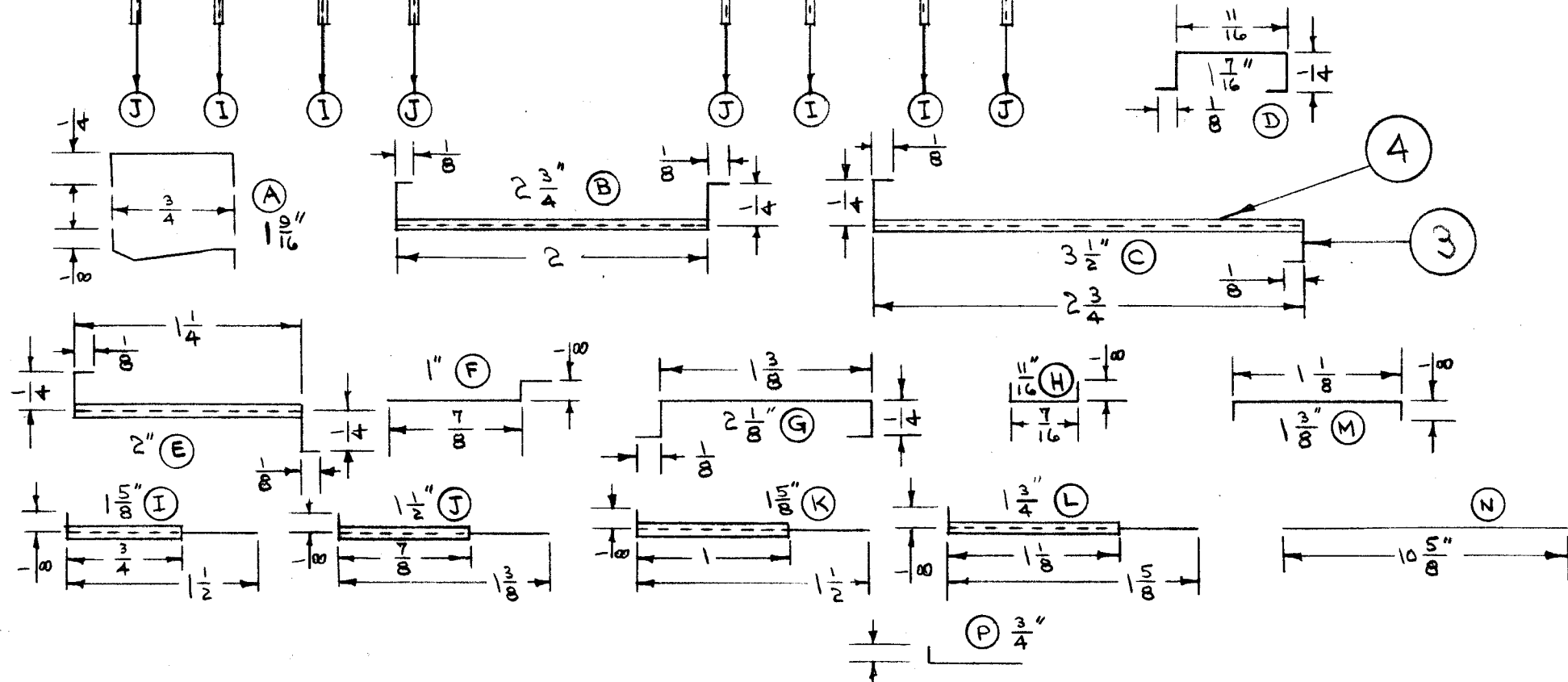


CONNECT TO ALL GND. TERM.

SPARE

DESIGNATION STRIP ON REVERSE SIDE

NOTE 1: MODIFY ITEM 1 AS FOLLOWS -
 (a) REMOVE END BRACKETS AND SCREWS
 (b) REMOVE 16 JACKS FROM PLACES MARKED X AND Y. LABEL JACKS JJ-024 AND RETURN TO STOCK.
 NOTE 2: INSTALL ITEM 2 IN HOLES MARKED Y. USE ORIGINAL SCREWS.



REQ.	ITEM	PART NO.	DESCRIPTION	SYMBOL
2'	7	WL-100-3	WIRE, BUSS BAR #14	
1	6	TE-104-2	TERMINAL, LOCKING	
X	5	BS-100	SOLDER, SOFT	
2 1/2'	4	PX-104-1-034	INSULATION, SLEEVING	
12'	3	WL-100-6	WIRE, BUSS BAR #20	
4	2	CA-132	CABLE, VIDEO JACK	
1	1	TM-103-3	PANEL, JACK	

ISSUE	ITEM	CHANGED FROM	DATE	CN. NO.	DRAFTS	CHECKER	ENG. APP.
B	1	TECH. BOARD MARKINGS FOR CONNECTIONS ADDED	2-20-54	2	C.D.D.	M.H.S.	W.D.Z.
A	1	REDRAWN WITH CHANGES	2-17-53	1	C.D.D.	M.H.S.	[Signature]

TOLERANCES		SCALE:
ALL OTHERS	DEC. DIM. ± FRAC. DIM. ± ANGULAR DIM. ±	#

EPP	162	A-253	11/14/52
MODEL	PROJECT NO.	ASS'Y. NO.	DATE
USED ON			

REG.	ITEM	PART NO.	DESCRIPTION	SYMBOL
THE TECHNICAL MATERIEL CORP. MAMARONECK, NEW YORK				
JACK STRIP ASSEMBLY				
STOCK SIZE				
MATERIAL		WEIGHT PER PC.		
TYPE & TEMPER		C.D.D. 2/17/53 M.H.S. [Signature]		
HEAT TREAT. SPEC.		DRAWN ELEC. DES. APP. MECH. DES. APP.		
FINISH & SPEC. NO.		M.H.S. PJB CHECKED FINAL APPROVAL		
		A-251 B		