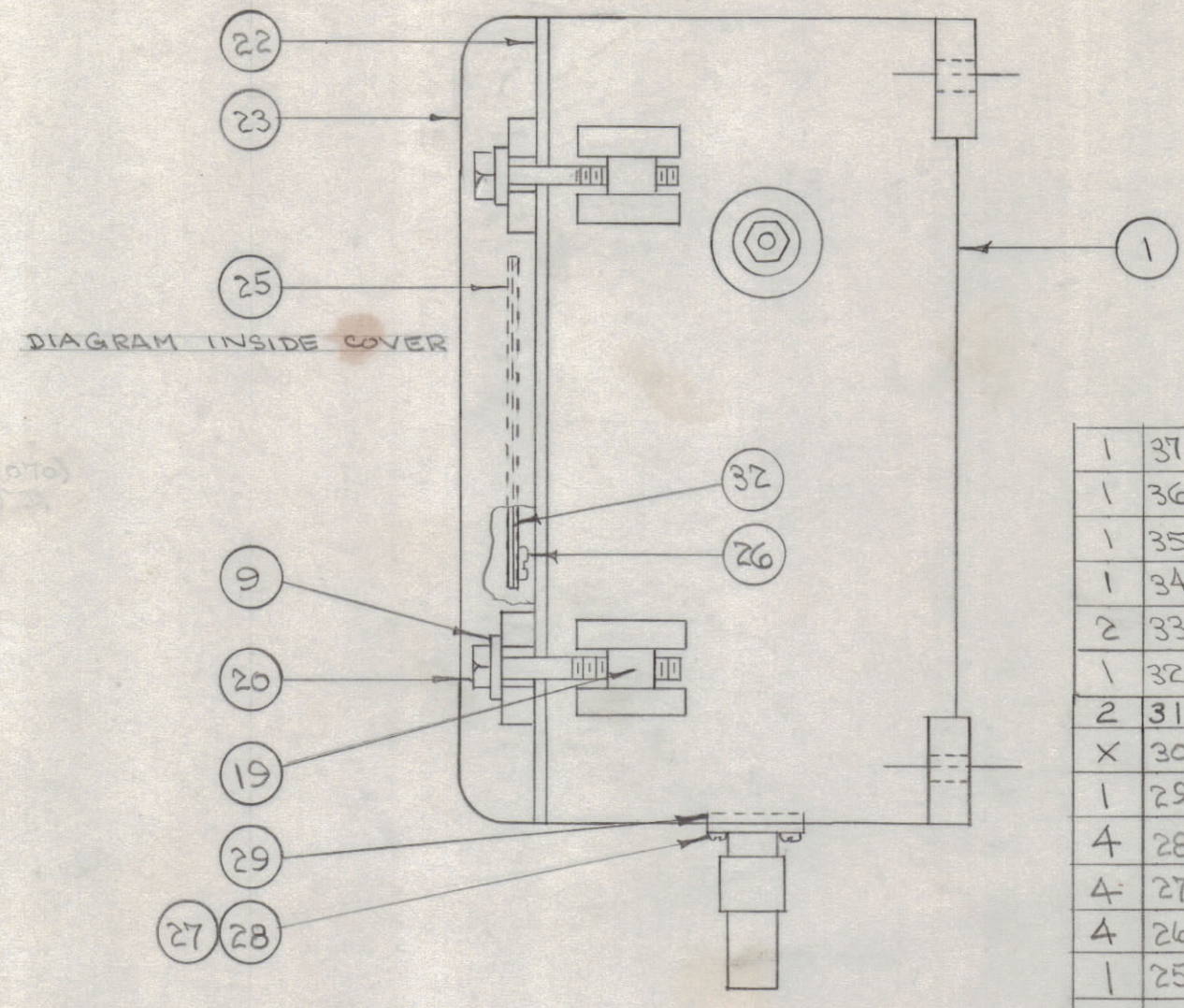
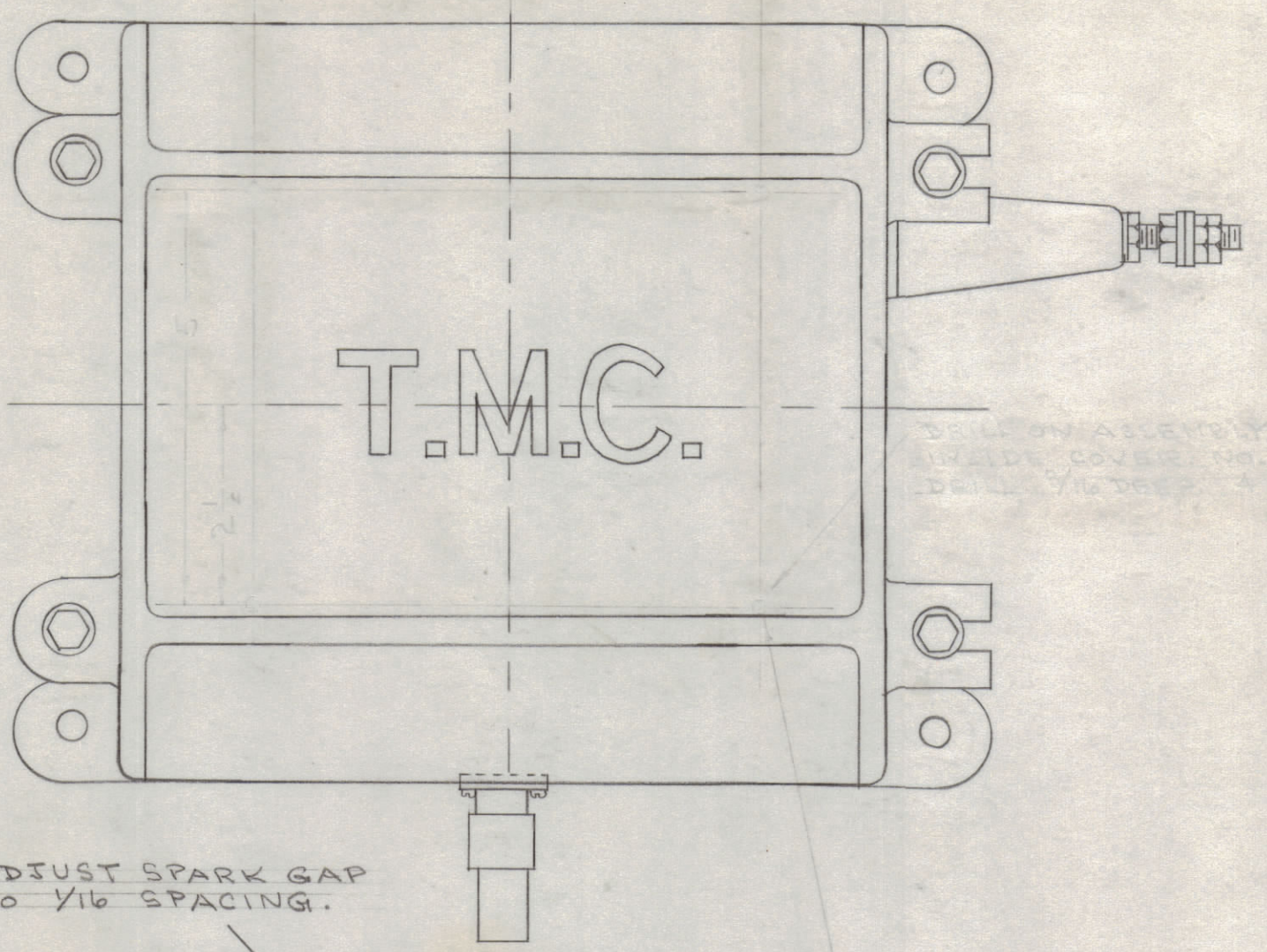


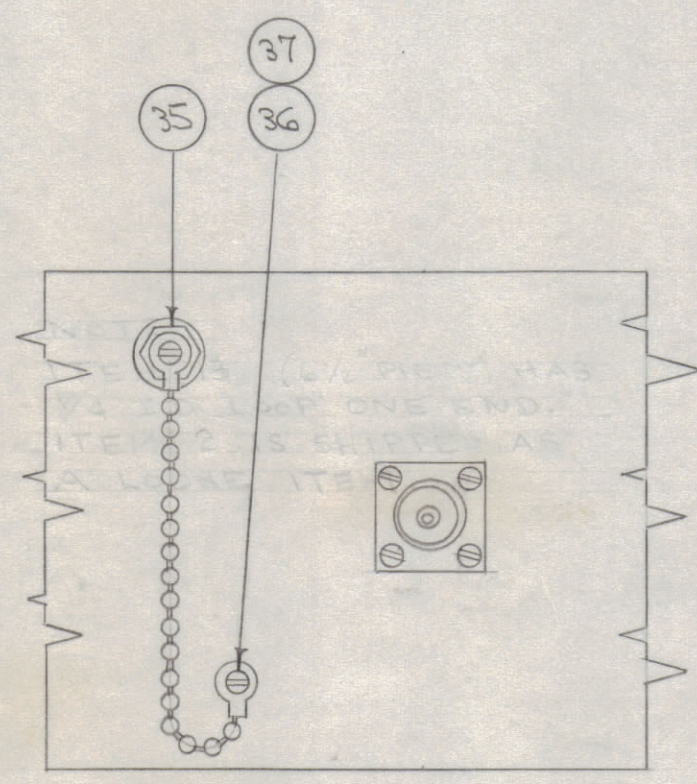
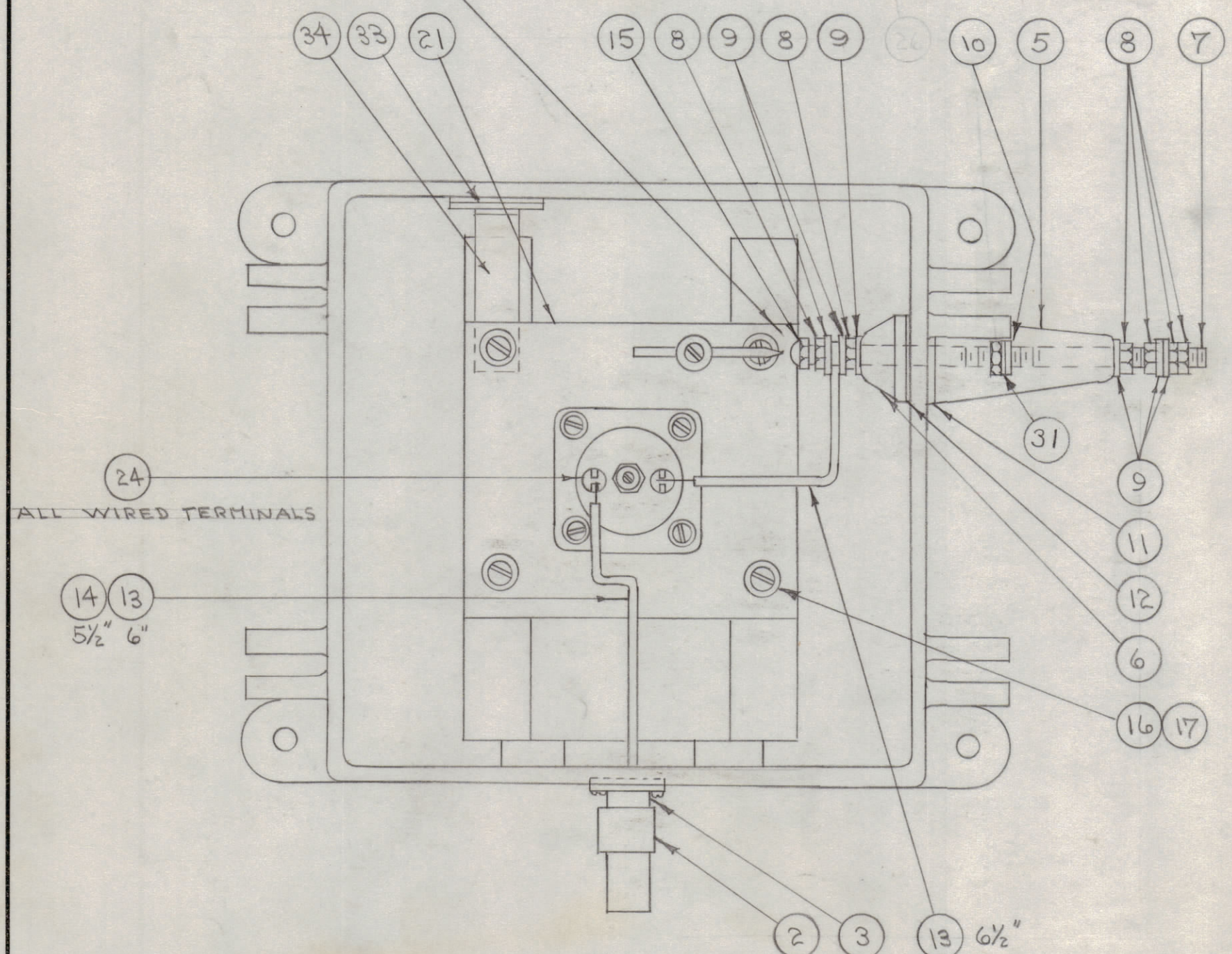
IF IT IS FOUND DESIRABLE TO CHANGE ANY TOLERANCE OR OTHER DETAIL SPECIFIED ON THIS DRAWING NOTIFY THE PURCHASER PROMPTLY.

MAXIMUM ALLOWABLE TOLERANCES HAVE BEEN DETERMINED AND DEVIATIONS WILL BE CAUSE FOR REJECTION. REMOVE ALL BURRS AND SHARP EDGES

NOTE - CEMENT ITEM 22 TO ITEM 23 WITH ITEM 30



1	37	LWE06MRC	WASHER, LOCK
1	36	SCBS0632BC3	SCREW, MACHINE
1	35	A-1291	DRAIN PLUG ASSY.
1	34	MS-933	HOLDER, DESSICANT
2	33	AD-101-1/6	DESSICANT
1	32	PX-115	GUARD
2	31	FW25LBC	WASHER, FLAT
X	30	GL-101-2	CEMENT, PLOIBOND
1	29	GA-106	GASKET
4	28	LWE04MRC	WASHER, LOCK
4	27	SCBS0440BN6	SCREW, MACHINE
4	26	SC-102-1	SCREW, THD. CUTTING
1	25	LD-108	SCHEMATIC DIAGRAM
X	24	BS-100	SOLDER, SOFT
1	23	PM-105	COVER
1	22	GA-103	COVER, GASKET



1	21	A-117	RESISTOR, SUB ASSY.
4	20	SC-100	BOLT, HEX
4	19	PM-100	PIN, COVER BOLT
-	18		DELETED
4	17	LWE08MRC	WASHER, LOCK
4	16	SCBS0832BC6	SCREW, MACHINE
1	15	NTC 2520BCL	NUT, CAP
11"	14	PX-100-1-.066	INSULATION, SLEEVING
12 1/2"	13	WL-100-4	WIRE, BUSS BAR
1	12	GA-101	GASKET
1	11	GA-100	GASKET
1	10	GA-104	GASKET
10	9	FW25MSC	WASHER, FLAT
6	8	NTH2520BNA	NUT, HEX
1	7	A-100	STUD, SUB ASSY.
1	6	NS-101	INSULATOR, INSIDE
1	5	NS-100	INSULATOR, OUTSIDE
-	4		DELETED
1	3	SO-239	RECEPTACLE
1	2	PL-259-A	PLUG
1	1	PM-112	CASE

D	1	ITEMS 32 THRU 37 ADDED	7/13/52	4	CDD	JLD	
C	2	#31 WAS ADDED	8-24-52	3	F.M.	CDD	JLD
	1	WL-100-4 WAS WL-100-3					
		REDRAWN - NO CHANGE	4/1/53		CDD	JLD	
ISSUE	ITEM	CHANGED FROM	DATE	CN. NO.	DRAFTS	CHECKER	ENG. APP.
TOLERANCES		SCALE: #					
ALL OTHERS	DEC. DIM. ± FRAC. DIM. ± ANGULAR DIM. ±	DRILL, PUNCH, COMMERCIAL STOCK SIZES AND MANUFACTURERS TOLERANCES ARE NOT INCLUDED.					

BAC-A-S-500	153		9-5-52
MODEL	PROJECT NO.	ASS'Y. NO.	DATE
USED ON			

REQ. ITEM	PART NO.	DESCRIPTION	SYMBOL
THE TECHNICAL MATERIEL CORP. MAMARONECK, NEW YORK			
STOCK SIZE			
CASE & COVER			
MATERIAL WEIGHT PER PC. ASSEMBLY			
TYPE & TEMPER C.D.D. A-7-53			
DRAWN		ELEC. DES. APP.	MECH. DES. APP.
HEAT TREAT. SPEC.		CHECKED	FINAL APPROVAL
		A-233 D	
FINISH & SPEC. NO.			

A-233 D