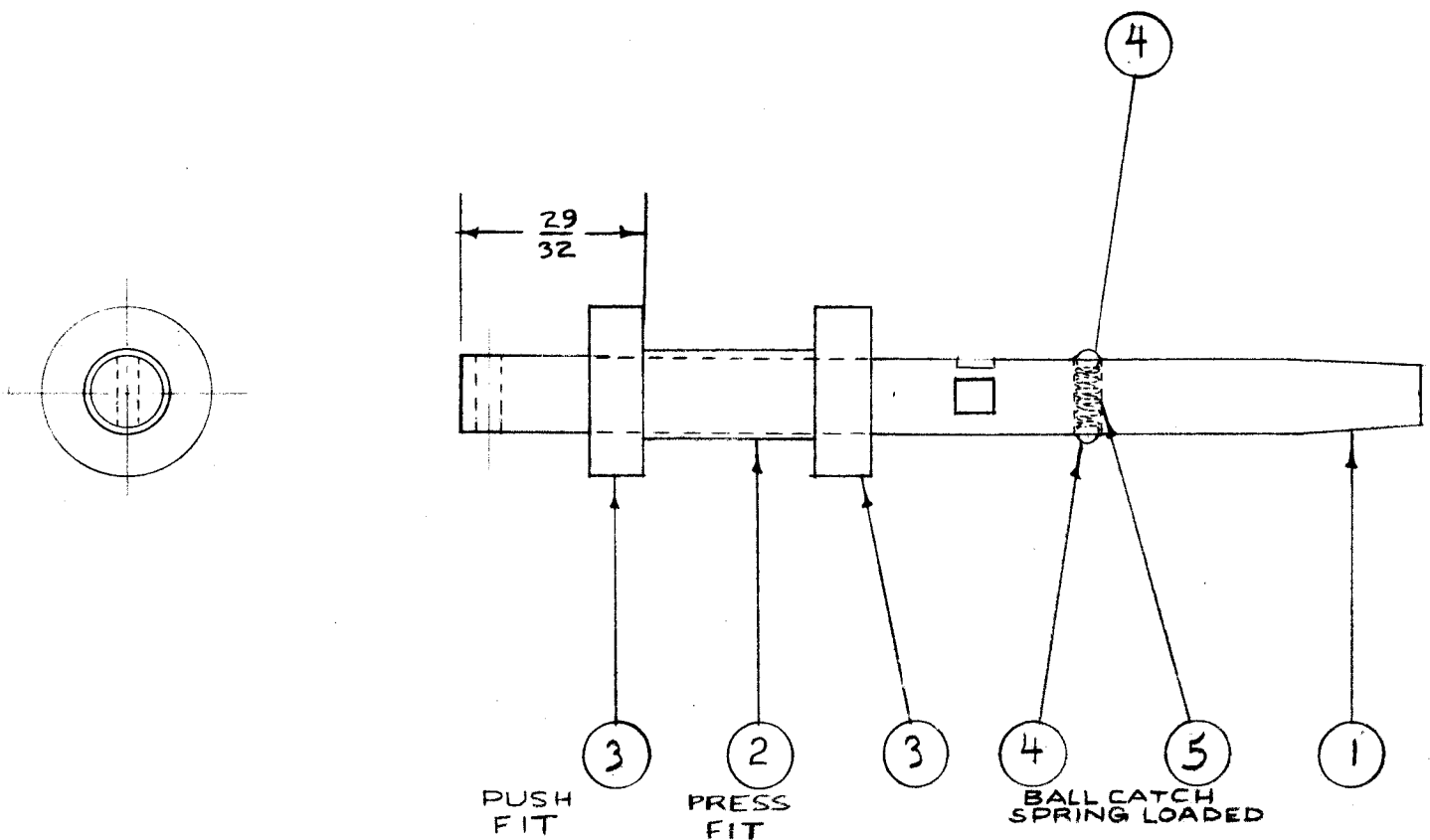


IF IT IS FOUND DESIRABLE TO CHANGE ANY TOLERANCE OR OTHER DETAIL SPECIFIED ON THIS DRAWING NOTIFY THE PURCHASER PROMPTLY.

MAXIMUM ALLOWABLE TOLERANCES HAVE BEEN DETERMINED AND DEVIATIONS WILL BE CAUSE FOR REJECTION. REMOVE ALL BURRS AND SHARP EDGES

A-215



1	5	SP-104	SPRING	
2	4	BB-103-1	BALL BEARING	
2	3	BB-102	BEARING	
1	2	PM-140	BEARING SPACER	
1	1	PM-139	GEAR SHAFT	
REQ.	ITEM	PART NO.	DESCRIPTION	SYMBOL
ff			THE TECHNICAL MATERIEL CORP.	
STOCK SIZE			MAMARONECK. NEW YORK	
ff ff			GEAR SHAFT	
MATERIAL WEIGHT PER PC.			ASS'Y.	
ff			16 10-21-52	PPB
TYPE & TEMPER			DRAWN	ELEC. DES. APP. MECH. DES. APP.
ff			JAR 11/6/52	PPB
HEAT TREAT. SPEC.			CHECKED	FINAL APPROVAL
ff			A-215	
FINISH & SPEC. NO.				

ISSUE	ITEM	CHANGED FROM	DATE	CN. NO.	DRAFTS	CHECKER	ENG. APP.
TOLERANCES		SCALE: FULL SIZE					
ALL OTHERS	DEC. DIM. ± FRAC. DIM. ± ANGULAR DIM. ±	DRILL, PUNCH, COMMERCIAL STOCK SIZES AND MANUFACTURERS TOLERANCES ARE NOT INCLUDED.					

TWR-115	151	A-218	10-21-52
MODEL	PROJECT NO.	ASS'Y. NO.	DATE
USED ON			