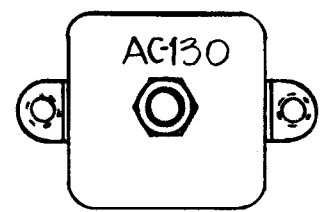
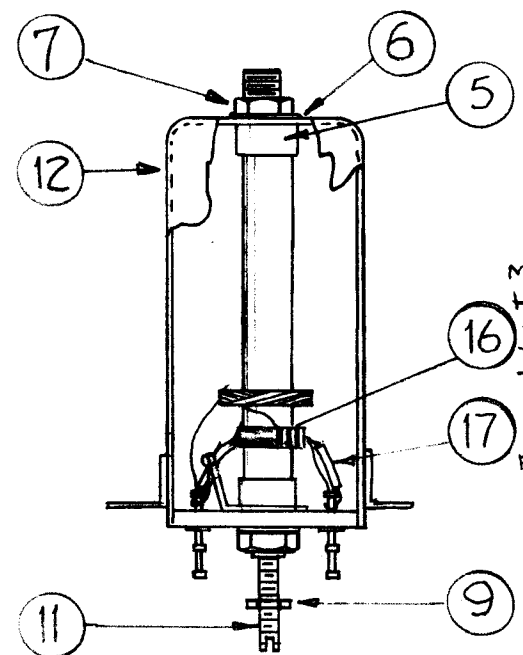


A-1968 D

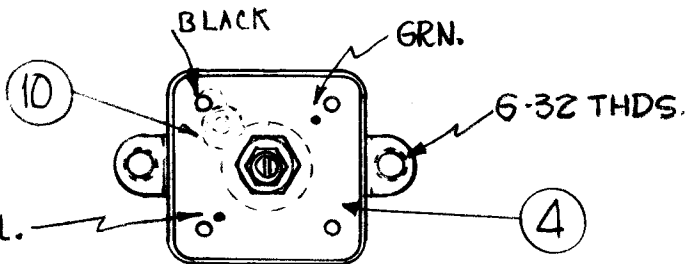
STAMP CAN AS SHOWN 1/8 HIGH BLACK GOTHIC. NOTE - STAMP TMC INSIGNIA & APPROVAL ON SIDE OF CAN.



CEMENT COIL FORM TO BUSHING WITH GL-103.



MOUNT HORIZONTALLY DIRECTLY TO TERM. BD. TERMINALS.  
FOR IT.16 LEADS.



COLOR CODE TERMINAL BOARD AS SHOWN.

D		IT 16 WAS RC20GF104K	9.27.66	116902	WHD	JCB	
C	3	WINDING DATA PICT. UPDATED					
	2	IT.18 PX-104-2-.022 DELE	9.3.64	12182	hob	@	
	1	IT.15 WL-100-B IT.15 TE-1531 DEL					
B	3	ITEM 14, WAS WI-106-17, #36 DSC	12/21/60	3790	Ru	Yde	Jc
	2	ITEM 11, WAS CI-116-6					
	1	ITEM 1, WAS CF-122-2.0					
A	1	ITEM 9 QUAN WAS 2	11-8-60	3423	WFF	JCB	J

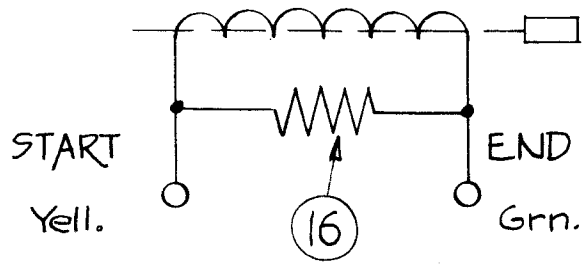
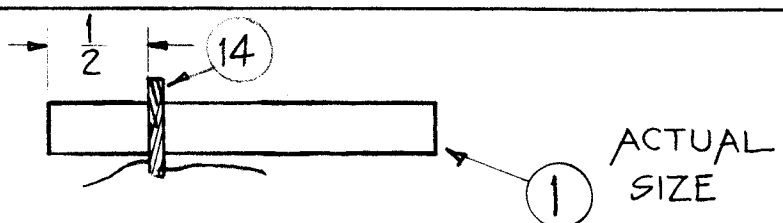
TOLERANCES		SCALE:	
DEC. DIM. ±		MAXIMUM ALLOWABLE TOLERANCES HAVE BEEN DETERMINED AND ANY DEVIATIONS WILL BE CAUSE FOR REJECTION. REMOVE ALL BURRS AND SHARP EDGES	
FRAC. DIM. ±			
ANGULAR DIM. ±			

WINDING MACHINE DATA

Cam Gear 49  
Driver Gear 95  
Cam .125

WINDING DATA

1. Start winding 1/2" from end of form.
2. End winding at 50 turns.
3. Keep all leads approximately 2" long.
4. Stake leads to coil form with item 2.
5. Bake unit for 1/2 hour at 215° F.
6. Coat windings and ring terminals with item 3.
7. Bake hard for 1/2 hour at 215° F.
8. Test as shown in test data.
9. Assemble as shown.



TEST DATA (W/OUT CORE)

L = 22 uh (+1)  
Q = 30 or Greater  
Freq = 2.5 mc

USE BOONTON RADIO CORPORATION Q METER MODEL 160 A OR EQUIVALENT.

	18	DELETED		
X	17	PX-104-4-.022	Sleeving, Insulation	Green
1	16	RC20GF104J	Resistor, Fixed	
	15	DELETED		
X	14	WI-107-17	Wire, Magnet #36 DSB	
	13	DELETED		
1	12	A-1950-1	Can, Assembly	
1	11	CI-116-5	Core Tuning	Red
1	10	TE-104-3	Lug	
1	9	NTH0348BN6	Nut, Hex	
X	8	BS-100	Solder, Soft	
2	7	NTH0832BN8	Nut, Hex	
2	6	LWI08MRN	Lockwasher, Int.	
2	5	SM-140-2	Bushing, Coil Mtg.	
1	4	PX-585-1	Terminal Board,	
X	3	GL-104-2	Insulex, U85	
X	2	GL-103	Cement, Duco	
1	1	CF-122-1.93	Coil Form .250 O.D.	

REQ. ITEM	PART NO.	DESCRIPTION	SYMBOL
<b>THE TECHNICAL MATERIEL CORP.</b> MAMARONECK. NEW YORK			
<b>AC-130, COIL ASSEMBLY</b>			
MATERIAL			
STOCK SIZE			
TYPE & TEMPER		HEAT TREAT. SPEC.	DRAWN
FINISH & SPEC. NO.		ELEC. DES. APP.	MECH. DES. APP.
		ATT	FINAL APPROVAL
		A-1968 D	

1	CHG-1	MF/RF		9-13-60
REQ PER UNIT	MODEL	PROJECT NO.	ASS'Y. NO.	DATE
USED ON				