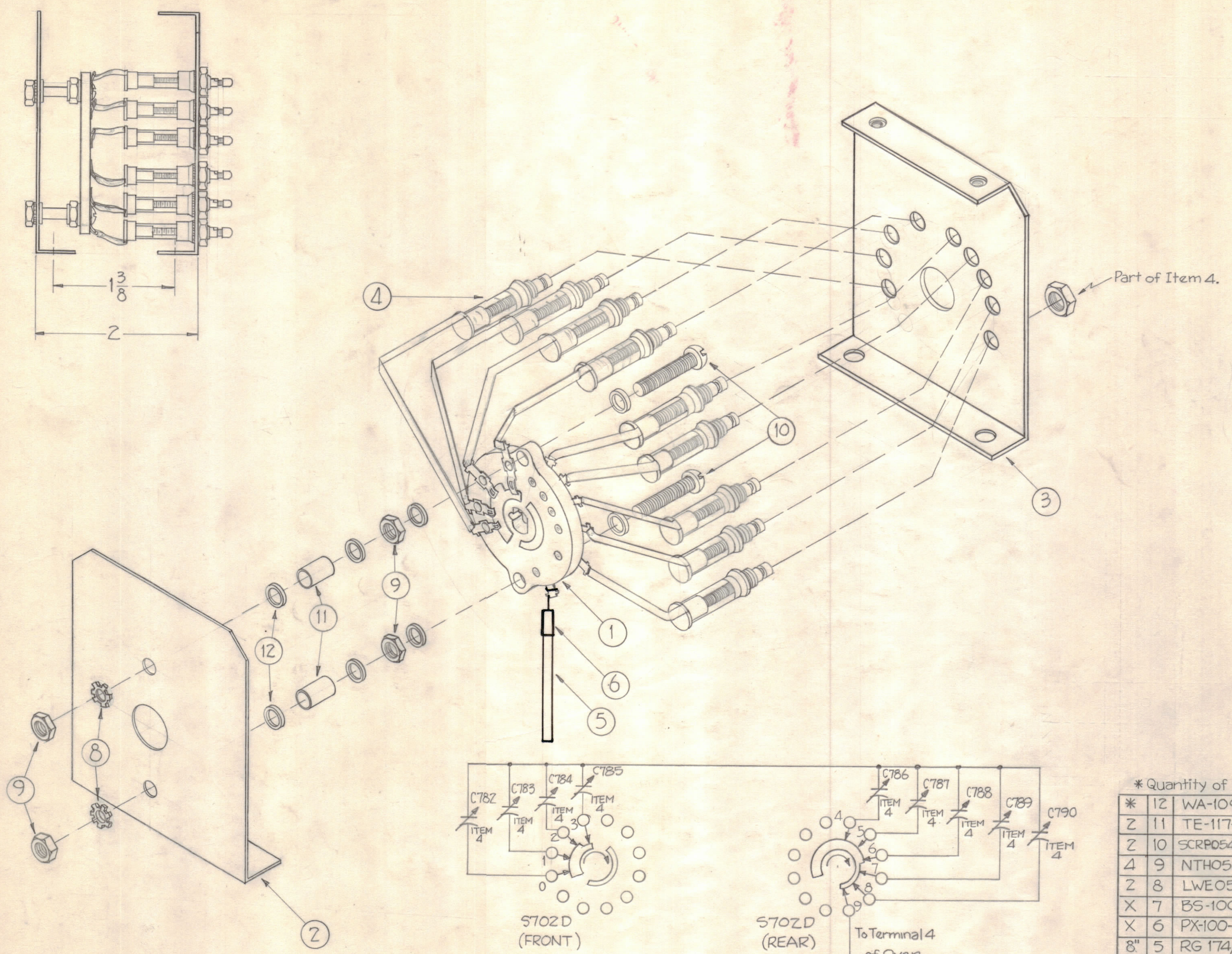


NOTICE TO PERSONS RECEIVING THIS DRAWING
 THE TECHNICAL MATERIEL CORPORATION claims proprietary right in the material disclosed hereon. This drawing is issued in confidence for engineering information only and may not be reproduced or used to manufacture anything shown hereon without permission from THE TECHNICAL MATERIEL CORPORATION to the user. This drawing is loaned for mutual assistance and is subject to recall at any time.

Property of:
 THE TECHNICAL MATERIEL CORPORATION
 MAMARONECK, NEW YORK



* Quantity of Item 12 to be determined upon Assembly.

REQ. ITEM	PART NO.	DESCRIPTION	SYMBOL
* 12	WA-109-26	Washer, Fiber	
Z 11	TE-117-30	Spacer, 5/16" Lg.	
Z 10	SCRPO540BN15	Screw, Machine	
4 9	NTH0540BN10	Nut, Hex.	
Z 8	LWE05MRN	Lockwasher, Ext.	
X 7	BS-100	Solder, Soft	
X 6	PX-100-1-118	Sleeving, Size 9	Black
8" 5	RG 174/U	Wire	Black
9 4	CV-101-2	Capacitor, Variable, Ceramic 0.5-3mmfd	C782 to C790
1 3	LD-749/MS2219	LETTERING BRKT, RIGHT, CAP. MTG.	
1 2	MS-2222	Bracket, Switch Mounting	
1 1	WS-110	Wafer, Switch Rotary	5702D

C	ITEM 10 P/N WAS SCRPO540BN14	8/31/72	20864	GE	CL	CL
B	ADD 5702D TO IT.1. ADD /MS2219 TO IT.3 - DELE DECIMAL FROM IT.6 - IT.10 CHGD. P/N FR "SCRS" TO "SCRP"	10-15-60	3222	R M E	82	8
A	B2 ITEM 3 WAS MS-2219	10-15-60	3222	MS	MS	S.S.

1	CLL-1			9-28-60
REQ PER UNIT	MODEL	SECTION	ASSY. NO.	DATE

THE TECHNICAL MATERIEL CORP.
 MAMARONECK, NEW YORK

SWITCH, ASSEMBLY
 5702/D

TYPE & TEMPER

HEAT TREAT. SPEC.

FINISH & SPEC. NO.

DRAWN: [Signature] ELEC. DES. APP: [Signature] MECH. DES. APP: [Signature]

CHECKED: [Signature] FINAL APPROVAL: [Signature]

A-1963 C