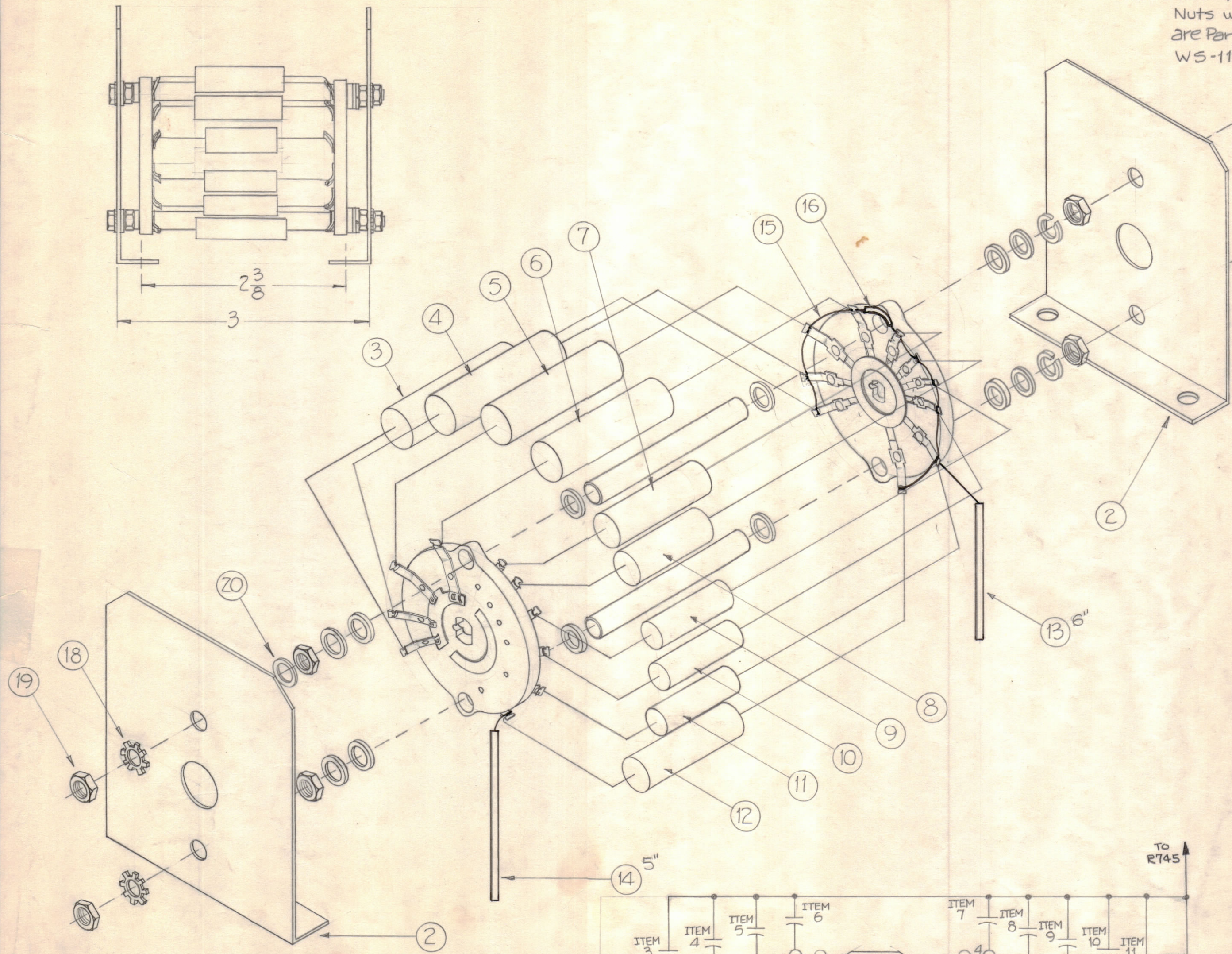


Note: Wafer, Spacers, Rods, Washers & Nuts which are not itemized are Part of Item 1, WS-112.

NOTICE TO PERSONS RECEIVING THIS DRAWING

THE TECHNICAL MATERIEL CORPORATION claims proprietary right in the material disclosed hereon. This drawing is issued in confidence for engineering information only and may not be reproduced or used to manufacture anything shown hereon without permission from THE TECHNICAL MATERIEL CORPORATION to the user. This drawing is loaned for mutual assistance and is subject to recall at any time.

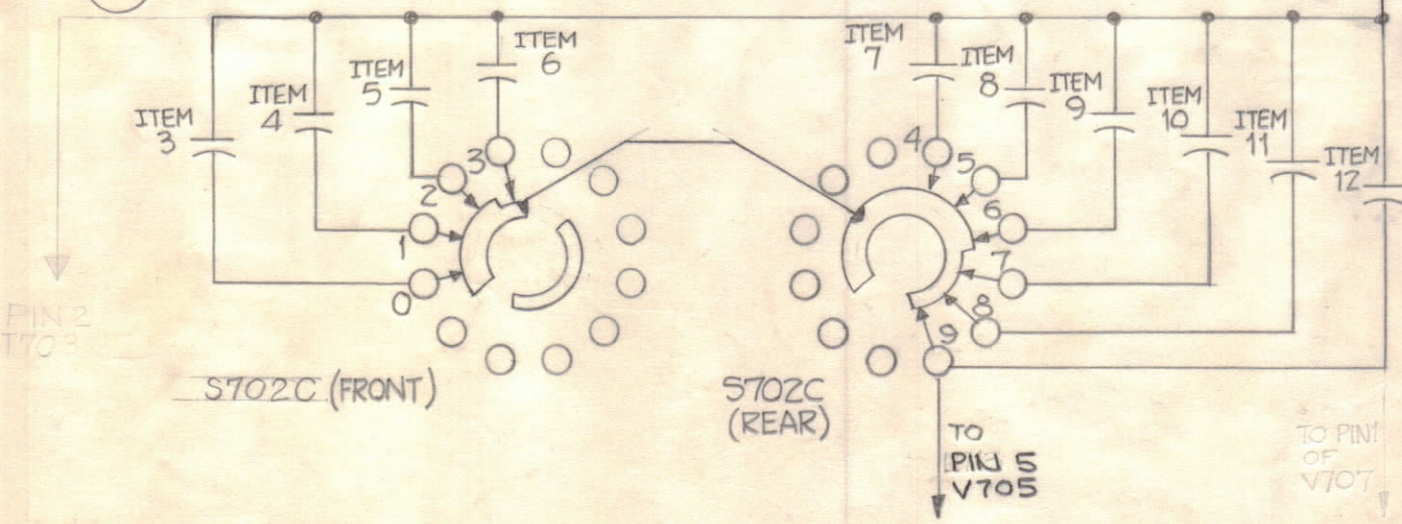
Property of:
THE TECHNICAL MATERIEL CORPORATION
MAMARONECK, NEW YORK



* Quantity of Item 20 to be determined Upon Assembly.

*	20	WA-109-26	Washer, Fiber 1/4" O.D.		
	4	NTH0540BN10	Nut, Hex.		
	4	LWEO5MRN	Ext., Lockwasher		
	X	BS-100	Solder, Soft		
	X	PX-104-7-034	Sleaving		Grey
	X	WL-100-7	Wire, Buss-Bar #22		
	5"	MWC22(7)5J6	Cable, Insulated		Blue
	6"	MWC22(7)U92	Cable, Insulated		Red/wh.
	1	CX-104-22	Capacitor, Fixed, .117 ufd		C805
	1	↑	↑	↑	.0133 ufd C804
	1	10	-20		.0158 ufd C803
	1	9	-19		.0186 ufd C802
	1	8	-18		.0230 ufd C801
	1	7	-17		.0277 ufd C800
	1	6	-16		.0344 ufd C799
	1	5	-15		.0434 ufd C798
	1	4	↓ -14		.0555 ufd C797
	1	3	CX-104-13	Capacitor, Fixed, .0735 ufd	C796
	2	MS-2222	Bracket, Switch Mounting		
	1	1	WS-112	Wafer Assembly	

REQ. ITEM	PART NO.	DESCRIPTION	SYMBOL
THE TECHNICAL MATERIEL CORP. MAMARONECK, NEW YORK			
STOCK SIZE			
MATERIAL			
TYPE & TEMPER			
HEAT TREAT. SPEC.			
FINISH & SPEC. NO.			



C	ITEM 13 WAS 9" ITEM 14 WAS 9"	5-5-66	16214	WJW		
B	# SCHEMATIC & B/M SYMBOLS REVISED	7-16-64	11874			
A	C5 PIN 2 & CONNECTING LINE BET. ROTORS ADDED, S702C WAS S702 (FRONT)	5/5/64	11363	A.M.		

1	CLL-1			9-10-60
REQ PER UNIT	MODEL	SECTION	ASSY. NO.	DATE