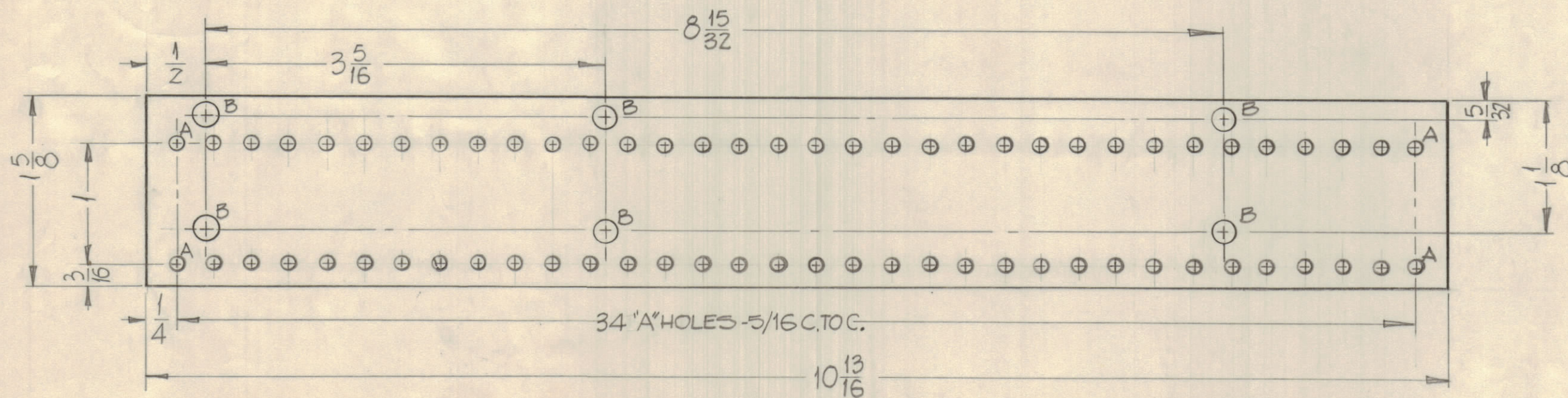
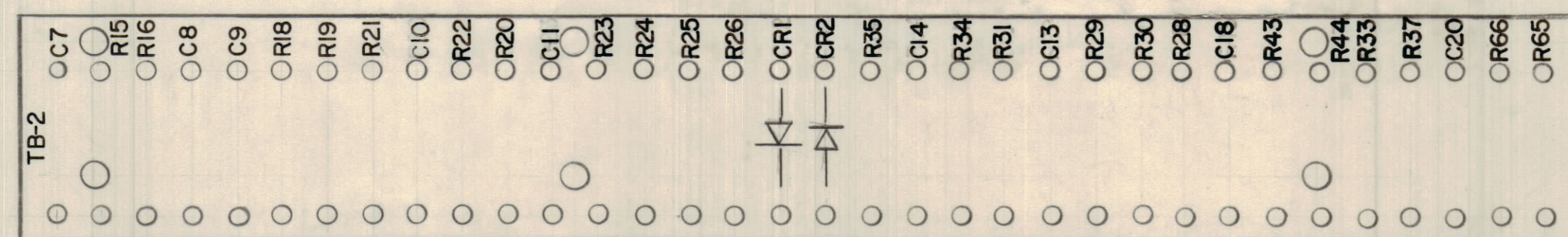


HOLES REQ.
 A~.116 D. 68
 B~.189 D. 6

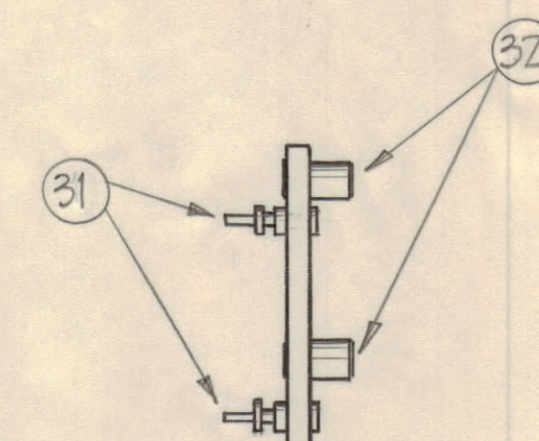


MACHINING ~ (A-1945-1) ~ MATERIAL: PHENOLIC XXXP, 1/8" THK.; FINISH: NATURAL

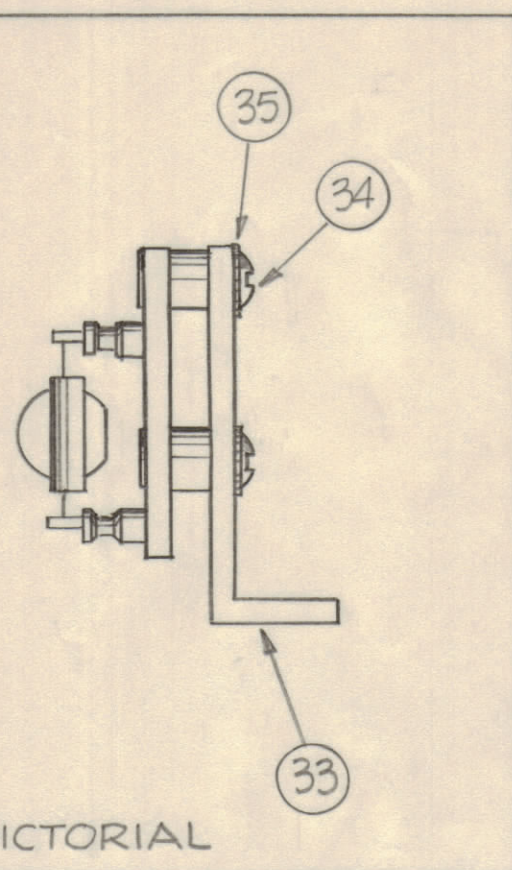


NOTE ~ ALL LETTERING 1/8" BLACK GOTHIC

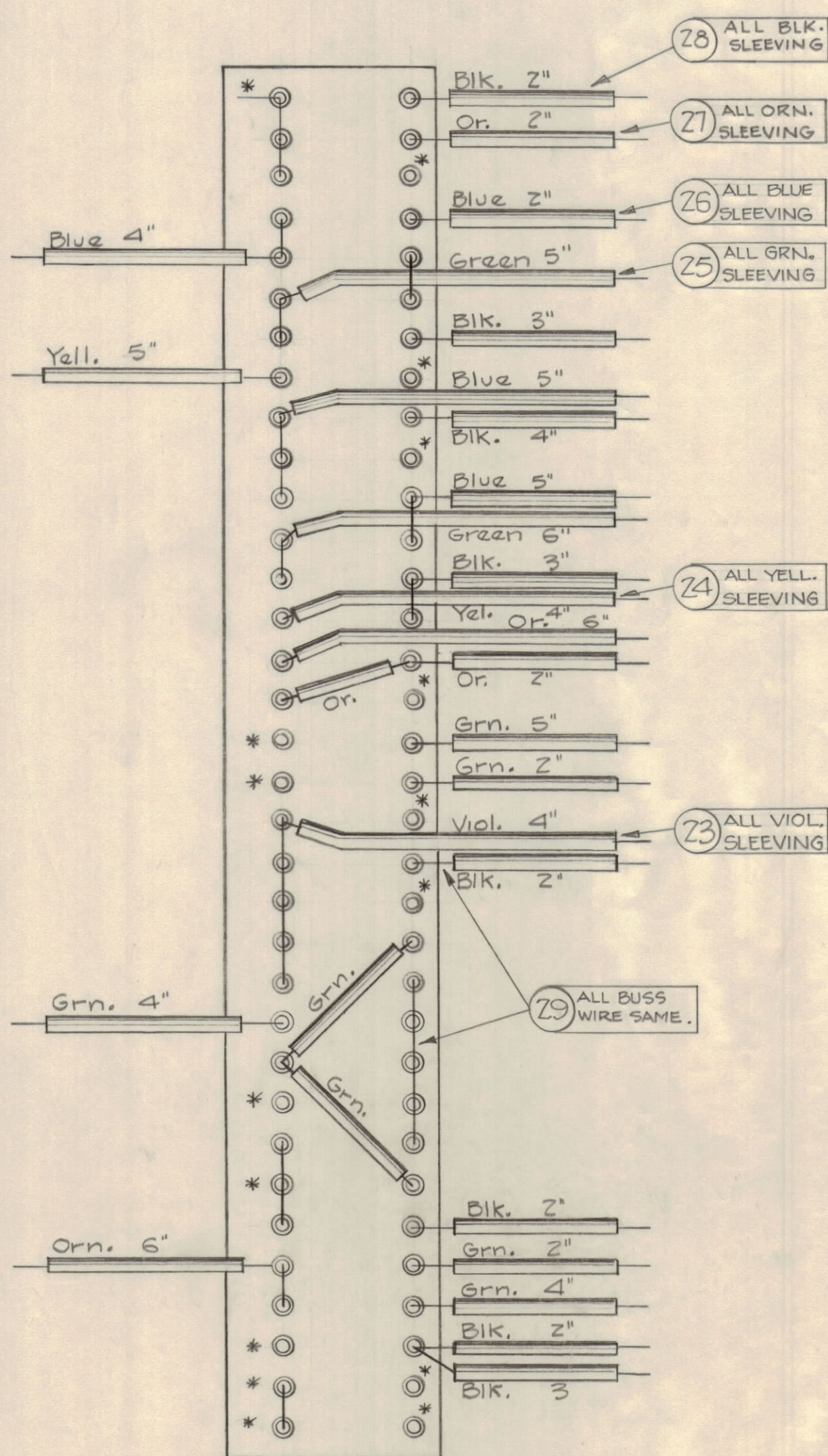
STAMPING ~ (A-1945-2)



SUB-ASSEMBLY (A-1945-3)



ASSEMBLY PICTORIAL



WIRING (A-1945-4) REAR

NOTES ~
 * DO NOT SOLDER THESE CONNECTIONS.
 ALL LENGTHS INDICATED ARE INSULATED SLEEVING LENGTHS. ALL BUSS WIRE WILL BE 1" LONGER.

REQ. ITEM	PART NO.	DESCRIPTION	SYMBOL
6 35	LWE06MRC	LOCKWASHER, EXTERIOR	
6 34	SCB50632BC6	SCREW, MACHINE	
3 33	MS-1321	BRACKET, ANGLE TYPE	
68 32	TE-109-3	TERMINAL LUG	
6 31	TE-108-8	STANDOFF, RIVET TYPE	
1 30	RC20GF474K	RESISTOR, FIXED COMP	R18
X 29	WL-100-7	WIRE, BUSS-BAR	
X 28	PX-104-1-.034	INSULATION, SLEEVING	Black
X 27	8		Orange
X 26	6		Blue
X 25	4		Green
X 24	2		Yellow
X 23	PX-104-9-.034	INSULATION, SLEEVING	Violet
1 22	CC-100-9	CAPACITOR, DISC	C9
1 21	CC-100-3	CAPACITOR, DISC	C8
2 20	CN-106-C104K	CAPACITOR, FIXED MYLAR	C7, C10
2 19	CP106C474-2	, FIXED MYLAR	C14, C20
2 18	CC-100-16	, DISC	C13, C11
1 17	CM20E132G	CAPACITOR, MICA	C18
2 16	1N-100	DIODE, GERMANIUM	CR1, CR2
1 15	RC326F222K	RESISTOR, FIXED, COMPOSITION	R26
1 14	RC20GF682K		R16
1 13	333K		R19
1 12	334K		R21
1 11	124K		R22
1 10	562K		R20
1 9	104K		R23
1 8	151K		R24
2 7	101K		R25, R15
1 6	331K		R34
2 5	224K		R30, R29
2 4	223K		R28, R44
1 3	103K		R31
2 2	102K		R33, R37
4 1	RC20GF105K	RESISTOR, FIXED, COMPOSITION	R25, R56, R43, R35

A-1945 A

REV	DESCRIPTION	DATE	CH. NO.	DRAFTS	CHECKER	ENG. APP.
C2	ITEM 19 WAS CP-106-2					
R1	SYMBOL R44 WAS RC20GF105K					
B1	SYMBOL R31 WAS RC20GF222K					
C1	ITEM #20 WAS CN106-C10033					
C3	ITEM #15 WAS RC306F222K					
D2	ITEM #20 WAS RC20GF333K					

FORM-111

1	AFC-1			8-12-60
REQ PER UNIT	MODEL	SECTION	ASBY. NO.	DATE
USED ON				

THE TECHNICAL MATERIEL CORP. MAMARONECK, NEW YORK			
TERMINAL BOARD, ASS'Y, NO 2			
TYPE & TEMPER	DRAWN	ELEC. DES. APP.	MECH. DES. APP.
HEAT TREAT. SPEC.	CHECKED	FINAL APPROVAL	
FINISH & SPEC. NO.		A-1945 A	