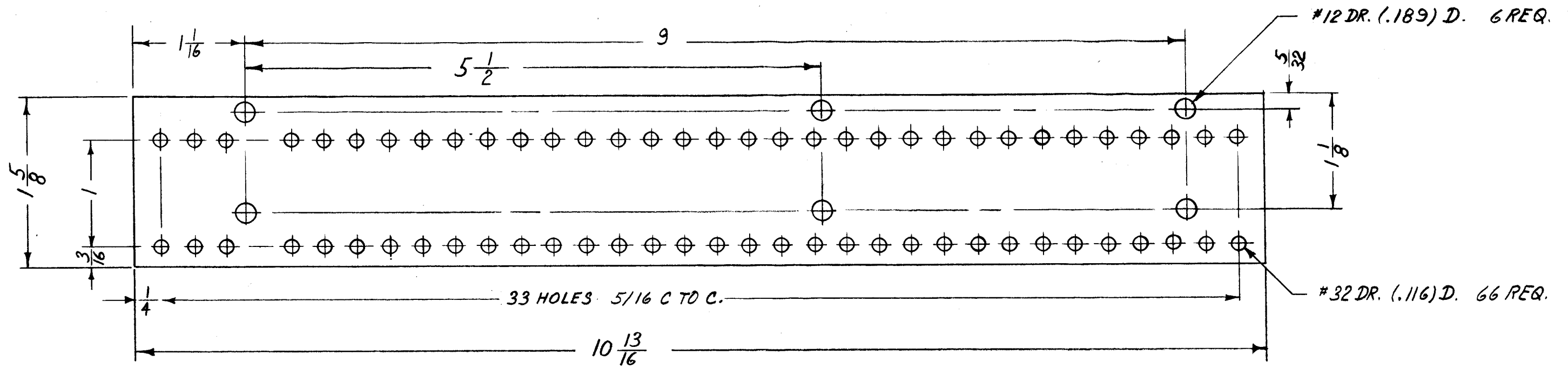
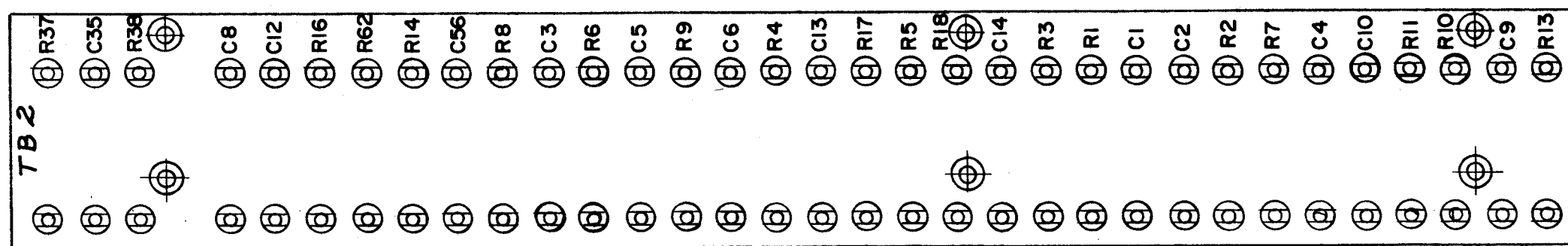


A-1924



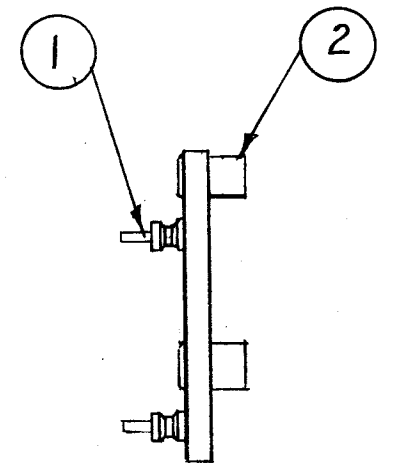
MACHINING:
A-1924

MAT:
1/8 NATURAL PHENOLIC XXXP



MARKING PROCESS: AS PER TMC SPECIFICATION S-727.

STAMPING TO BE 1/8 HIGH BLACK GOTHIC.



ISSUE ITEM	CHANGED FROM	DATE	CH. NO.	DRAFTS	CHECKER	ENG. APP.
TOLERANCES						
DEC. DIM. ±		SCALE: FULL				
FRAC. DIM. ± 1/64		MAXIMUM ALLOWABLE TOLERANCES HAVE BEEN DETERMINED AND ANY DEVIATIONS WILL BE CAUSE FOR REJECTION.				
ANGULAR DIM. ±		REMOVE ALL BURRS AND SHARP EDGES				

1	MSR-5	A-1925	6-24-60
REQ. PER UNIT	MODEL	PROJECT NO.	ASS'Y. NO.
USED ON			

6	2	TE-108-8	STANDOFF, RIVET TYPE
66	1	TE-109-3	TERMINAL LUG
REQ. ITEM	PART NO.		DESCRIPTION
1/8			SYMBOL
STOCK SIZE			THE TECHNICAL MATERIEL CORP. MAMARONECK, NEW YORK
PHENOLIC			
MATERIAL			
XXXP		TYPE & TEMPER	HEAT TREAT. SPEC.
DRAWN		CHECKED	
ELEC. DES. APP.		MECH. DES. APP.	
FINISH & SPEC. NO.			FINAL APPROVAL
			A-1924