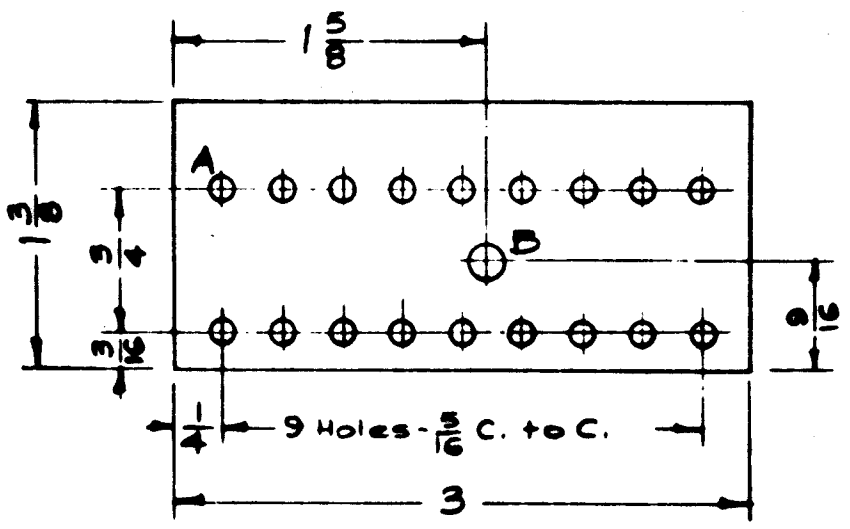
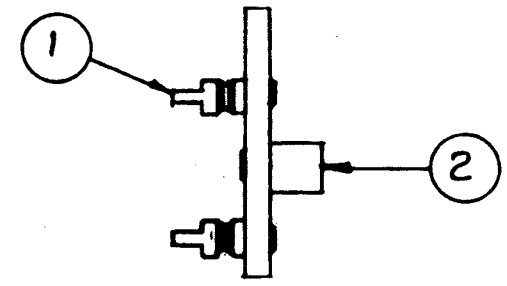


A-1923 C

A - No. 32 Dr. (.116) Diam. - 18 Req.
 B - No. 12 Dr. (.189) Diam. - 1 Req.

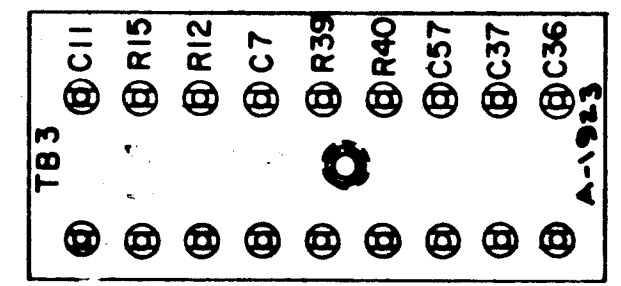


STAGE 1 (MACHINING)

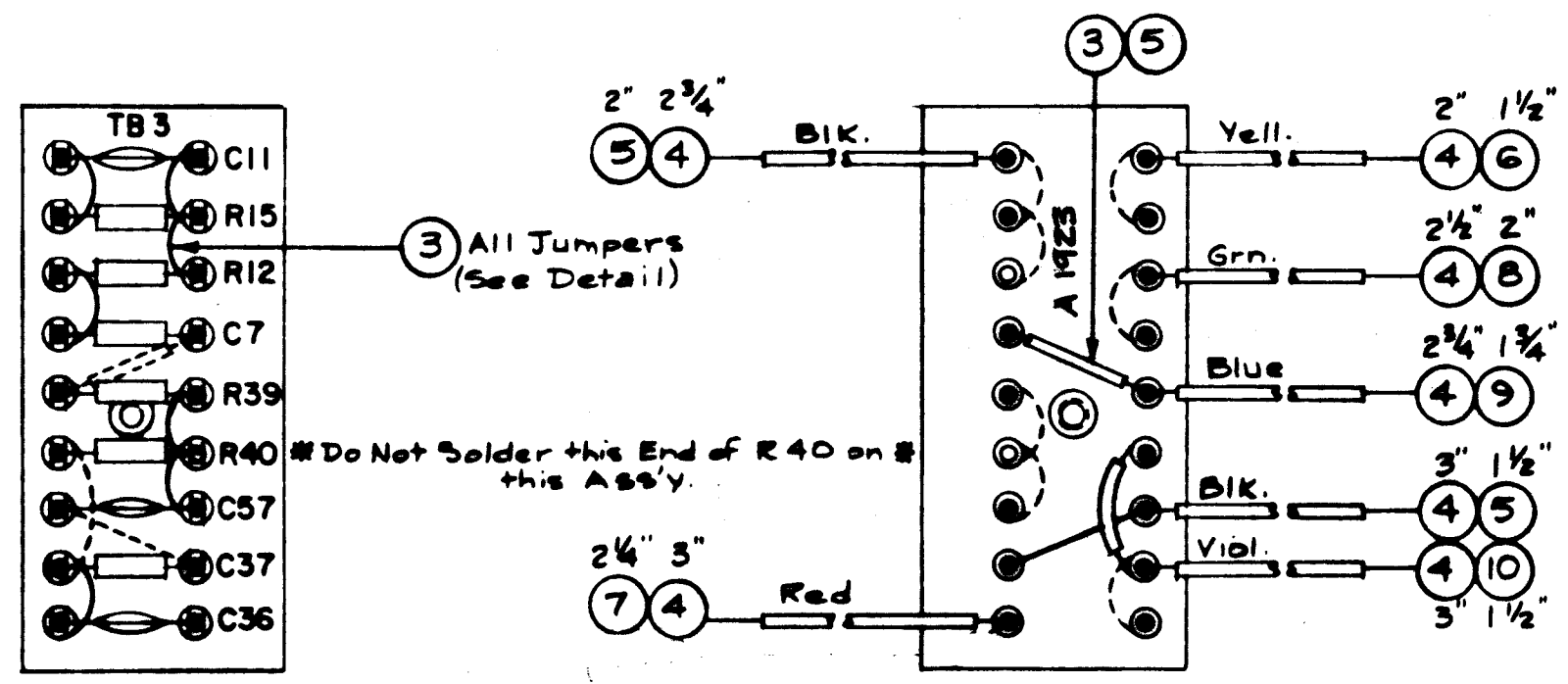
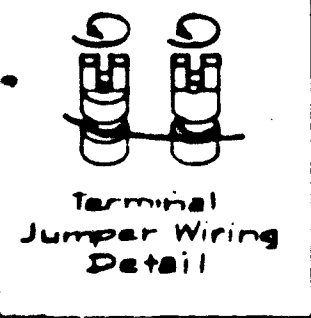


STAGE 2 (MECHANICAL ASS'Y)

MARKING PROCESS: AS PER TMC SPECIFICATION S-727
 Stamp as shown, 1/8" high black Gothic



STAGE 3 (STAMPING)



STAGE 4 (ELECTRICAL ASS'Y.)

QTY	ITEM	PART NO.	DESCRIPTION	SYMBOL
X	17	BS-100	Solder, Soft	
2	16	RC20GF593K	Resistor, Fixed, Comp.	R39
1	15	RC20GF221K	Resistor, Fixed, Comp.	R15
1	14	RC20GF223K	Resistor, Fixed, Comp.	R12
1	13	CM15F101G	Capacitor, Fixed, Ceramic	C37
3	12	CC-100-16	" " "	C57, C7
1	11	CC215L470K	" " "	C7
1 1/2	10	PX-104-9-.034	Insulation, Sleeving (Size 20)	Violet
1 1/2	9	PX-104-6-.034	" " "	Blue
2	8	PX-104-4-.034	" " "	Green
2 1/2	7	PX-104-5-.034	" " "	Red
1 1/2	6	PX-104-2-.034	" " "	Yellow
4	5	PX-104-1-.034	Insulation, Sleeving (Size 20)	Black
X	4	WL-100-7	Wire, Buss (Size 22)	
X	3	WL-100-8	Wire, Buss (Size 24)	
1	2	TE-108-3	Standoff, Rivet Type	
18	1	TE-109-3	Terminal Lug	

REV	ITEM	CHANGED FROM	DATE	CH. NO.	DRAFTS	CHECKER	ENG. APP.
C	1	IT.13 WAS CM15C151K	9.24.64	12416	Job		
B	1	Item 3 Was CM15C300J	5-6-62	6471	LS		
A	1	CM15B300J was CM15B680G	10/4/60	3122	JDM		

TOLERANCES: DEC. DIM. ± 1/64, FRAC DIM ± 1/64, ANGULAR DIM ±

SCALE: FULL

MAXIMUM ALLOWABLE TOLERANCES HAVE BEEN DETERMINED AND ANY DEVIATIONS WILL BE CAUSE FOR REJECTION. REMOVE ALL BURRS AND SHARP EDGES

1 PER UNIT

MODEL: MSR-5

PROJECT NO.:

ASSY. NO.:

DATE: 6-24-60

USED ON:

REQ. ITEM	PART NO.	DESCRIPTION	SYMBOL
1/8 THK.		THE TECHNICAL MATERIEL CORP. MAMARONECK, NEW YORK	
STOCK SIZE		TERMINAL BOARD NO. 3	
Phenolic		(All Stages)	
MATERIAL			
XXXXP Laminata		WF	J. LANGER
TYPE & TEMPER		DRAWN	CHECKED
HEAT TREAT. SPEC.		FINAL APPROVAL	
Natural			
FINISH & SPEC. NO.		A-1923 C	
ELEC. DES. APP.		MECH. DES. APP.	