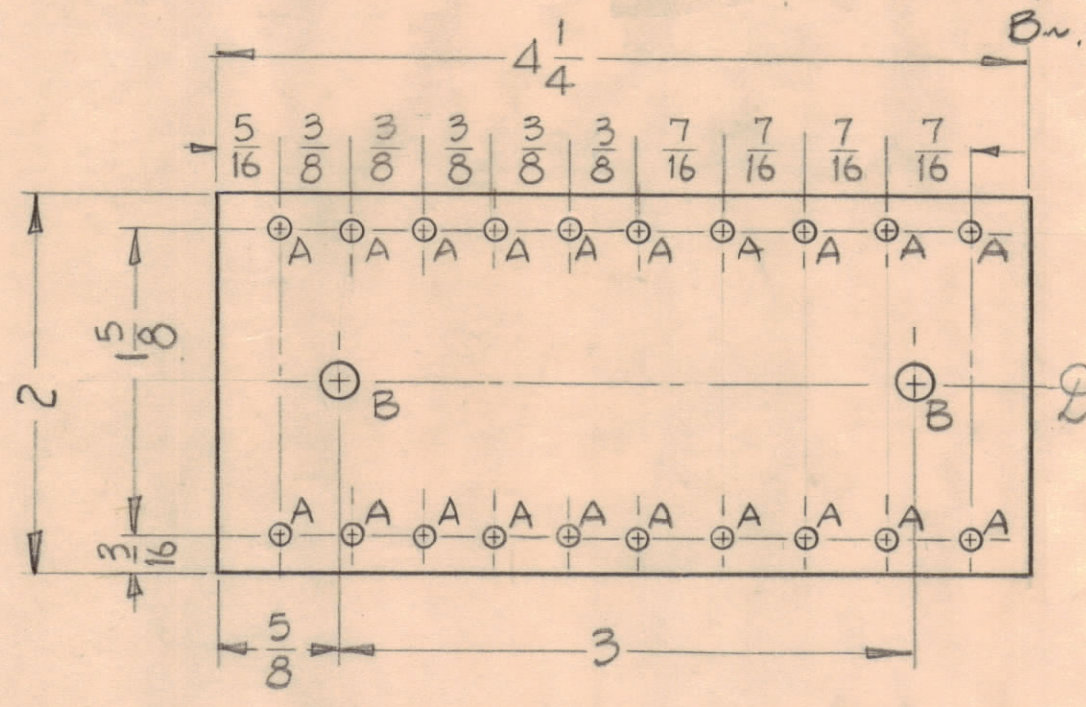
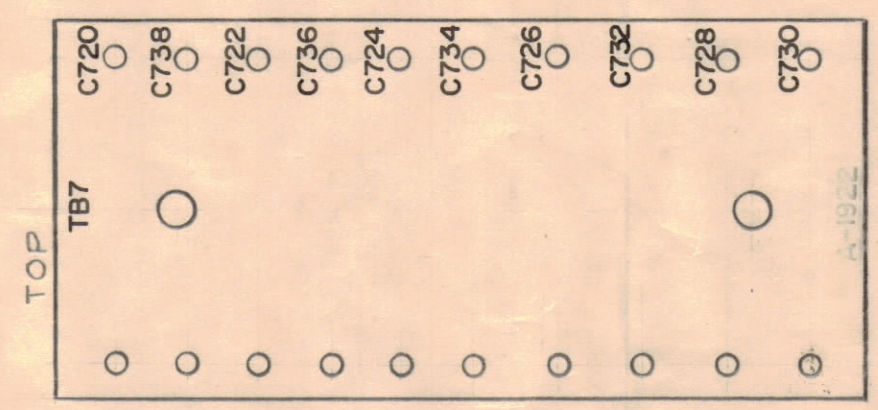


HOLES
A ~ .116 DIA.
B ~ .189 "

REQ.
20
2

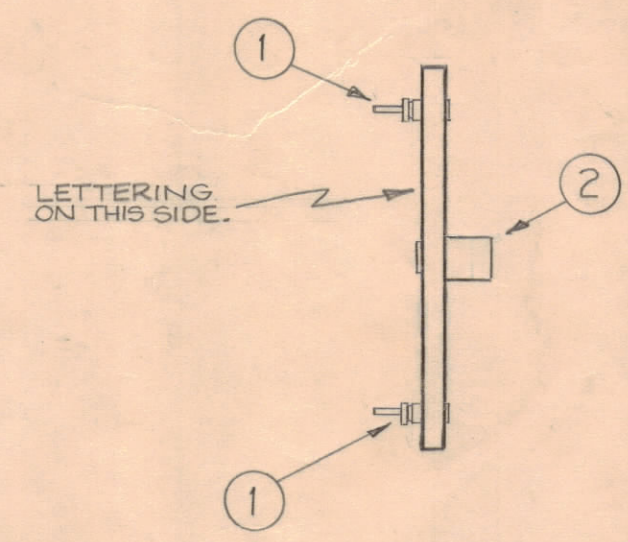


MACHINING (A-1922-1)
MATERIAL-XXXXP PHENOLIC 1/8" NATURAL



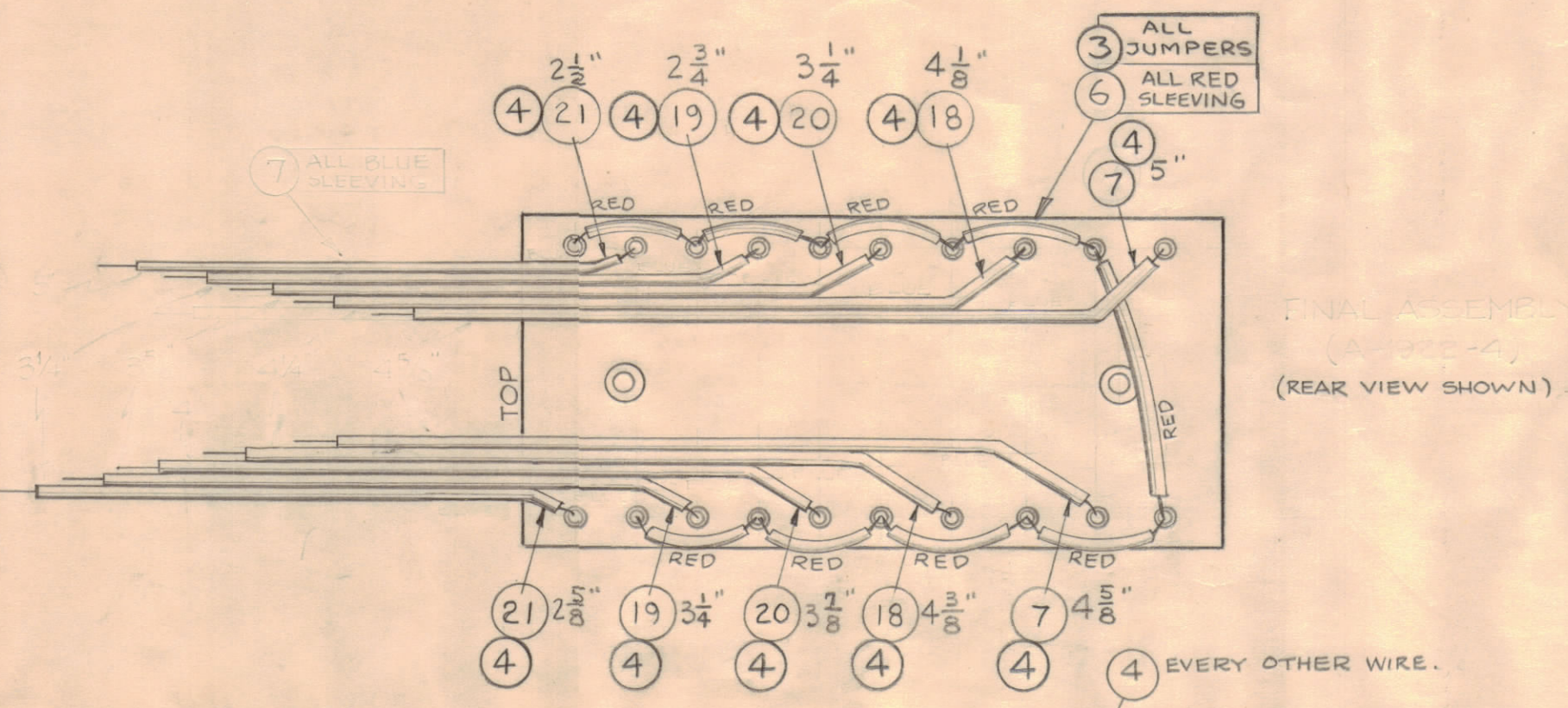
ALL LETTERING 1/8 HIGH BLACK GOTHIC

LETTERING (A-1922-2)



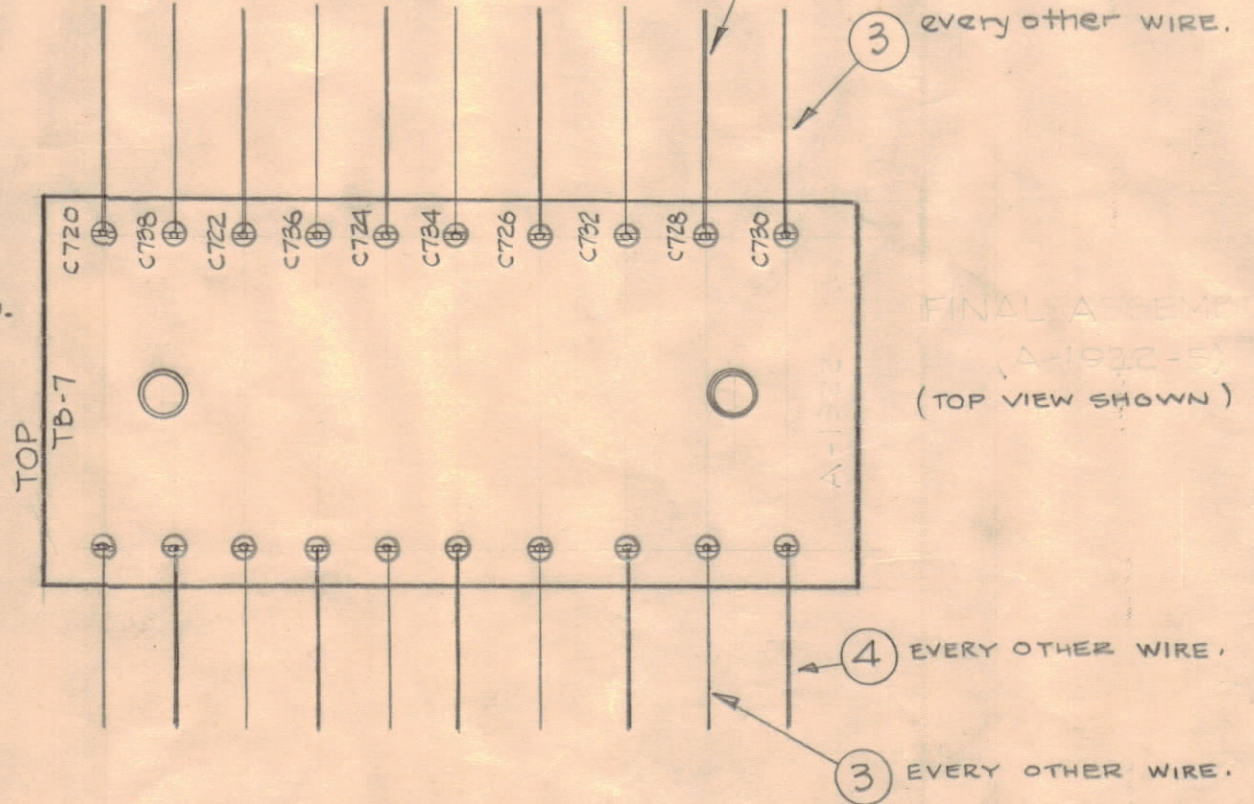
SUB-ASSEMBLY (A-1922-3)

NOTE: DIMENSIONS GIVEN ARE FOR LENGTH OF SLEEVINGS ONLY; BUSS WIRE SHOULD EXTEND 3/4 ON ALL WIRES.



FINAL ASSEMBLY (A-1922-4) (REAR VIEW SHOWN)

FINAL ASSY A-1922-4



FINAL ASSEMBLY (A-1922-5) (TOP VIEW SHOWN)

NOTE: BUSS WIRE 1 1/2" LONG.

X	21	PX-100-7-042	INSULATION SLEEVING	VIOLET
X	20	PX-100-5-042		GREEN
X	19	PX-100-4-042		YELLOW
X	18	PX-100-2-042	INSULATION SLEEVING	RED
1	17	CX-104-33	CAPACITOR	C738
1	16	-32		C736
1	15	-31		C734
1	14	-30		C732
1	13	-29		C730
1	12	-28		C728
1	11	-27		C726
1	10	-26		C724
1	9	-24		C722
1	8	CX-104-23	CAPACITOR	C720
X	7	PX-100-6-042	INSULATION SLEEVING	BLUE
X	6	PX-100-2-034	INSULATION SLEEVING	RED
X	5	BS-100	SOLDER, SOFT	
X	4	WL-100-5	WIRE BUSS-BAR TINNED	
X	3	WL-100-7	WIRE BUSS-BAR TINNED	
2	2	TE-108-13	THREADED STANDOFF, RIVET-TYPE	
20	1	TE-109-3	LUG SPLIT TERMINAL	

REQ. ITEM	PART NO.	DESCRIPTION	SYMBOL
SEE MACHINING		THE TECHNICAL MATERIEL CORP. MAMARONECK, NEW YORK	
SEE MACHINING		CAPACITOR MOUNTING BOARD	
MATERIAL			
TYPE & TEMPER			
HEAT TREAT. SPEC.			
FINISH & SPEC. NO.			

NOTICE TO PERSONS RECEIVING THIS DRAWING

THE TECHNICAL MATERIEL CORPORATION claims proprietary right in the material disclosed hereon. This drawing is issued in confidence for engineering information only and may not be reproduced or used to manufacture anything shown hereon without permission from THE TECHNICAL MATERIEL CORPORATION to the user. This drawing is loaned for mutual assistance and is subject to recall at any time.

Property of:
THE TECHNICAL MATERIEL CORPORATION
MAMARONECK, NEW YORK

ISSUE ZONE	DESCRIPTION	DATE	CH. NO.	DRAFTS	CHECKER	ENG. APP.
D	DESIGN (3) (4) CALLOUTS ADD. TO REAR VIEW	9-16-64	12377	AKB	@	
C	D4 ON STAGE 4, LENGTHS CLARIFIED	3-1-63	8362			
B	B2 ITEM 2 WAS TE-108-8	6/14/61	5082	Djm		
A	D2 ITEMS 18-21 ADDED	9-7-60		CU		

DEC. DIM. ±
FRAC. DIM. ±
ANGULAR DIM. ±

SCALE: MAXIMUM ALLOWABLE TOLERANCES HAVE BEEN DETERMINED AND ANY DEVIATIONS WILL BE CAUSE FOR REJECTION. REMOVE ALL BURRS AND SHARP EDGES

REQ PER UNIT	MODEL	SECTION	ASSY. NO.	DATE
1	CLL-1			6-22-60