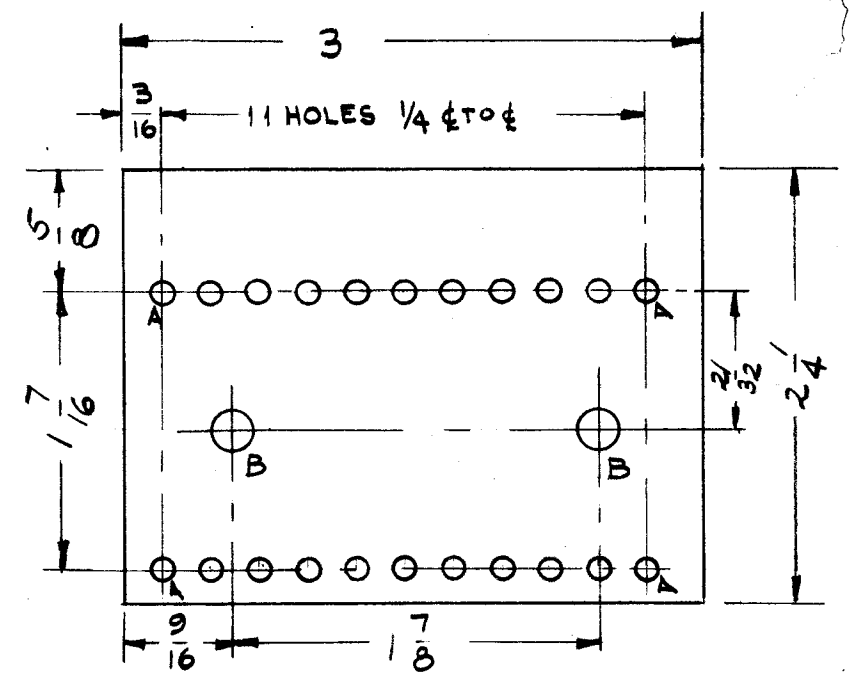
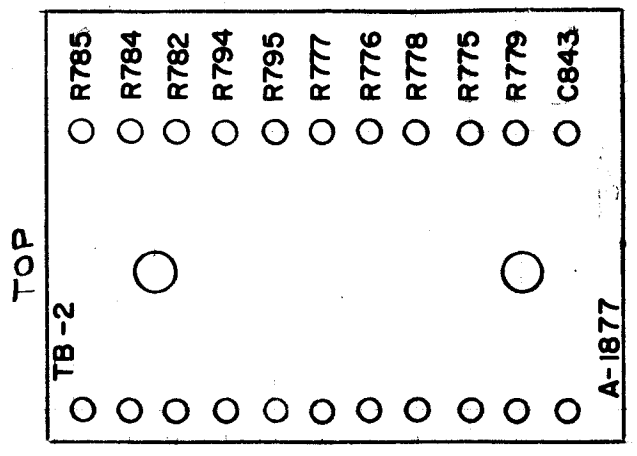


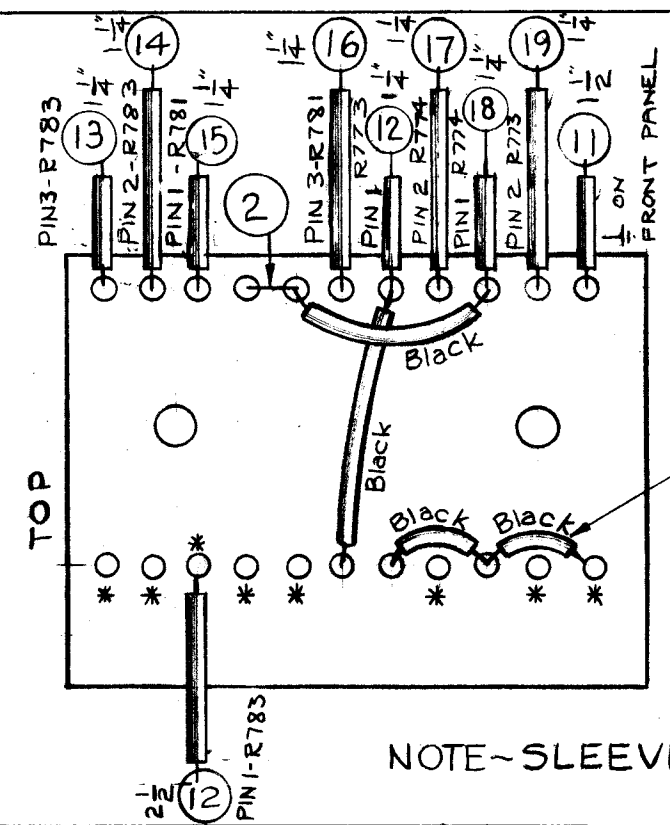
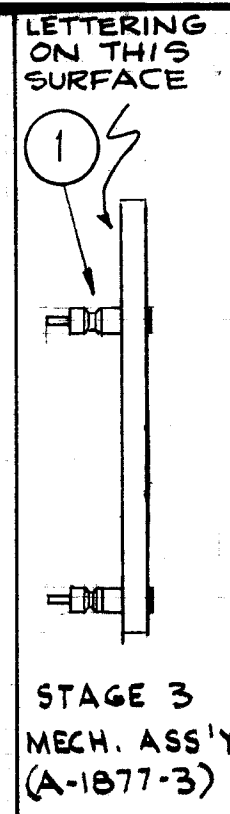
A-1877 F



A - NO. 32 DRILL (.116) DIA.  
 B - 11/64 (.171) DIA.  
 STAGE 1 MACHINING (A-1877-1) 1/8 PHENOLIC XXXP



ALL LETTERING 1/8 HIGH BLACK GOTHIC.  
 MARKING PROCESS: AS PER TMC SPECIFICATION S-727  
 STAGE 2 LETTERING (A-1877-2)



REAR VIEW SHOWN

STAGE 4 ~ FINAL ASSEMBLY (A-1877-4)

SOLDER ALL CONNECTIONS EXCEPT ONES MARKED \*, WHICH WILL BE SOLDERED UPON ASS'Y. OF BOARD INTO UNIT.

NOTE ~ SLEEVING STAGGERED TO CLARIFY DIMENSIONING. (DO NOT SCALE)

18 2 DENOTES LENGTH OF SLEEVING BUSS BAR TO BE 3/4 LONGER

X	19	PX104-7-034	INSULATION, SLEEVING	GRAY
X	18	PX104-8-034		OR.
X	17	PX104-4-034		GREEN
X	16	PX104-9-034		VIOLET
X	15	PX104-2-034		YELL.
X	14	PX104-3-034		RED
X	13	PX104-5-034		BR'N
X	12	PX104-6-034		Blue
X	11	PX104-1-034	INSULATION, SLEEVING	Black
1	10	CC100-16	CAPACITOR, DISC	C843
2	9	RC20GF564J	RESISTOR, CARBON	R778 R779
2	8	RC20GF824J		R775 R776
2	7	RC20GF683J		R782 R777
2	6	RC20GF222J		R794 R795
1	5	RC20GF333J		R784
1	4	RC20GF124J	RESISTOR, CARBON	R785
X	3	BS100	SOLDER, SOFT	
X	2	WL100-7	WIRE, BUSS BAR, TINNED	
22	1	TE109-3	LUG, SPLIT TERMINAL	

ISSUE	ITEM	CHANGED FROM	DATE	CH. NO.	DRAFTS	CHECKER	ENG. APP.
F	1	CHGD RES. TOL. FR "K" TO "J"	10/18/66	17048	RME	[Signature]	[Signature]
E	-	PX104-X-034 WAS PX100-X-022	1/13/66	15667	X.V.	[Signature]	[Signature]

TOLERANCES: DEC. DIM. ±, PRAC. DIM. ± 1/64, ANGULAR DIM. ±

SCALE: MAXIMUM ALLOWABLE TOLERANCES HAVE BEEN DETERMINED AND ANY DEVIATIONS WILL BE CAUSE FOR REJECTION. REMOVE ALL BURRS AND SHARP EDGES

REQ. PER UNIT	1	MODEL	CLL-1	PROJECT NO.		ASS'Y. NO.		DATE	4-23-60
USED ON									

REQ. ITEM	PART NO.	DESCRIPTION	SYMBOL
THE TECHNICAL MATERIEL CORP. MAMARONECK. NEW YORK			
STOCK SIZE			
ASSEMBLY, TERMINAL BOARD			
MATERIAL			
TYPE & TEMPER	HEAT TREAT. SPEC.	DRAWN	CHECKED
		[Signature]	[Signature]
FINISH & SPEC. NO.		ELEC. DES. APP.	MECH. DES. APP.
			A-1877 F