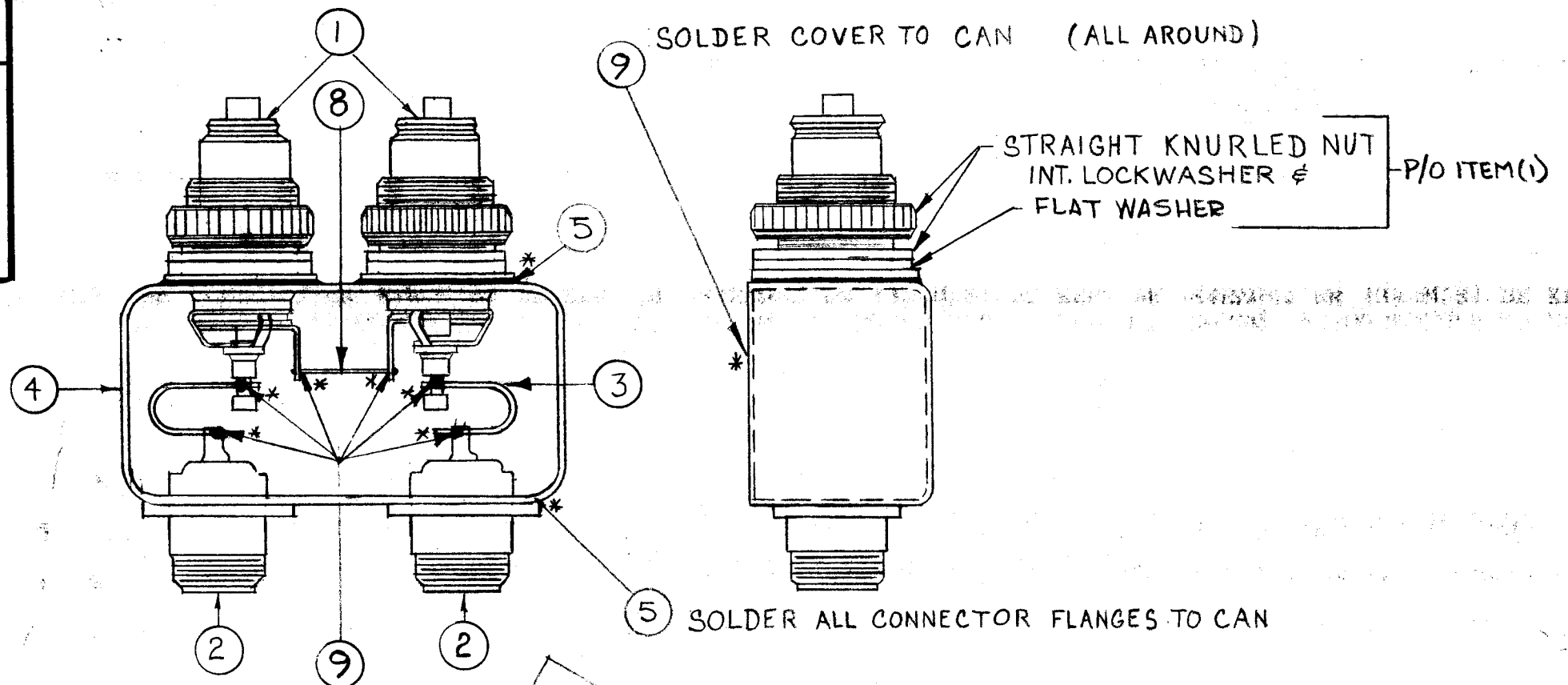
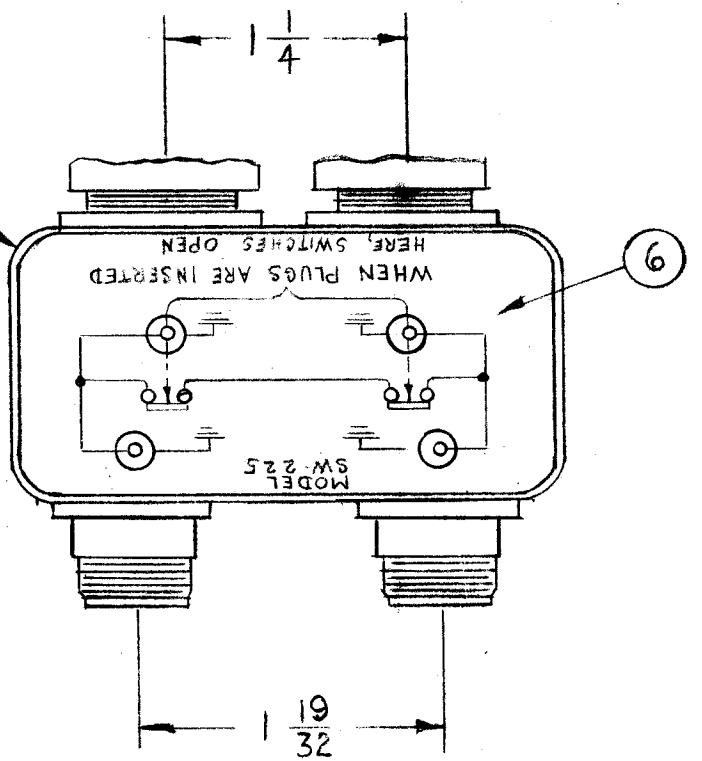


A-1855 G



PLACE SCHEMATIC ON COVER AS SHOWN



NOTES

1. INDUCTION HEATING EQUIPMENT SET AT:
AMPERES -
SECONDS -
2. USE ITEM (5) FOR MOUNTING ITEM (1) AND ITEM (2).
3. USE ITEM (9) FOR MOUNTING ITEM (3) ITEM (8) AND FOR SEALING COVER ITEM (4).
4. STRAP ITEM (3) MUST BE KEPT AS FLEXIBLE AS POSSIBLE; DO NOT ALLOW SOLDER TO RUN OVER STRAP. LAY STRAP IN SO THAT IT CANNOT TOUCH CAN OR CONNECTOR BODIES.
5. FINISH AS FOLLOWS:
S-114 - ZINC CHROMATE PRIMER
S-115 - TMC SMOOTH GRAY ENAMEL
(DO NOT PAINT CONNECTOR BODIES.)
6. AFFIX ITEM (6) TO FRONT AS SHOWN.
7. AFFIX ITEM (7) TO REAR AS SHOWN.
8. * DENOTES SOLDER ALL AROUND.

ISSUE	ITEM	CHANGED FROM	DATE	CH. NO.	DRAFTS	CHECKER	ENG. APP.
G		IT. 2 PICTORIAL REV.	10.9.67	18534	H.G.	[Signature]	FB
F	1	IT. 7 WAS NP-224	5.15.66	16852	RME	[Signature]	[Signature]
E		ITEM 9 WAS BX157 IT 5 WAS BS106-9 IT 9 WAS BS106-2	4.19.66	16102	WFW	[Signature]	[Signature]
D	1	± 1/64 DIM ADDED (TOL.)	1.24.65	15139	R.V.V.	[Signature]	[Signature]
C	4	PICTORIAL CLARIFIED	2-	8	[Signature]	[Signature]	[Signature]
	3	NOTES CLARIFIED	28-	2	[Signature]	[Signature]	[Signature]
	2	ITEM (5) WAS BS-106-1, (9) ADDED	63	28	[Signature]	[Signature]	[Signature]
B	1	Item 5 was BS-100	5.3.61	4808	J.C.B.	[Signature]	[Signature]
A	3	ITEM 8 ADDED			[Signature]	[Signature]	[Signature]
	2	ASSY PROCEDURE REVISED	4.12.61	4628	[Signature]	[Signature]	[Signature]
	1	INT LOCKWASHER NOTE ADDED			[Signature]	[Signature]	[Signature]

REQ.	ITEM	PART NO.	DESCRIPTION	SYMBOL
X	9	BS-100	SOLDER, TIN ALLOY	
1	8	WL-100-5	WIRE, BUSS, #18	
1	7	NP-488	NAMEPLATE	
1	6	NP-225-2	SCHEMATIC DIAGRAM (DECAL)	
X	5	BS-100-2	SOLDER, TIN ALLOY	
1	4	BX-157-1	CASE & COVER	
X	3	MS-1769	FLEXIBLE STRAP CONNECTOR	
2	2	JJ-254	CONNECTOR, RECEPTACLE	
2	1	JJ-162	CONNECTOR, RECEPTACLE	

STOCK SIZE		THE TECHNICAL MATERIEL CORP. MAMARONECK, NEW YORK	
MATERIAL		SW-225 ASS'Y SWITCH RF	
TYPE & TEMPER	HEAT TREAT. SPEC.	DRAWN	CHECKED
		[Signature]	[Signature]
FINISH & SPEC. NO.		ELEC. DES. APP.	MECH. DES. APP.
		[Signature]	[Signature]

11	SPP-5		3-25-60
REQ. PER UNIT	MODEL	PROJECT NO.	ASS'Y. NO.
			DATE
USED ON			