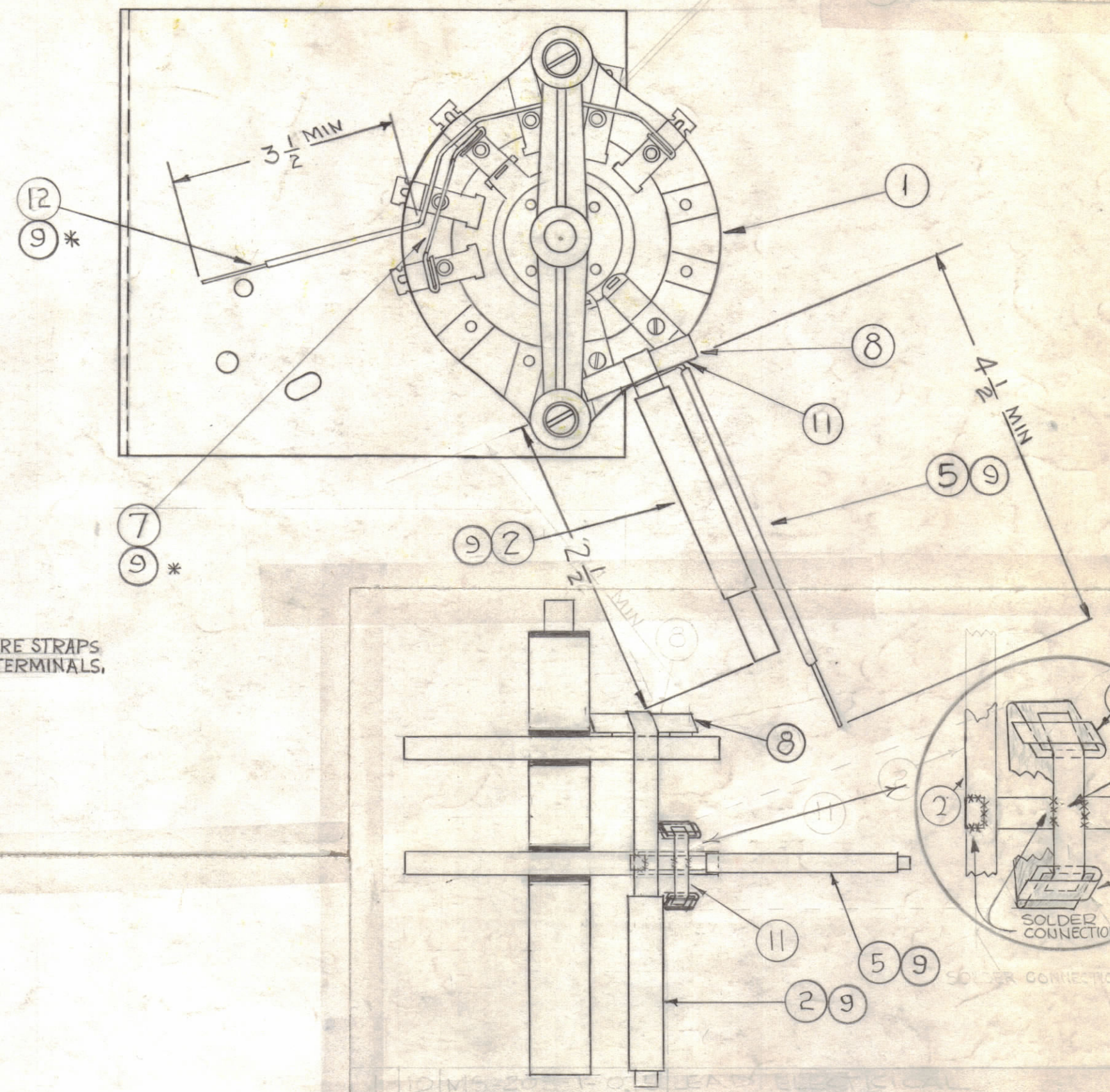
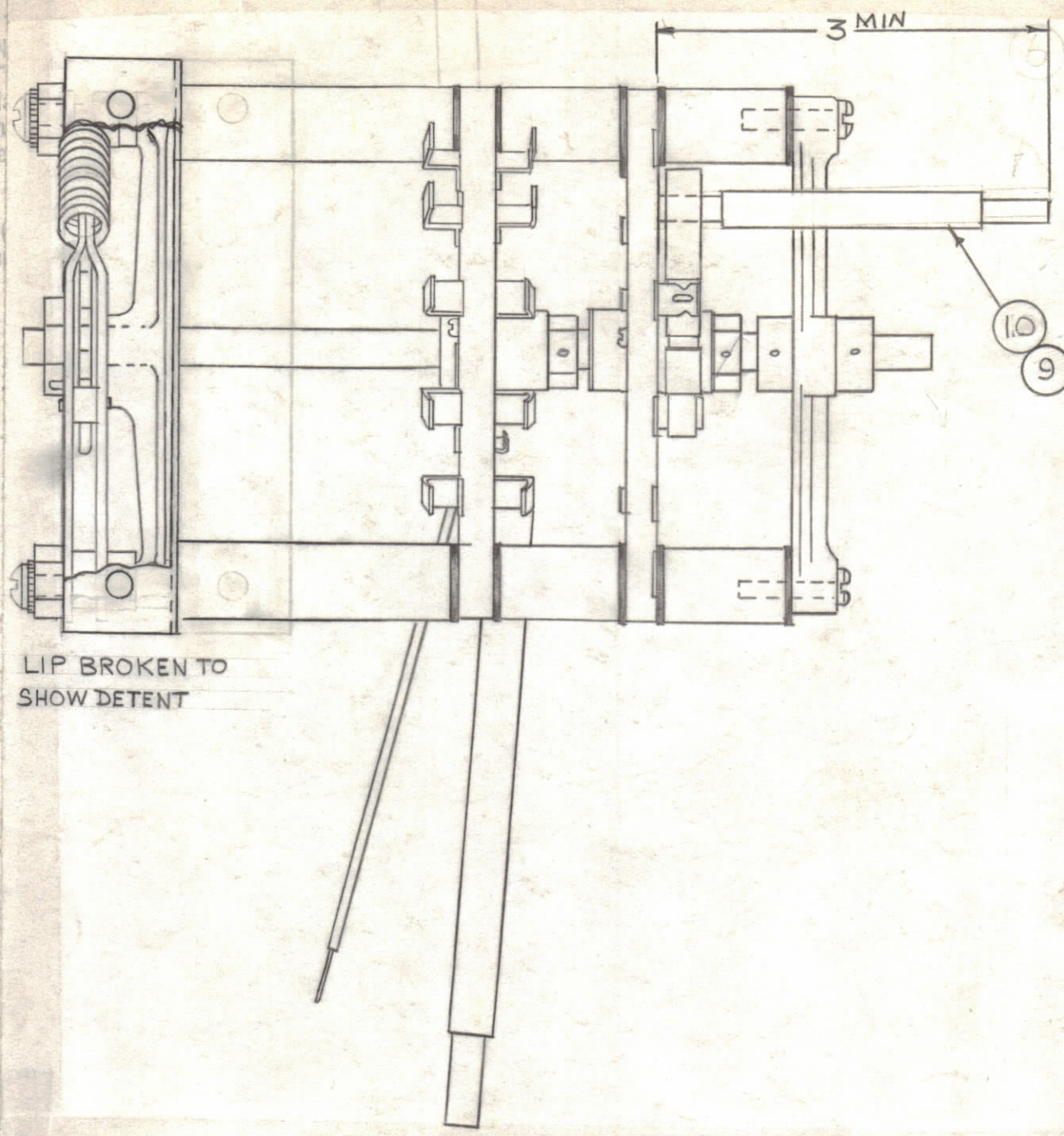


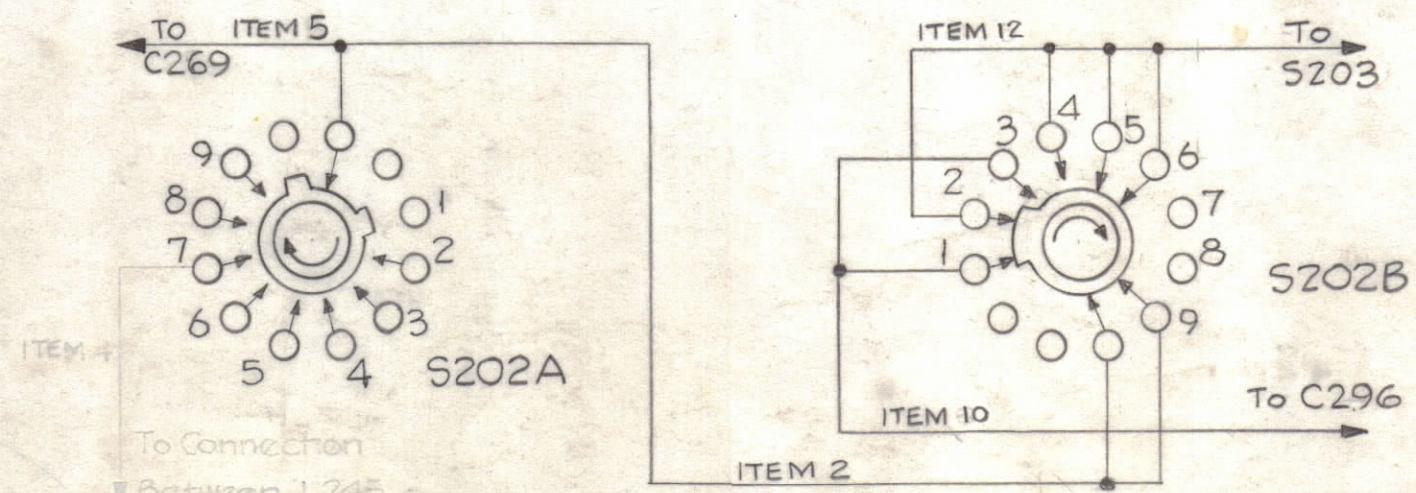
NOTICE TO PERSONS RECEIVING THIS DRAWING

THE TECHNICAL MATERIEL CORPORATION claims proprietary right in the material disclosed herein. This drawing is issued in confidence for engineering information only and may not be reproduced or to manufacture anything shown hereon without permission from THE TECHNICAL MATERIEL CORPORATION to the user. This drawing is loaned for assistance and is subject to recall at any time.

Property of:
THE TECHNICAL MATERIEL CORPORATION
MAMARONECK, NEW YORK



* USE ITEM 9 WHERE STRAPS CROSS OTHER TERMINALS.



SCHEMATIC DIAGRAM

REQ. ITEM	PART NO.
1	10 MS-203-1-3.25
1	11 MS-203-1-1.25
1	12 MS-203-1-7.00
2	13 MS-203-1-0.50

REQ. ITEM	PART NO.	DESCRIPTION	SYMBOL
X 14	BS-100	SOLDER, SOFT TIN ALLOY	
2	13 MS-203-1-0.50	LEAD, ELECTRICAL	
1	12 MS-203-1-7.00		
1	11 MS-203-1-1.25		
1	10 MS-203-1-3.25	LEAD, ELECTRICAL	
14	9 PX-370-3-7	Sleeving, Teflon	
1	8 MS-203-1-1.50	Lead, ELECTRICAL	
1	7 MS-203-1-2.00		
	6 DELETED		
1	5 MS-203-1-6.00		
	4 DELETED		
	3 DELETED		
1	2 MS-203-1-5.00	Lead, ELECTRICAL	
1	1 SW-254	Switch, Rotary, P.A. Band.	

SYM	ZONE	DESCRIPTION	DATE	CH. NO.	DRAFTS	CHECKER	ENG. APP.
E		ITEM 9 *CALL OUT & DIM'S ADDED; S203 REV	9-12-67	18467	H.G.		FB
D		PICT ADDED VIEW & ITEM 10, CHG'D 5 & 8 TO 12 & 11 B/M CHG'D P/N ITEM 2 & 5, CHG'D REQ ITEM 5 & 8 & 9, ADDED ITEMS 10, 11, 12 & 13.	7-27-66	16666	RME		RP

UNLESS OTHERWISE SPECIFIED:
DIMENSIONS ARE IN INCHES
TOLERANCES ON
FRACTIONS ± 1/64 DECIMALS ± .005 ANGLES ± 1/2°

SCALE
MAXIMUM ALLOWABLE TOLERANCES HAVE BEEN DETERMINED AND ANY DEVIATIONS WILL BE CAUSE FOR REJECTION.
REMOVE ALL BURRS & SHARP EDGES

REQ. PER UNIT	MODEL	SECTION	ASS'Y. NO.	DATE
1	RFC-1			12-19-60
1	RFD-1			12-19-60

REQ. ITEM	PART NO.	DESCRIPTION	SYMBOL
THE TECHNICAL MATERIEL CORP. MAMARONECK, NEW YORK			
AS-118 ASSEMBLY SWITCH ASS'Y. IPA BAND			
DRAWN		CHECKED	
RK		SJM	
ELEC. DES. APP.		MECH. DES. APP.	
		SHEET OF	
		A-1846	
		E	