

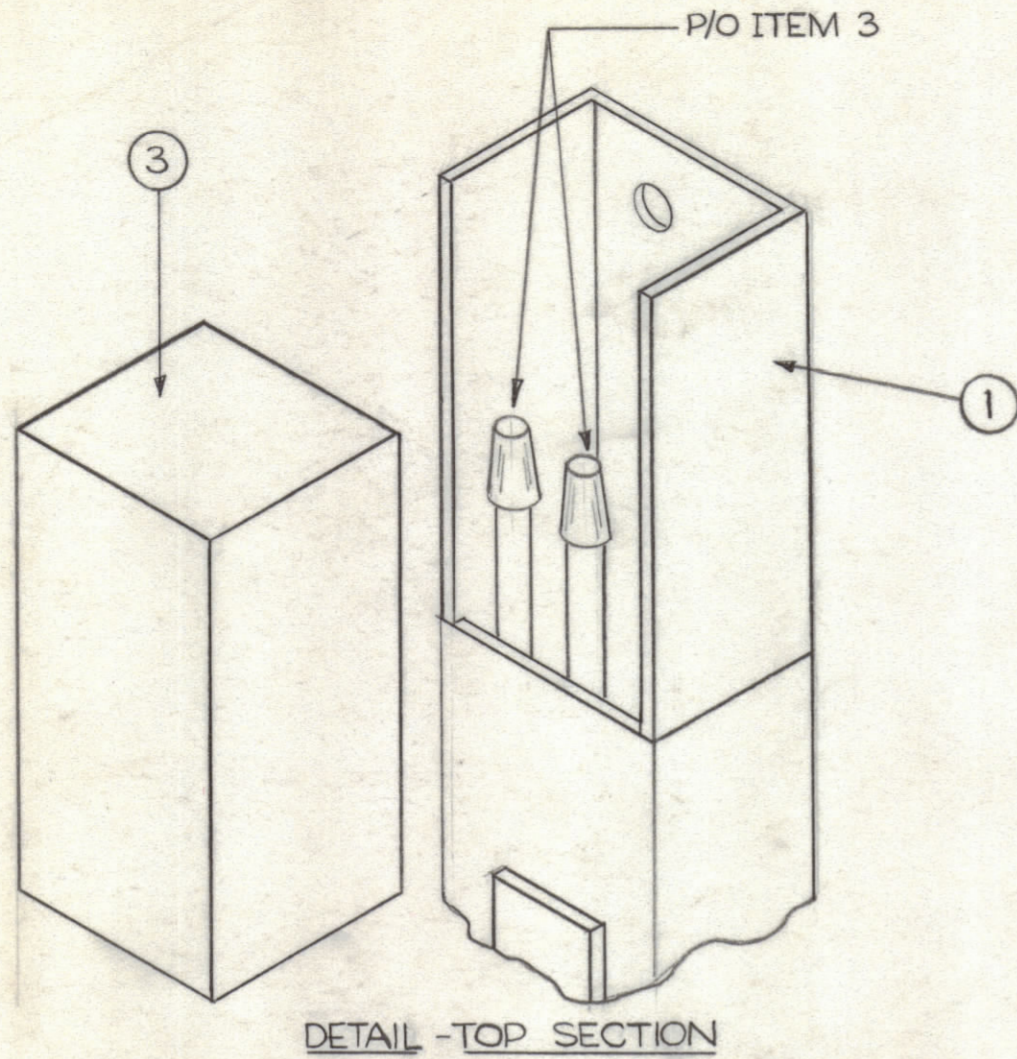
IF IT IS FOUND DESIRABLE TO CHANGE ANY TOLERANCE OR OTHER DETAIL SPECIFIED ON THIS DRAWING NOTIFY THE PURCHASER PROMPTLY.

MAXIMUM ALLOWABLE TOLERANCES HAVE BEEN DETERMINED AND DEVIATIONS WILL BE CAUSE FOR REJECTION. REMOVE ALL BURRS AND SHARP EDGES.

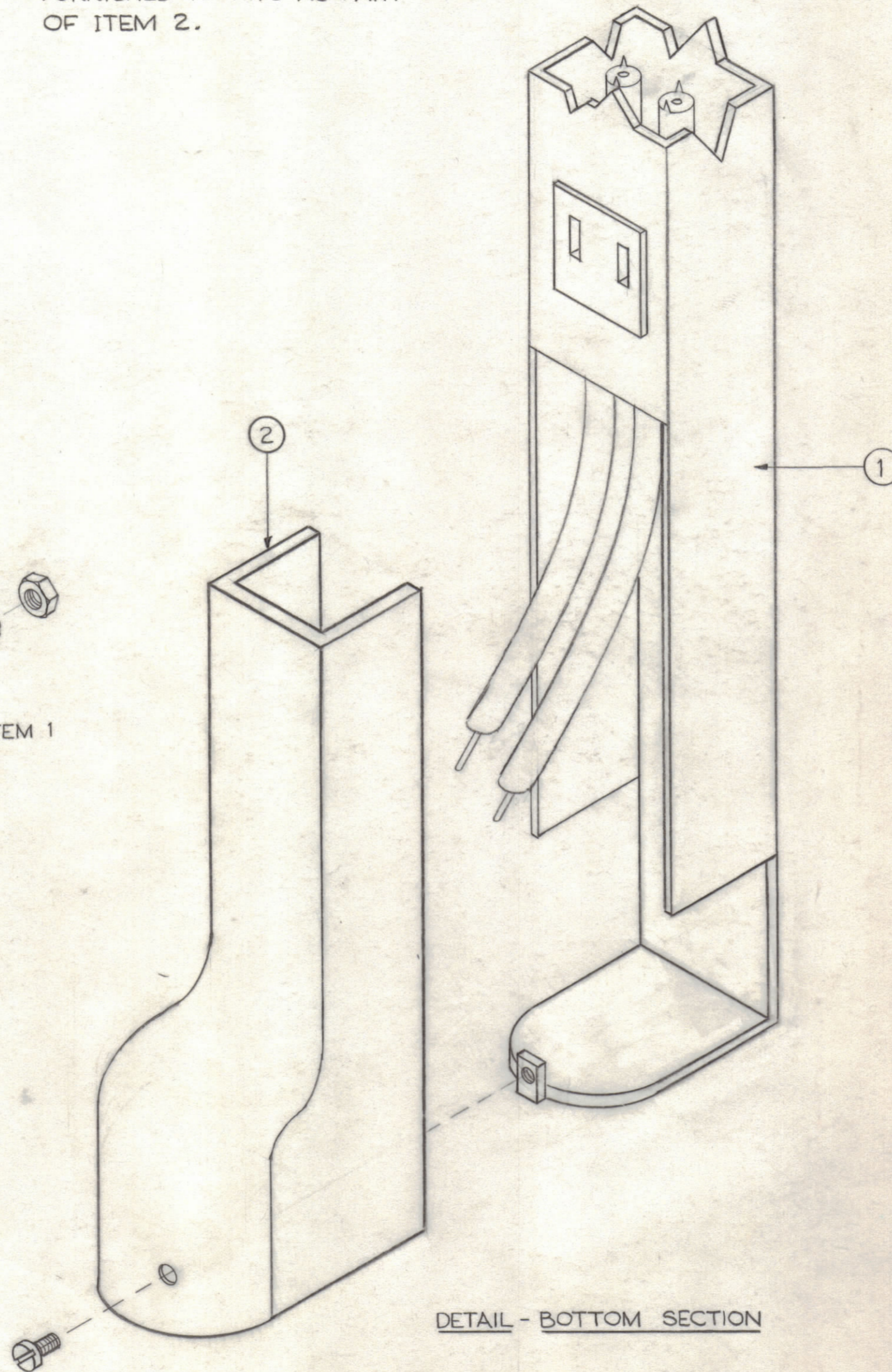
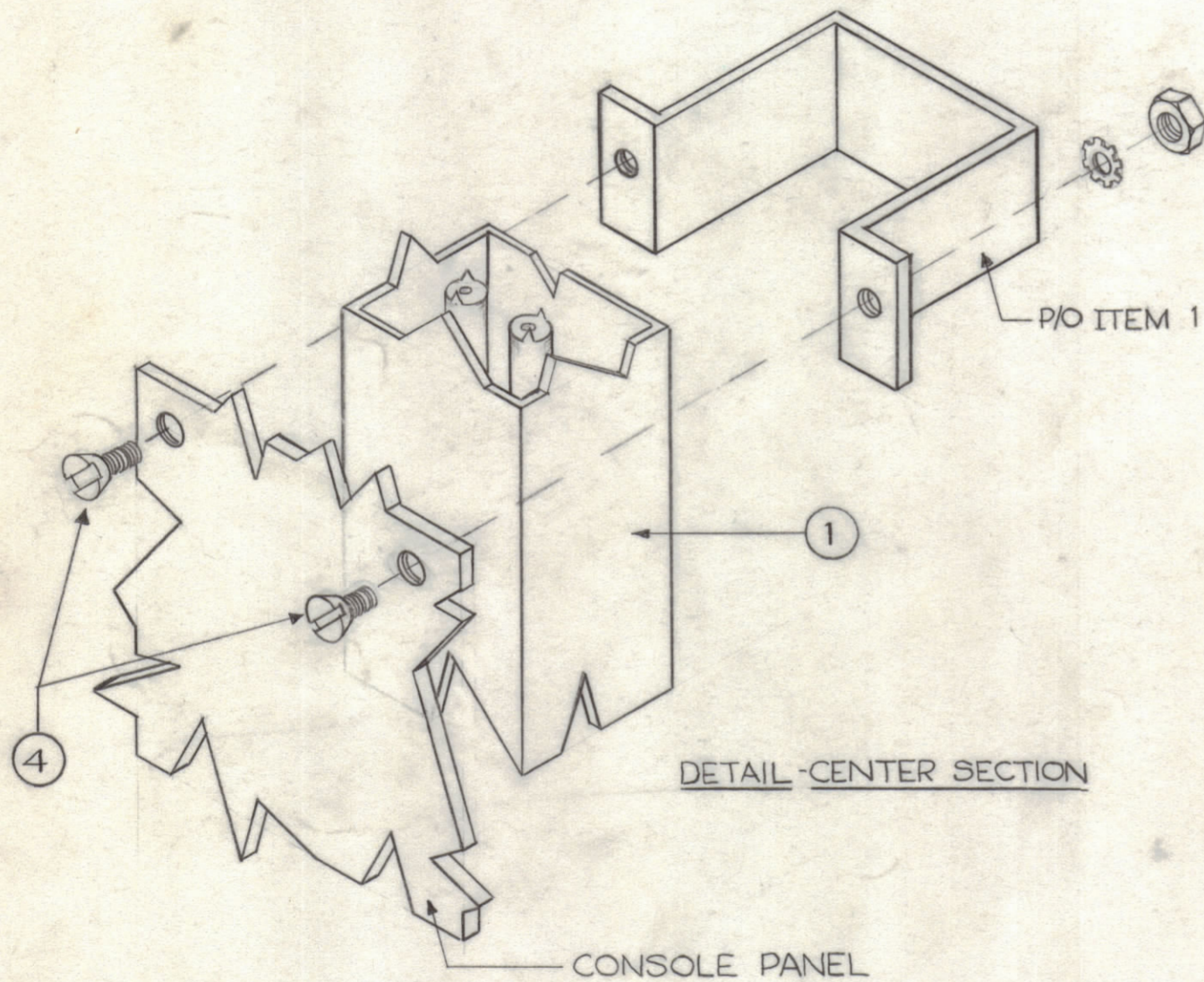
NOTICE TO PERSONS RECEIVING THIS DRAWING

THE TECHNICAL MATERIEL CORPORATION claims proprietary right in the material disclosed hereon. This drawing is issued in confidence for engineering information only and may not be reproduced or used to manufacture anything shown hereon without permission from THE TECHNICAL MATERIEL CORPORATION to the user. This drawing is loaned for mutual assistance and is subject to recall at any time.

Property of:  
THE TECHNICAL MATERIEL CORPORATION  
MAMARONECK, NEW YORK



NOTE :  
ITEMS 5 & 6 (LOOSE ITEMS) ARE FURNISHED TO TMC AS PART OF ITEM 2.



A-1810

2	6	CU-125	CRIMP CONNECTOR (SEE NOTE)
2	5	PX-371	INSULATOR TUBE (SEE NOTE)
1	4	SCBS0632BN3	SCREW, MACHINE
1	3	PO-110	END BLANK, TOP
1	2	PO-137-2	END BLANK, BOTTOM
1	1	PO-109-3	POWER STRIP

REQ. ITEM	PART NO.	DESCRIPTION	SYMBOL
STOCK SIZE		THE TECHNICAL MATERIEL CORP. MAMARONECK, NEW YORK	
MATERIAL		POWER STRIP ASSEMBLY	
WEIGHT PER PC.		DRAWN: <i>DB Mann</i>	
TYPE & TEMPER		ELEC. DES. APP.:	MECH. DES. APP.:
HEAT TREAT. SPEC.		CHECKED: <i>JLS</i>	FINAL APPROVAL: <i>AM</i>
FINISH & SPEC. NO.		A-1810	

ISSUE	ITEM	CHANGED FROM	DATE	CH. NO.	DRAFTS	CHECKER	ENG. APP.
TOLERANCES				SCALE:			
ALL OTHERS	DEC. DIM. ±	DRILL, PUNCH, COMMERCIAL STOCK SIZES AND MANUFACTURERS TOLERANCES ARE NOT INCLUDED.					
	FRAC. DIM. ±						
	ANGULAR DIM. ±						

1	CONS BASIC			1-11-60
REQ. PER UNIT	MODEL	PROJECT NO.	ASSY. NO.	DATE
USED ON				