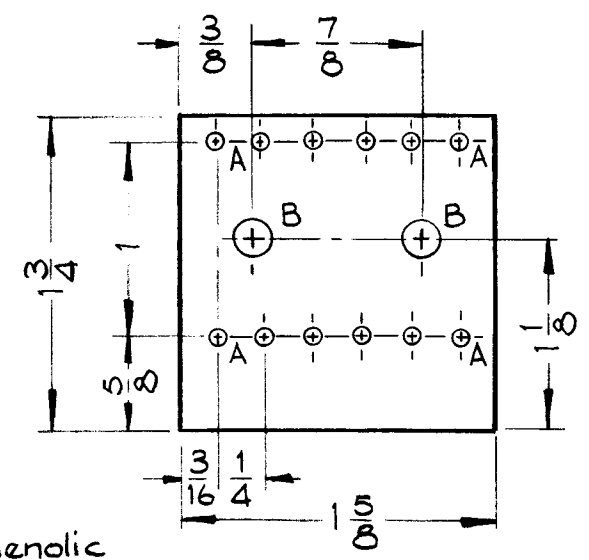


A-1803 A

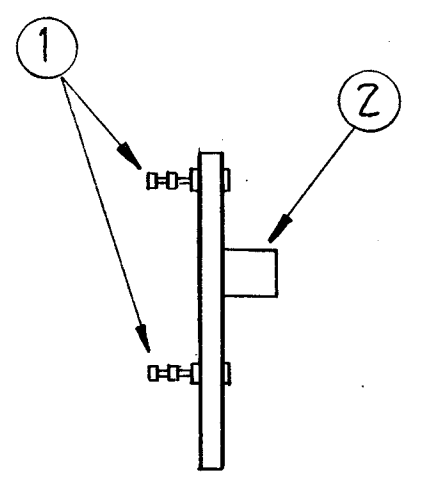
HOLES REQ'D.
 A ~ 5/64 (.078) Dia 12
 B ~ .189 Dia 2



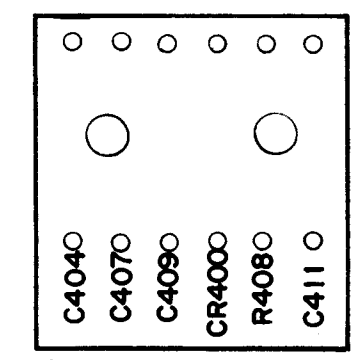
NOTE:
 12 holes in two rows of 6, 1/4" apart from C to C.

Material
 1/16th. Natural Phenolic
 XXXP

STAGE 1 ~ MACHINING (TOP)



STAGE 3 ~ SUB-ASSEMBLY (SIDE)



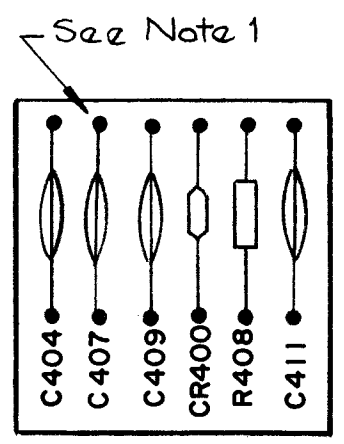
Stamp as Shown

STAGE 2 ~ STAMPING (TOP)

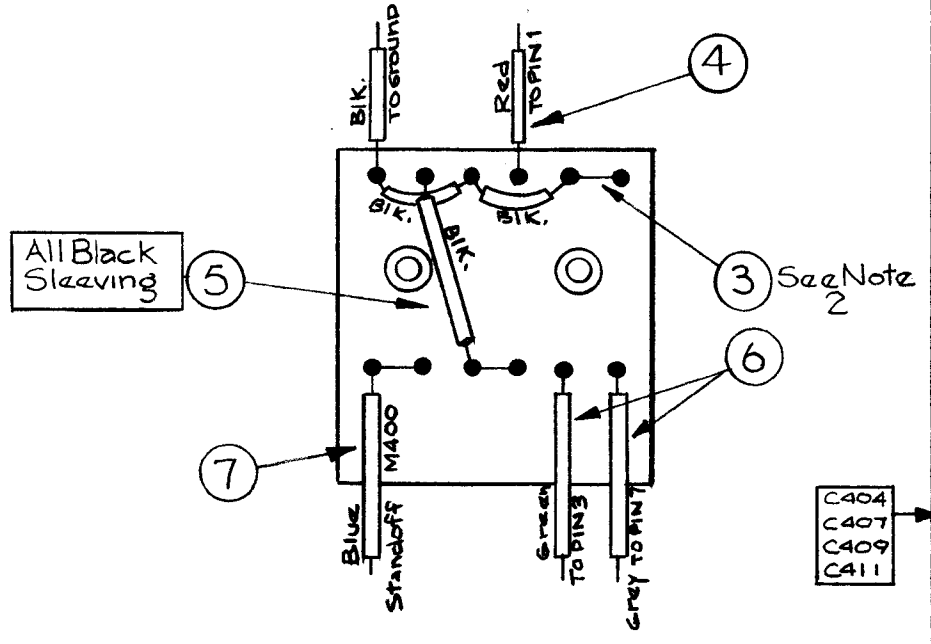
MARKING PROCESS: AS PER TMC SPECIFICATION S-72

All Lettering 1/8 high Black Gothic.

- ~NOTES~
- Solder all connections marked ●, with soft solder (BS-100).
 - All buss wire used is WL-100-8, #24.



~STAGE 4~
 COMPONENT LAYOUT & WIRING



REQ. ITEM	PART NO.	DESCRIPTION	SYMBOL
1	10	RC20GF153J	Resistor, Fixed, Comp.
1	9	1N67	Diode
4	8	CC-100-28	Capacitor, Disk
X	7	PX-104-6-022	Insulation, Sleeving
X	6	PX-104-4-022	Insulation, Sleeving
X	5	PX-104-1-022	Insulation, Sleeving
X	4	PX-104-3-022	Insulation, Sleeving
X	3	WL-100-8	Wire, Buss-bar, Tinned
2	2	TE-108-1	Standoff, Rivet Type
12	1	TE-168-4B	Terminal, Miniature

ISSUE	ITEM	CHANGED FROM	DATE	CH. NO.	DRAFTS	CHECKER	ENG. APP.
A	*	PX104's WERE PX100's IT 10 WAS 153 UPDATED	10/120/65	14811	H.V.V.	DA	[Signature]

REQ. PER UNIT	MODEL	PROJECT NO.	ASS'Y. NO.	DATE
1	SLM-2		TB-2	11-13-59

1/16th STOCK SIZE		THE TECHNICAL MATERIEL CORP. MAMARONECK, NEW YORK	
PHENOLIC MATERIAL		TERMINAL BOARD 2 (SLM-2)	
XXXP	TYPE & TEMPER	HEAT TREAT. SPEC.	DRAWN
NATURAL			CHECKED
	FINISH & SPEC. NO.	ELEC. DES. APP.	MECH. DES. APP.
			FINAL APPROVAL
			A-1803 A