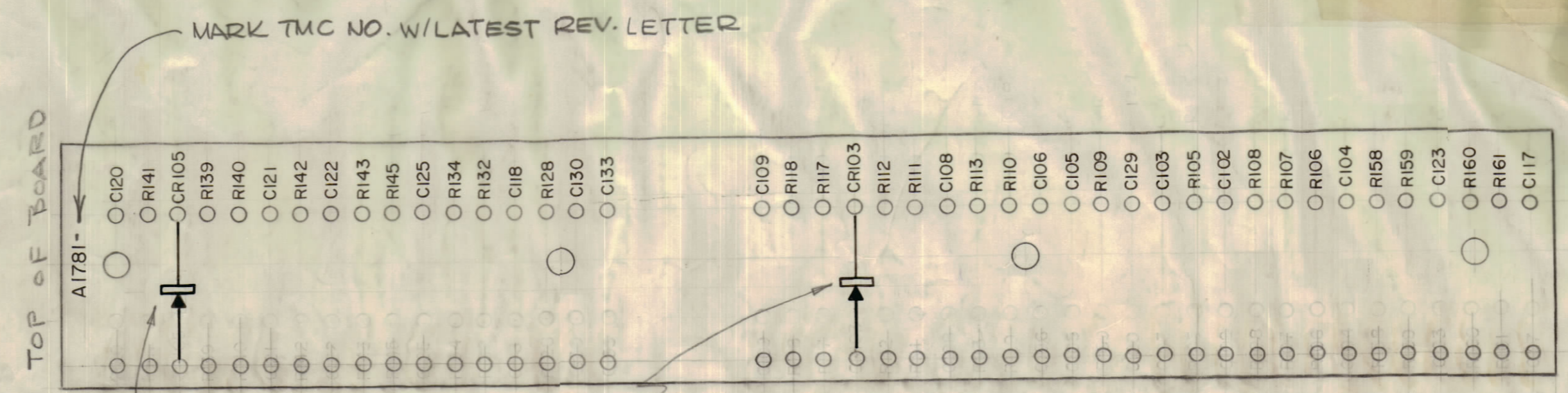
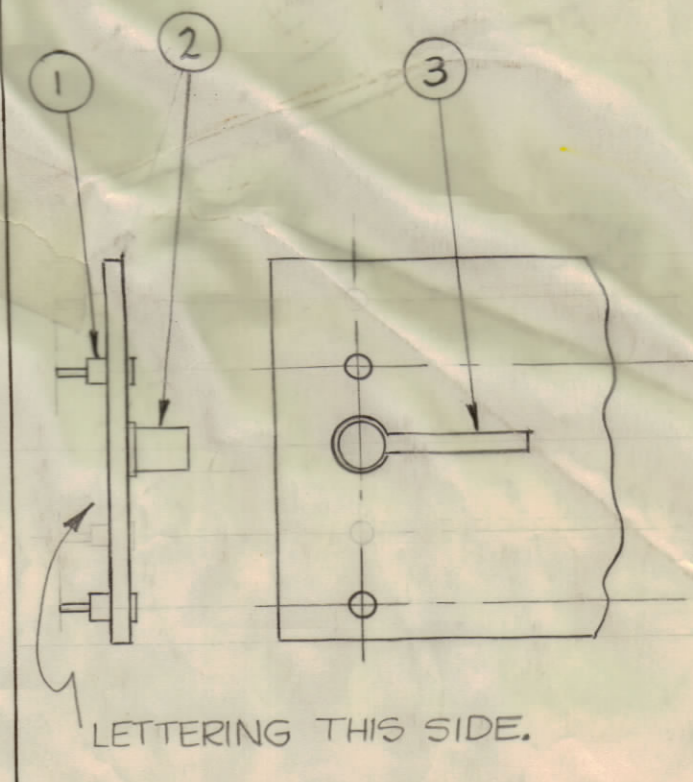


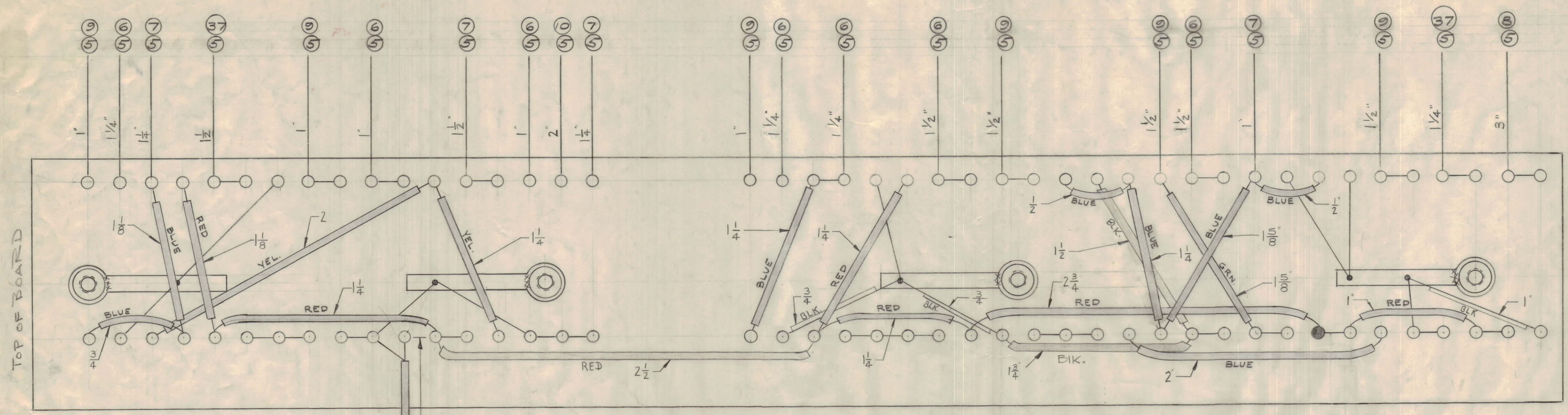
**STAGE 1 MACHINING**  
A-1781-1  
MATERIAL PHENOLIC XXXP, 1/8 THICK  
FINISH-NATURAL



**STAGE 2 STAMPING**  
A-1781-2  
LETTERING 1/8 BLACK GOTHIC.  
MARKING PROCESS: AS PER TMC SPECIFICATION S-727



**STAGE 3 - MECH. ASS'Y.**  
A-1781-3



**BOTTOM VIEW SHOWN**  
SCALE 2X  
A-1781-4  
FINAL ASSY.

NOTE ~ DO NOT SOLDER  
NOTE ~ SOFT SOLDER ALL MOUNTING STANDOFFS TO LUGS AS INDICATED BY (X,X)

REQ. ITEM	PART NO.	DESCRIPTION	SYMBOL
X 40	BS100	SOLDER, TIN ALLOY	
X 39	PX-100-1-022	INSULATION SLEEVING	BLK
X 38	DELETED		
X 37	PX-100-3-022	INSULATION SLEEVING	ORANGE
1 36	CM15C050J03M	MICA CAPACITOR	C133
2 35	CC-100-24	DISC CAPACITOR	C132
1 34	RC20GF333J	RESISTOR, FIXED COMP.	R160
1 33	RC20GF184J	RESISTOR, FIXED COMP.	R158
2 32	IN463	DIODE	CR-105
1 31	CN-106C104K	DISC CAPACITOR	C125
1 30	CM15C270J03	MICA CAPACITOR	C109
4 29	CC-100-16	DISC CAPACITOR	
1 28	RC20GF562J	RESISTOR, FIXED, COMP.	R106
2 27	RC20GF563J		R108
3 26	RC20GF103J		R107
1 25	RC20GF105J		R110
1 24	RC20GF472J		R113
1 23	RC20GF393J		R117
1 22	RC20GF222J		R118
1 21	RC20GF102J		R132
1 20	RC20GF271J		R145
2 19	RC20GF225J		R143
1 18	RC20GF153J		R140
5 17	RC20GF104J		
2 16	RC20GF332J	RESISTOR, FIXED, COMP.	R141
1 15	CM15C200J03	MICA CAPACITOR	C103
1 14	CM15B100K03		C105
4 13	CM15F101G03		
1 12	CM20F102G03		C121
1 11	CM20F561G03	MICA CAPACITOR	C120
X 10	PX-100-9-022	INSULATION SLEEVING	WHITE
X 9	1 5		GREEN
X 8	2		RED
X 7	1 6		BLUE
X 6	PX-100-4-022	INSULATION SLEEVING	YELLOW
X 5	WL-100-7	WIRE, BUSS-BAR, TINNED	
X 4	RG-174/U	CABLE R.F. MINIATURE	
4 3	TE-116-3	SOLDER LUG	
4 2	TE-108-13	STANDOFF, RIVET TYPE	
86 1	TE-109-3	TERMINAL	

ISSUE NO.	DESCRIPTION	DATE	CH. NO.	DRAFTS	CHECKER	ENG. APP.
F	BILL OF MAT'L UPDATED	12-20-64	12584	LHW		
E	LEAD LENGTHS CLARIFIED	7/3/62	6882	EP		
D	ITEM 38 DELETED WAS MW100J1/2 RED	11-9-60	3263	RLU		
C	ALL LEAD LENGTHS ADDED	9/6/60	3148	DIM		
B	ITEM 28 WAS RC-20GF562J	5-23-60	2350			
A	ITEM - 31 - CN 106C104K WAS CC-100-9	4-20-60	2166			

**NOTICE TO PERSONS RECEIVING THIS DRAWING**  
THE TECHNICAL MATERIEL CORPORATION claims proprietary right in the material disclosed hereon. This drawing is issued in confidence for engineering information only and may not be reproduced or used to manufacture anything shown hereon without permission from THE TECHNICAL MATERIEL CORPORATION to the user. This drawing is loaned for mutual assistance and is subject to recall at any time.  
Property of:  
**THE TECHNICAL MATERIEL CORPORATION**  
MAMARONECK, NEW YORK

REG. PER UNIT	MODEL	SECTION	ASSY. NO.	DATE
1	CHL-1			4-7-60

THE TECHNICAL MATERIEL CORP. MAMARONECK, NEW YORK			
<b>TERMINAL BOARD</b>			
<b>DIVIDER CHAIN, SYNTHESIZER</b>			
DESIGNED	DRAWN	ELEC. DES. APP.	MECH. DES. APP.
CHECKED			FINAL APPROVAL
A-1781 F			