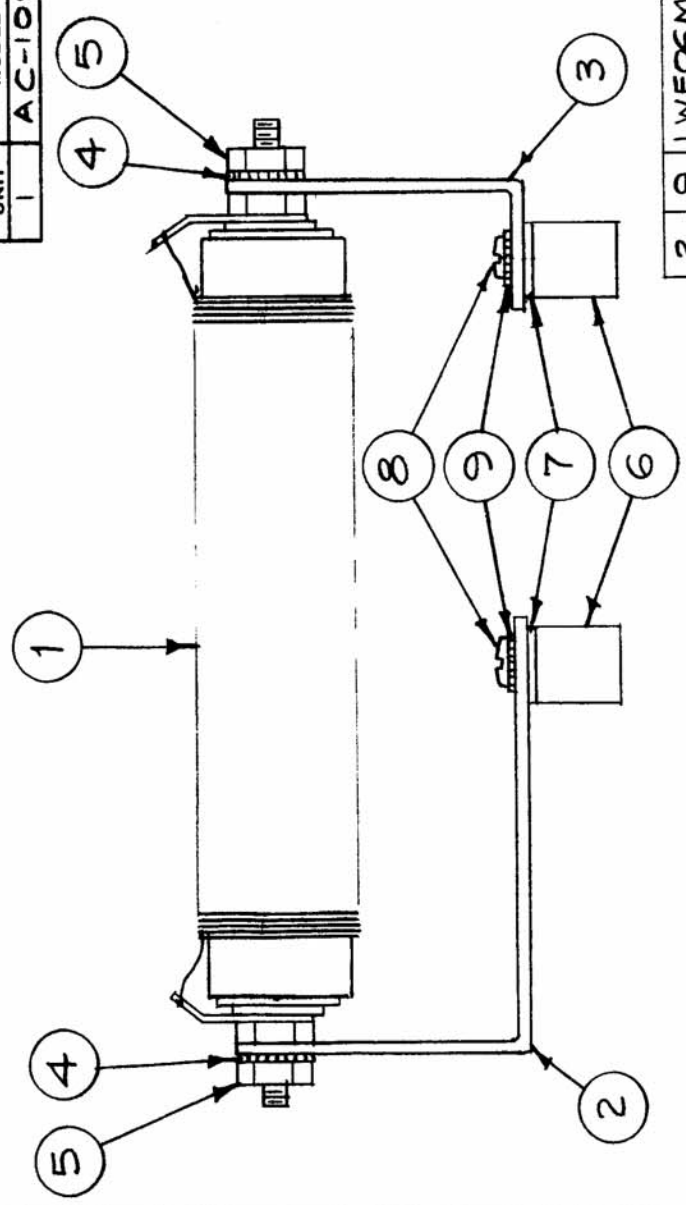


USED ON
ASSY. NO. DATE

MODEL
AC-105

REQ. PER. UNIT
1

A-1764



| REQ. ITEM | PART NO. | DESCRIPTION | SYMBOL |
|-----------|-------------|-------------------------|--------|
| 2 | LWEO6MRN | Lockwasher, Ext. | |
| 2 | SCBS0632BN5 | Screw, Machine | |
| 2 | WA-109-36 | Washer, Fiber | |
| 2 | NS3W01-8 | Insulator | |
| 2 | NTH1032BN12 | Nut, Hex | |
| 2 | LWE10MRN | Lockwasher, Ext. | |
| 1 | MS-1861 | Bracket, Top | |
| 1 | MS-1862 | Bracket, Bottom | |
| 1 | CL-179 | Coil, Fixed, RF, 38 mhy | NPL |

| ISSUE ITEM | CHANGED FROM | DATE | CH. NO. | DRAFTS | CHECKER | ENG. APP. |
|--|--------------|-----------------|---------|----------------|---------|-----------|
| TOLERANCES | | | | | | |
| SCALE: Full - Do Not Scale | | | | | | |
| MAXIMUM ALLOWABLE TOLERANCES HAVE BEEN DETERMINED AND ANY DEVIATIONS WILL BE CAUSE FOR REJECTION. REMOVE ALL BURRS AND SHARP EDGES | | | | | | |
| DEC. DIM. ± | | | | | | |
| FRAC. DIM. ± | | | | | | |
| ANGULAR DIM. ± | | | | | | |
| THE TECHNICAL MATERIEL CORP. | | | | | | |
| MAMARONECK, NEW YORK | | | | | | |
| AC-105 Ass'y. | | | | | | |
| (COIL, RF, Fixed, 38 mhy) | | | | | | |
| 16/9/59 | | | | | | |
| DRAWN | | CHECKED | | FINAL APPROVAL | | |
| [Signature] | | [Signature] | | [Signature] | | |
| ELEC. DES. APP. | | MECH. DES. APP. | | | | |
| FINISH & SPEC. NO. | | A-1764 | | | | |