

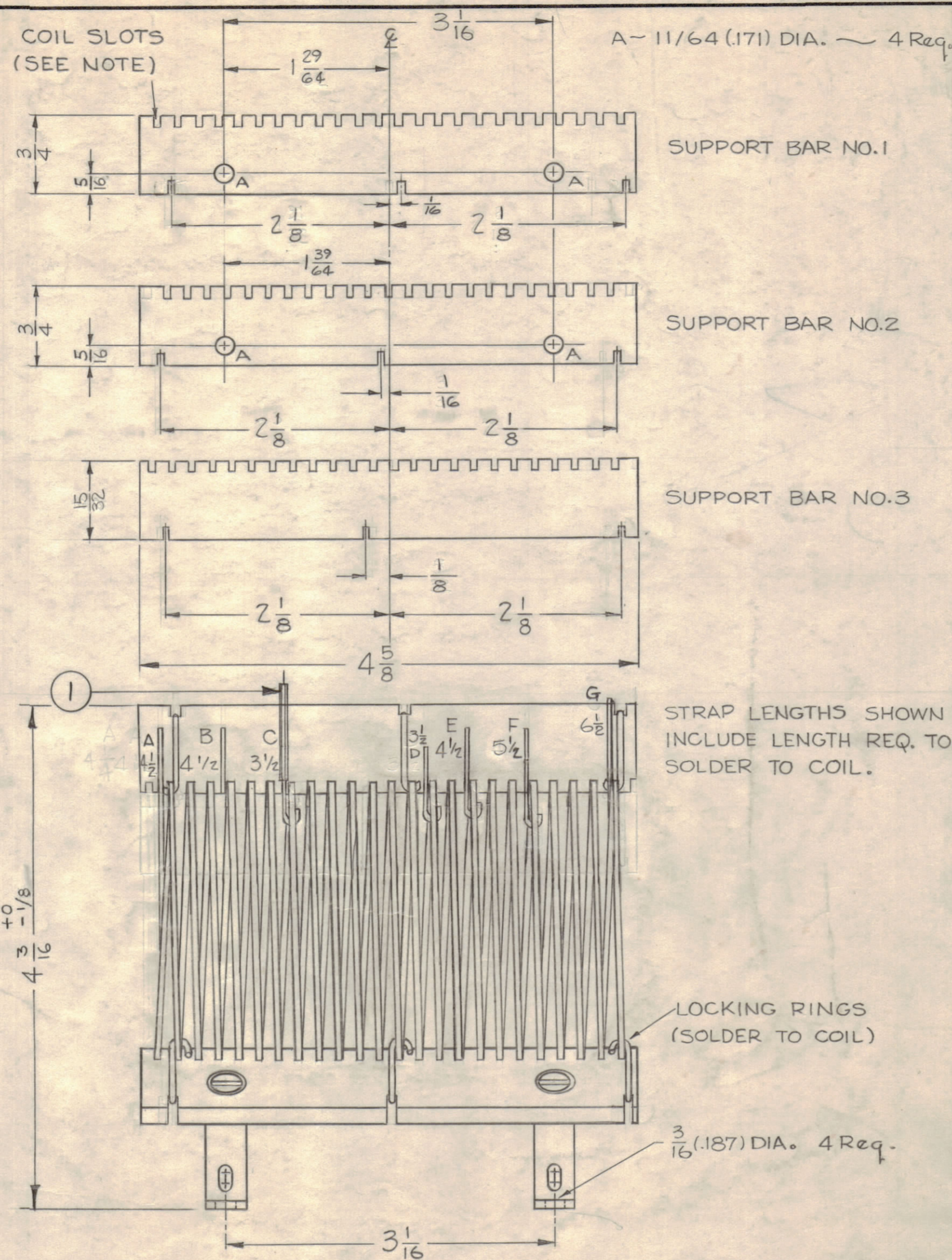
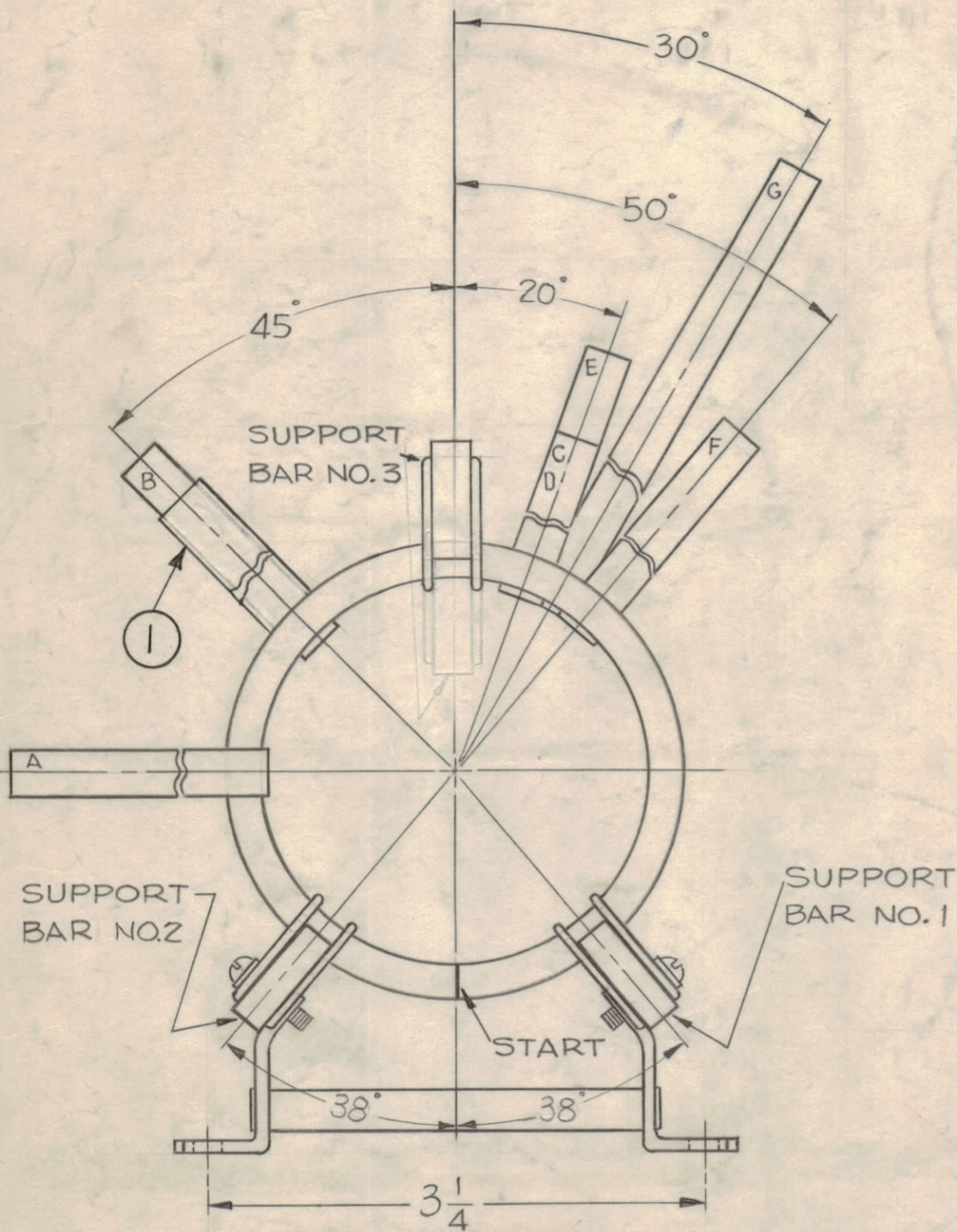
IF IT IS FOUND DESIRABLE TO CHANGE ANY TOLERANCE OR OTHER DETAIL SPECIFIED ON THIS DRAWING NOTIFY THE PURCHASER PROMPTLY.

MAXIMUM ALLOWABLE TOLERANCES HAVE BEEN DETERMINED AND DEVIATIONS WILL BE CAUSE FOR REJECTION. REMOVE ALL BURRS AND SHARP EDGES.

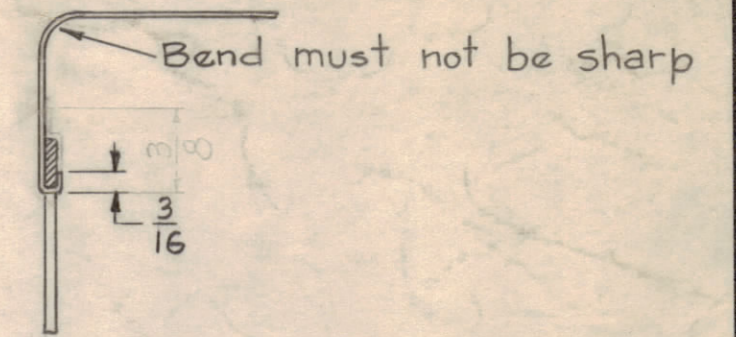
NOTE TO PERSONS RECEIVING THIS DRAWING

THE TECHNICAL MATERIEL CORPORATION claims proprietary right in the material disclosed herein. This drawing is issued in confidence for engineering information only and may not be reproduced or used to manufacture anything shown hereon without permission from THE TECHNICAL MATERIEL CORPORATION to the user. This drawing is loaned for mutual assistance and is subject to recall at any time.

Property of:
THE TECHNICAL MATERIEL CORPORATION
MAMARONECK, NEW YORK



BEND ALL STRAPS AS SHOWN AFTER SOLDERING FOR HANDLING.



STRAP MOUNTING
DETAIL

NOTES ~

- 1- SUPPORT BAR COIL SLOTS & LOCKING RING SLOTS TO BE THE SAME AS JOHNSON TYPE 23Z.
- 2- STRAPS ARE TO SOLDERED TO COIL WITH SILVER SOLDER AS SHOWN IN DETAIL.
- 3- COIL & STRAP ASSY TO BE SILVER PLATED .001 THICK. (AFTER ASSY)

A-1727 H

SPECIFICATIONS

COIL ~ 3" O.D. x 2 1/2" I.D. COPPER STRIP.
23 TURNS C.W..

STRAPS ~ 5/16" WIDE X .025 THICK COPPER STRIPS.
(LENGTHS AS SHOWN)

SUPPORT BARS ~ GLASS BONDED MICA.

ISSUE	ITEM	CHANGED FROM	DATE	CH. NO.	DRAFTS	CHECKER	ENG. APP.
H	2	SUPPORT BAR DIM WAS 5/32	8-9-66	16718	RME		
G	1	TOL. ON 4 3/16 WAS ±0 -1/16	8-26-64	12233	AMB		
F	1	DIM 4 3/16 ± 1/16 ADDED	2-10-64	10866	A.M.		
E	1	SEE EMN #10866	11-23-62	7434			
D	1	DIMS CLARIFIED	5-15-62	6712			
C	3	38 WAS 40°	4-4-62	6588			
B	1	6-1/2 DIM. WAS 6 (STRAP G)	1-4-62	6144			
A	1	5-1/2 DIM. WAS 4-1/2 (STRAP F)	7-25-61	5310			
		15/32 DIM. WAS 1/2 (BAR 3)					
		Strap Mtg. Pictorial Clarified					
		BAR #3 REVERSED					

TOLERANCES		SCALE: FULL (Do not scale)	
ALL OTHERS	DEC. DIM. ± FRAC. DIM. ± ANGULAR DIM. ±	DRILL, PUNCH, COMMERCIAL STOCK SIZES AND MANUFACTURERS TOLERANCES ARE NOT INCLUDED.	

REQ. PER UNIT	MODEL	PROJECT NO.	ASSY. NO.	DATE
1	RFD-1,1A	PALIK		6-29-59
	USED ON			

REQ. ITEM	PART NO.	DESCRIPTION	SYMBOL
3" 1	PX-370-2-7	INSULATION, SLEEVING, TEFLON	
REF ~ E.F. JOHNSON CO.			
SEE SPEC.		THE TECHNICAL MATERIEL CORP. MAMARONECK, NEW YORK	
STOCK SIZE			
SEE SPEC.		CL 174 ASSEMBLY (TANK COIL LOW FREQ.)	
MATERIAL		John C. Biele	
WEIGHT PER PC.		DRAWN	
TYPE & TEMPER		ELEC. DES. APP.	
HEAT TREAT. SPEC.		MECH. DES. APP.	
CHECKED		FINAL APPROVAL	
SEE NOTE		A-1727 H	
FINISH & SPEC. NO.			