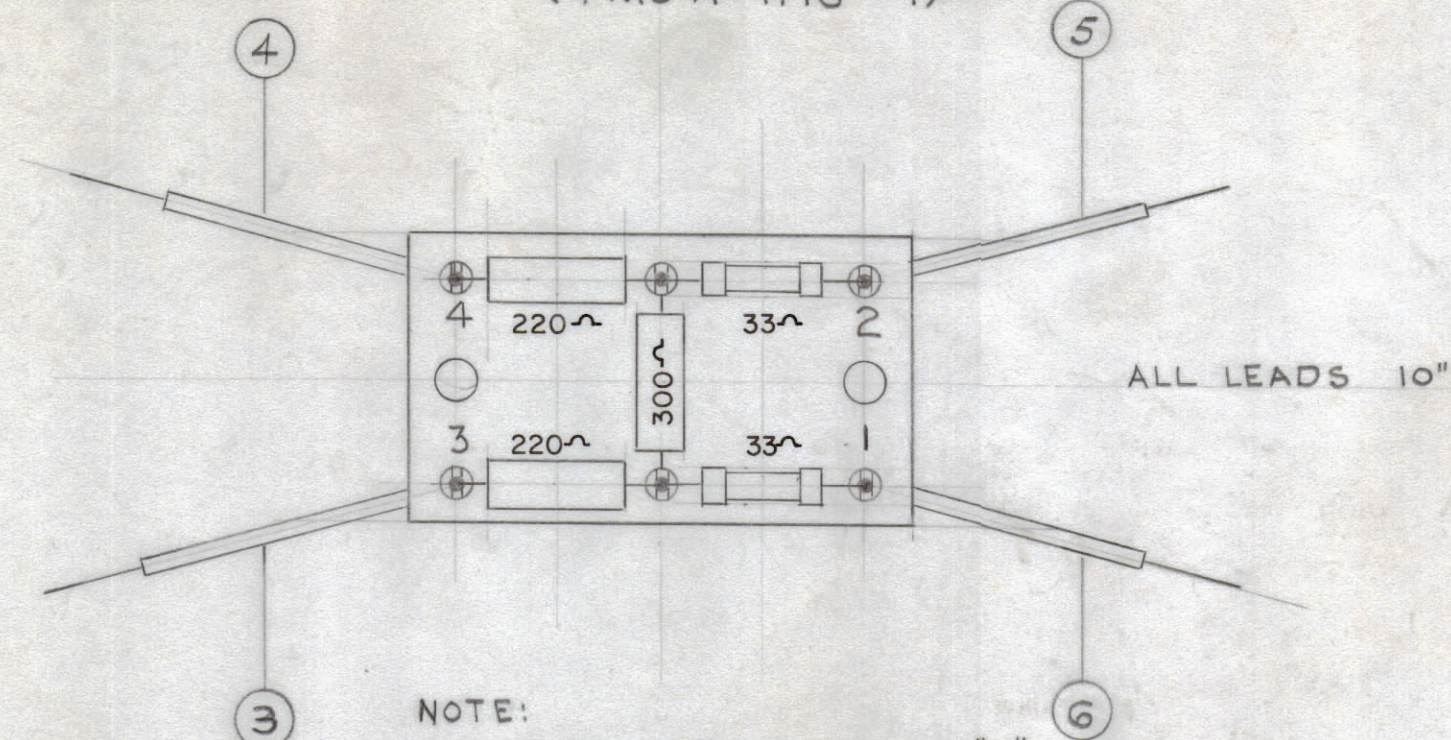


IF IT IS FOUND DESIRABLE TO CHANGE ANY TOLERANCE OR OTHER DETAIL SPECIFIED ON THIS DRAWING NOTIFY THE PURCHASER PROMPTLY.

MAXIMUM ALLOWABLE TOLERANCES HAVE BEEN DETERMINED AND DEVIATIONS WILL BE CAUSE FOR REJECTION. REMOVE ALL BURRS AND SHARP EDGES.

### PAD - A

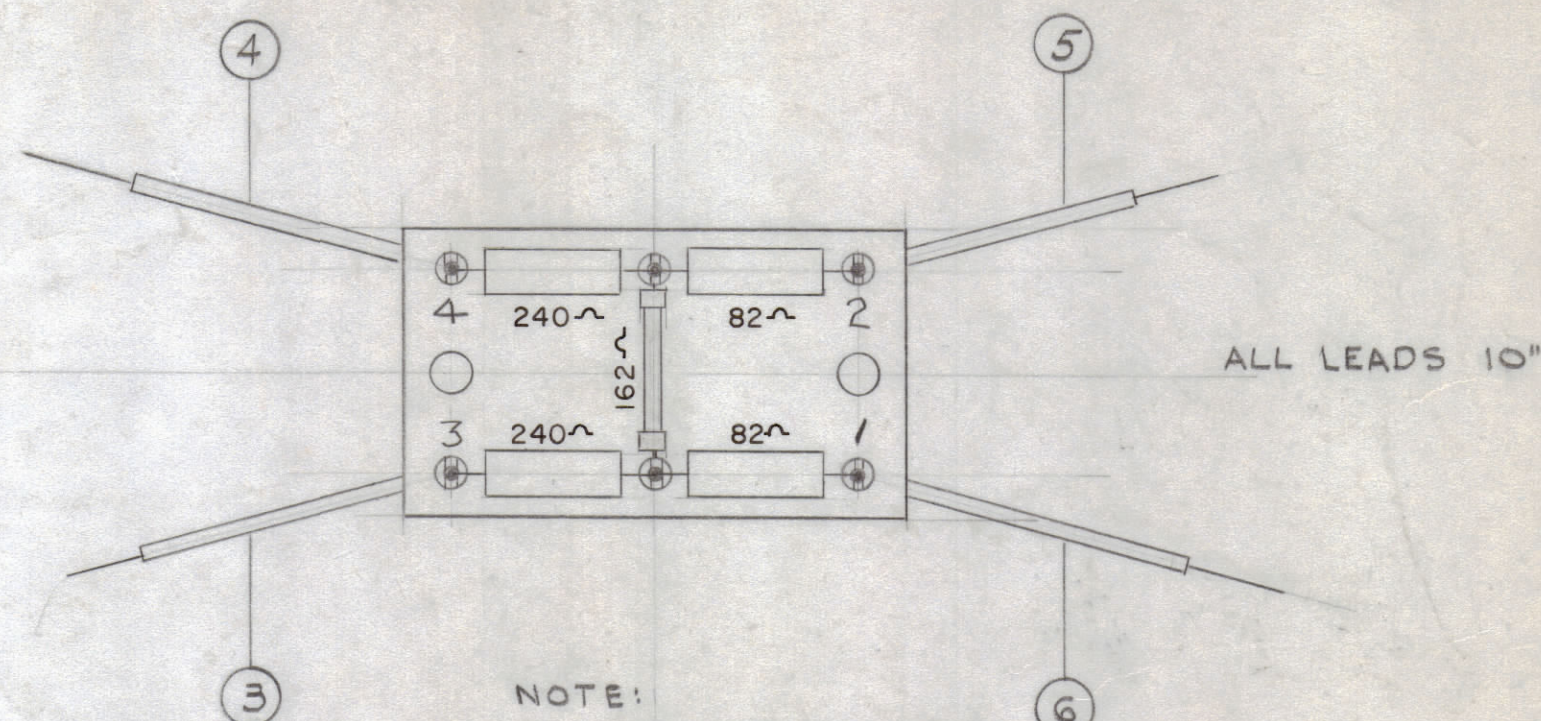
(TMC A-1718-1)



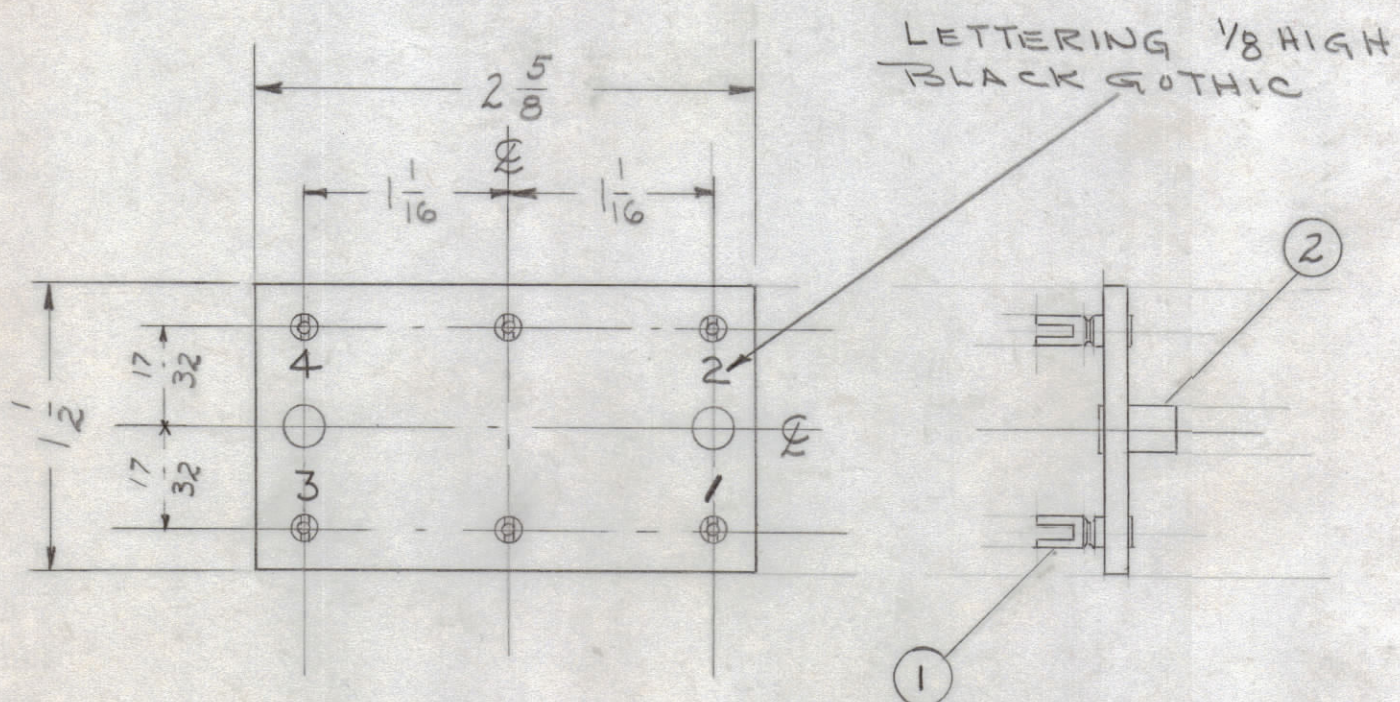
NOTE:  
RESISTORS FOR PAD "A"  
ARE CARBON TYPE ±1% 0.5W.  
TRIM # STRIP ENDS 3/4"

### PAD - B

(TMC A-1718-2)



NOTE:  
RESISTORS FOR  
PAD "B" ARE CARBON  
TYPE ±1% 0.5W  
TRIM # STRIP ENDS 3/4"



A-NO. 33 DR. (.113D) 6 REQ'D.  
B-NO. 12 DR. (.189D) 2 REQ'D.

WIRE CHART				
PADS	ITEM 3	ITEM 4	ITEM 5	ITEM 6
PAD - A	MWC-22(7)U5	MWC 22(7)U0	MWC 22(7)U6	MWC 22(7)U2
PAD - B	MWC-22(7)U95	MWC 22(7)U90	MWC 22(7)U96	MWC 22(7)U92

NOTE:  
RESISTORS TO BE SUPPLIED  
BY WESTERN ELECTRIC.

A-1718

6	SEE CHART	WIRE, INSULATED (SIZE 22)
5	"	" " "
4	"	" " "
3	"	WIRE, INSULATED (SIZE 22)
2	TE-108-13	STAND OFF, RIVET TYPE
1	TE-109-3	TERMINAL

REQ. ITEM	PART NO.	DESCRIPTION	SYMBOL
1/8		THE TECHNICAL MATERIEL CORP. MAMARONECK, NEW YORK	
PHENOLIC		TERMINAL BOARDS	
MATERIAL		WEIGHT PER PC.	
XXXXP		PADS A-B	
TYPE & TEMPER		DRAWN	ELÉC. DES. APP. MECH. DES. APP.
HEAT TREAT. SPEC.		CHECKED	FINAL APPROVAL
NATURAL		A1718	
FINISH & SPEC. NO.			

ISSUE	ITEM	CHANGED FROM	DATE	CH. NO.	DRAFTS	CHECKER	ENG. APP.
TOLERANCES		SCALE:					
ALL OTHERS	DEC. DIM. ± FRAC. DIM. ± ANGULAR DIM. ±	DRILL, PUNCH, COMMERCIAL STOCK SIZES AND MANUFACTURERS TOLERANCES ARE NOT INCLUDED.					

REQ. PER UNIT	MODEL	PROJECT NO.	ASSY. NO.	DATE
USED ON				