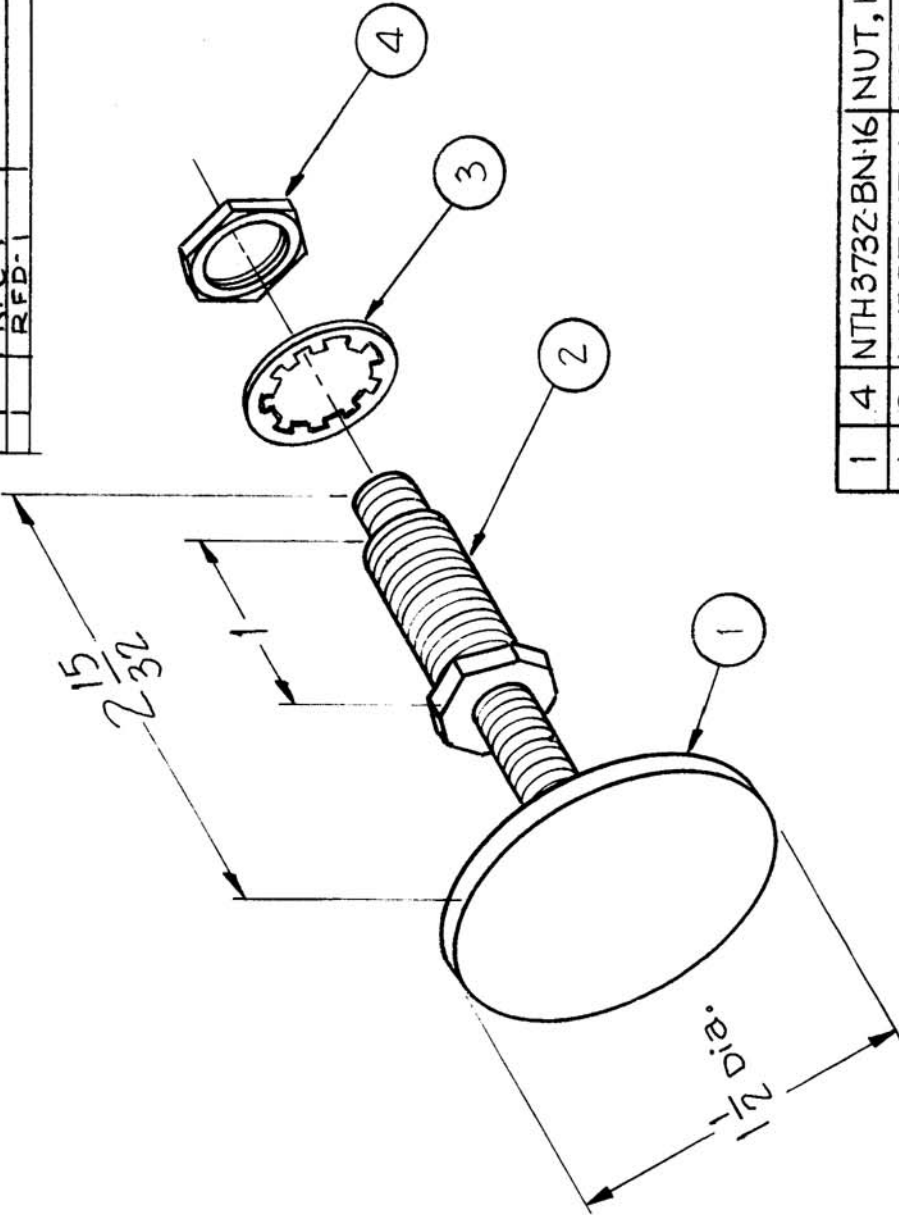


A-1717 A

| REQ. PART. UNIT | M DEL | ASSY. NO. | DATE |
|-----------------|-------|-----------|----------|
| 1 | RFB-1 | | 5-27-59 |
| | RFC-1 | | 11-22-60 |
| | RFD-1 | | 12-21-60 |



| | | | |
|---|---|---------------|-------------------------------|
| 1 | 4 | NTH3732-BN:16 | NUT, HEXAGON (Double Chamfer) |
| 1 | 3 | LWI 37 MRN | LOCKWASHER, INTERNAL TOOTH |
| 1 | 2 | BB-114 | BUSHING, NEUTRALIZING |
| 1 | 1 | A-1338 | NEUTRALIZER, PLATE ASSY |

| | | | |
|--|----------|-------------|----------------|
| REQ. ITEM | PART NO. | DESCRIPTION | SYMBOL |
| THE TECHNICAL MATERIEL CORP. MAMARONECK, NEW YORK | | | |
| AX-132 ASSEMBLY (NEUTRALIZING PLATE ASS'Y) | | | |
| J.C. BIELE | Drawn | Checked | Final Approval |
| J.C. BIELE | Drawn | Checked | Final Approval |
| FINISH & SPEC. NO. | | | |
| ELEC. DES. APP. MECH. DES. APP. | | | |

| | | | | | | |
|------------|------------------------------|----------|---------|--------|---------|-----------|
| ISSUE ITEM | CHANGED FROM | DATE | CH. NO. | DRAFTS | CHECKER | ENG. APP. |
| A 1 | NTH2520 BN14 (Items Deleted) | 12-21-60 | 3780 | | RU | JCB |

TOLERANCES
 DEC. DIM. ±
 FRAC. DIM. ±
 ANGULAR DIM. ±

SCALE:
 MAXIMUM ALLOWABLE TOLERANCES HAVE BEEN DETERMINED AND ANY DEVIATIONS WILL BE CAUSE FOR REJECTION. REMOVE ALL BURRS AND SHARP EDGES