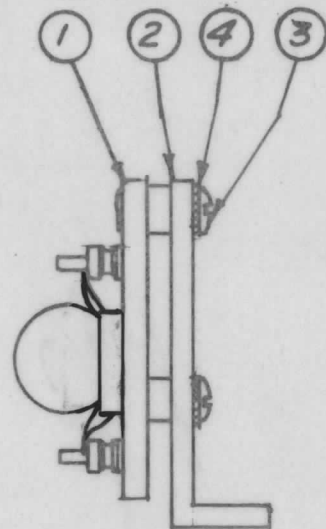
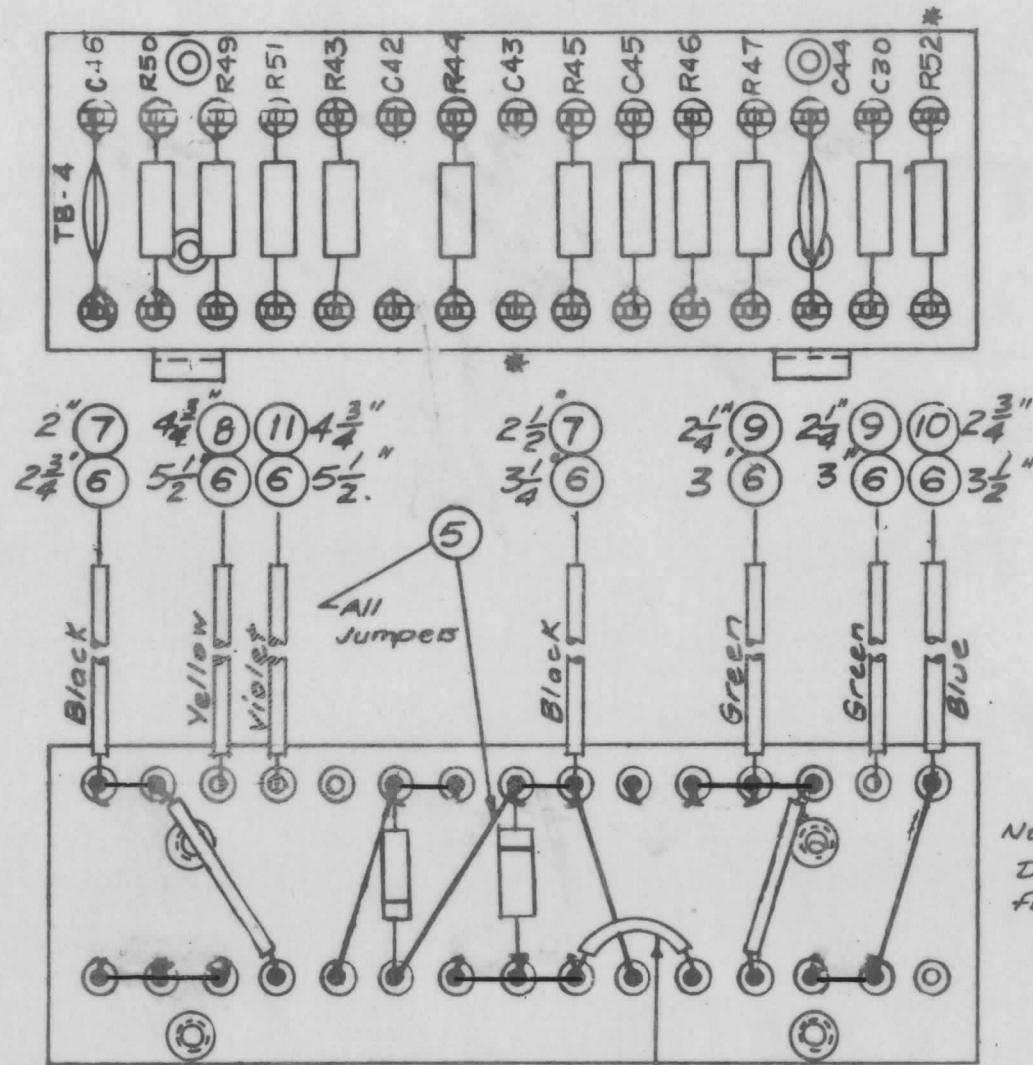


A-1789 C

Stamping to be $\frac{1}{8}$ " high black Gothic,
Stamp before Ass'y. of components.

MARKING PROCESS: AS PER TMC SPECIFICATION S-727



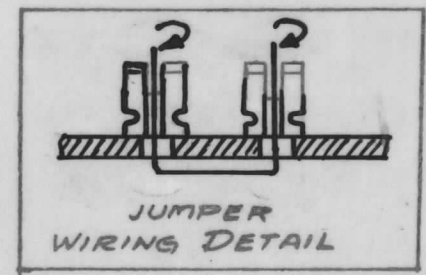
1	26	RC20GF274K	RESISTOR FIXED COMP.	R45
1	25	RC20GF684K	RESISTOR FIXED COMP.	R44
X	24	BS-100	Solder, Soft	
1	23	RC20GF563K	Resistor, Fixed, Comp.	R52
1	22	RC20GF333K		R51
1	21	RC20GF152K		R50
1	20	RC20GF181K		R49
1	19	RC20GF823K		R47
1	18	RC20GF124K		R46
1	17	RC20GF474K	Resistor, Fixed, Comp.	R43.
1	16	CC-100-15	Capacitor, Fixed, Ceramic	C46
1	15	CC215L220J		C45
1	14	CC-100-9		C44
2	13	CN-106C-1003J	CAPACITOR, FIXED, MYLAR	C43, C42
1	12	CC32CH101J	Capacitor, Fixed, Ceramic	C30
4 $\frac{3}{4}$ "	11	PX-104-9-.034	Insulation, Sleeving (Size 20)	Violet
2 $\frac{3}{4}$ "	10	PX-104-6-.034		Blue
4 $\frac{1}{2}$ "	9	PX-104-4-.034		Green
4 $\frac{1}{2}$ "	8	PX-104-2-.034		Yellow
7 $\frac{1}{4}$ "	7	PX-104-1-.034	Insulation, Sleeving (Size 20)	Black
26 $\frac{1}{2}$ "	6	WL-100-7	Wire, Buss (Size 22)	
X	5	WL-100-8	Wire, Buss (Size 24)	
4	4	LWE06MRC	Lockwasher, Ext.	
4	3	SCBS0632BC6	Screw, Machine	
2	2	MS-1321	Bracket, Angle, Term. Bd.	
1	1	A-1573	Terminal Bd. No. 4 Sub-Ass'y.	

* Do Not Solder This End of C43 & R52

NOTE: Assemble Foil Wound Condensers As Shown

5 All Insulated Jumpers
BIK. 7

Note: Brackets, item 2, Deleted from this view for Wiring Clarity.



C	3	JUMPER WIRING & COMP. DET. REV.	11.9.64	12840	bb	@	
-B	1	ITEM 21 WAS RC20GF102K	8-24-60	2863	RL	903	JHE
A	1	ITEM 26 WAS RC20GF154K	3/29/59	1707	HB	JHE	JHE

TOLERANCES		SCALE:	
DEC. DIM. ±		MAXIMUM ALLOWABLE TOLERANCES HAVE BEEN DETERMINED AND ANY DEVIATIONS WILL BE CAUSE FOR REJECTION. REMOVE ALL BURRS AND SHARP EDGES	
FRAC. DIM. ±			
ANGULAR DIM. ±			

1	MSR-3-a			10-26-59	
REQ. PER UNIT	MODEL	PROJECT NO.	ASS'Y. NO.	DATE	USED ON

REQ. ITEM	PART NO.	DESCRIPTION	SYMBOL
THE TECHNICAL MATERIEL CORP. MAMARONECK, NEW YORK			
TERMINAL BOARD NO. 4			
FINAL ASS'Y. & STAMPING (MSR)			
TYPE & TEMPER		HEAT TREAT. SPEC.	DRAWN
FINISH & SPEC. NO.		ELEC. DES. APP.	MECH. DES. APP.
		A-1789 C	