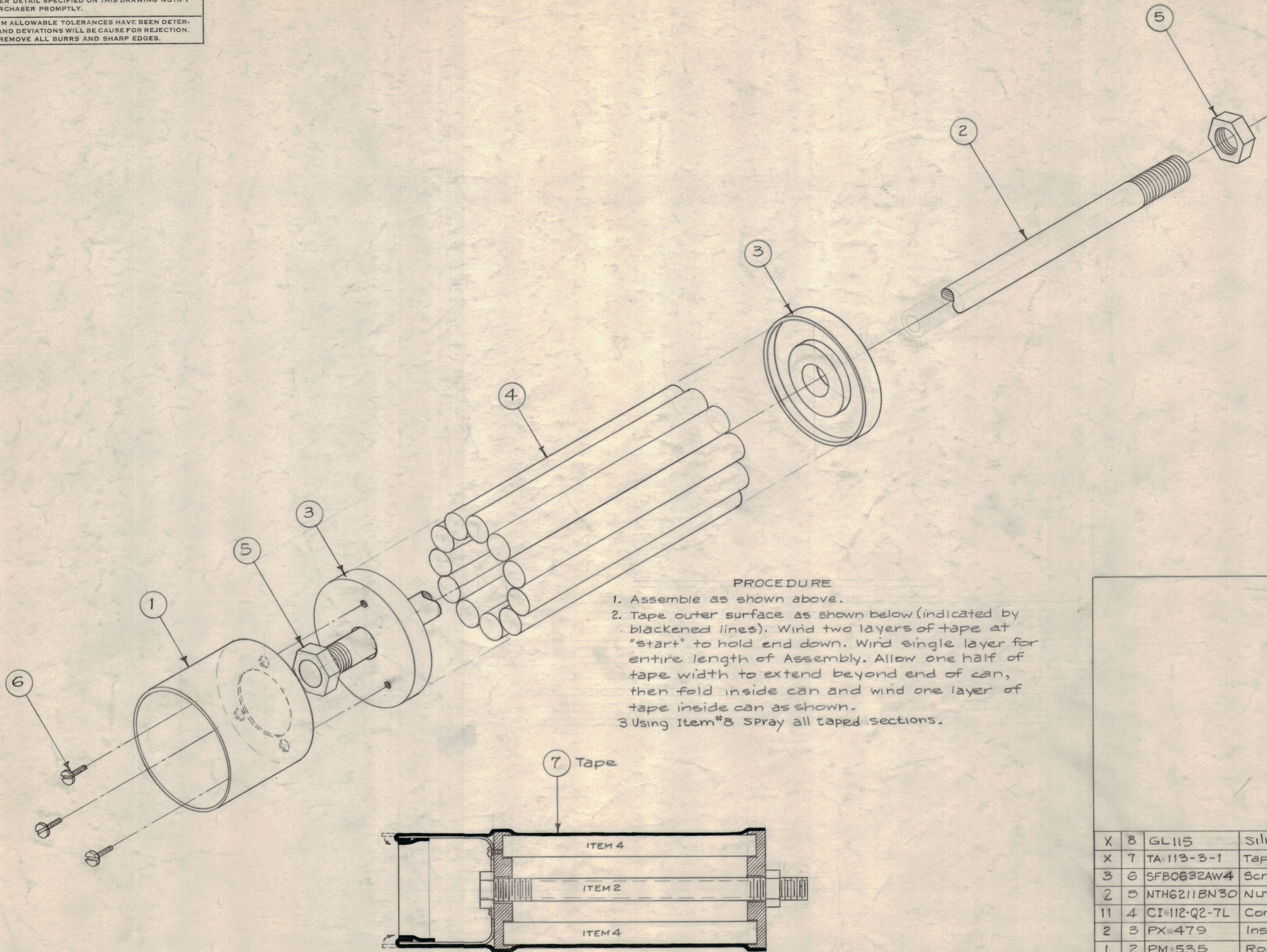


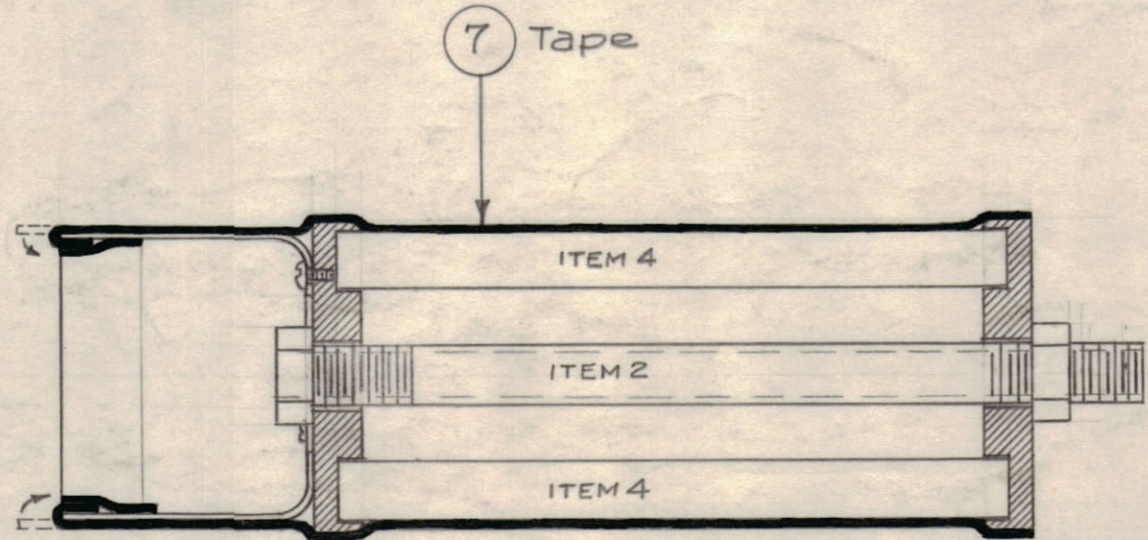
IF IT IS FOUND DESIRABLE TO CHANGE ANY TOLERANCE OR OTHER DETAIL SPECIFIED ON THIS DRAWING NOTIFY THE PURCHASER PROMPTLY.

MAXIMUM ALLOWABLE TOLERANCES HAVE BEEN DETERMINED AND DEVIATIONS WILL BE CAUSE FOR REJECTION. REMOVE ALL BURRS AND SHARP EDGES.



PROCEDURE

1. Assemble as shown above.
2. Tape outer surface as shown below (indicated by blackened lines). Wind two layers of tape at "start" to hold end down. Wind single layer for entire length of Assembly. Allow one half of tape width to extend beyond end of can, then fold inside can and wind one layer of tape inside can as shown.
- 3 Using Item #8 Spray all taped sections.



NOTICE TO PERSONS RECEIVING THIS DRAWING
 THE TECHNICAL MATERIEL CORPORATION claims proprietary right in the material disclosed herein. This drawing is issued in confidence for engineering information only and may not be re-produced or used to manufacture any item shown herein without permission from THE TECHNICAL MATERIEL CORPORATION to the user. This drawing is loaned for mutual assistance and is subject to recall at any time.
 Property of:
 THE TECHNICAL MATERIEL CORPORATION
 MAMARONECK, NEW YORK

A 1686 B

X	8	GL115	Silicone Resin lacquer	
X	7	TA 113-3-1	Tape, Glass	
3	6	SFB0632AW4	Screw, Self Tapping	
2	5	NTH6211BN30	Nut, Hex, Jam Type	
11	4	CI-112-Q2-7L	Core, Feramic	
2	3	PX-479	Insulator, Core	
1	2	PM-535	Rod, Center	
1	1	BX-174	Can, Core	

REQ. ITEM	PART NO.	DESCRIPTION	SYMBOL
THE TECHNICAL MATERIEL CORP. MAMARONECK, NEW YORK			
AX-120 ASS'Y.			
(ANT. TUNER CORE ASS'Y.)			
MATERIAL		WEIGHT PER PC.	
TYPE & TEMPER		DRAWN	ELEC. DES. APP. MECH. DES. APP.
HEAT TREAT. SPEC.		CHECKED	FINAL APPROVAL
FINISH & SPEC. NO.		A 1686 B	

B	1	PROCEDURE 3, & ITEM 8 ADDED	3-23-44	15992				
A	1	QUANT. item 5 was 1.	12/19/60	3749				
ISSUE	ITEM	CHANGED FROM	DATE	CH. NO.	DRAFTS	CHECKER	ENG. APP.	
TOLERANCES			SCALE: 1/2					
ALL OTHERS	DEC. DIM. ±	DRILL, PUNCH, COMMERCIAL STOCK SIZES AND MANUFACTURERS TOLERANCES ARE NOT INCLUDED.						
	FRAC. DIM. ±							
	ANGULAR DIM. ±							

1	AX-120	PROJECT NO.	ASSY. NO.	9-7-59
REQ. PER UNIT	MODEL	PROJECT NO.	ASSY. NO.	DATE
USED ON				