

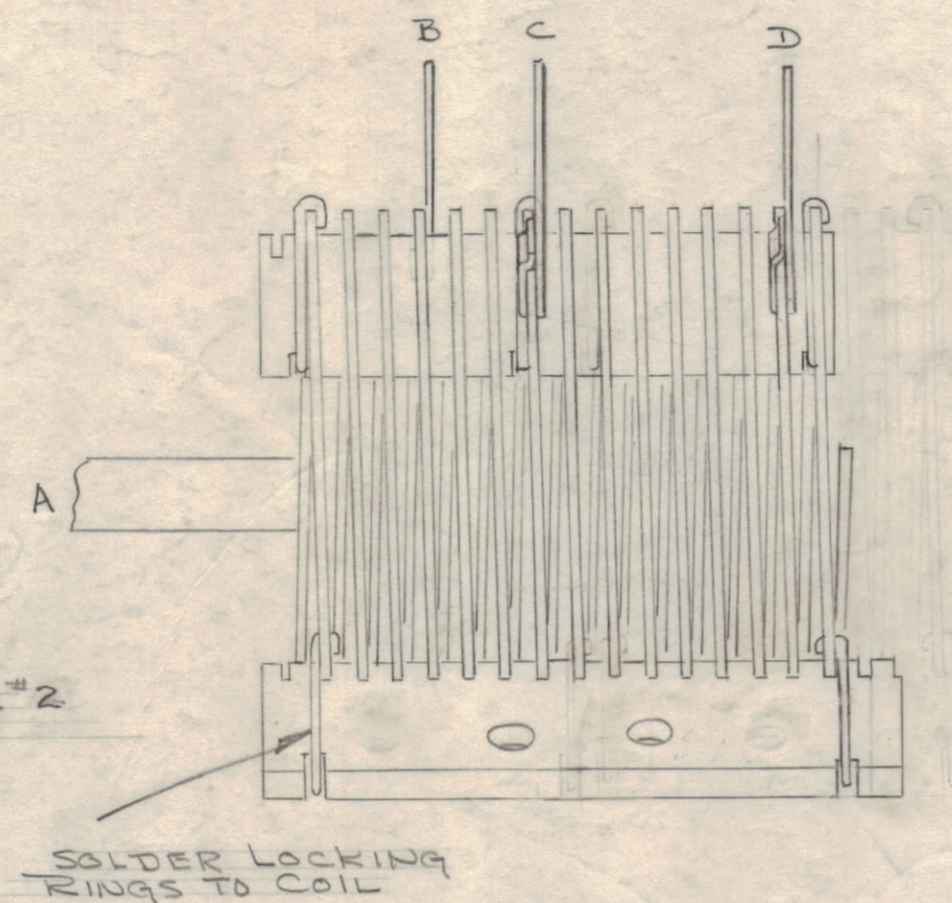
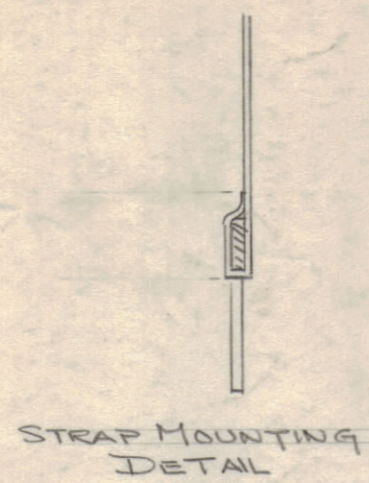
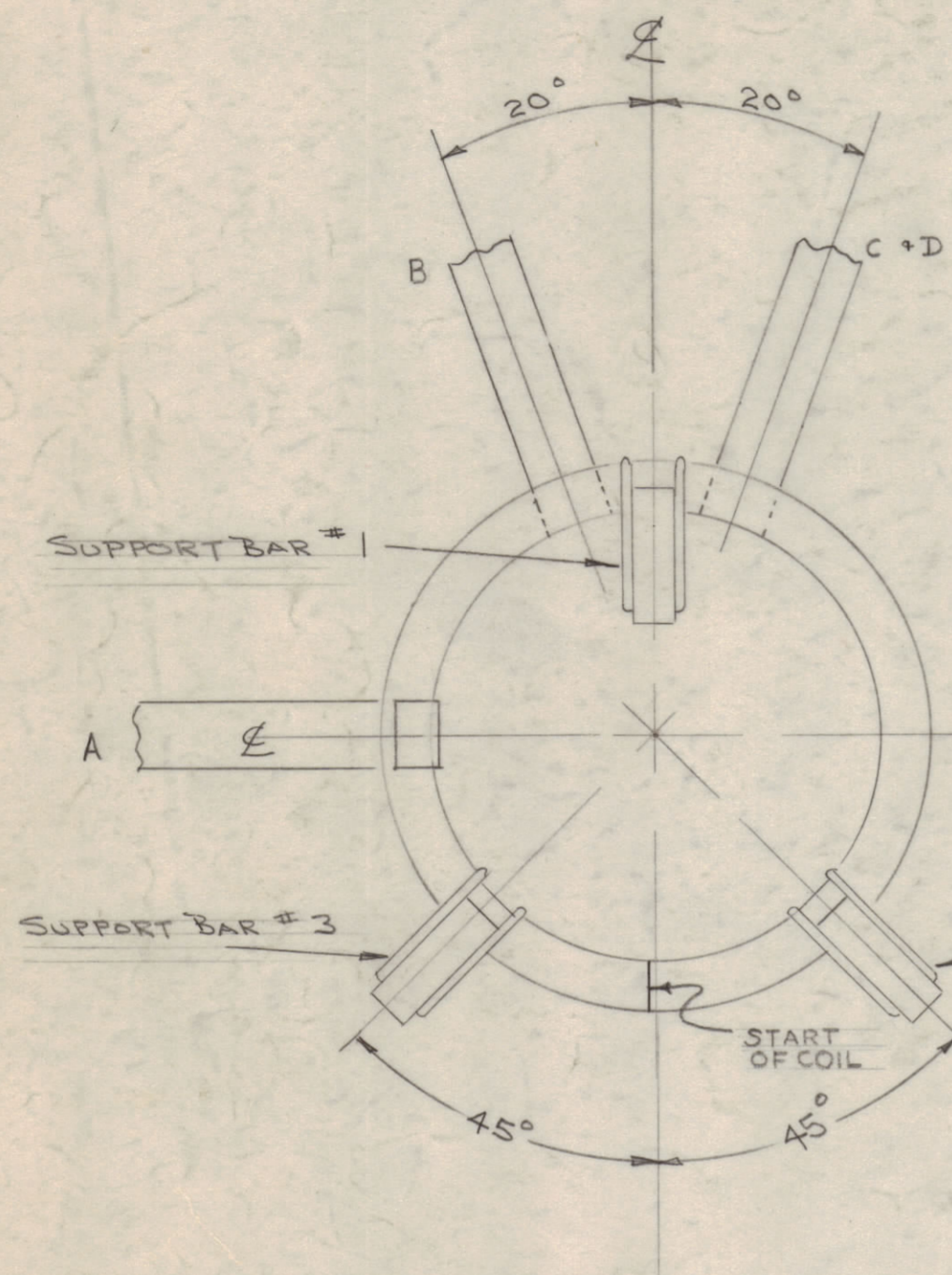
IF IT IS FOUND DESIRABLE TO CHANGE ANY TOLERANCE OR OTHER DETAIL SPECIFIED ON THIS DRAWING NOTIFY THE PURCHASER PROMPTLY.

MAXIMUM ALLOWABLE TOLERANCES HAVE BEEN DETERMINED AND DEVIATIONS WILL BE CAUSE FOR REJECTION. REMOVE ALL BURRS AND SHARP EDGES.

NOTICE TO PERSONS RECEIVING THIS DRAWING

THE TECHNICAL MATERIEL CORPORATION claims proprietary right in the material disclosed hereon. This drawing is issued in confidence for engineering information only and may not be reproduced or used to manufacture anything shown hereon without permission from THE TECHNICAL MATERIEL CORPORATION to the user. This drawing is loaned for mutual assistance and is subject to recall at any time.

Property of:
THE TECHNICAL MATERIEL CORPORATION
MAMARONECK, NEW YORK



- A - 1st Turn - 5" Long
- B - 4th Turn - 4" Long
- C - 7th Turn - 4" Long
- D - 14th Turn - 5" Long

NOTE
STRAP LENGTHS SHOWN INCLUDE 7/8" LENGTH REQUIRED TO SOLDER TO COIL. (SEE STRAP MOUNTING DETAIL ABOVE.) STRAPS MAY BE BENT TO FACILITATE EASE OF HANDLING. (NO SHARP BENDS.)

A-1656 A

SPECIFICATIONS:

COILS: 3" OD x 2 1/2" I.D. COPPER STRIP
15 1/4 TURNS, C.W.
STRAPS: 5/16" WIDE x .025 THICK COPPER STRIPS
LENGTHS AS SHOWN.
NOTE: STRAPS TO BE SOLDERED TO COIL WITH SILVER SOLDER AS SHOWN IN DETAIL. COIL & STRAP ASSY TO BE SILVER PLATED (.001) THICK.
SUPPORT BARS: GLASS BONDED MICA
TOTAL INDUCTANCE: 10.9 μ hy

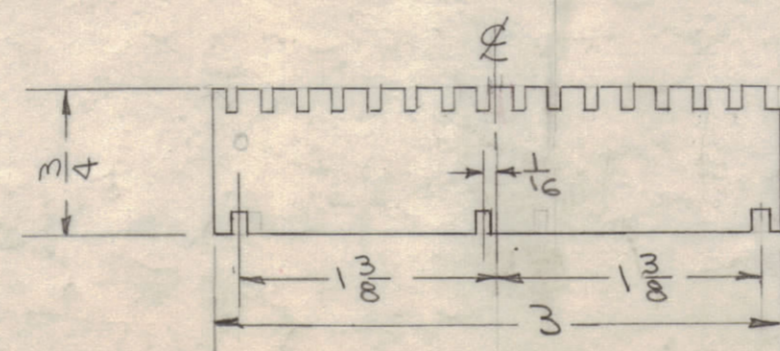
Note:
For Mfg. by TMC:
2 ea. of CL-142 can be made from 1 CL-118-31.
USE TMC CL-118-31

REF: E.F. JOHNSON

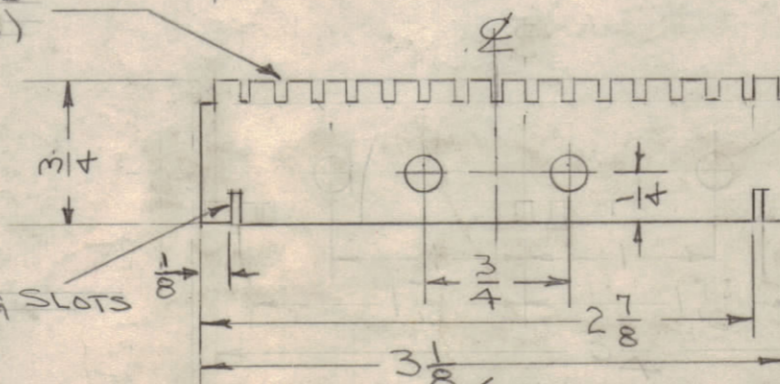
NOTE:
SUPPORT BAR COIL SLOTS & LOCKING RING SLOTS TO BE THE SAME AS JOHNSON TYPE 232

COIL SLOTS (SEE NOTE)

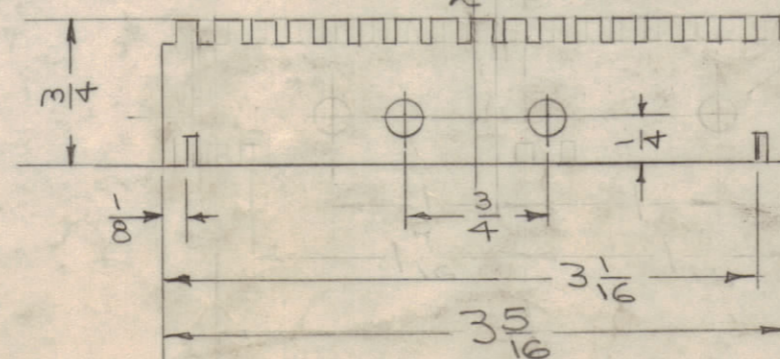
LOCKING RING SLOTS (SEE NOTE)



SUPPORT BAR NO 1



SUPPORT BAR NO 2
2 HOLES 3/16" DIA



SUPPORT BAR NO 3
2 HOLES 3/16" DIA

REQ. ITEM	PART NO.	DESCRIPTION	SYMBOL
		THE TECHNICAL MATERIEL CORP. MAMARONECK, NEW YORK	
STOCK SIZE		CL-142-ASSY.	
MATERIAL		(COIL, RE, FIXED)	
WEIGHT PER PC.			
TYPE & TEMPER			
HEAT TREAT. SPEC.		CHECKED	FINAL APPROVAL
FINISH & SPEC. NO.			A-1656 A

ISSUE ITEM	CHANGED FROM	DATE	CH. NO.	DRAFTS	CHECKER	ENG. APP.
A 1	Referenced CL-118-31	11-13-51	1541	DM	ASD	AK

TOLERANCES		SCALE:
ALL OTHERS	DEC. DIM. ± FRAC. DIM. ± ANGULAR DIM. ±	DRILL, PUNCH, COMMERCIAL STOCK SIZES AND MANUFACTURERS TOLERANCES ARE NOT INCLUDED.

1	CL-142	RFB-1		
REQ. PER UNIT	MODEL	PROJECT NO.	ASSY. NO.	DATE