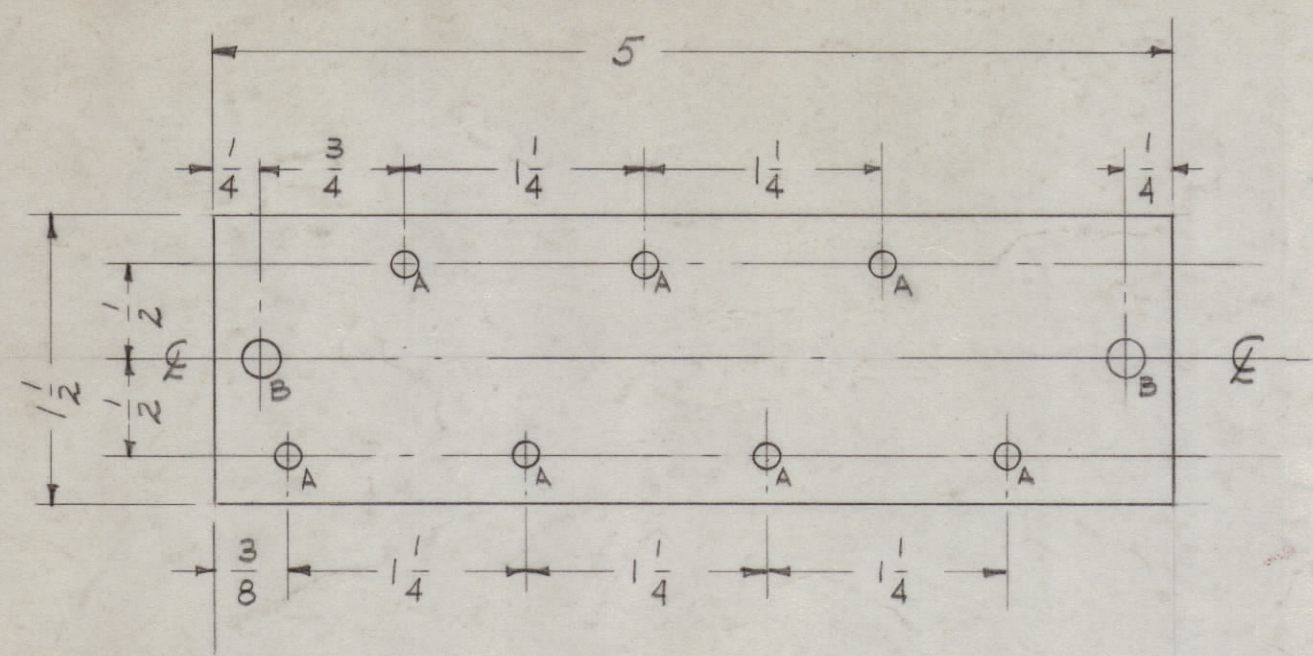


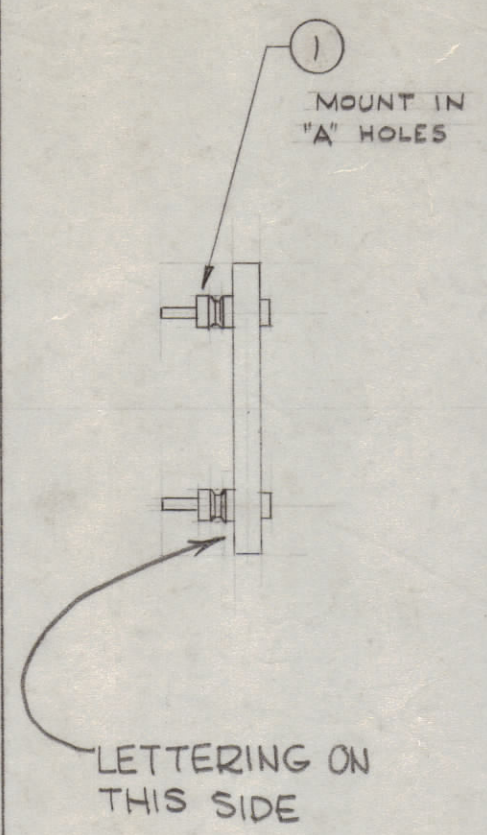
IF IT IS FOUND DESIRABLE TO CHANGE ANY TOLERANCE OR OTHER DETAIL SPECIFIED ON THIS DRAWING NOTIFY THE PURCHASER PROMPTLY.

MAXIMUM ALLOWABLE TOLERANCES HAVE BEEN DETERMINED AND DEVIATIONS WILL BE CAUSE FOR REJECTION. REMOVE ALL BURRS AND SHARP EDGES.

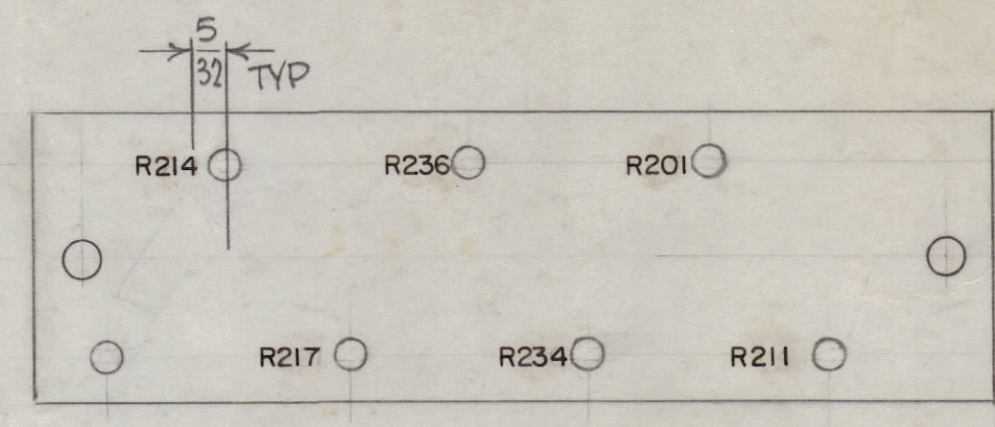


A - 1/8 (.125) 7 REQ'D.
 B - 3/16 (.187) 2 "

STAGE 1 - MACHINING



STAGE 3
MECHANICAL ASSEMBLY



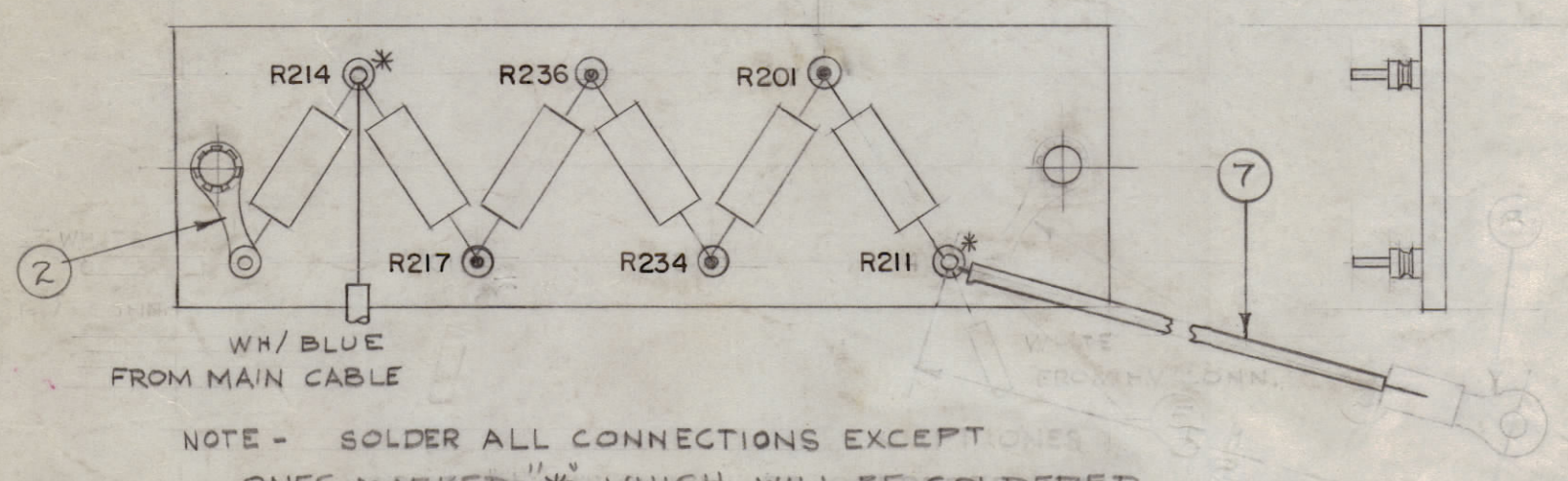
NOTE: MARKING PROCESS: AS PER TMC SPECIFICATION S-727
 ALL LETTERING TO BE 1/8" BLACK GOTHIC.

STAGE 2 - LETTERING

NOTICE TO PERSONS RECEIVING THIS DRAWING

THE TECHNICAL MATERIEL CORPORATION claims proprietary right in the material disclosed herein. This drawing is issued in confidence for engineering information only and may not be reproduced or used to manufacture anything shown hereon without permission from THE TECHNICAL MATERIEL CORPORATION to the user. This drawing is loaned for mutual assistance and is subject to recall at any time.

Property of:
 THE TECHNICAL MATERIEL CORPORATION
 MAMARONECK, NEW YORK



NOTE - SOLDER ALL CONNECTIONS EXCEPT ONES ONES MARKED "*", WHICH WILL BE SOLDERED UPON ASS'Y. OF BOARD INTO UNIT.

STAGE 4 - FINAL ASSEMBLY

A-1655 F

R 211, 201, 234, 236, 217

F	ON PCT. STAGE 3 WAS 2 2 WAS 3 QTY IT. 7 WASX, 00-2 5/82 ADDED ITEM 4 WAS RC 42GF224K	9-27-60	16900	G.D.L.		
E	ITEM 7 WAS HWG 18 (16) US ITEM 8 WAS TE-159-32960	9-19-60	12248	SEG		
D	SOLDERING CLARIFIED	5-2-62	6667	EE		
C	ITEM 7, 5 1/2" WAS 3 1/8	5-22-61	4916	MAS		
B	ON PICTORIAL CABLE WAS CONNECTED TO R217	10/19/59	1444	J.C.B.		
A	ITEM 7 FB ADDED. DWG TITLE CHGD.	7/1/59	1246	16		

ISSUE	ITEM	CHANGED FROM	DATE	CH. NO.	DRAFTS	CHECKER	ENG. APP.
TOLERANCES		SCALE:					
ALL OTHERS	DEC. DIM. ±	DRILL, PUNCH, COMMERCIAL STOCK SIZES AND MANUFACTURERS TOLERANCES ARE NOT INCLUDED.					
	FRAC. DIM. ±						
	ANGULAR DIM. ±						

1	RFC-1			5-2-62
1	RFB-1			3-31-59
REQ. PER UNIT	MODEL	PROJECT NO.	ASSY. NO.	DATE

REQ.	ITEM	PART NO.	DESCRIPTION	SYMBOL
1	7	CA409-144-550	Cable, Insulated	White
x	6	BS-100	SOLDER, SOFT	
x	5	WL100-7	WIRE, BUSS (SIZE 22)	
1	4	RC42GF224J	RESISTOR, FIXED, COMP.	R214
5	3	RC42GF206J	RESISTOR, FIXED, COMP.	
1	2	TE-104-2	TERMINAL, LOCKING	
7	1	TE-109-3	SPLIT TERMINAL LUG	
1/8 THICK		THE TECHNICAL MATERIEL CORP. MAMARONECK, NEW YORK		
PHENOLIC		STOCK SIZE		
MATERIAL		WEIGHT PERFC.		
XXXXP		METERING TERMINAL BD.		
TYPE & TEMPER		DRAWN		
HEAT TREAT. SPEC.		ELEC. DES. APP.		
NATURAL		MECH. DES. APP.		
FINISH & SPEC. NO.		CHECKED		
		FINAL APPROVAL		
		A-1655 F		