

NOTICE TO PERSONS RECEIVING THIS DRAWING

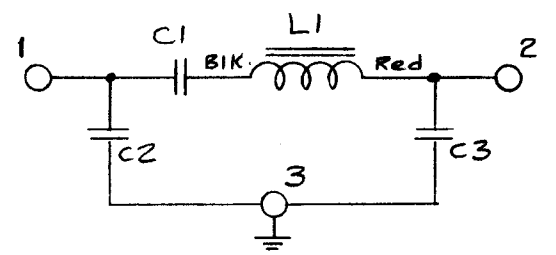
THE TECHNICAL MATERIEL CORPORATION claims proprietary right in the material disclosed hereon. This drawing is issued in confidence for engineering information only and may not be reproduced or used to manufacture anything shown hereon without permission from THE TECHNICAL MATERIEL CORPORATION to the user. This drawing is loaned for mutual assistance and is subject to recall at any time.

Property of:
THE TECHNICAL MATERIEL CORPORATION
MAMARONECK, NEW YORK

PROCEDURE -

1. Mount all Components as shown except coil & Associated Hardware (Indicated by *)
2. Coil Must not be mounted in the fixed position shown until it has been resonated with the other components as per spec. S-417 (Steps II, IV, & V)
3. After completing Step 2, mount coil as shown. NOTE - Coil must be kept with components it was resonated with.
4. Solder All Contacts.
5. Place Coil & Cover Ass'y. into can.
6. Place Top Cover into Can.
7. Solder all around edge of both covers. (Outside surface must be smooth.)
8. Finish as follows:
5114 Zinc Chromate Primer - All Surfaces
5115 Smooth Grey Enamel - Except Terminal End.
9. Stamp Top of Unit with "FX-156", in black Gothic.
10. Refer to S-417, Step VI, for Final Test

SCHMATIC



REQ.	ITEM	PART NO.	DESCRIPTION	SYMBOL
	19			
X	18	BS-100	Solder, Soft	
	7/8"	17 PX-104-1-.022	Insulation, Sleeving (Size 24)	BIK.
	3/4"	16 PX-104-4-.034	Insulation, Sleeving (Size 20)	Grn.
X	15	WL-100-7	Wire, BUSS (Size 22)	
	5/8"	14 PX-100-1-.148	Insulation, Sleeving (Size 7)	BIK.
	2	13 FW-100-2AL	Washer, Flat	
	2	12 GA-140-1N8	Gasket, Neoprene	
	2	11 NTH0632BN8	NUT, Hex.	
	2	10 TE-104-2	Lug, Locking	
	3	9 LWEO6MRN	Lockwasher, Ext.	
	1	8 SCBS0632BN22	Screw, Machine	
	1	7 SCBS0632BN6	Screw, Machine	
	1	6 TE-135-5	Spacer, Threaded, 1" Lg.	
	1	5 TM-117-1	Terminal Strip	
	1	4 CL-156	Coil, AF	L1
	2	3 CNI08C1503J	Capacitor, Fixed, Mylar	C2, C3
	1	2 CM30E622G	Capacitor, Fixed, Mica	C1
	1	1 BX-175	Case & Covers	

THE TECHNICAL MATERIEL CORP. MAMARONECK, NEW YORK			
STOCK SIZE			
MATERIAL			
TYPE & TEMPER	HEAT TREAT. SPEC.	DRAWN	CHECKED
		16/26/59	Hle
		RWB	DB
			FINAL APPROVAL
			A-1651 A
FINISH & SPEC. NO.		ELEC. DES. APP.	MECH. DES. APP.

ISSUE ITEM	CHANGED FROM	DATE	CH. NO.	DRAFTS	CHECKER	ENG. APP.
A 1	Item 3 Part Number added	11/11/59	1559	DM	Hle	CG
TOLERANCES		SCALE: ---				
DEC. DIM. ±	MAXIMUM ALLOWABLE TOLERANCES HAVE BEEN DETERMINED AND ANY DEVIATIONS WILL BE CAUSE FOR REJECTION.					
FRAC. DIM. ±	REMOVE ALL BURRS AND SHARP EDGES					
ANGULAR DIM. ±						

1	FX-156	TTG	2-26-59
REQ. PER UNIT	MODEL	PROJECT NO.	DATE
USED ON			