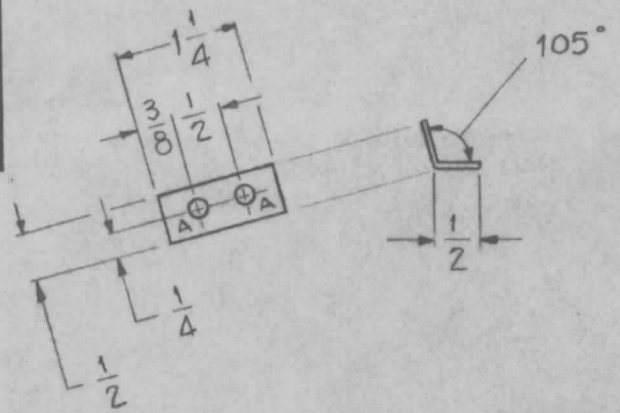
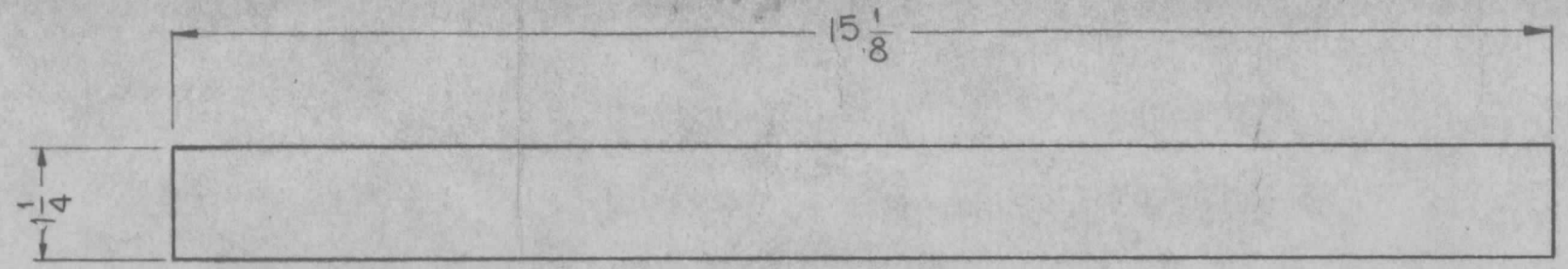


A-1647

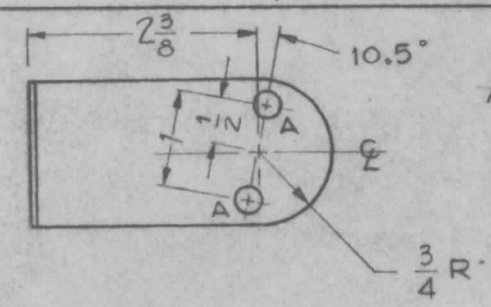
A - 3/16 (.187) DIA 2 Req.



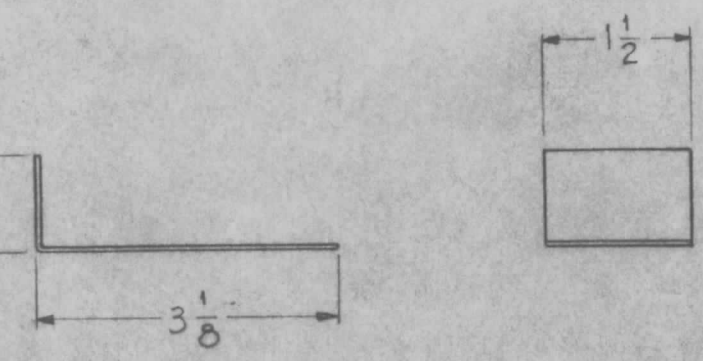
MAT'L - BRASS, .064, FINISH - S-404 IRIDITE  
BRACKET, SUPPORT TUBE STRAP  
(2 REQ. PER UNIT)



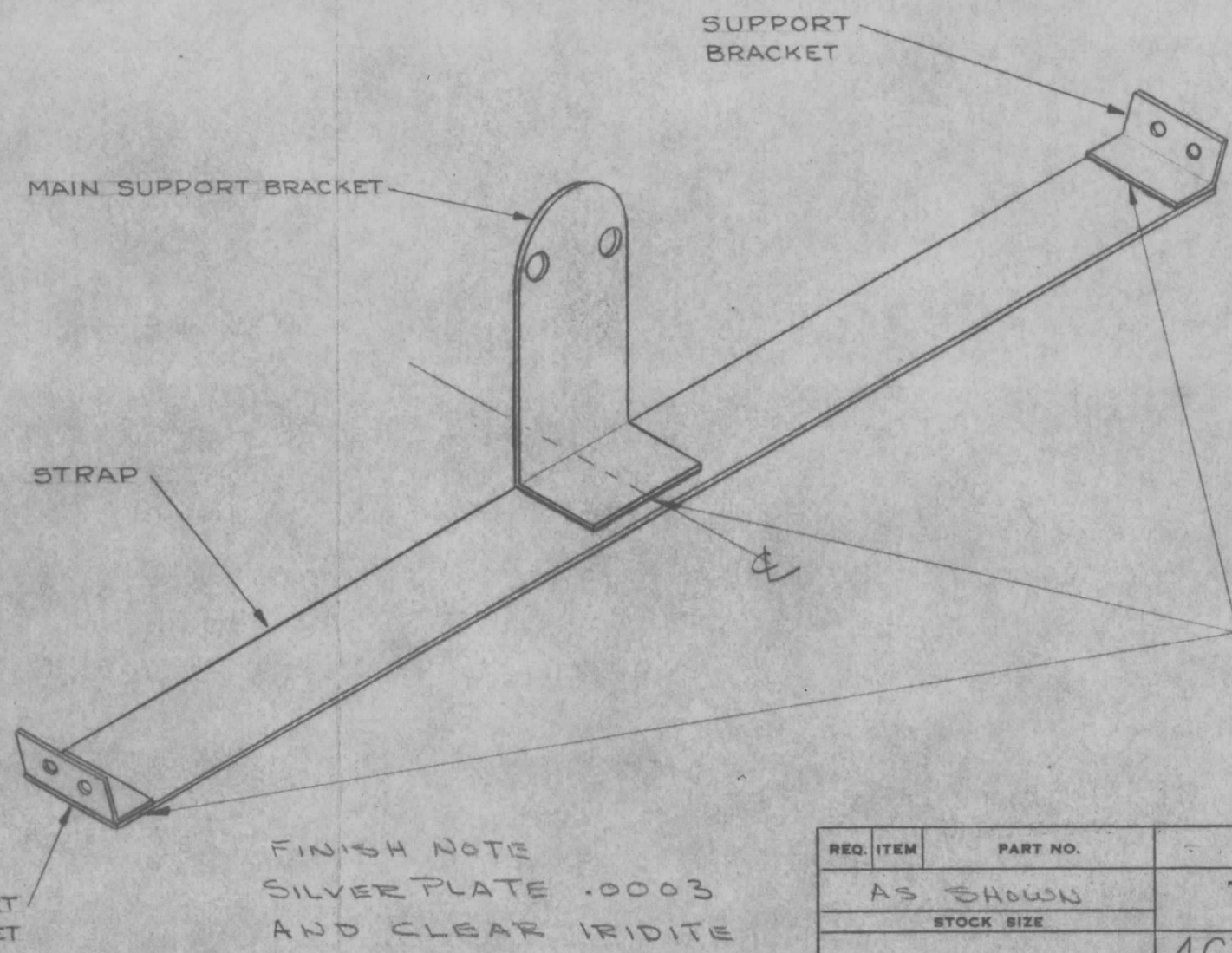
MAT'L SOFT COPPER, .032,  
STRAP  
(1 REQ. PER UNIT)



A - 9/32 (.281) DIA 2 Req.



MAT'L - BRASS, .064, FINISH S-404 IRIDITE  
BRACKET, MAIN SUPPORT TUBE STRAP  
(1 REQ. PER UNIT)



NOTE -  
THIS DWG.  
SHALL NOT  
BE ISSUED  
USE MS-1848  
(New # for This Dwg.)  
  
FILE  
IN  
ORIG. FILE

FINISH NOTE  
SILVER PLATE .0003  
AND CLEAR IRIDITE

ISSUE	ITEM	CHANGED FROM	DATE	CH. NO.	DRAFTS	CHECKER	ENG. APP.
TOLERANCES			SCALE:				
DEC. DIM. ±			MAXIMUM ALLOWABLE TOLERANCES HAVE BEEN DETERMINED AND ANY DEVIATIONS WILL BE CAUSE FOR REJECTION.				
FRAC. DIM. ±			REMOVE ALL BURRS AND SHARP EDGES				
ANGULAR DIM. ±							

1	GPT 10K	RF DBCK		2 - 20 - 59
REQ. PER UNIT	MODEL	PROJECT NO.	ASS'Y. NO.	DATE
USED ON				

REQ. ITEM	PART NO.	DESCRIPTION	SYMBOL
AS SHOWN		THE TECHNICAL MATERIEL CORP. MAMARONECK, NEW YORK	
STOCK SIZE			
AS SHOWN		4CX5000A TUBE STRAP ASSEMBLY	GPT 10K
MATERIAL			
		J.C. BIELE	ARB
		DRAWN	CHECKED
			FINAL APPROVAL
SEE NOTE			
FINISH & SPEC. NO.		ELEC. DES. APP.	MECH. DES. APP.