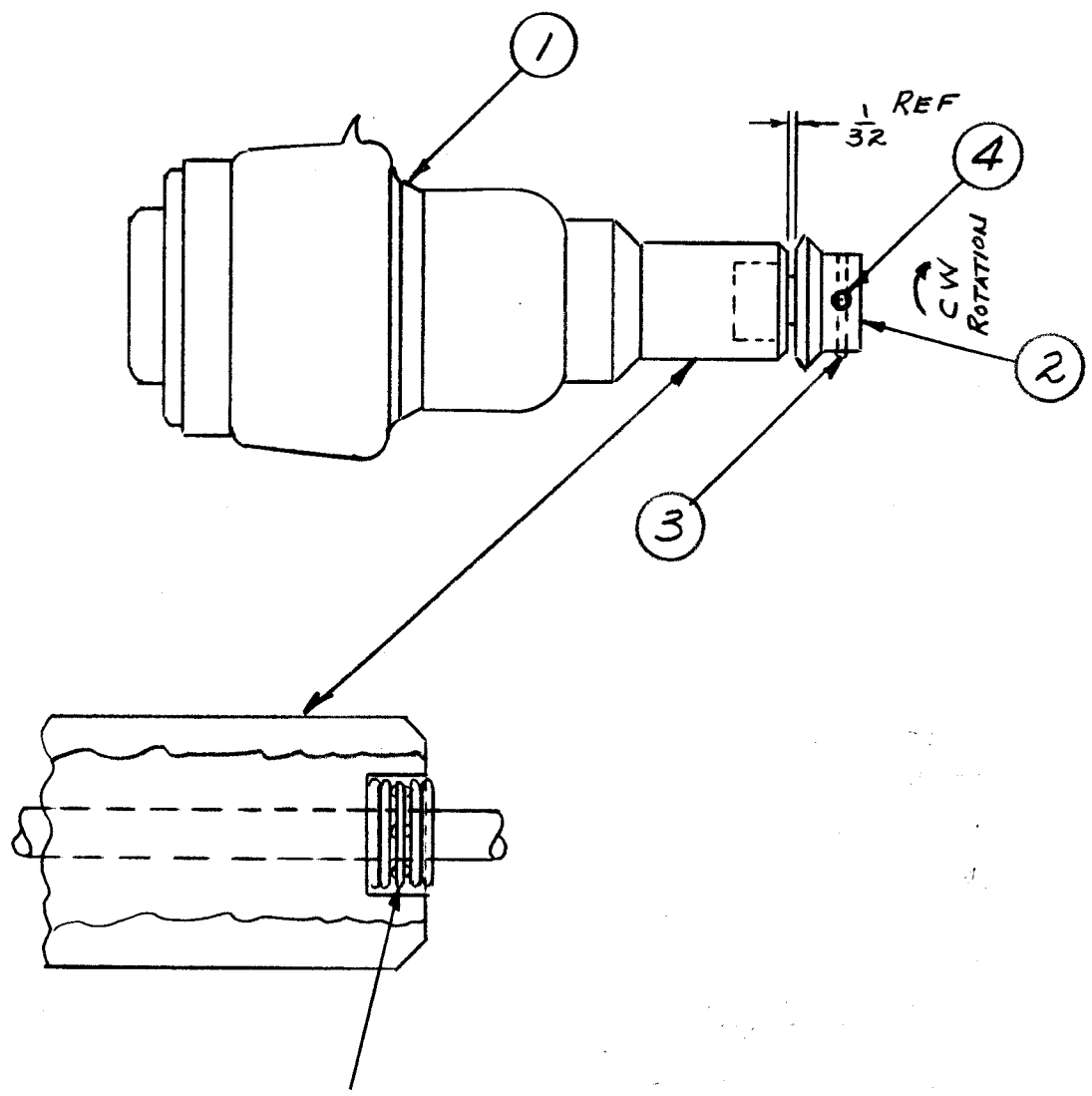
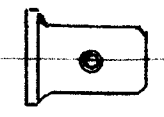


A-1622 A



BEARING WASHER
IN MIDDLE, 2
FLAT WASHERS
ON EACH SIDE.

MFG EXISTING
RETAINING CAP
(STEP 1)



PROCEDURE

1. REMOVE RETAINING CAP & RETURN TO STOCK.
2. ROTATE SHAFT CCW TO LIMIT.
3. BE SURE WASHERS ARE PLACED ON SHAFT IN ORDER SHOWN.
4. PLACE GEAR, ITEM 2, ON SHAFT IN POSITION SHOWN, TIGHTEN SET SCREWS, ITEM 4. NOTE: ONE SET SCREW MUST BE ON FLAT OF SHAFT.
5. DRILL THROUGH GEAR PILOT HOLE WITH #52 DRILL.
6. PIN THROUGH WITH ITEM 3.

NOTICE TO PERSONS RECEIVING THIS DRAWING

THE TECHNICAL MATERIEL CORPORATION claims proprietary right in the material disclosed hereon. This drawing is issued in confidence for engineering information only and may not be reproduced or used to manufacture anything shown hereon without permission from THE TECHNICAL MATERIEL CORPORATION to the user. This drawing is loaned for mutual assistance and is subject to recall at any time.

Property of:
THE TECHNICAL MATERIEL CORPORATION
MAMARONECK, NEW YORK

REQ.	ITEM	PART NO.	DESCRIPTION	SYMBOL
2	4	SLHCO6325P5	SET SCREW	
1	3	PN59-062-16	PIN, SPRING	
1	2	GR-140	GEAR, MITER	
1	1	CB-144	CAPACITOR, VAR., VAC 7-1000mfd	
THE TECHNICAL MATERIEL CORP. MAMARONECK, NEW YORK				
STOCK SIZE				
AM-100 ASS'Y				
MATERIAL				
CAPACITOR, VAR., VAC. W/GEAR				
		aw	JAD	MR
TYPE & TEMPER		HEAT TREAT. SPEC.	DRAWN	CHECKED
			G	
FINISH & SPEC. NO.		ELEC. DES. APP	MECH. DES. APP	
				A-1622 A

ISSUE	ITEM	CHANGED FROM	DATE	CH. NO.	DRAFTS	CHECKER	ENG. APP.
A		ITEM 4 WAS AN 565D6H5	9-27-66	16900	G.D.L.		
TOLERANCES		SCALE: <i>as</i>					
DEC. DIM. ±		MAXIMUM ALLOWABLE TOLERANCES HAVE BEEN DETERMINED AND ANY DEVIATIONS WILL BE CAUSE FOR REJECTION: REMOVE ALL BURRS AND SHARP EDGES					
FRAC. DIM. ±							
ANGULAR DIM. ±							

1	AM-100	RFC-1	11-22-60
REQ. PER UNIT	MODEL	PROJECT NO.	ASSY. NO.
			DATE
USED ON			