

IF IT IS FOUND DESIRABLE TO CHANGE ANY TOLERANCE OR OTHER DETAIL SPECIFIED ON THIS DRAWING NOTIFY THE PURCHASER PROMPTLY.

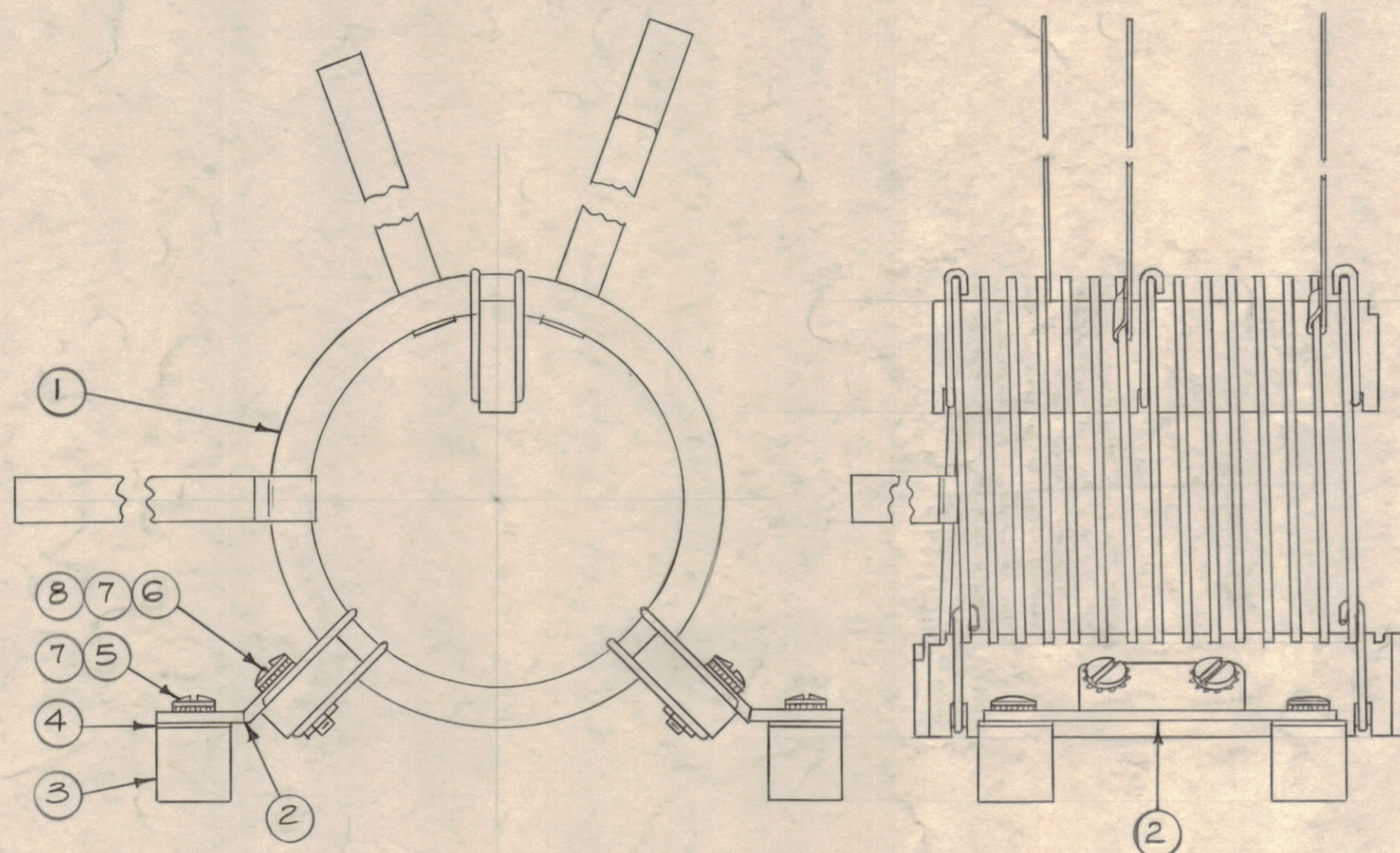
MAXIMUM ALLOWABLE TOLERANCES HAVE BEEN DETERMINED AND DEVIATIONS WILL BE CAUSE FOR REJECTION. REMOVE ALL BURRS AND SHARP EDGES.

NOTICE TO PERSONS RECEIVING THIS DRAWING

THE TECHNICAL MATERIEL CORPORATION claims proprietary right in the material disclosed hereon. This drawing is issued in confidence for engineering information only and may not be reproduced or used to manufacture anything shown hereon without permission from THE TECHNICAL MATERIEL CORPORATION to the user. This drawing is loaned for mutual assistance and is subject to recall at any time.

Property of:

THE TECHNICAL MATERIEL CORPORATION  
MAMARONECK, NEW YORK



A-1618 A

4	8	NTH0832BN10	Nut, Hex.	
8	7	LWEO8MN	Lockwasher, Ext.	
4	6	SCBS0832BN8	Screw, Machine	
4	5	SCBS0832BN5	Screw, Machine	
4	4	WA-109-46	Washer, Fiber	
4	3	NS3W0204	Insulator, 1/2 D. x 1/2 Lg.	
2	2	MS-1428	Bracket, Coil Mtg.	
1	1	CL-142	Coil, RF, Fixed, 10.9 mhy	

REQ. ITEM	PART NO.	DESCRIPTION	SYMBOL
THE TECHNICAL MATERIEL CORP. MAMARONECK, NEW YORK			
STOCK SIZE		AC-100 ASS'Y.	
MATERIAL	WEIGHT PER PC.	(COIL, LF, 1PA TANK, 4-12 MC)	
TYPE & TEMPER		1610/19/59	RG
HEAT TREAT. SPEC.		RE-DRAWN	ELEC. DES. APP. MECH. DES. APP.
FINISH & SPEC. NO.		Checked	FINAL APPROVAL

A 1	RE-DRAWN - COMPL. REVISION	10/19/59	1462	16	File	
ISSUE ITEM	CHANGED FROM	DATE	CH. NO.	DRAFTS	CHECKER	ENG. APP.
TOLERANCES		SCALE:				
ALL OTHERS	DEC. DIM. ± FRAC. DIM. ± ANGULAR DIM. ±	DRILL, PUNCH, COMMERCIAL STOCK SIZES AND MANUFACTURERS TOLERANCES ARE NOT INCLUDED.				

1	AC-100	PROJECT NO.	ASSY. NO.	DATE
REQ. PER UNIT	MODEL	PROJECT NO.	ASSY. NO.	DATE
USED ON				

A-1618 A