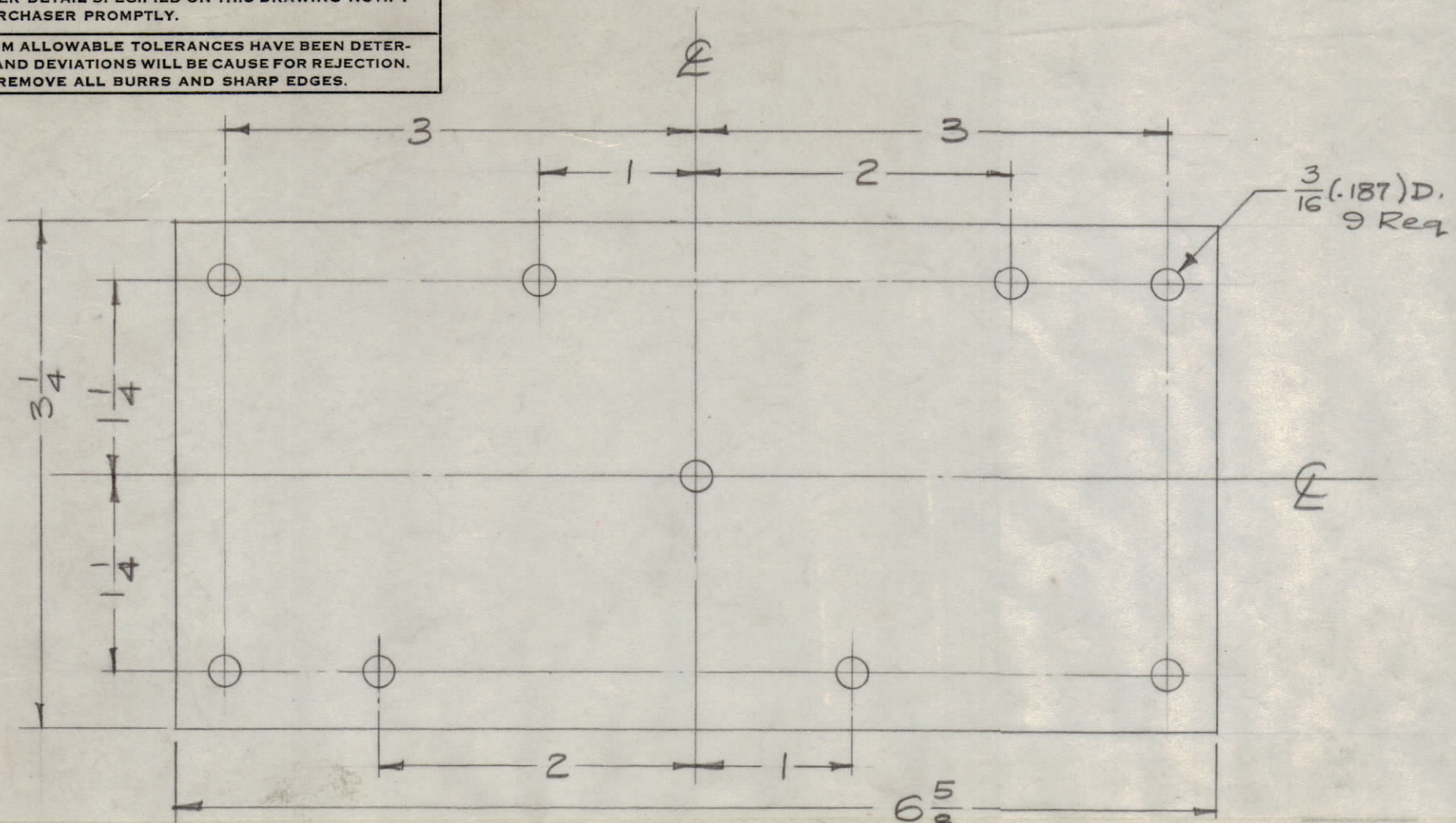
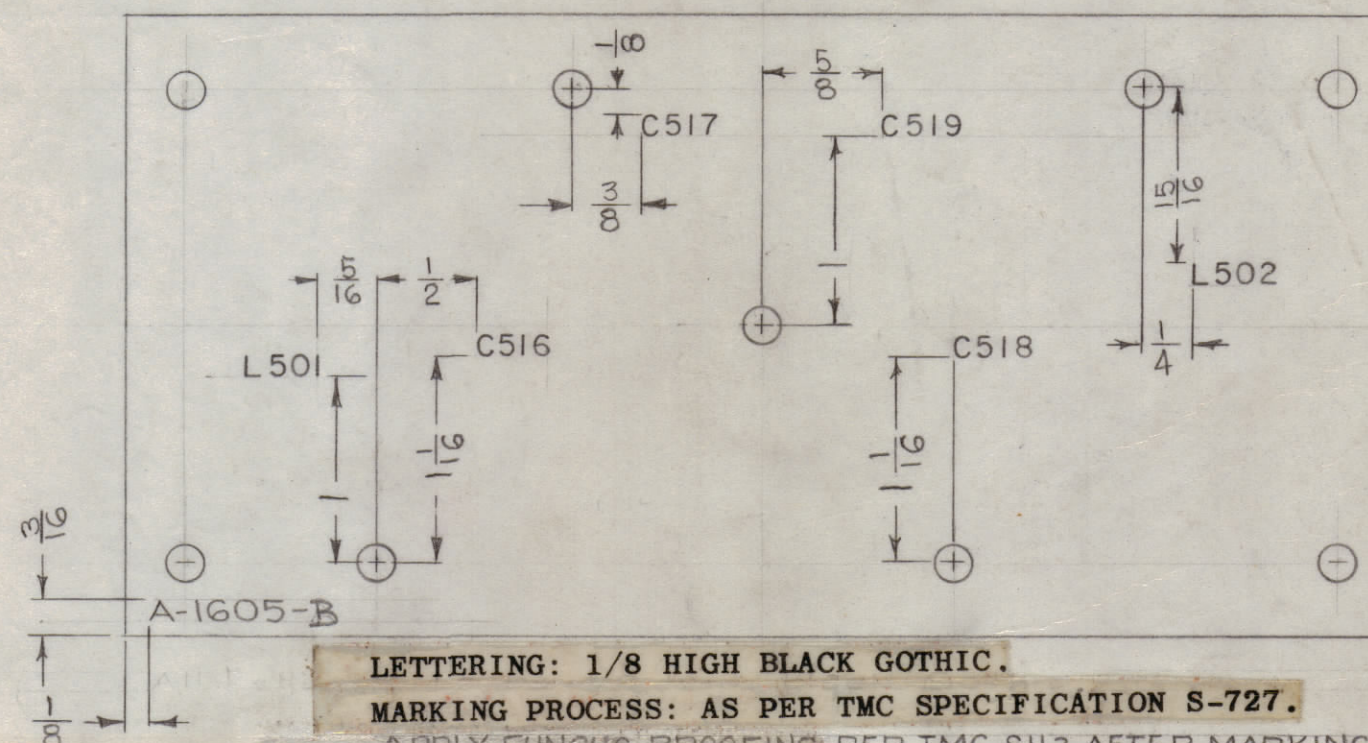


IF IT IS FOUND DESIRABLE TO CHANGE ANY TOLERANCE OR OTHER DETAIL SPECIFIED ON THIS DRAWING NOTIFY THE PURCHASER PROMPTLY.

MAXIMUM ALLOWABLE TOLERANCES HAVE BEEN DETERMINED AND DEVIATIONS WILL BE CAUSE FOR REJECTION. REMOVE ALL BURRS AND SHARP EDGES.



STAGE 1 MACHINING A-1605-1

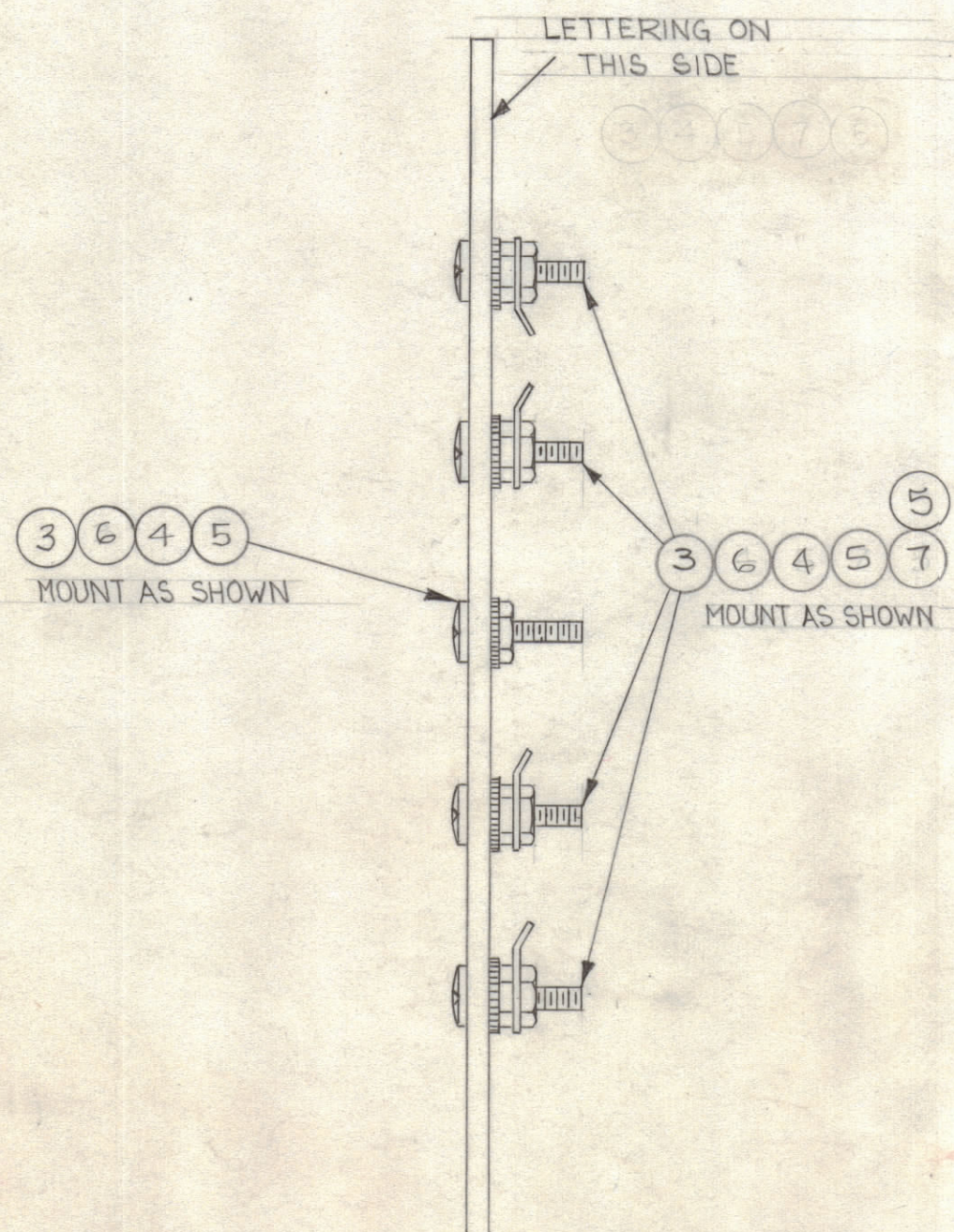


LETTERING: 1/8 HIGH BLACK GOTHIC.

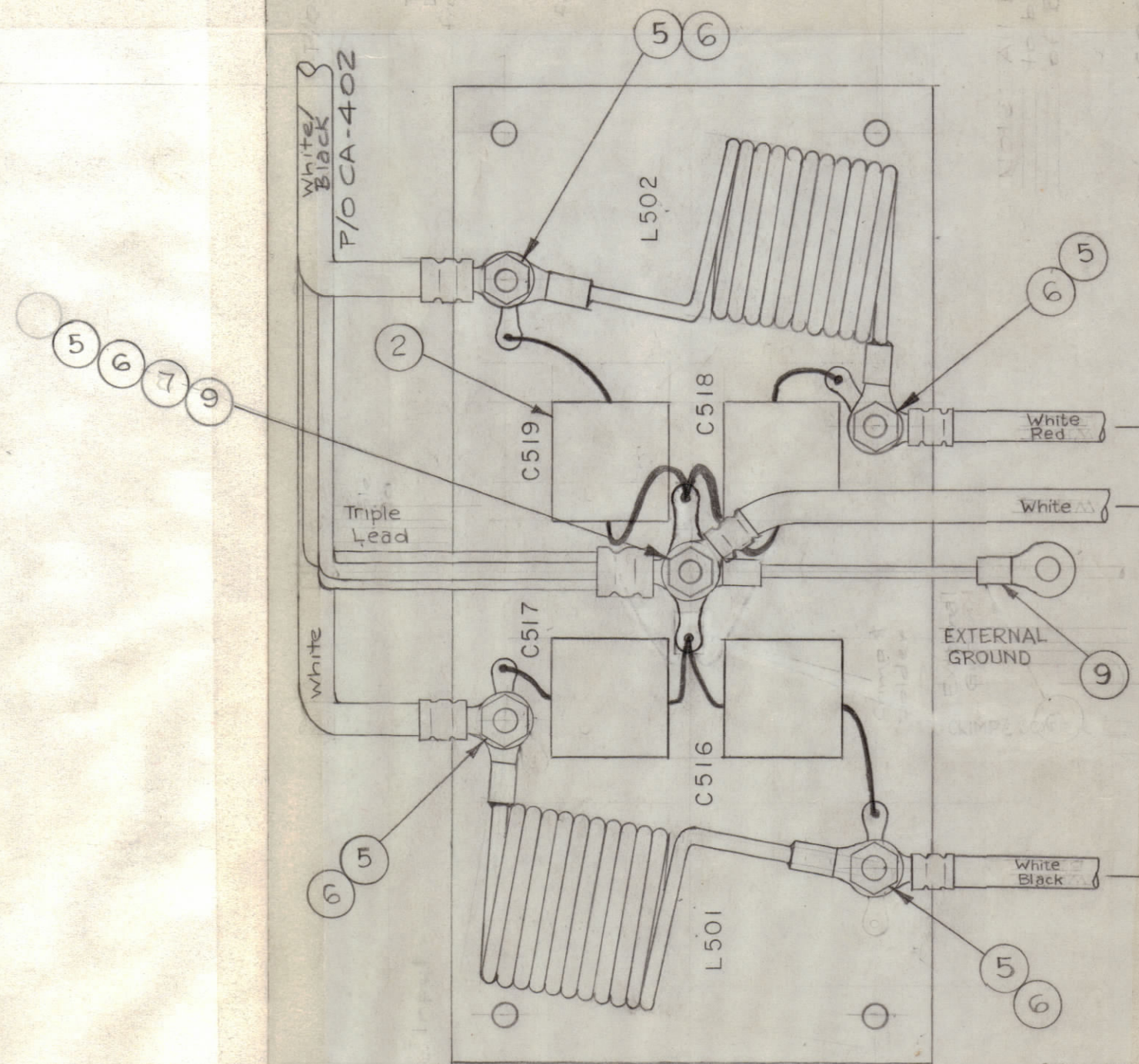
MARKING PROCESS: AS PER TMC SPECIFICATION S-727.

APPLY FUNGUS PROOFING PER TMC S113 AFTER MARKING.

STAGE 2 LETTERING A-1605-2



STAGE 3 MECHANICAL SUB-ASSEMBLY A-1605-3



STAGE 4 FINAL ASSEMBLY A-1605-4

NOTE: ALL LEADS FROM CA-402 & A-1606 TO BE SECURED UPON ASSEMBLY OF BOARD INTO THE UNIT. (SHOW FOR REF ONLY)

REQ.	ITEM	PART NO.	DESCRIPTION	SYMBOL
X	10	BS-100	Solder, Soft	
1	9	CA-409-21-2.00	Cable Ass'y., Jumper	
	8	DELETED		
6	7	TE-104-4	Lug, Solder (#10)	
10	6	FW10HBN	Washer, Flat	
14	5	NTH1032BN12	Nut, Hex.	
5	4	LWE10MRN	Lockwasher, Ext.	
5	3	SCBP1032BN12	Screw, Machine	
4	2	CM35F103F03	Capacitor, Fixed, Mica	
2	1	CL-120-1	CHOKE 2 μH	L502 L501

1/8 THK		THE TECHNICAL MATERIEL CORP.	
STOCK SIZE		MAMARONECK, NEW YORK	
PHENOLIC		TERMINAL BOARD, A.C. FILTER,	
MATERIAL		ALL STAGES	
XXXXP		16 1/15/58	
TYPE & TEMPER		DRAWN	ELEC. DES. APP.
HEAT TREAT. SPEC.		CHECKED	MECH. DES. APP.
SEE NOTE STAGE 2		FINAL APPROVAL	
FINISH & SPEC. NO.		A-1605 E	

ISSUE	ITEM	CHANGED FROM	DATE	CH. NO.	DRAFTS	CHECKER	ENG. APP.
E		IT 2 WAS CM35C103J. ADD SHOWN FOR REF. MODIFY LUG	12-21-66	17533	RME	rb	rb

TOLERANCES		SCALE:
ALL OTHERS	DEC. DIM. ± FRAC. DIM. ± ANGULAR DIM. ±	DRILL, PUNCH, COMMERCIAL STOCK SIZES AND MANUFACTURERS TOLERANCES ARE NOT INCLUDED.

1	CAB-7	PROJECT NO.	ASSY. NO.	12-16-58	DATE
REQ. PER UNIT	MODEL	PROJECT NO.	ASSY. NO.	DATE	USED ON