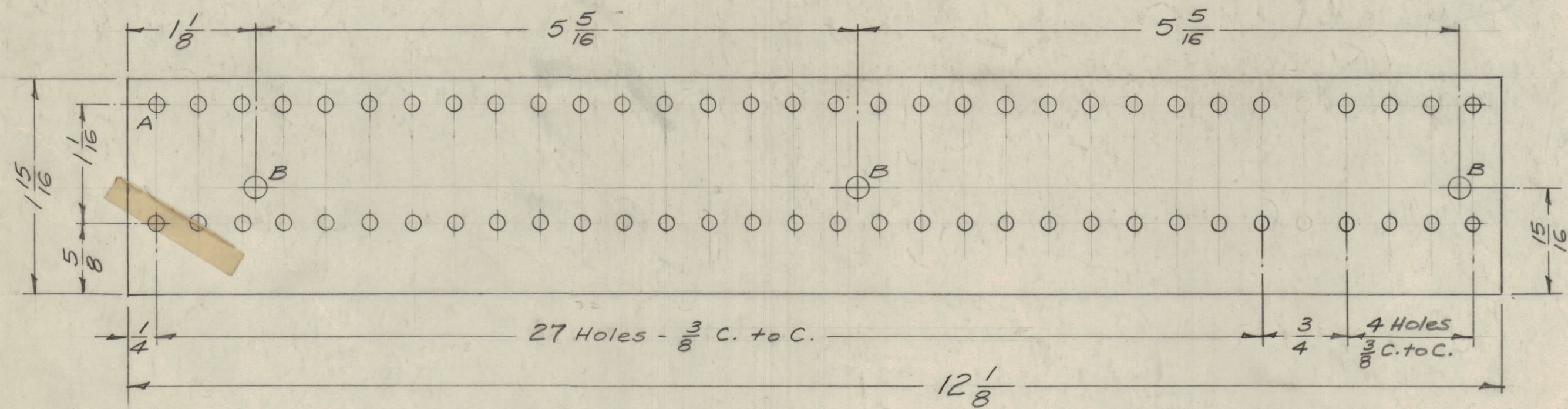
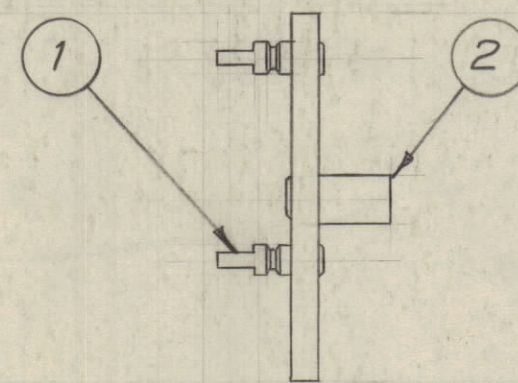


IF IT IS FOUND DESIRABLE TO CHANGE ANY TOLERANCE OR OTHER DETAIL SPECIFIED ON THIS DRAWING NOTIFY THE PURCHASER PROMPTLY.
 MAXIMUM ALLOWABLE TOLERANCES HAVE BEEN DETERMINED AND DEVIATIONS WILL BE CAUSE FOR REJECTION. REMOVE ALL BURRS AND SHARP EDGES

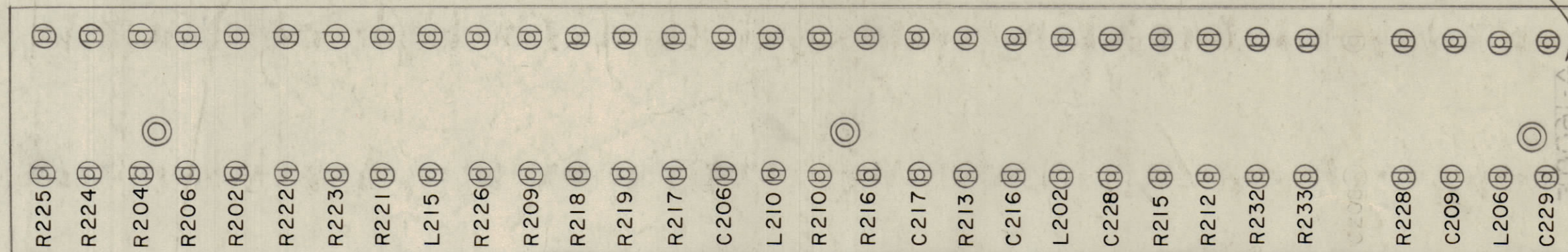
$\pm .001$
 A - No. 33 Dr. (.113 D.) 62 Req.
 B - No. 12 Dr. (.189 D.) 3 Req.



A-1600-1
 STAGE 1 MACHINING



A-1600-3
 STAGE 3 MECHANICAL ASS'Y.



Lettering to be 1/8 high black Gothic

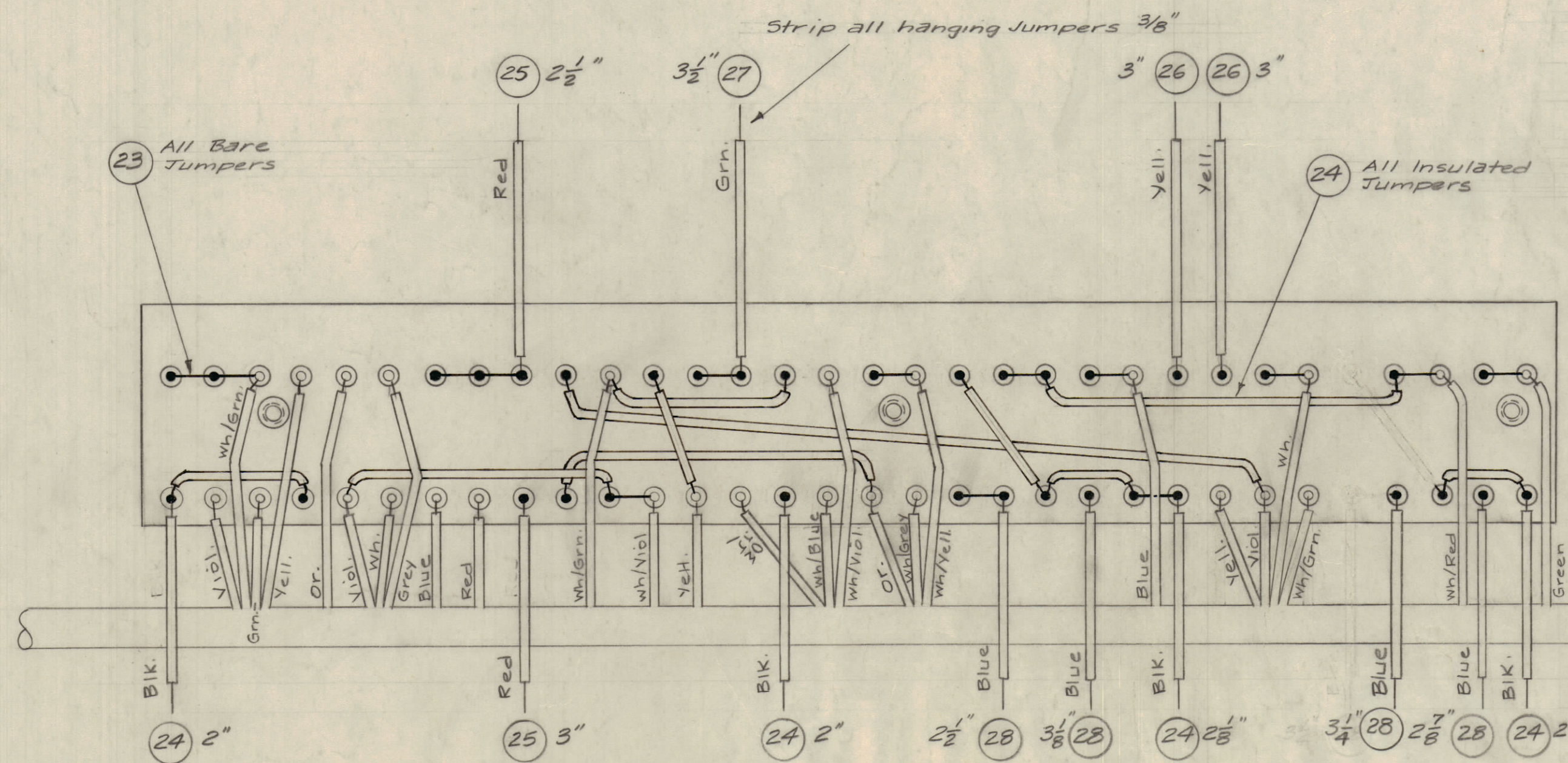
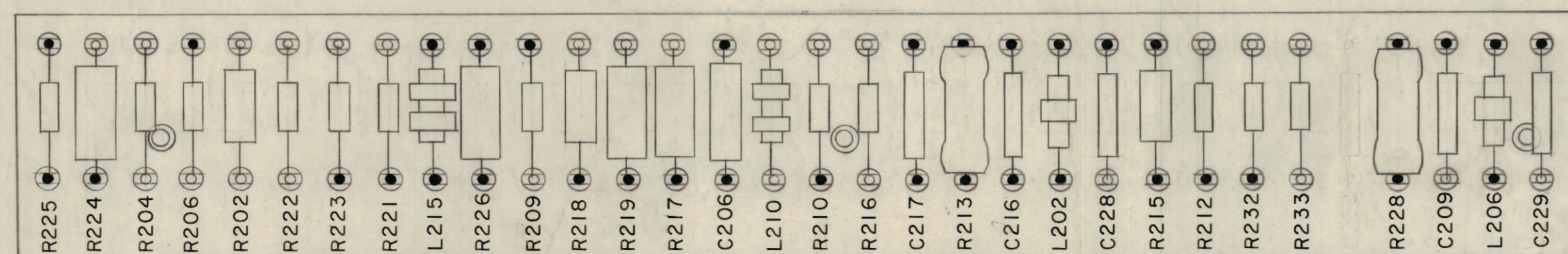
MARKING PROCESS: AS PER T.M.C. SPECIFICATION S-727

A-1600-2
 STAGE 2 LETTERING

NOTE: FUNGUS PROOFING, S113
 * APPLY S-113 AFTER MARKING

stamp on bottom of board.
 A-1600 E

A-1600-4
 FINAL ASSEMBLY



NOTES: Cable (CA-415) shown on this Ass'y. for Ref. Only. Solder all Connections Indicated by blackened Terminals.
 All other connections (from Cable) to be soldered upon Ass'y. of Terminal Board and Cable into unit. (Terminal Board should be connected to Cable before cable is laid in unit)

REQ. ITEM	PART NO.	DESCRIPTION	SYMBOL
1	30 CL-101-4	CHOKE, RF	L215
X	29 B5-100	Solder, Soft	
X	28 MWC22(7)UG	Wire, Insulated, 22 Ga.	Blue
X	27	5	Grn.
X	26	4	Yell.
X	25	2	Red
X	24 MWC22(7)UD	Wire, Insulated, 22 Ga.	Blk.
X	23 WL-100-8	Wire, Buss (24 Ga.)	
1	22 RC42GF474J	Resistor, Fixed, Comp.	R226
1	21 RC20GF223J		R225
1	20 RC42GF184J		R224
1	19 RC20GF434J		R222
1	18 RC42GF473J		R219
1	17 RC32GF823J		R218
1	16 RC42GF123J		R217
3	15 RC20GF183J		R215
1	14 RC32GF471J	, Comp.	R213
2	13 RW-107-41	, W.W.	R228
1	12 RC20GF105J	, Comp.	R212
3	11 RC20GF100J		
1	10 RC20GF104J		R209
1	9 RC20GF102J		R206
1	8 RC20GF473J		R204
1	7 RC32GF104J	Resistor, Fixed, Comp.	R202
1	6 CL-100-5	Coil, RF, 750uhy	L210
2	5 CL177	Coil, RF, 180uhy	L206
5	4 CM20F102G03	Capacitor, Fixed, Mica	L202
1	3 CM35F103E03	Capacitor, Fixed, Mica	C206
3	2 TE-108-3	Standoff, Rivet Type	
62	1 TE-109-3	Terminal Lug	

ISSUE	ITEM	CHANGED FROM	DATE	CN. NO.	DRAFTS	CHECKER	ENG. APP.
G		IT 5 PIN WAS A10L5	4/22/72	20747	GE	8	8
F		IT 24-28 (7) WAS (1) IT 4 WAS CM20B102J IT 7-10, 12, 14, 16-18 & 20-22 TOL WAS 1. ITEM 3 WAS CM35F102J	11/14/66	17231	WHD		
E	1	S-113 ADDED STAGE 2	4/13/64	11186	NJB		
D	3	STRIP ALL HANGING JUMPERS TERMINALS REWORKED STRIP ALL WIRE REVERSE	9/25/63	6622	RC		
C	1	Item 3 WAS CM35G502J	9/24/59	891	J.C.B.		
B	1	L 215 WAS CL-100-5	7/24/59	744	J.C.B.		
A	1	5208 # 2 HOLES DIE. (INDEFECT PART) ASS'Y W/TYPE 20022	1/3/59	673			

FORM-111

A-1600
 G

REQ. PER UNIT	MODEL	PROJECT NO.	ASSY. NO.	DATE
1	RTF-2 MULT			1-9-59
USED ON				

THE TECHNICAL MATERIEL CORP. MAMARONECK, NEW YORK			
STOCK SIZE			
Phenolic, # TERMINAL BOARD, ALL STAGES			
MATERIAL WEIGHT PER PC			
XXXXP LAMINATE			
TYPE & TEMPER		16 V3/59	
HEAT TREAT. SPEC.		NATURAL	
FINISH & SPEC. NO.		A-1600 G	