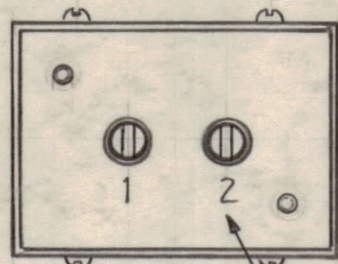
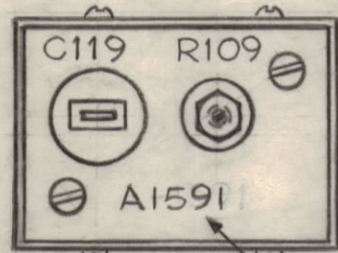
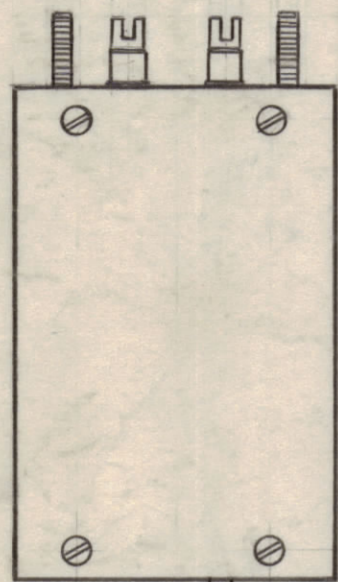


IF IT IS FOUND DESIRABLE TO CHANGE ANY TOLERANCE OR OTHER DETAIL SPECIFIED ON THIS DRAWING NOTIFY THE PURCHASER PROMPTLY.

MAXIMUM ALLOWABLE TOLERANCES HAVE BEEN DETERMINED AND DEVIATIONS WILL BE CAUSE FOR REJECTION. REMOVE ALL BURRS AND SHARP EDGES.

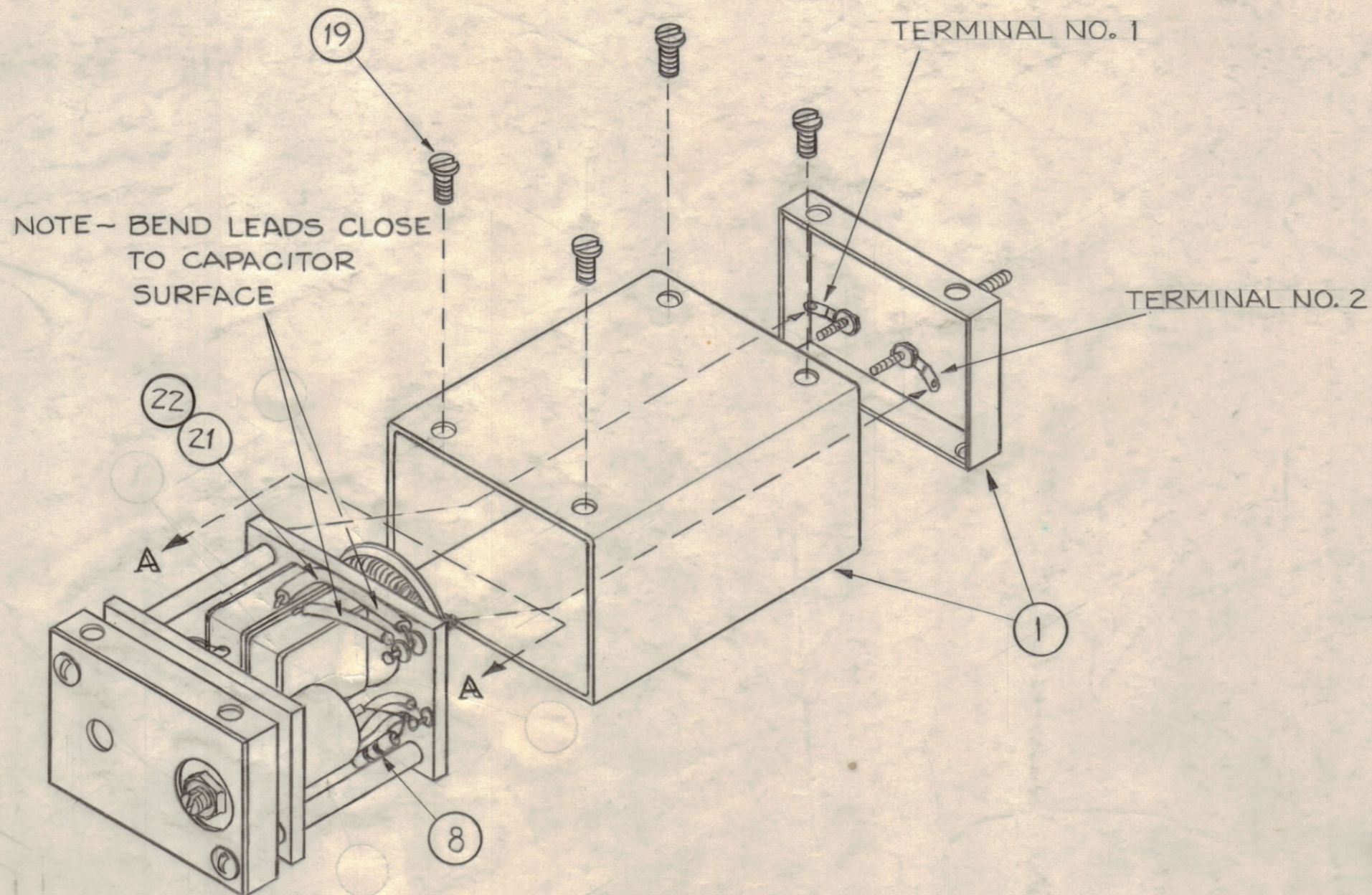


METAL STAMP 1/8 HIGH.



NOTE~  
STAMP TMC  
PT. NO. AFTER  
PAINTING

STAMP TMC PT. NO 1/8  
HIGH BLACK GOTHIC.



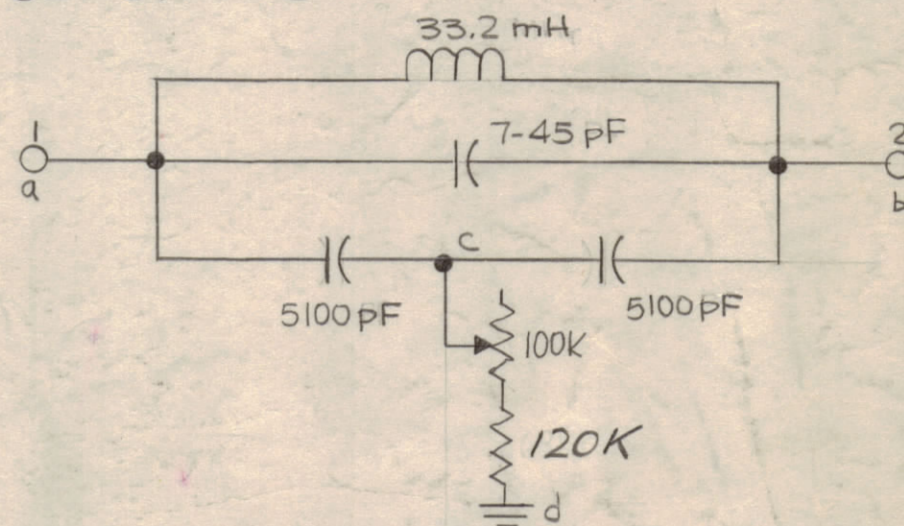
NOTE - BEND LEADS CLOSE  
TO CAPACITOR  
SURFACE

FINISH ~  
1 ~ DEGREASE  
2 ~ S114 ZINC CHROMATE PRIMER  
3 ~ S115 SMOOTH GRAY ENAMEL

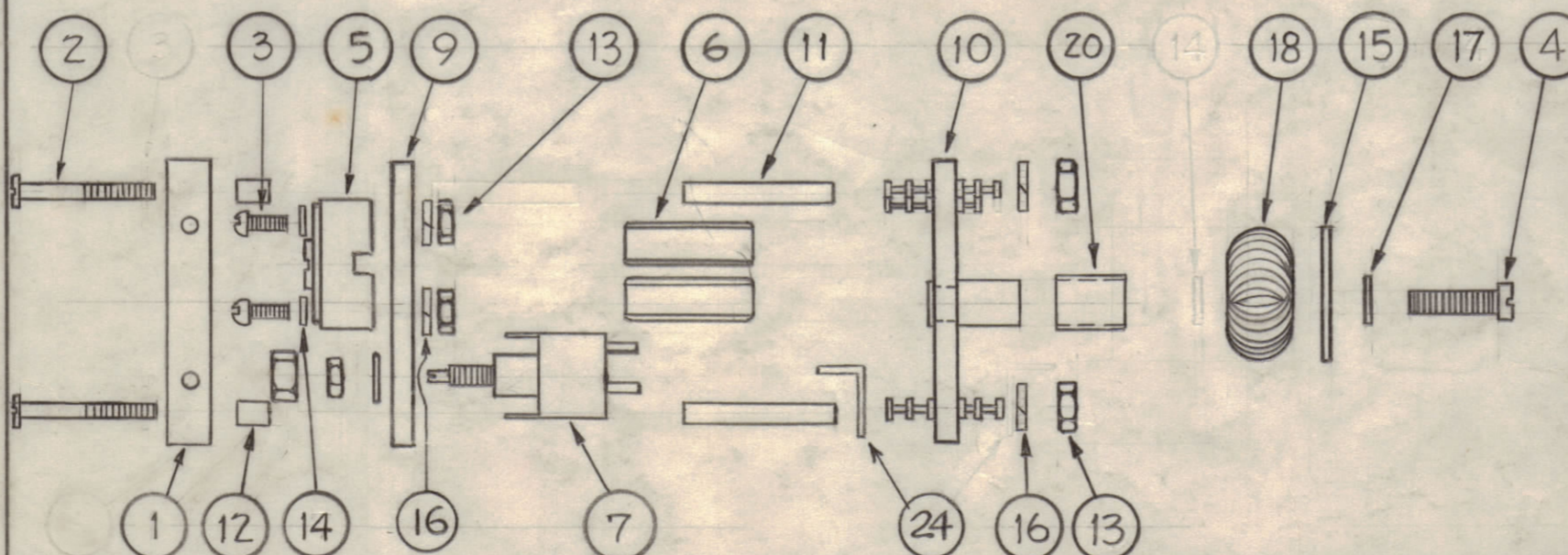
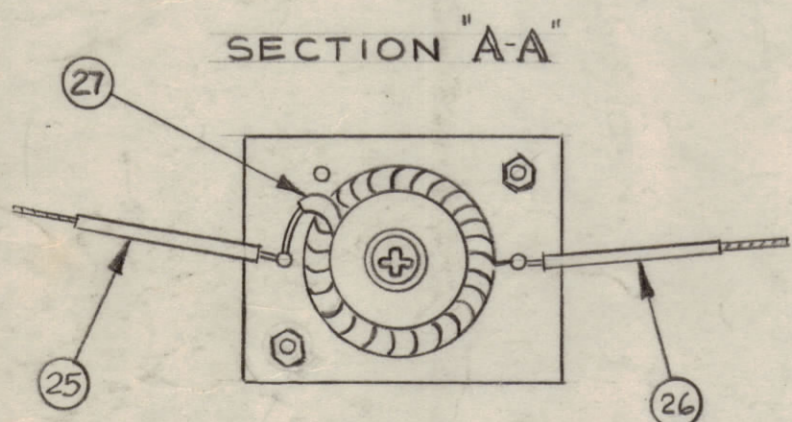
(PAINT ALL OUTSIDE SURFACE OF CAN EXCEPT  
TERMINAL END.)  
4 ~ TEST SPEC. S-400

NOTE ~  
USE SLEEVING (ITEM 21) WHEREVER THERE  
EXISTS THE DANGER OF SHORTING.

SCHEMATIC



X	27	PX-100-1-.085	INSULATION, SLEEVING	BLK
X	26	MWC22(7)U0	WIRE, INSULATED	BLK
X	25	MWC22(7)U1	WIRE, INSULATED	BRN
1	24	TE-113-120	LUG, SOLDER	
X	23	BS100	SOLDER, SOFT	
X	22	WL100-7	WIRE, BUSS # 22	
X	21	PX104-7-034	INSULATION, SLEEVING	Gray
3/8	20	PX104-1-.Z63	INSULATION, SLEEVING	Black
8	19	SFB0256SN3	SCREW, MACHINE	
1	18	CL141	REACTOR, TORIDAL	L128
1	17	WA109-36	WASHER, FIBER	
4	16	LWS04MRN	LOCKWASHER, SPRING TYPE	
1	15	WA109-56	WASHER, FIBER	
2	14	WA109-17	WASHER, FIBER	
4	13	NTH0440BN6	NUT, HEXAGON	
2	12	TE117-33	SPACER	
2	11	TE117-32	SPACER	
1	10	PX423	MOUNTING BOARD, BOTTOM	
1	9	PX422	MOUNTING BOARD, TOP	
1	8	RC20GF124J	RESISTOR, FIXED, COMP.	R173
1	7	RVI06UX10C104A	RESISTOR, VARIABLE, 1/2 WATT	R109
2	6	CM350F5100F	CAPACITOR, FIXED, MICA	C146 C147
1	5	CV11C450	CAPACITOR, VARIABLE	C119
1	4	SCBP0632BN4	SCREW, MACHINE	
2	3	SCRPO440BN7	SCREW, MACHINE	
2	2	SCBP0440BN28	SCREW, MACHINE	
X	1	BX170	CASE AND COVER	



E	CHG IT 8 PIN	6/14/72	20737	GE	9	9
D	TEST SPEC. & SCHEM. ADDED	2-20-47	17835	MB	9	9
C	IT 24 RELOCATED	1/12/66	15557	MB	9	9
B	IT 3 WAS SCBP0440BN7	12-30-64	13021	MB	9	9
A	IT 17 WAS FW04HBN, TITLES UPD. IT 24 THRU 27 ADD., HDW. UPD. SECTION 'A-A' PICT. ADDED	9-16-64	12379	MB	9	9
ISSUE	ITEM	CHANGED FROM	DATE	CH. NO.	DRAFTS	CHECKER

TOLERANCES		SCALE:
ALL OTHERS	DEC. DIM. ± FRAC. DIM. ± ANGULAR DIM. ±	DRILL, PUNCH, COMMERCIAL STOCK SIZES AND MANUFACTURERS TOLERANCES ARE NOT INCLUDED.

1	SBE-2	12-17-59		
REQ. PER UNIT	MODEL	PROJECT NO.	ASSY. NO.	DATE
USED ON				

REQ. ITEM	PART NO.	DESCRIPTION	SYMBOL
THE TECHNICAL MATERIEL CORP. MAMARONECK, NEW YORK			
STOCK SIZE			
17 KC NOTCH FILTER			
MATERIAL WEIGHT PER PC.			
TYPE & TEMPER			
HEAT TREAT. SPEC.			
FINISH & SPEC. NO.			

John C. Biele  
DRAWN  
ELEC. DES. APP.  
MECH. DES. APP.  
CHECKED  
FINAL APPROVAL  
A-1591 E