

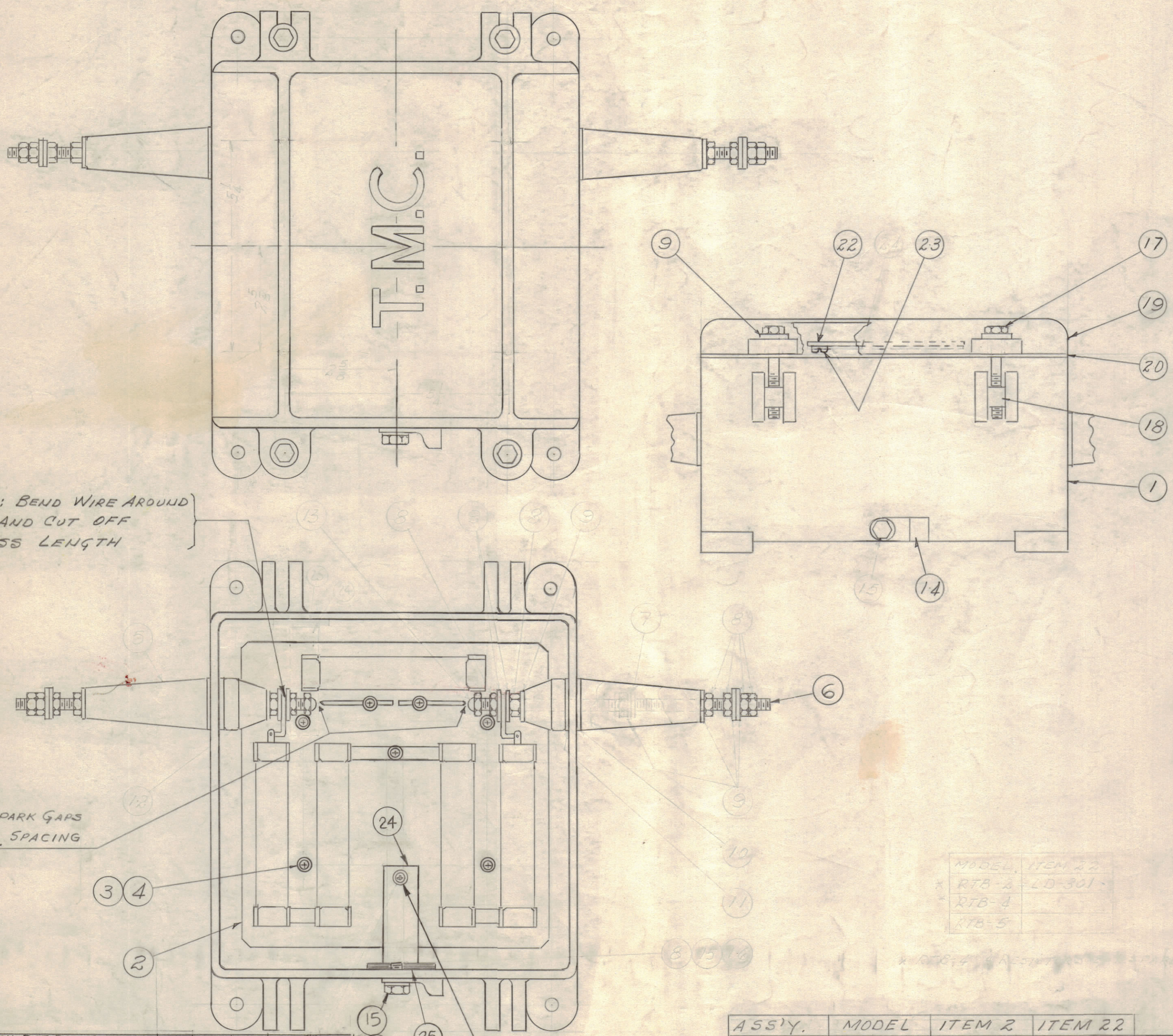
IF IT IS FOUND DESIRABLE TO CHANGE ANY TOLERANCE OR OTHER DETAIL SPECIFIED ON THIS DRAWING NOTIFY THE PURCHASER PROMPTLY.

MAXIMUM ALLOWABLE TOLERANCES HAVE BEEN DETERMINED AND DEVIATIONS WILL BE CAUSE FOR REJECTION. REMOVE ALL BURRS AND SHARP EDGES

NOTICE TO PERSONS RECEIVING THIS DRAWING

THE TECHNICAL MATERIEL CORPORATION claims proprietary right in the material disclosed hereon. This drawing is issued in confidence for engineering information only and may not be reproduced or used to manufacture anything shown hereon without permission from THE TECHNICAL MATERIEL CORPORATION to the user. This drawing is loaned for mutual assistance and is subject to recall at any time.

Property of:  
THE TECHNICAL MATERIEL CORPORATION  
MAMARONECK, NEW YORK



NOTE: BEND WIRE AROUND STUD AND CUT OFF EXCESS LENGTH

SET SPARK GAPS FOR 1/32" SPACING

MODEL ITEM 22  
RTB-2 LD-301  
RTB-4  
RTB-5

2	25	AD-101-1/6	DESICANT
1	24	MS-933	HOLDER, DESICANT
4	23	SFB02569N4	SCREW THREAD CUTTING
1	22	SEE CHART	SCHEMATIC DIAGRAM
X	21	GL-101-2	CEMENT, PLIOBOND

A 1559 J

1	20	GA-103	GASKET, COVER
1	19	PM-105	COVER
4	18	PM-100	NUT, PLAIN BARREL
4	17	3CHH25203928	BOLT, HEX.
1	16	LWS25M55	LOCKWASHER, SPLIT
1	15	3CHH25203928	BOLT, HEX
1	14	TE-178-2	TERM, ELECTRICAL
	13	DELETED	
	12	DELETED	
	11	DELETED	
	10	DELETED	
4	9	FW25H55	WASHER, FLAT
	8	DELETED	
	7	DELETED	
2	6	A 102	INSULATOR ASSY
	5	DELETED	
5	4	LWE08MRN	WASHER, LOCK
5	3	SCBP0832BNG	SCREW, MACHINE
1	2	SEE CHART	RESISTOR BOARD ASSY
1	1	PM-122	CASE, MACHINING

H	1	ON FACTORIAL, SPARK GAP SETTING WAS V16	5-3-65	13973	AL	QCB	MM
G	1	ON B/M IT. 13 DELETED.	10-1-64	12479	AL	@	MM
F	5	IT. 18 WAS PIN, COVER BOLT					
	4	IT. 6 WAS A-100					
	3	IT. 384 WAS 4 REQ EACH	7-21-64	11904	LB	@	MM
	2	ON PICT. IT. 25 RELOCATED					
	1	ITS #5, 7, 8, 10, 11, 12 DELETED					
E	1	HARDWARE CLARIFIED	3-22-63	8604	AL	WY	QCB
ISSUE	ITEM	CHANGED FROM	DATE	CN. NO.	DRAFTS	CHECKER	ENG. APP.

ASS'Y.	MODEL	ITEM 2	ITEM 22	
A 1559-1	RTB-2 OBS	A 1557-1	LD 301	OBS. USE A-1559-3
A 1559-2	RTB-4	A 1557-2	LD 436	
A 1559-3	RTB-5	A 1557-1	LD 437	
A 1559-4	RTB-4A	A 1557-3	LD 2079	

J	ADD. ON CHART	A 1559-4 RTB-4A	5-4-66	16209	HCA	QCB		MODEL	PROJECT NO.	ASS'Y. NO.	DATE
ISSUE	CHANGED FROM		DATE	CN. NO.	DRAFTS	CHKD	APPD	USED ON			

REQ. ITEM	PART NO.	DESCRIPTION	SYMBOL
THE TECHNICAL MATERIEL CORP. MAMARONECK, NEW YORK			
STOCK SIZE			
RHOMBIC TERMINAL UNIT			
MATERIAL WEIGHT PER PC. R.T.B.			
TYPE & TEMPER			
DRAWN			
ELEC. DES. APP. MECH. DES. APP.			
HEAT TREAT. SPEC.			
CHECKED			
FINAL APPROVAL			
FINISH & SPEC. NO.			

A 1559 J