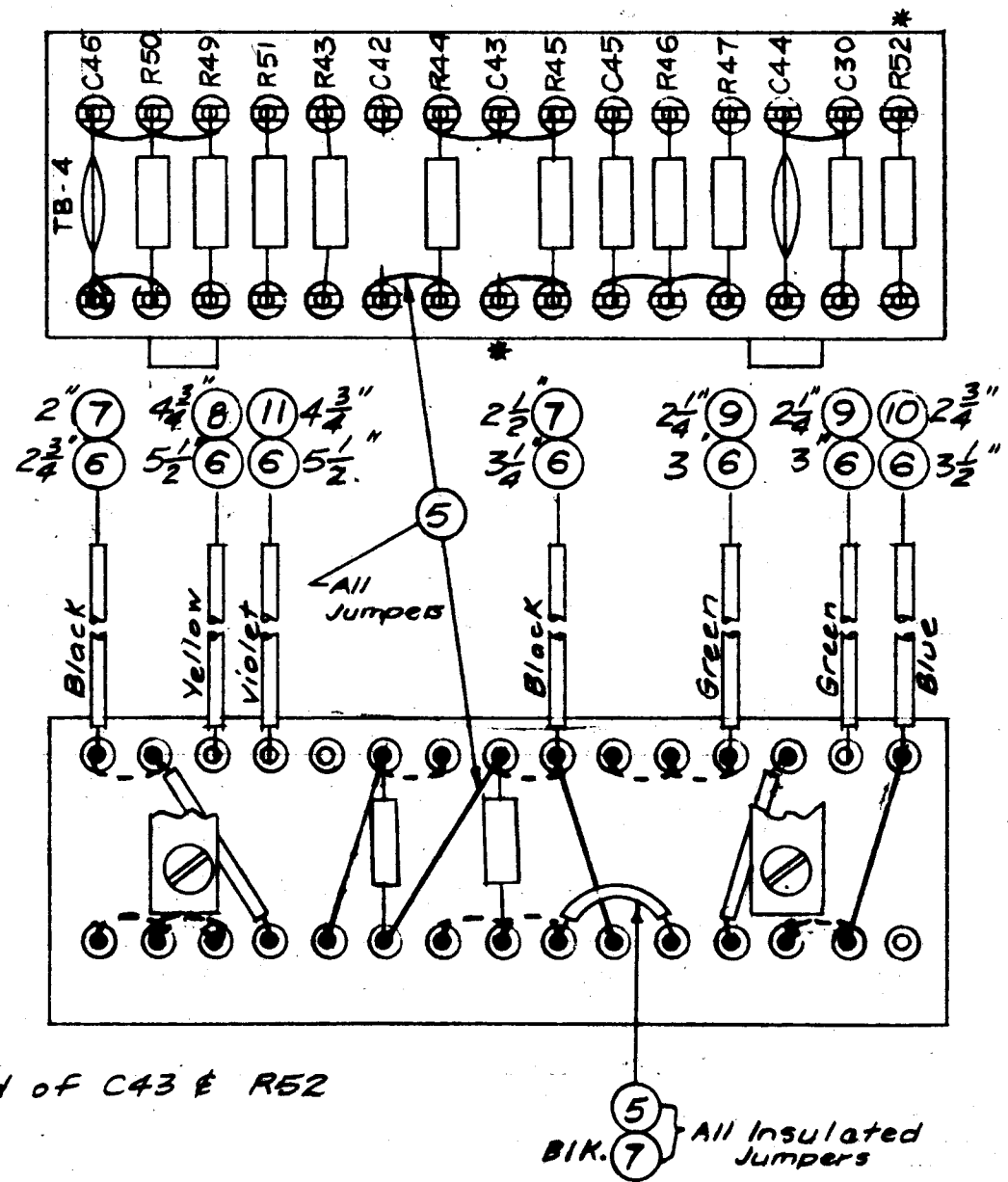


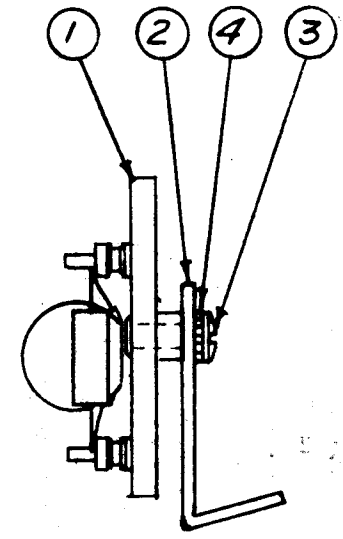
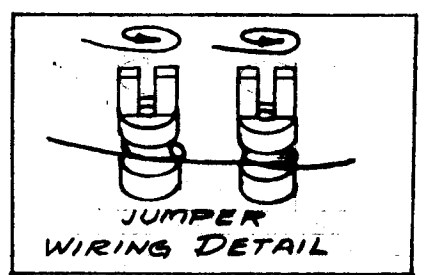
A-1528

Stamping to be 1/8" high black Gothic,  
Stamp before Ass'y. of components.

MARKING PROCESS: AS PER TMC SPECIFICATION S-727.



\* Do Not Solder This End of C43 & R52



NOTICE TO PERSONS RECEIVING THIS DRAWING  
THE TECHNICAL MATERIEL CORPORATION claims  
proprietary right in the material disclosed hereon.  
This drawing is issued in confidence for engineering  
information only and may not be reproduced or used  
to manufacture anything shown hereon without per-  
mission from THE TECHNICAL MATERIEL CORPORA-  
TION to the user. This drawing is loaned for mutual  
assistance and is subject to recall at any time.

Property of:  
THE TECHNICAL MATERIEL CORPORATION  
MAMARONECK, NEW YORK

1	26	RC20GF274K	Resistor, Fixed, Comp.	R45
1	25	RC20GF684K	Resistor, Fixed, Comp.	R44
X	24	BS-100	Solder, Soft	
1	23	RC20GF563K	Resistor, Fixed, Comp.	R52
1	22	RC20GF333K		R51
1	21	RC20GF102K		R50
1	20	RC20GF471K		R49
1	19	RC20GF823K		R47
1	18	RC20GF124K		R46
1	17	RC20GF474K	Resistor, Fixed, Comp.	R43
1	16	CC-100-15	Capacitor, Fixed, Ceramic	C46
1	15	CC215L100J		C45
1	14	CC-100-9		C44
2	13	CN-105C-1003J	CAPACITOR, FIXED, MYLAR	C43, C42
1	12	CC32CH101J	Capacitor, Fixed, Ceramic	C30
4 3/4"	11	PX-104-9-.034	Insulation, Sleeving (Size 20)	Violet
2 3/4"	10	PX-104-6-.034		Blue
4 1/2"	9	PX-104-4-.034		Green
4 3/4"	8	PX-104-2-.034		Yellow
7 1/4"	7	PX-104-1-.034	Insulation, Sleeving (Size 20)	Black
26 1/2"	6	WL-100-7	Wire, Buss (Size 22)	
X	5	WL-100-8	Wire, Buss (Size 24)	
2	4	LWEO6MRC	Lockwasher, Ext.	
2	3	SCBS0632BC6	Screw, Machine	
2	2	MS-1027	Bracket, Angle, Term. Bd.	
1	1	A-136B	Terminal Bd. No. 4 Sub-Ass'y	

REQ. ITEM	PART NO.	DESCRIPTION	SYMBOL
#		THE TECHNICAL MATERIEL CORP. MAMARONECK, NEW YORK	
#		TERMINAL BOARD NO. 4	
#		FINAL ASS'Y. & STAMPING	
#		6/9/58	JSR
TYPE & TEMPER	HEAT TREAT. SPEC.	DRAWN	CHECKED
#		P.L.K.	AWB
FINISH & SPEC. NO.		ELEC. DES. APP.	MECH. DES. APP.
		A-1528	

ISSUE	ITEM	CHANGED FROM	DATE	CH. NO.	DRAFTS	CHECKER	ENG. APP.
TOLERANCES			SCALE:				
DEC. DIM. ±			1				
FRAC. DIM. ±			MSR-3				
ANGULAR DIM. ±			4-9-58				
MAXIMUM ALLOWABLE TOLERANCES HAVE BEEN DETERMINED AND ANY DEVIATIONS WILL BE CAUSE FOR REJECTION, REMOVE ALL BURRS AND SHARP EDGES			REQ. PER UNIT				
			MODEL		PROJECT NO.		ASS'Y. NO.
							DATE
			USED ON				