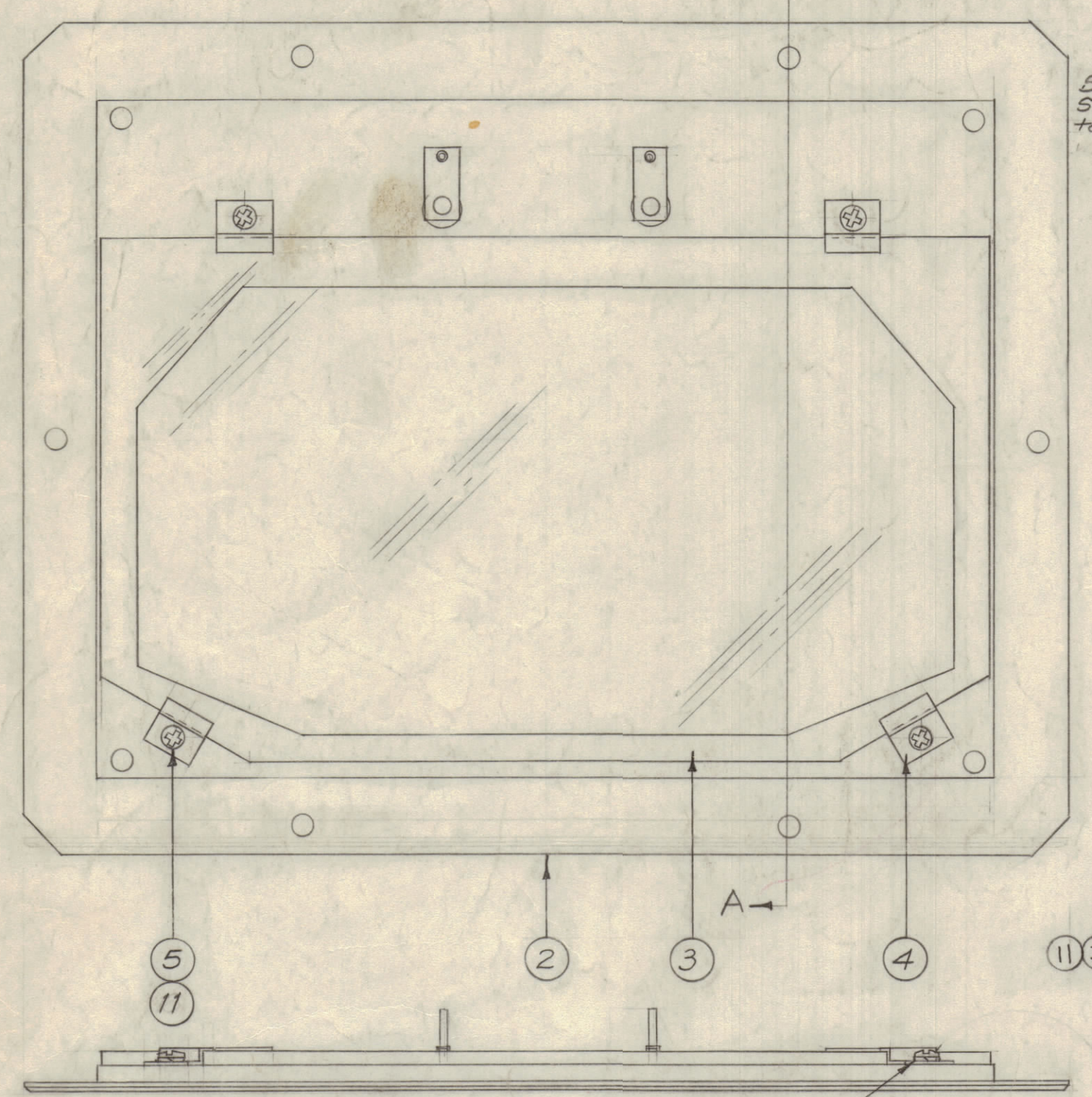


IF IT IS FOUND DESIRABLE TO CHANGE ANY TOLERANCE OR OTHER DETAIL SPECIFIED ON THIS DRAWING NOTIFY THE PURCHASER PROMPTLY.
 MAXIMUM ALLOWABLE TOLERANCES HAVE BEEN DETERMINED AND DEVIATIONS WILL BE CAUSE FOR REJECTION. REMOVE ALL BURRS AND SHARP EDGES

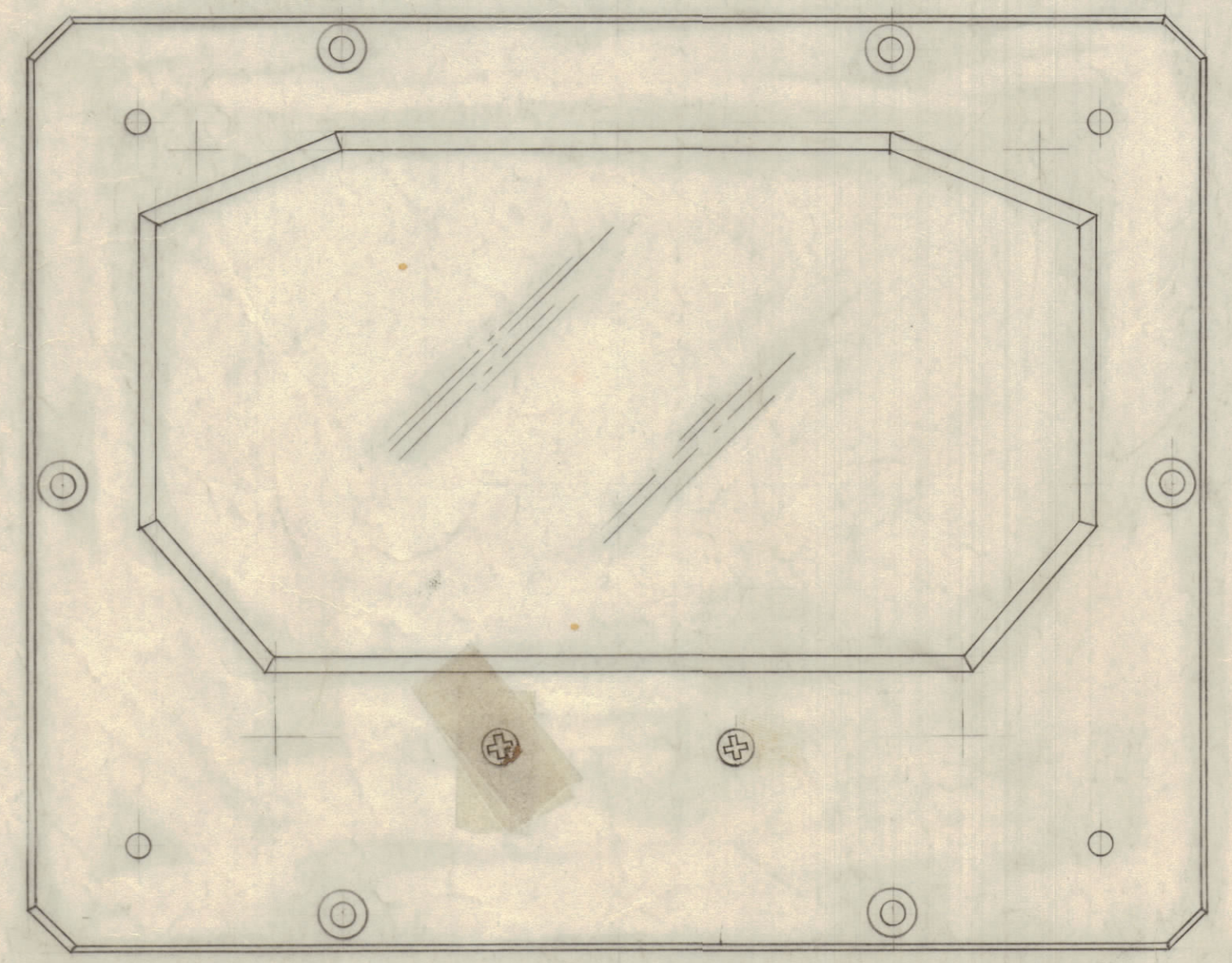
* IT. 27 FOR USE WITH ITEM 8.
 * IT. 34 FOR USE WITH ITEM 9.

Zero Adj. Ass'y. (Items 25, 26, *) must be free enough to allow for adjustments.

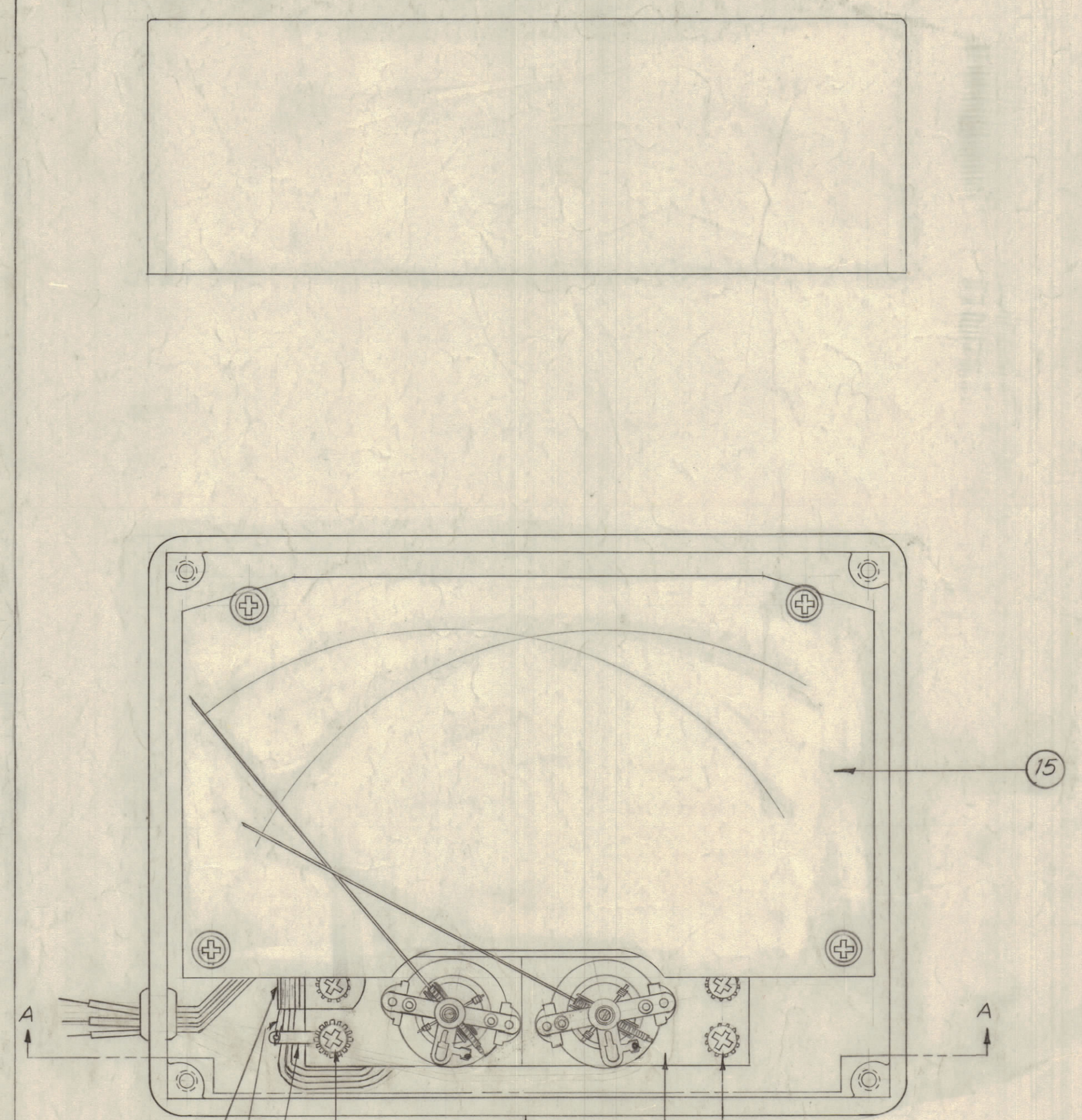
Sweat Solder Item * to item 25



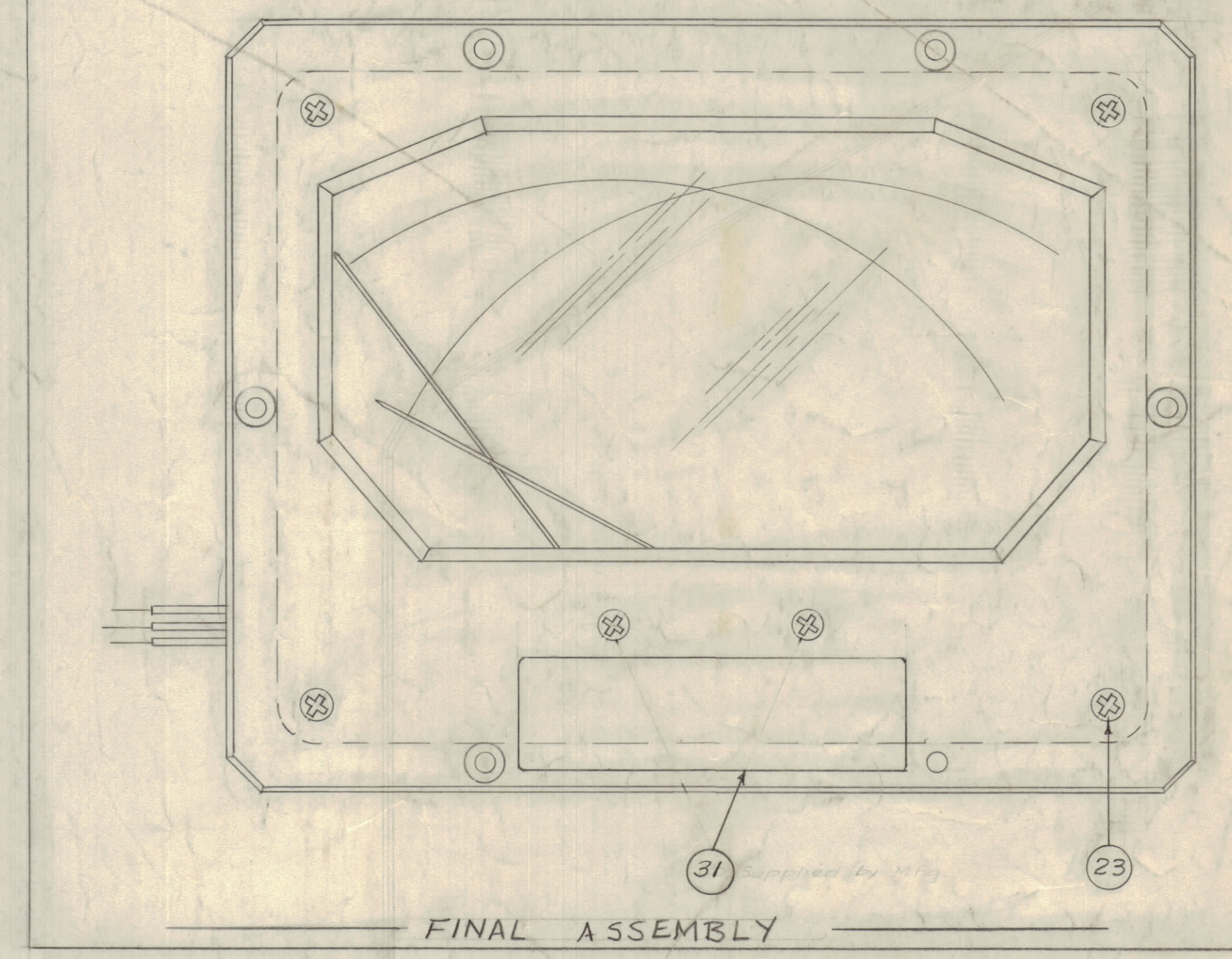
SEE DETAIL "B"



COVER ASSEMBLY



CASE Ass'y.



FINAL ASSEMBLY

MODEL	TMC METER NO.	DESCRIPTION	ITEM 15	ITEM 2	ITEM 3	ITEM 31	ITEM 22, 23, 30 LENGTHS
MR112	A1509-100	DIAL FACE, METER	LD381	MS1191	PX401	NP231	8"
MR113	-3K		LD395	MS1191	PX401	NP231	8"
MR112	-1K		LD381	MS1191	PX401	NP231	22"
MR188	A1509-10K	DIAL FACE, METER	LD1676	MS4164	PX874	NONE	8"

SEE CHART FOR LENGTH

ITEM	DESCRIPTION	SYMBOL
1	34 A1518-2	ARM & PIN ASS'Y.
4	33 FWO2HBN	WASHER, FLAT
4	32 WA109-1	WASHER, NON-METALIC
1	31 SEE CHART	Plate, Instruction, Warning
30	LWC28(7)UG	Cable, Insulated, Stranded
2	LWC28(7)U2	" " " " " "
1	28 CU-102-1	CLAMP, CABLE, PLASTIC
1	27 A-1518-1	Arm & Pin Ass'y.
2	26 WA-131-3C	Washer, Spring
2	25 SCFP0440BNG	Screw, Machine (Paint Heads)
X	24 BS-100	Solder, Soft
4	23 SCBP0496BNG	Screw, Machine (Paint Heads)
22	LWC28(7)U0	Cable, Insulated, Stranded
7	21 EY102-33	Grommet, Elastic
1	20 TE-104-2	Lug, Terminal
4	19 LWEO6MRN	Lockwasher, Ext.
4	18 FWO6HBN	Washer, Flat
8	17 SCBP0632BNS	Screw, Machine
4	16 SCFP0632BNS	Screw, Machine
1	15 SEE CHART	Dial Face, Meter
4	14 TE0632BNG	Spacer, Special, Threaded
4	13 SCFP0632BNG	Screw, Machine
2	12 PM-481	Spacer, Meter Mtg. Plate
8	11 LWS02MRN	Lockwasher, Split
4	10 SCBP0256BNS	Screw, Machine
1	9 MM-100-2	Meter Movement
1	8 MM-100-1	Meter Movement
1	7 MS-1197	Plate, Mtg. Meter
-	6 Deleted	Deleted (Was LWS03MRC)
4	5 SCBP0256BNS	Screw, Machine
4	4 MS-1194	Clamp, Window
1	3 SEE CHART	Window, Meter
1	2 SEE CHART	Plate, Front, Meter
1	1 PX-402	Housing, Meter

ISSUE	ITEM	CHANGED FROM	DATE	CN. NO.	DRAFTS	CHECKER	ENG. APP.
H	1	MR112 WAS MR138 LD381 WAS LD652	4.11.68	18858	MS.	RD	RA
G	2	NOTE FOR IT. 27 & 34 CALLOUTS ADDED. ST. 11, 12, 13, 14, 15, 16, 17, 18, 19, 20, 21, 22, 23, 24, 25, 26, 27, 28, 29, 30, 31, 32, 33, 34 ADDED. DETAIL "B" ADD.	5.4.65	13942	22	RD	RA
F	1	B/M UPDATED; IT. 32 & 33 ADD; CHART REVISED; U/D UPDATED; MR188 ADD.	12.18.44	3144	92	RD	RA
E	1	IT. NO. ITEM 26 WAS WA-131-2C	6/13/58	394	MC	RD	RA
D	1	ADDED ITEM 31	5/14/58	4	MC	RD	RA
C	1	ADDED ITEM 28; SHEET DELINEATED SAME	5/14/58	3	MC	RD	RA
B	1	ITEMS 25, 26, & 27	7/10/58	2	16	RD	RA
A	1	ITEMS 6 WAS SCBP0496BNS ITEM 6 CHG'D TO ITEM 11	3/11/58	1	16	RD	RA

ALL OTHERS	DEC. DIM. ±	FRAC. DIM. ±	ANGULAR DIM. ±
	DRILL, PUNCH, COMMERCIAL STOCK	SIZES AND MANUFACTURERS	TOLERANCES ARE NOT INCLUDED.

REQ. PER UNIT	MODEL	PROJECT NO.	ASSY. NO.	DATE
1	MR188	SWR10K		12-18-64
1	MR-112	SWR-1K		12-16-59
1	MR-113	SWR-3K		5-21-58
1	MR-112	ATS-MCU-2		2-25-58

THE TECHNICAL MATERIEL CORP.
 MAMARONECK, NEW YORK
 METER ASS'Y.
 (Standing Wave Ratio Meter)

16 2/25/58

HEAT TREAT. SPEC. CHECKED

FINAL APPROVAL

A-1509 14

FINISH & SPEC. NO.