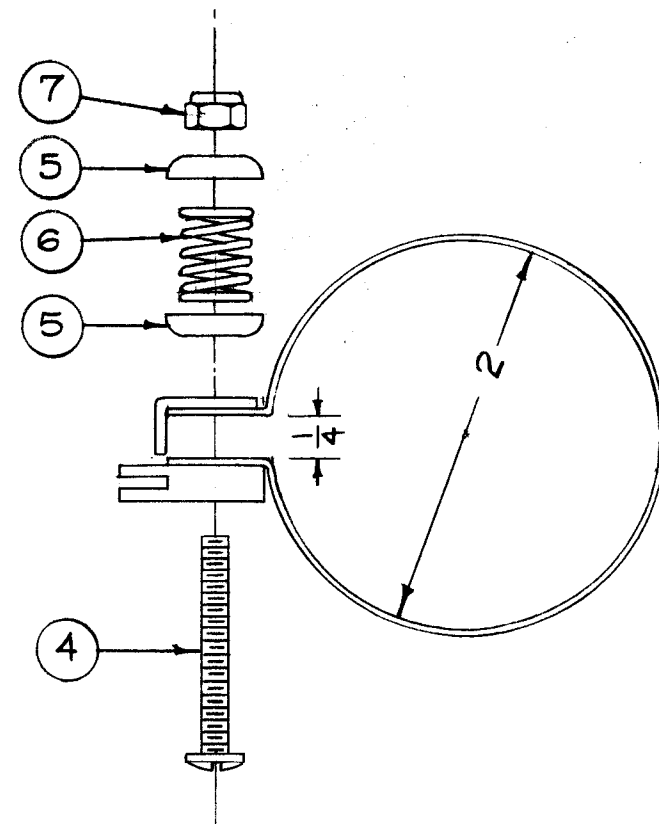
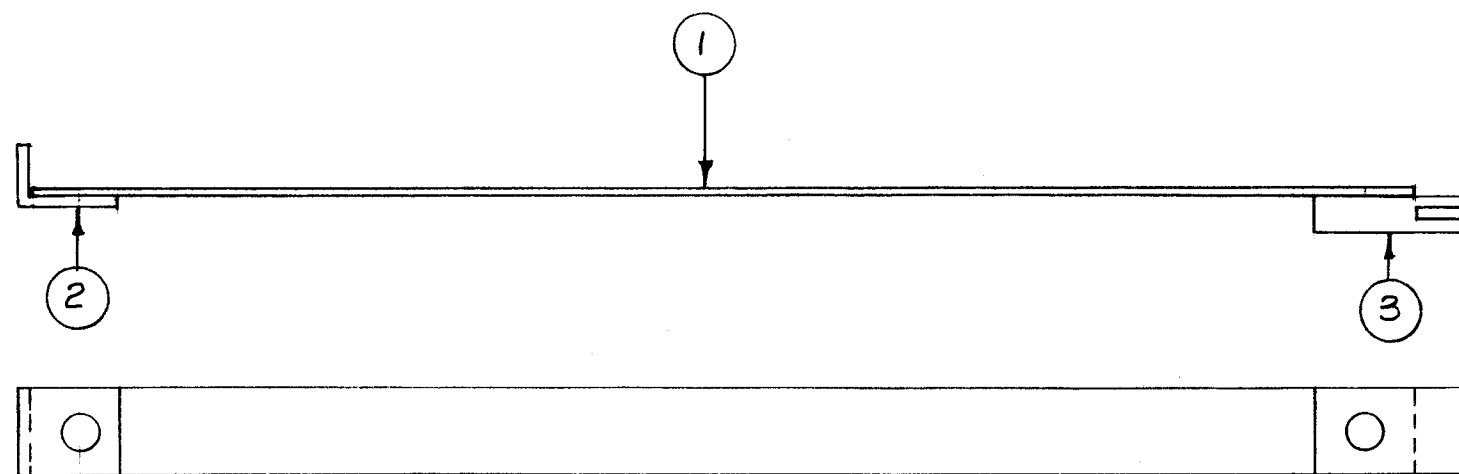


A-1477 B



Note:

1. Solder items 1, 2, & 3 together as shown above. Keep holes matched.
2. Silver Plate items 1, 2, & 3. (5245 - .0001 thk.)
3. Bend as shown at right.
4. Assemble as shown.

NOTICE TO PERSONS RECEIVING THIS DRAWING

THE TECHNICAL MATERIEL CORPORATION claims proprietary right in the material disclosed hereon. This drawing is issued in confidence for engineering information only and may not be reproduced or used to manufacture anything shown hereon without permission from THE TECHNICAL MATERIEL CORPORATION to the user. This drawing is loaned for mutual assistance and is subject to recall at any time.

Property of:

THE TECHNICAL MATERIEL CORPORATION
MAMARONECK, NEW YORK

REQ. ITEM	PART NO.	DESCRIPTION	SYMBOL
X 8	BS-101	Solder, Silver	
1 7	SM-12755632	Nut, SELF LOCKING, HEX.	
1 6	SP-116	Spring	
2 5	WA-118-2	Washer, Cup	
1 4	SCPS0632BN18	Screw, Machine	
1 3	PM-375	End, Contact Strap	
1 2	PM-378	End, Contact Strap	
1 1	MS-202-3-7.12	Lead, ELECT.	
THE TECHNICAL MATERIEL CORP. MAMARONECK, NEW YORK			
CONTACT STRAP ASS'Y.			
MATERIAL			
STOCK SIZE			
TYPE & TEMPER			
HEAT TREAT. SPEC.			
FINISH & SPEC. NO.			
DRAWN		16 10/25/57	
CHECKED		[Signature]	
ELEC. DES. APP.		[Signature]	
MECH. DES. APP.		[Signature]	
FINAL APPROVAL		A-1477 B	

ISSUE	ITEM	CHANGED FROM	DATE	CH. NO.	DRAFTS	CHECKER	ENG. APP.
B	1	BUILDUP UPDATED & CLARIFIED	10/30/63	10305	2R	mt	[Signature]
A	1	ITEM 1 WAS MS-202-3-7.00	4/23/58	1	[Signature]		[Signature]

TOLERANCES		SCALE: FULL	
DEC. DIM. ±		MAXIMUM ALLOWABLE TOLERANCES HAVE BEEN DETERMINED AND ANY DEVIATIONS WILL BE CAUSE FOR REJECTION.	
FRAC. DIM. ± 1/64		REMOVE ALL BURRS AND SHARP EDGES	
ANGULAR DIM. ±			

4	TER-500-70	A-1476	10-25-57
REQ. PER UNIT	MODEL	PROJECT NO.	ASS'Y. NO.
USED ON			