

IF IT IS FOUND DESIRABLE TO CHANGE ANY TOLERANCE OR OTHER DETAIL SPECIFIED ON THIS DRAWING NOTIFY THE PURCHASER PROMPTLY.

MAXIMUM ALLOWABLE TOLERANCES HAVE BEEN DETERMINED AND DEVIATIONS WILL BE CAUSE FOR REJECTION. REMOVE ALL BURRS AND SHARP EDGES

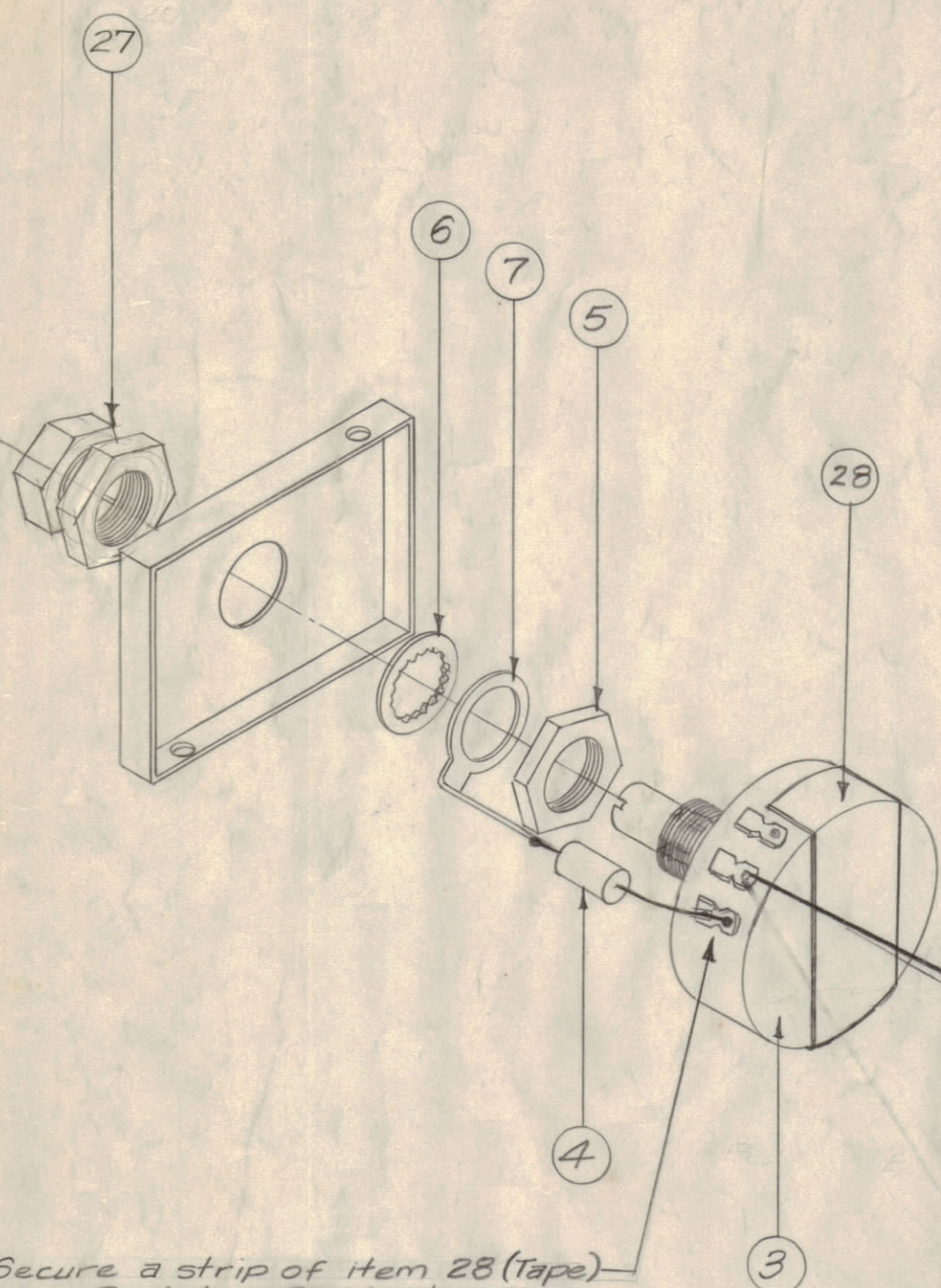
Stamp Unit as shown - 1/8 high black Gothic (AFTER PAINTING)

NOTICE TO PERSONS RECEIVING THIS DRAWING

THE TECHNICAL MATERIEL CORPORATION claims proprietary right in the material disclosed hereon. This drawing is issued in confidence for engineering information only and may not be reproduced or used to manufacture anything shown hereon without permission from THE TECHNICAL MATERIEL CORPORATION to the user. This drawing is loaned for mutual assistance and is subject to recall at any time.

Property of:

THE TECHNICAL MATERIEL CORPORATION
MAMARONECK, NEW YORK



Note: Bend Leads Close to Capacitor Surface.

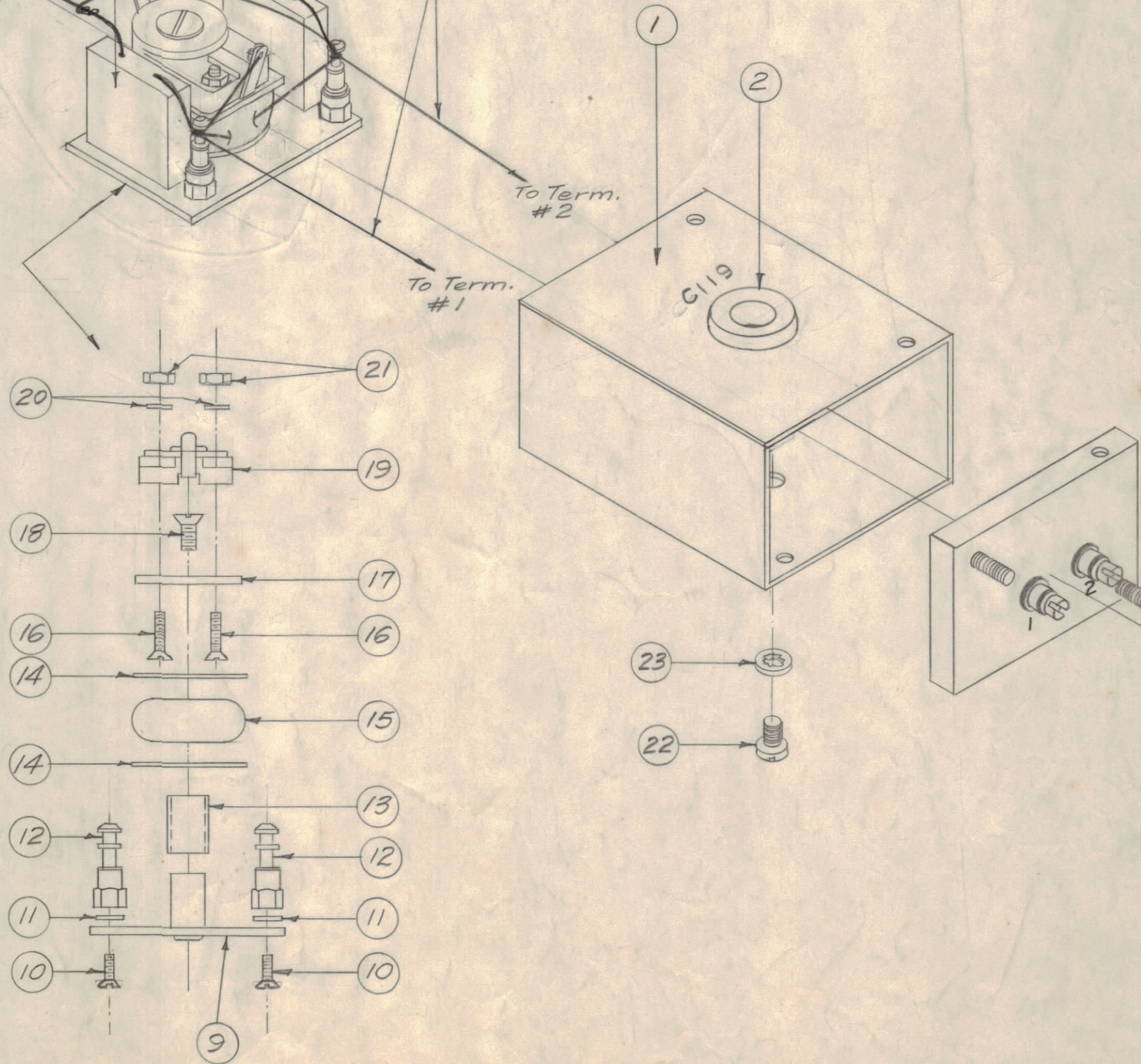
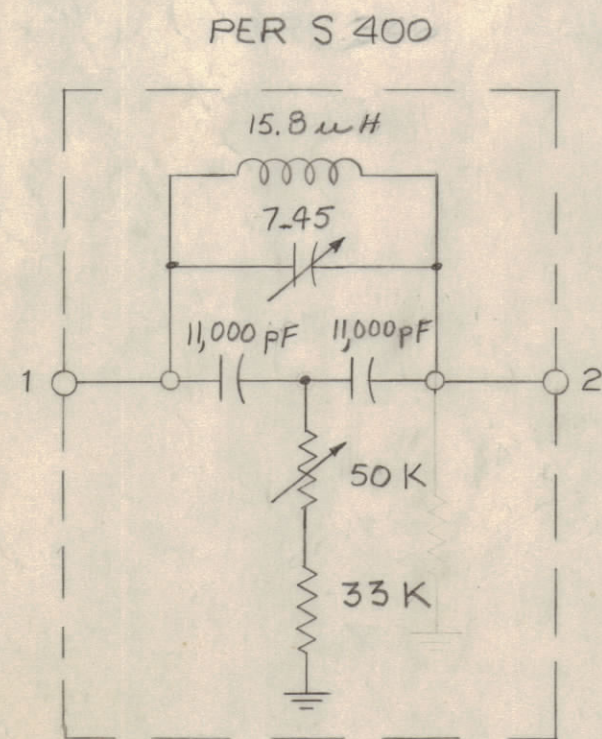
FINISH

1. Degrease
 2. 5114 Zinc Chromate Primer
 3. 5115 Smooth Grey Enamel
- (Paint all outside Surfaces of can except terminal end)

Note-

1. Use Sleeving (item 25) wherever there exists the danger of shorting.
2. Resonate Coil using S400 as guide

Secure a strip of item 28 (Tape) over Resistor Terminals after soldering connections.



X	29	WL-100-7	Wire, Buss
X	28	TA-100-4	Tape, Vinyl Plastic
1	27	PO-104	Lock, Shaft
X	26	B5-100	Solder, Soft.
X	25	PX-104-1-034	Insulation, Sleeving
4	24	SFB02565C3	Screw, Thd. Cutting
1	23	LW106MRC	Lockwasher, Int.
1	22	SCB50632BC3	Screw, Machine
2	21	NTH0440BC6	Nut, Hex.

A-1461 C

2	20	WA-109-17	Washer, Fiber
1	19	CVIIC450	Capacitor, Var., Ceramic
1	18	SCFS0632BC4	Screw, Machine
1	17	PX-384	Insulator, Capacitor
2	16	SCFS0440BC7	Screw, Machine
1	15	CL-129	Reactor, Toroidal, 155 uH
2	14	WA-109-55	Washer, Fiber
3/8"	13	PX-104-1-263	Insulation, Sleeving
2	12	TE-102-2	Terminal, Turret
2	11	LW504MRC	Lockwasher, Split
2	10	SCFS0440BC4	Screw, Machine
1	9	MS-1135	Chassis, Rejection Net.
2	8	CM108F1102F	Capacitor, Fixed
1	7	TE-111-2	Lug, Solder
1	6	LW137MRC	Lockwasher, Int.
1	5	NTH3732BC16	Nut, Hex.
1	4	RC20GF333K	Resistor, Fixed, Comp.
1	3	RV4NAYS503A	Resistor, Variable, Comp.
1	2	EY-102-5	Grommet, Elastic
1	1	BX-156	Case & Covers

C	IT.2 WAS EY102-5. #11-3 WAS RV4AT. ADDED NOTE #2. ITEM 23 ADDED	1-15-66	18718	HBY.		OP	
B	ITEM 8 POSITION & WIRING RE-ARRANGED	3/13/58	2	16	HBY.		
A	ITEM 3 WAS RV4ATSD504A	9/24/57	1	16	DB	MB	
ISSUE	ITEM	CHANGED FROM	DATE	CN. NO.	DRAFTS	CHECKER	ENG. APP.
		TOLERANCES		SCALE:			
ALL OTHERS		DEC. DIM. ± FRAC. DIM. ± ANGULAR DIM. ±	DRILL, PUNCH, COMMERCIAL STOCK SIZES AND MANUFACTURERS TOLERANCES ARE NOT INCLUDED.				

1	SBE-1	Z106	9-10-57	
REQ PER UNIT	MODEL	PROJECT NO.	ASS'Y. NO.	DATE
USED ON				

REQ. ITEM	PART NO.	DESCRIPTION	SYMBOL
THE TECHNICAL MATERIEL CORP. MAMARONECK, NEW YORK			
STOCK SIZE			
17KC REJECTION NETWORK			
(SBE-1) Z106			
MATERIAL	WEIGHT PER PC.		
		169-10-57	DB
TYPE & TEMPER		DRAWN	ELEC. DES. APP. MECH. DES. APP.
		checked	FINAL APPROVAL
HEAT TREAT. SPEC.			
FINISH & SPEC. NO.		A-1461 C	